

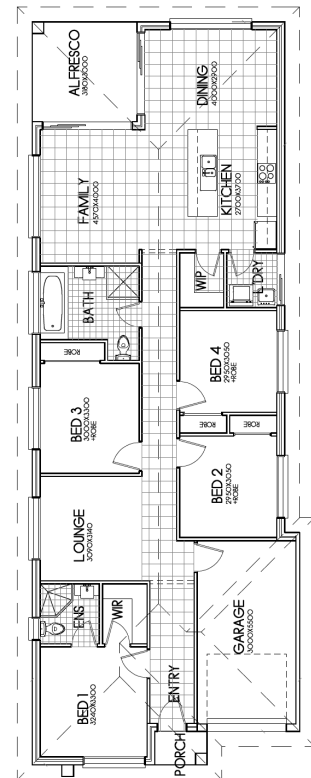
HOUSE AND LAND PRICE \$749,500.00

\*LAND \$461,000.00 HOUSE \$288,500.00



## Includes Designer Living Homes Asset Inclusions package featuring

- 2600mm ceilings
- Selection of feature panel doors
- Downlights to living areas (amount subject to design)
- Mirrored robes with melamine shelving
- Selection of floor tiles to nominated areas
- Selection of Carpet to nominated areas
- Omega appliances
- Selection of Floor to ceiling tiles to Bathroom, ensuite and W.C (if applicable)
- 20mm Stone Benchtops to Kitchen, bathroom and ensuite
- Selection of Tiles to Porch and Alfresco areas
- Flyscreens to all windows
- And much more

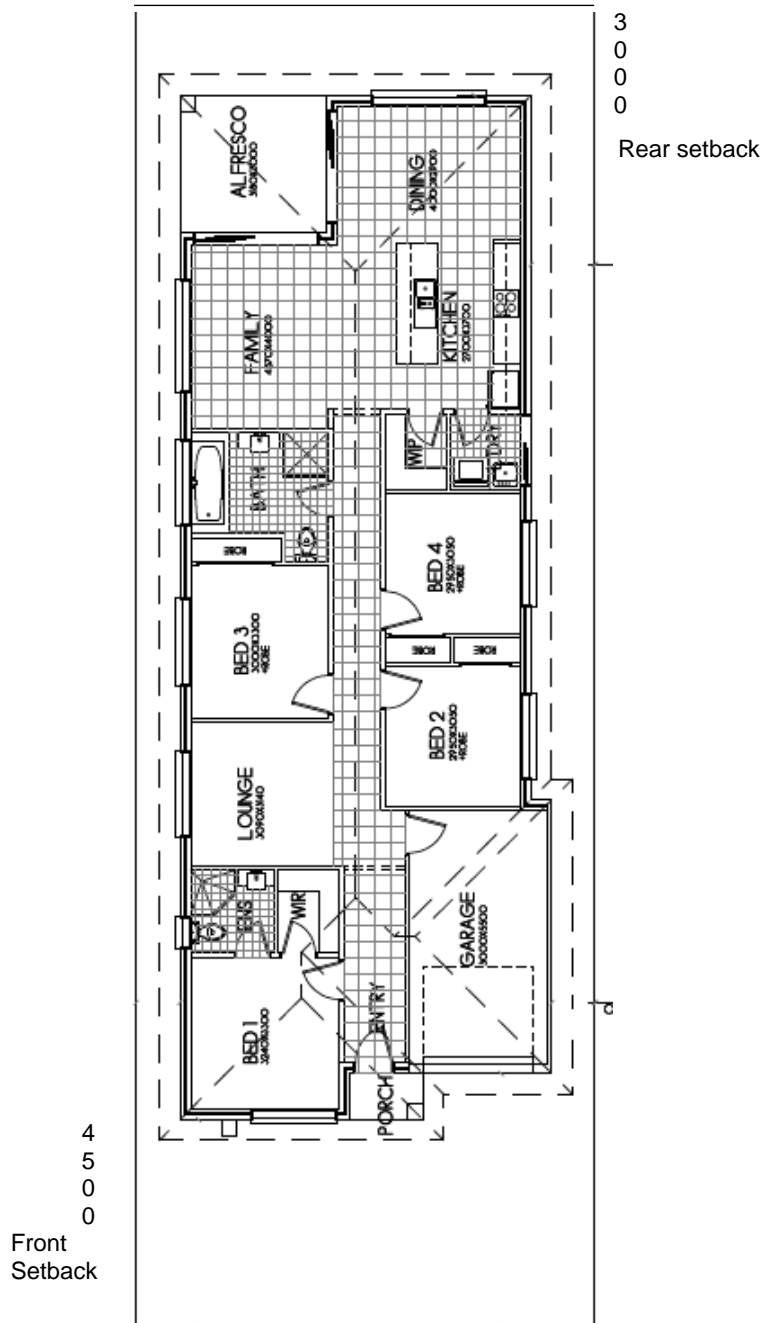


**TERMS & CONDITIONS:** Package prices are based on standard home, standard facade and builder's preferred siting. Depicted facade may incur an additional charge. Pricing may vary due to actual land availability. House and Land Packages are subject to developers design review panel, council final approval and Designer Living Homes Procedure of Purchase. All prices are GST inclusive. Designer Living Homes reserves the right to change prices without notice. Start date is subject to client, developer and council meeting time frames including but not limited to, land registration, amount of client variations, developer/council approval, acceptance of tender and contract within 7 days respectively. Prices are subject to developer, council and statutory requirements, location and condition of services. Package provided is based on Designer Living Homes preliminary/preferred siting and preliminary developer land information currently available. Variations to land size, location of services - including but not limited to sewer/stormwater locations, drainage grates, Telstra pits, trees, butterfly drains, driveway crossover, pram ramps, electrical/other easements or Section 88B instrument, may necessitate floor plan or siting amendments. Designer Living Homes Sale terms and conditions apply a full details of these are available from all Designer Living Homes Display Centres. Please speak to your Designer Living Homes consultant or refer to individual marketing material. Builders Licence Number 304148C. Effective October 2018.

**HOUSE AND LAND PRICE \$749,500.00**

\*LAND \$461,000.00 HOUSE \$288,500.00

 4  2  1  309.6m<sup>2</sup>



TERMS & CONDITIONS: Package prices are based on standard home, standard facade and builder's preferred siting. Depicted facade may incur an additional charge. Pricing may vary due to actual land availability. House and Land Packages are subject to developers design review panel, council final approval and Designer Living Homes Procedure of Purchase. All prices are GST inclusive. Designer Living Homes reserves the right to change prices without notice. Start date is subject to client, developer and council meeting time frames including but not limited to, land registration, amount of client variations, developer/council approval, acceptance of tender and contract within 7 days respectively. Prices are subject to developer, council and statutory requirements, location and condition of services. Package provided is based on Designer Living Homes preliminary/preferred siting and preliminary developer land information currently available. Variations to land size, location of services - including but not limited to sewer/stormwater locations, drainage grates, Telstra pits, trees, butterfly drains, driveway crossover, pram ramps, electrical/other easements or Section 88B instrument, may necessitate floor plan or siting amendments. Designer Living Homes Sale terms and conditions apply a full details of these are available from all Designer Living Homes Display Centres. Please speak to your Designer Living Homes consultant or refer to individual marketing material. Builders Licence Number 304148C. Effective October 2018