

Lot 2039
NEW BREEZE
 AT BARDIA

**BARDIA at
 EDMONDSON PARK**

HOUSE AND
 LAND PACKAGE



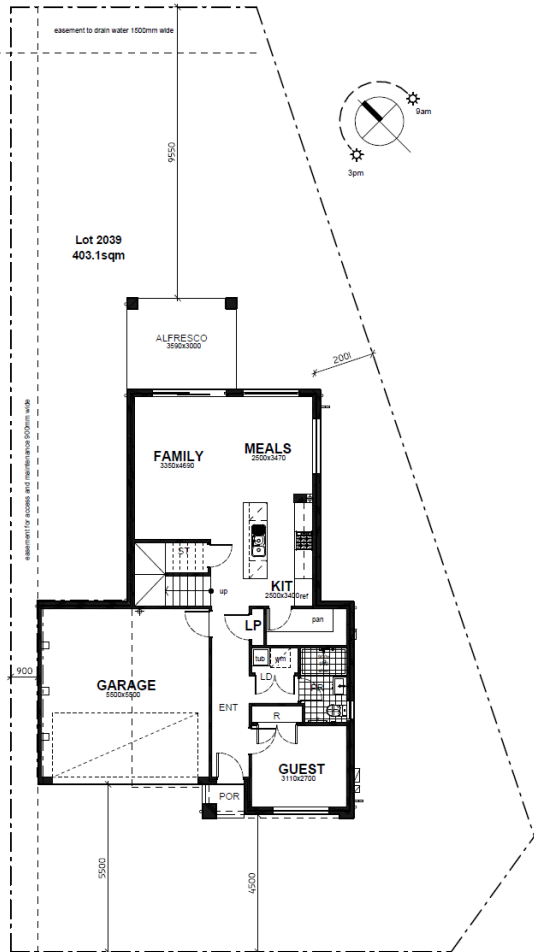
Illustrative purposes only



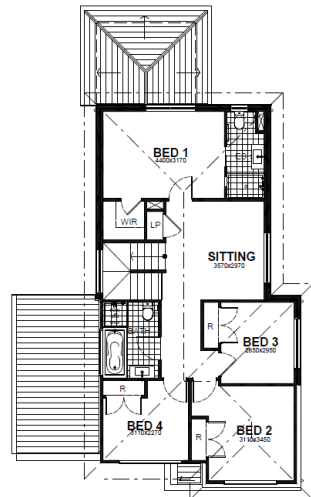
\$888,100

Modern | Stylish | Affordable

- Modern Standard Inclusions
- 20mm stone benchtops in kitchen
- Dishwasher
- Soft close doors and drawers in kitchen
- Tiles to living areas and porch
- Carpets to bedrooms
- Wall hung vanities with 20mm stone in bathroom and ensuite
- 15 downlights
- Vertical Blinds
- 2590mm ceilings to ground floor
- Remote control panel lift door
- Ducted Air Conditioning
- Alarm system
- Flyscreens
- 'Coloured On' concrete driveway
- Letterbox and clothesline
- Soft landscaping
- Land size 403.1 m²
- House size 215.2m² | 23.16 sq
- Land \$489,900 | House \$398,200



GROUND FLOOR PLAN



FIRST FLOOR PLAN

The content of this brochure was produced prior to planning approval, statutory approval and commencement of construction. Photographs and artist's impressions depicting the New Breeze estate and surrounding area and the interiors and exteriors are intended as a guide only and subject to change. Styling is indicative only and not provided. Information and images relating to the public park areas within and the surrounding park areas are indicative only. All outlines depicting areas are indicative only. Prospective purchasers should make their own enquiries. Correct as 17th May 2018.