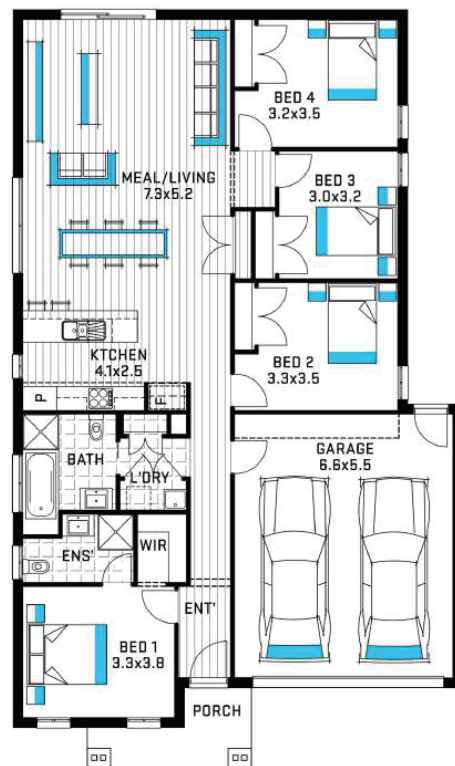




FALCON

2012



11.30 m **18.00 m** **20.30** **188.30 m²**
 Exterior Width Exterior Length Squares Total House Area

12.50 m Block Width **25.00 m** Block Depth

RIDGE HOMES

INCLUSIONS

single storey

RIDGE HOMES

INCLUSIONS - SINGLE STOREY

KITCHEN

- *Stainless steel gas cooktop 600mm*
- *Stainless steel electric under bench oven 600mm*
- *Stainless steel canopy range hood 600mm*
- *Stainless Steel Dishwasher including all connections*
- *1-3/4 Stainless Steel Sink*
- *Sink mixer (Stainless Steel)*
- *Laminate benchtops*
- *Laminate base cabinets and overhead cabinets. (as per working drawings)*

BATHROOM & ENSUITE

- *Semi Inset Basin with pop up waste*
- *Showers – Semi framed clear glass pivot door on a tiled shower base*
- *Acrylic inset bath*
- *Close Coupled soft close toilet suite*
- *Polished edge mirrors above vanity benchtops*
- *Mixer tapware, shower head & bath wall outlet (Round)*
- *Laminate bench tops & cabinets (as per working drawings)*
- *600mm Single Towel Rails to Ensuite & Bathroom*
- *Toilet Roll Holders to WC and Ensuite (Round)*
- *Exhaust fans to Ensuite & Bathroom*

FLOOR COVERINGS

- *Builders range category 1 carpet complete with 7mm foam underlay to all Bedrooms, robes & Lounge. Note. Lounge is plan specific.*
- *Laminate flooring to Entry, Entry Hallway, Kitchen, Meals, Family & passage including linen cupboard*
- *Floor tiles to Ensuite, Bathroom, WC & Laundry*
- *Wall tiles to Kitchen, Ensuite, Bathroom & Laundry*
- *Skirting tiles to Ensuite, Bathroom, WC & Laundry*

EXTERNAL

- *Builders range Category 1 bricks to dwelling and garage*
- *Façade as per working drawings (Notion, Nightington, Regency)*



RIDGE HOMES

INCLUSIONS - SINGLE STOREY

LAUNDRY

- *Stainless steel trough and metal cabinet 45lt*
- *Mixer tapware & Washing machine stops*

ELECTRICAL

(As per working drawings)

- *TV points, phone point & smoke detectors*
- *Power points*
- *Internal & external Batten light point(s) including front porch*
- *TV antenna*

HEATING & COOLING

- *Gas ducted heating (unit in roof space)*
- *Split system cooler located in family room*

WINDOWS AND EXTERNAL DOORS

- *Front door – with Deadlock + lever handle to front door (as per working drawings)*
- *Aluminium windows including window locks*
- *Provide nylon mesh flyscreens to all openable aluminium windows and sliding doors. Note. Flydoor not included to front entry door or Laundry door (if applicable)*
- *Entrance set to all other external doors & garage internal access door*
- *Block-out roller blinds to all windows and external sliding doors*
- *Brick infills to all windows and doors (design specific)*

GARAGE

- *Sectional lift up door to front including remote control unit*

CEILINGS

- *2440mm (Overall Plate) standard ceiling height*



RIDGE HOMES

INCLUSIONS - SINGLE STOREY

HOT WATER SERVICE

- Solar hot water unit with 200L tank with 20L instantaneous gas booster (for non recycled water estates)

ROOFING

- Metal Roof – Selection from builder's range
- Metal fascia and gutter

FIXING

- 67mm MDF square dressed skirting and 42mm square dressed architraves
- Hinged flush panel doors
- Gainsborough lever passage sets and dummy handles
- Hinged flush panel doors to linen & build in wardrobes

PLASTER

- Cornice – 75mm cove

PAINT – 2 COAT SYSTEM

- Low sheen acrylic to external timber work
- Low sheen acrylic to internal walls
- Flat acrylic to ceiling
- Gloss finish to internal wood work
- Gloss finish to front entry and internal door





RIDGE HOMES

INCLUSIONS - SINGLE STOREY

DRIVEWAY

- Colour through concrete driveway & front porch up to 35m² (as per working drawings)

LANDSCAPING & FENCING

- Front & rear landscaping as per developers guidelines (if required) including wall mounted clothesline & mailbox
- Fencing as per developers guidelines (if required) including winged fencing & P/A gate

FOUNDATIONS

- Class M concrete slab

CONNECTION

- Connection of services (water, gas, electricity, sewer, telephone conduit & stormwater) based on 500m² blocks with less than 300mm fall, 5m setback & maximum of 12m run of services. Does not include Energy and telephone consumer account opening fees.

TERMITE

- Part A Slab penetration system & Part B Slab Spray

STRUCTURAL

- 7-year structural guarantee (conditions apply)

ENERGY

- Minimum 6-star energy rating

QA INSPECTION

- Independent quality assurance inspection, reinspection & certificate upon completion

Ridge Homes reserves the right to substitute the make, model or type of any of the above products to maintain the quality & product development of its homes

