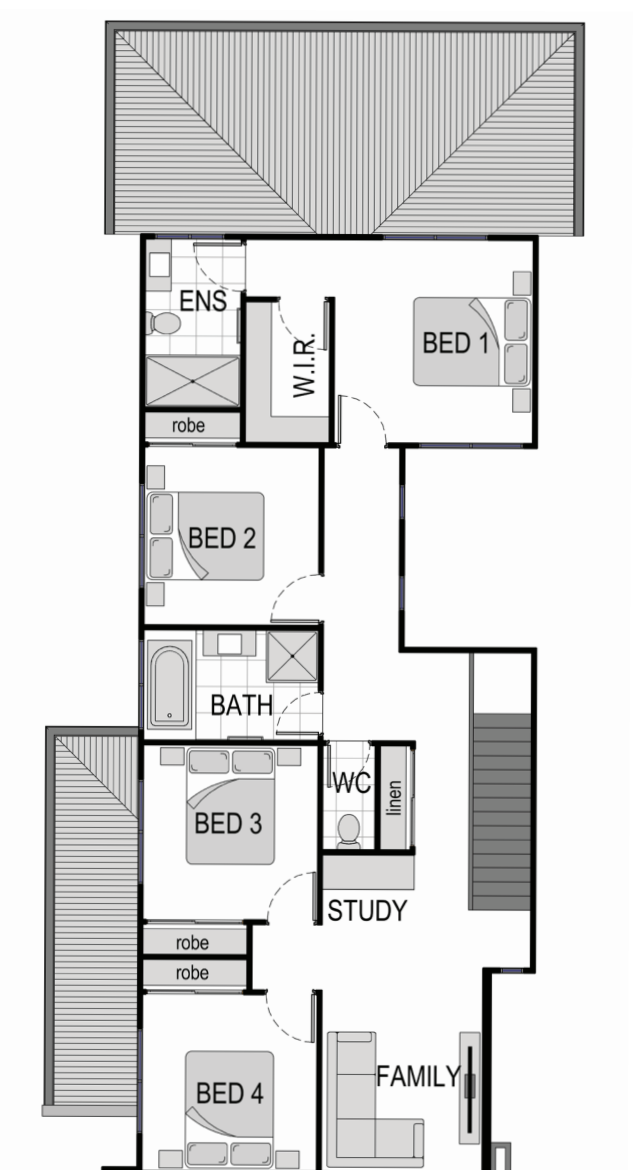
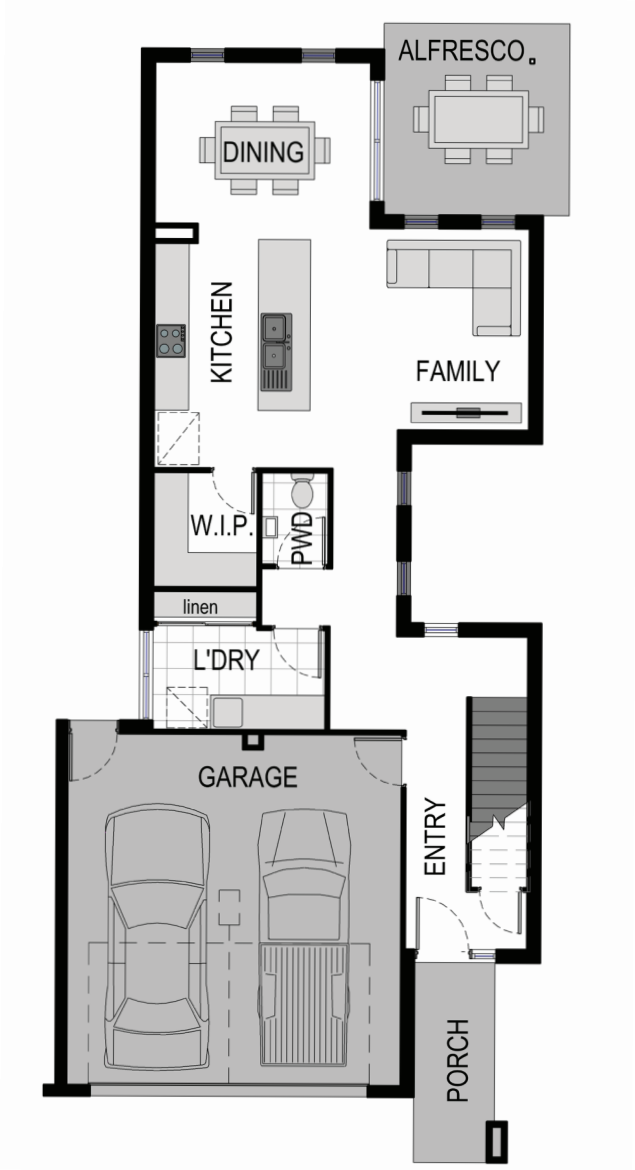




ELYSE

\$558,255



BLOOM
COOMERA
890

- INCLUDED UPGRADES
- FACADE
 - RENDER
 - CEILING HEIGHT
 - LANDSCAPE
 - BENCHTOP
 - APPLIANCES

LAND PRICE \$230,000
BUILD PRICE \$328,255

- 4 BEDROOMS
2 LIVING
2.5 BATHROOMS
2 CARS

LIVING 76.94m²
FIRST FLOOR 94.96m²
GARAGE 38.33m²
PORCH 4.98m²
ALFRESCO 10.66m²
TOTAL 225.87m²
LAND 302m²
FRONTAGE 10m²

CONTRACT DOCUMENTATION AND SPECIFICATIONS TAKE PRECEDENCE OVER THESE IMAGES. FRONT FAÇADE AND FLOOR PLAN IMAGES ARE FOR ILLUSTRATIONAL PURPOSES ONLY.