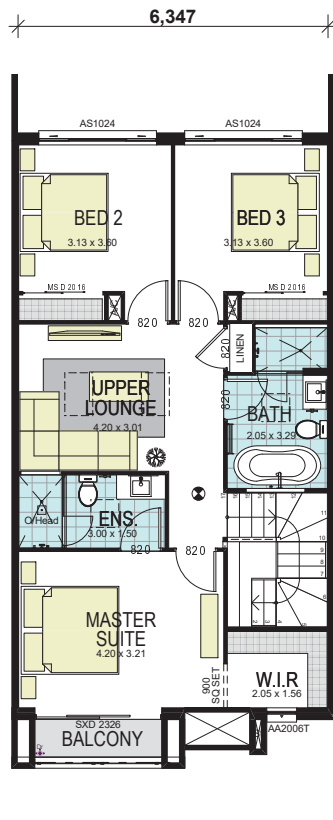
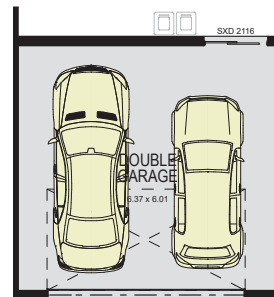


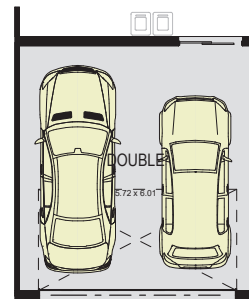
GROUND FLOOR



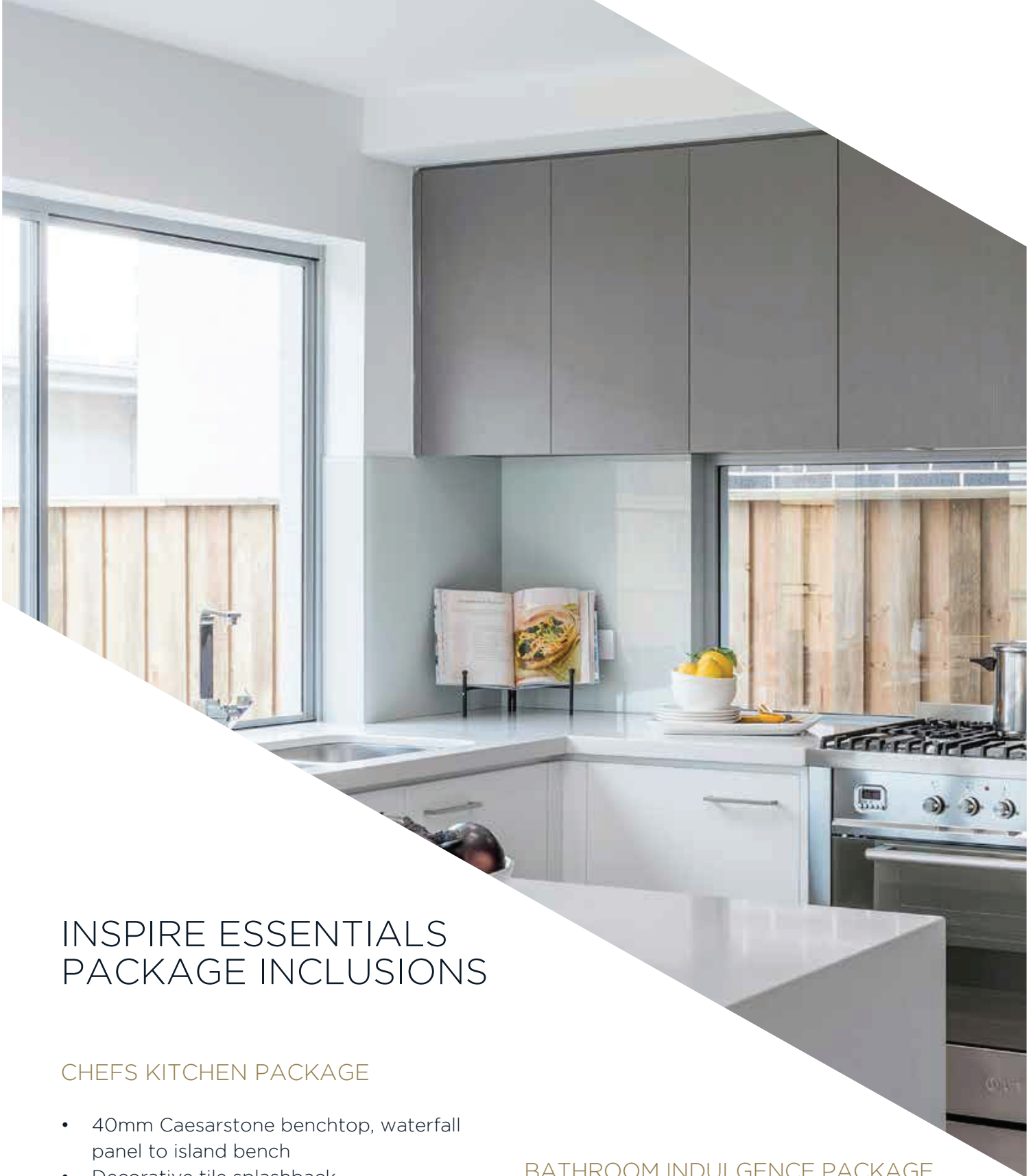
FIRST FLOOR



GARAGE 245



GARAGE



## INSPIRE ESSENTIALS PACKAGE INCLUSIONS

### CHEFS KITCHEN PACKAGE

- 40mm Caesarstone benchtop, waterfall panel to island bench
- Decorative tile splashback
- Bulkhead over cupboards
- Soft close drawers and cupboards
- Dropped ceiling over kitchen
- Stainless steel ILVE appliances
  - 900mm freestanding cooker
  - Undermount rangehood
  - Dishwasher
  - microwave

### BATHROOM INDULGENCE PACKAGE

- Full height tiling
- Tiled shower and bath niche
- Frameless shower screen to main bathroom and semi frameless to remaining showers
- Designer floating vanities with 40mm Caesarstone
- Posh Solus freestanding 1700mm bath tub



#### DOORS AND FITTINGS

- 2340 high stacker door
- 2340 High Front Door (clear glazed and clear timber finish) - designer bar handle
- Bar handles to kitchen Pantry, Linen and hung Robe doors
- 2340 high fixed windows to rear elevation of Ground Floor where applicable
  
- Taubmans 3 coat paint system
- Designer Stair upgrade to stainless steel balusters and squared mitred handrail. Black stain.
- Security alarm system with LCD code pad
- Ducted Air Conditioning
- Ceramic Tiles to Entry, Foyer, kitchen, Dining and Leisure Rooms
- Trend aluminium stacker door to outdoor Leisure area

For a full list of inclusions, speak to your sales consultant.