

# \$676,300

## House & Land Package

# Rayna 21



## Lot 6 Realm Estate

### AUSTRAL

Lot size 322.3m<sup>2</sup> (10m x 32.235m)

4 bed

2 bath

1 car

20.86  
SQ

### Core Inclusions:

- Urban facade
- Fixed Site Costs
- Coloured Concrete Driveway & Path
- Carpet to Bedrooms & Tiles to living areas
- 60cm Westinghouse Appliances
- Mirrored Sliding Robes
- Downlight Package to Kitchen/Living Area
- Overhead Cabinetry to Kitchen
- 3 Coat Paint System
- Sectional Garage Door including Remote
- Colorbond Roof including Anticon Blanket
- Engineered Steel Frames & Trusses

### Package inclusions Rayna 21 with Urban façade

The Rayna is designed to fit the narrow block market, with a combination of smart design and practical living spaces this home is everything the modern family needs. With an open plan kitchen, dining and living area flowing into the alfresco perfect for entertaining all year round. Head upstairs to find four bedrooms and a media space to relax and unwind.

**BUILD  
SMART**

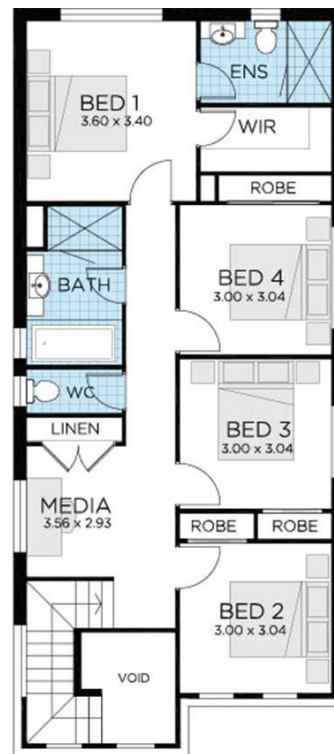
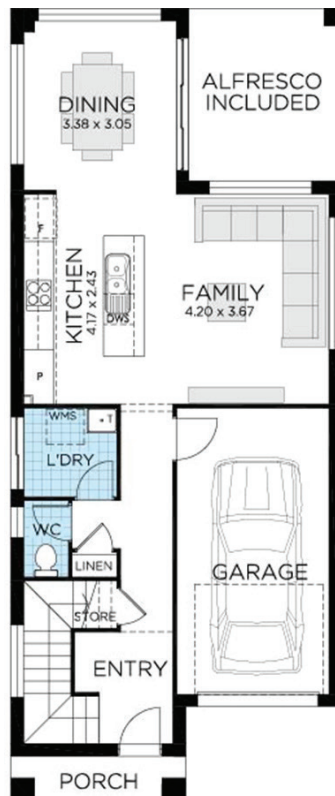
T. 1300 921 383  
E. [hello@thrivehomes.com.au](mailto:hello@thrivehomes.com.au)  
[thrivehomes.com.au](http://thrivehomes.com.au)

**Thrive** Homes

# Lot 6 Realm Estate

## AUSTRAL

Ground Floor	65.26m <sup>2</sup>
First Floor	95.35m <sup>2</sup>
Garage	19.56m <sup>2</sup>
Porch	3.13m <sup>2</sup>
Alfresco	10.52m <sup>2</sup>
Total	193.82m <sup>2</sup>
Overall Width	6.6m
Overall Length	15.82m



**T. 1300 921 383**

**[thrivehomes.com.au](http://thrivehomes.com.au)**

**Thrive** Homes

Disclaimer: Site costs are fixed for all lots with up to 1m of fall across the site and soil classification for 'M' class slabs and does not cover costs incurred if rock is found on any lots. Thrive Homes House and Land Packages are subject to availability, developers design review panel, bushfire requirements & statutory approval. Thrive Homes House & Land Packages will be determined upon tender requests for individual lots and may vary due to site conditions and statutory authority requirements. Whilst every effort is made to provide accurate information images are for illustrative purposes and intended to provide a visual guide only. Packages do not include stamp duty, legal fees or any other costs incurred associated to the purchase. Thrive Homes is responsible for the building contract for the construction of the home only. Customers will be required to enter into a separate contract for the purchase of the land component of the package with the relevant developer. Packages may change as a result of variations to the inclusions or specifications required by the purchaser. Refer to individual contracts for final details and terms and conditions. Thrive Homes reserves the right to withdraw any House and Land Package at any time or if the land or home become unavailable or is sold. Details are correct at time of printing and subject to change without notice or obligation. Printed 10/12/2019.

Printed 10/12/2019.

Builders Lic No. NSW.ABN 99 613 679 333