

Yarrabilba Masterplan



YARRABILBA

Created by

 **lendlease**

Yarrabilba Masterplan

Belong at Yarrabilba

Perfectly positioned between Brisbane's CBD and the Gold Coast, Yarrabilba really is in the middle of it all.

It's a community that truly is at home in nature; surrounded by Plunkett National Park and on the doorstep of Mt Tamborine. It's a place where big ideas are generated for a brighter future.

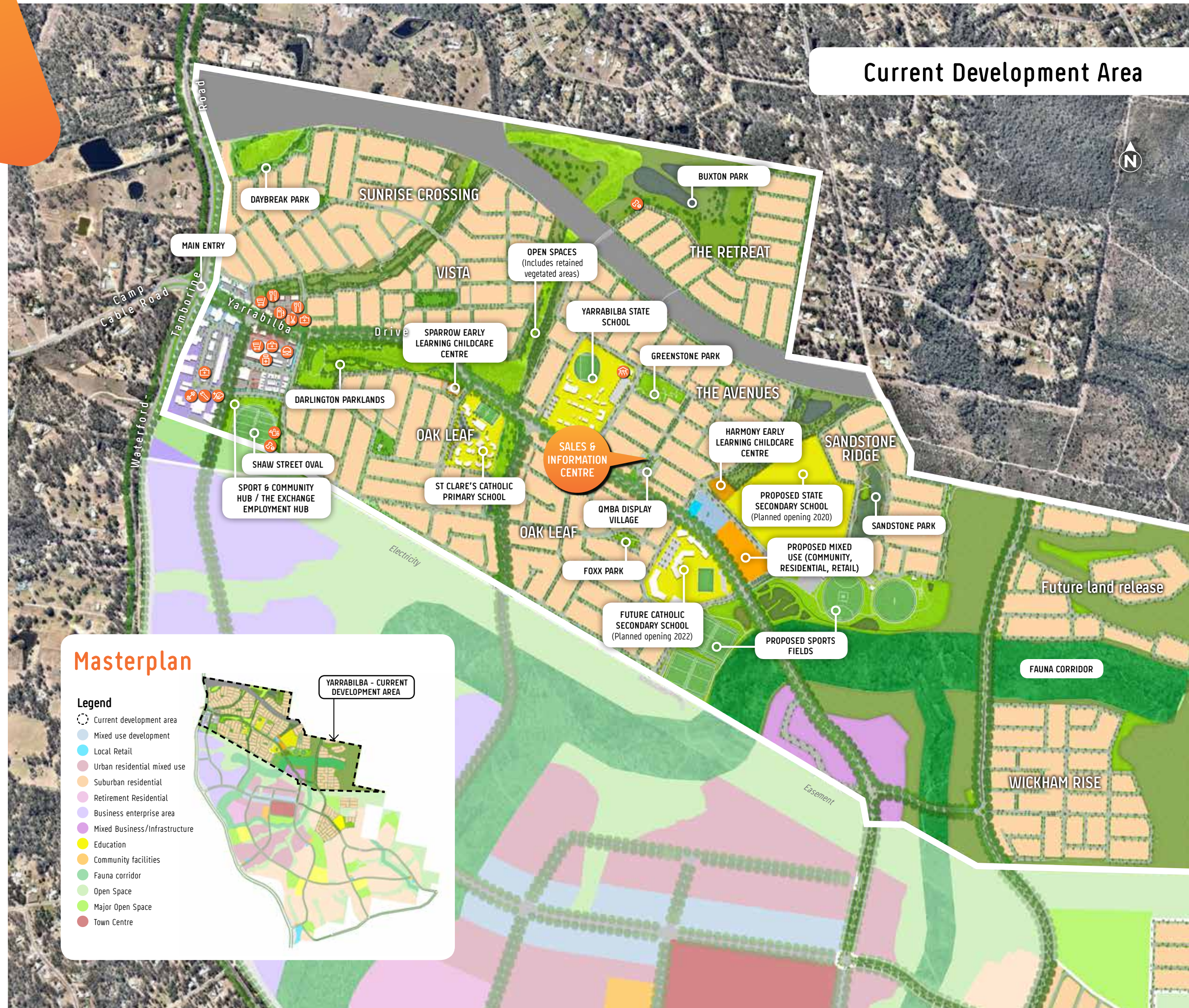
With over 25% of this modern community designated for open spaces, it inspires a healthy and positive lifestyle for all. With bike paths, playing fields, neighbourhood parks as well as specially created kids' play areas and outdoor gyms, Yarrabilba offers so much more.

Along with the best of the outdoors, you can enjoy exciting new modern shops, schools and community facilities right on your doorstep. It all comes together to create an unrivalled lifestyle you'll want to be part of.

Legend

- | | |
|--|--|
|  Shopping |  Tyre & Auto Services |
|  Child and Family Services Hub |  Veterinary Hospital |
|  Cafe/Restaurant |  Pharmacy |
|  Fast Food |  Gymnasium |
|  Medical Centre |  Hairdresser |
|  Petrol |  Dog Park |
| |  Community Garden |

The publishers have taken care to ensure that these plans have been prepared from all currently available information. However, landscape treatments, final road layout, public utility infrastructure locations and zoning are subject to change conditional on satisfactory authority approvals. The purchaser should therefore make their own enquiries before entering into any contract. Prepared June 2018.





Sales and Information Centre
Darrau Avenue, Yarrabilba, QLD

Opening Hours

Monday: 1.00pm to 5.00pm
Tuesday to Friday: 9.00am to 5.00pm
Weekends: 10.00am to 5.00pm

belong at Yarrabilba

yarrabilba.com.au 1800 721 856