

\$740,252

House & Land Package

Essence 22

10% DEPOSIT

NO MORE TO
PAY UNTIL
COMPLETION*



Lot 326 Aspect | Austral by Rawson Communities Estate

Lot size 354.6m² (11m x 32.245m)

4 bed

2 bath

1 car

22.14
SQ

Core Inclusions:

- Urban facade
- Fixed Site Costs
- Coloured Concrete Driveway & Path
- Carpet to Bedrooms & Tiles to living areas
- 60cm Westinghouse Appliances
- Mirrored Sliding Robes
- Downlight Package to Kitchen/Living Area
- Overhead Cabinetry to Kitchen
- 3 Coat Paint System
- Sectional Garage Door including Remote
- Colorbond Roof including Anticon Blanket
- Engineered Steel Frames & Trusses

Package inclusions Essence 22 with Urban façade

When it comes to living space, the Essence is in a class of its own. This design gives two separate living areas in a home compact enough to fit onto smaller blocks. The open planned living at the rear of the home creates a link between indoor and outdoor spaces that the entire family will enjoy.

**BUILD
SMART**

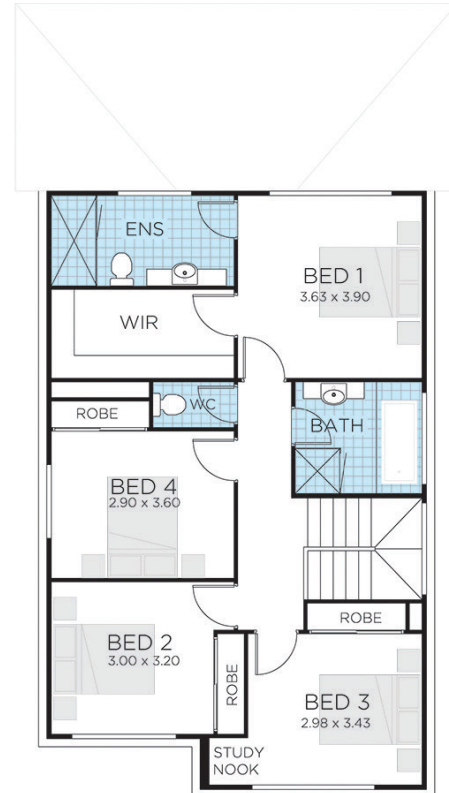
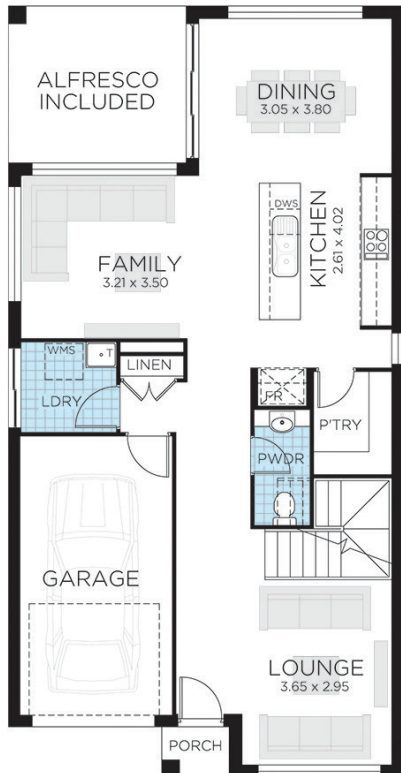
T. 1300 921 383
E. hello@thrivehomes.com.au
thrivehomes.com.au

Thrive Homes

Lot 326 Aspect | Austral by Rawson Communities Estate

AUSTRAL

Ground Floor	84.88m ²
First Floor	90.18m ²
Garage	18.5m ²
Porch	1.33m ²
Alfresco	10.81m ²
Total	205.7m²
Overall Width	7.8m
Overall Length	15.2m



T. 1300 921 383

thrivehomes.com.au

Thrive Homes

Disclaimer: Site costs are fixed for all lots with up to 1m of fall across the site and soil classification for 'M' class slabs and does not cover costs incurred if rock is found on any lots. Thrive Homes House and Land Packages are subject to availability, developers design review panel, bushfire requirements & statutory approval. Thrive Homes House & Land Packages will be determined upon tender requests for individual lots and may vary due to site conditions and statutory authority requirements. Whilst every effort is made to provide accurate information images are for illustrative purposes and intended to provide a visual guide only. Packages do not include stamp duty, legal fees or any other costs incurred associated to the purchase. Thrive Homes is responsible for the building contract for the construction of the home only. Customers will be required to enter into a separate contract for the purchase of the land component of the package with the relevant developer. Packages may change as a result of variations to the inclusions or specifications required by the purchaser. Refer to individual contracts for final details and terms and conditions. Thrive Homes reserves the right to withdraw any House and Land Package at any time or if the land or home become unavailable or is sold. Details are correct at time of printing and subject to change without notice or obligation. Printed 27/11/2019.