



# FULL TURN-KEY SMSF Compliant Dual Living @ \$496,703

**LOT 28 Sunrise Ct,  
Loganlea QLD**

## ***"Carlo 3&2" Dual Design***

Land Size: 350.00 SQM

Unit 1 size: 110.14 SQM

Unit 2 size: 91.01 SQM

Total size: 191.15 SQM

Land Price: \$225,000

Construction price: \$271,703

Total Package Price: \$496,703



Artist Impression



3+2



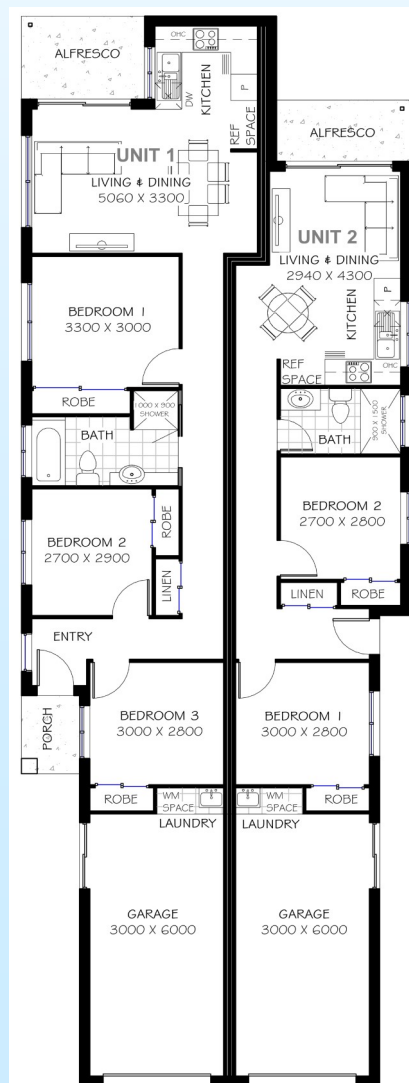
2+1bath



2

## ***Full Turn-Key Inclusions***

- \* Dual Living design
- \* Brick veneer construction
- \* 6 star energy efficiency
- \* Turf & 10 SQM landscape gardens
- \* Fully fenced
- \* Concreted driveways, paths & patios
- \* Split to both units with remote controls
- \* Lever door handles throughout
- \* Fully painted with Taubman's quality paints
- \* Stainless Steel Euromaid appliances
- \* Clothesline, TV antenna & letterbox
- \* Carpet & Tile throughout
- \* Vertical blinds to all windows
- \* Safety screens & window locks
- \* Security screen to external doors
- \* Fan light to bedrooms
- \* Garage remote controls
- \* 6yr Structural Guarantee
- \* 12mths Maintenance period



(C) All plans, drawings and artist impressions are copyrighted to Aushomes Pty Ltd, Underwood, Brisbane 2017

