



House design for illustration only, actual appearance may varies

\$ 665,710
(Upgrade)



4



3



1



1

LOT NUMBER:

Lot 6043

LAND SIZE:

208.2 m²

LAND PRICE:

\$322,710

HOUSE PRICE:

\$343,000

Ground Floor

71.4 m²

First Floor

63.7 m²

Garage

19.3 m²

Porch

1.1 m²

Alfresco

4.5 m²

Total

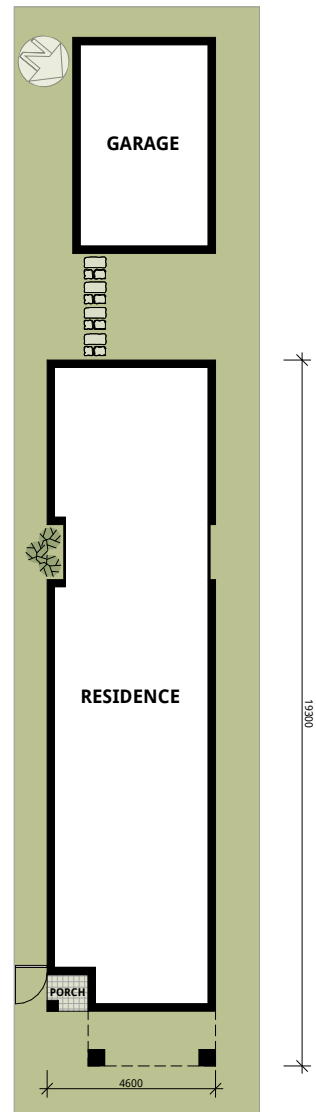
160 m²

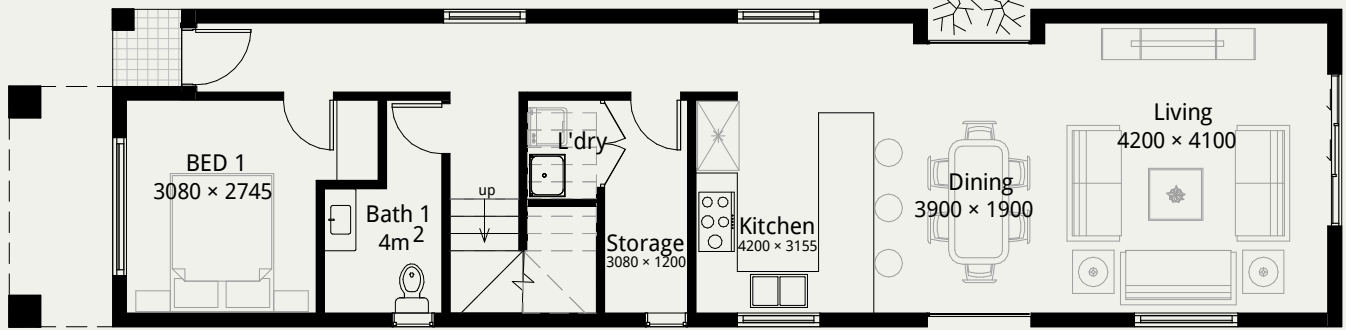
Land Settlement Time:

2020 Q1

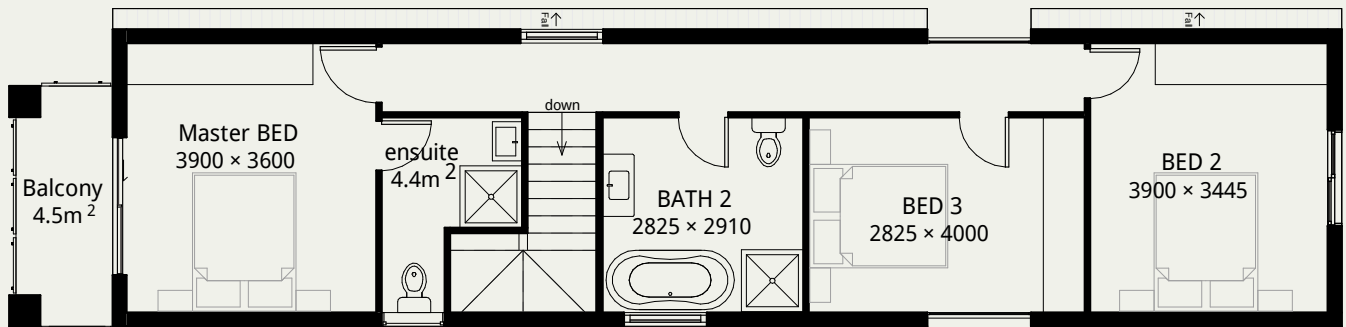
Suburb:

Bardia





Ground Floor Plan



First Floor Plan

Ground Floor	71.4 m ²
First Floor	63.7 m ²
Garage	19.3 m ²
Porch	1.1 m ²
Balcony	4.5 m ²
Total	160 m²

e-Property Group Copyright © 2019



Eco-house Upgrade Highlights:

Engineered and certified STEEL frames.

Colorbond Steel Fencing System.

Hebel External Wall System.

2700mm ceiling height for Ground Floor.

Aluminium DOUBLE-GLAZING windows.

40mm Stone Kitchen Bench Top.

Kleenmaid 900mm Kitchen Cooking Range .

Zoned Ducted Air - Condition.

Full Turnkey Package driveway landscaping included.



Whilst reasonable effort has been made to ensure accuracy, pictures, photographs and floor plans are illustrative and there may be some variation between this depiction and the detailed plans. Pictures and photographs may include items not included in E-Property Group specifications. See your sales agent for detailed home for landscape plans and inclusions. "House and land package price is correct at time of printing though is subject to change without notice. Stamp duty on land, legal fees, titles and property reports are not included in price. Total square meters and square size measurement of this house is calculated by measuring from the external side of external walls, where no external walls exist, for the purpose of measuring building area such as porticos, balconies or outdoor rooms) E-Property Group assumed a straight line between the exterior wall so columns, if this is a National Rental Afford ability Scheme approved property, see fahesia. gov.as for details. E- property Group Pty Ltd (ACN613499362)