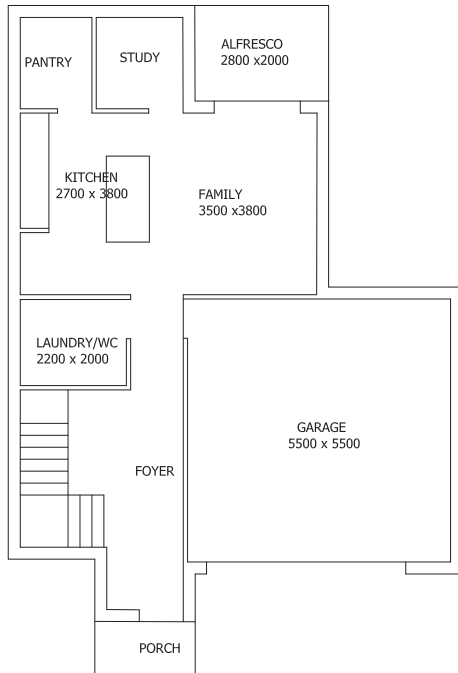


OPAL 
CONSTRUCTIONS

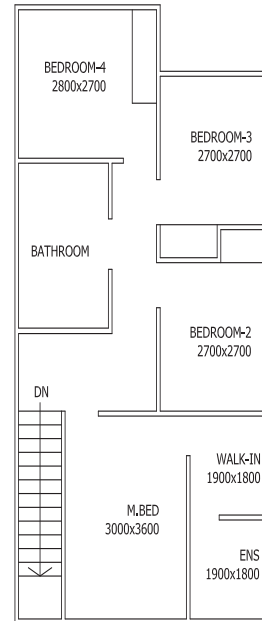
**MAKING YOUR DREAM HOME
INTO REALITY!**

PAIG
EST . 2010
BUILDING
SERVICES

**MAKING YOUR DREAM HOME
INTO REALITY!**



GROUND FLOOR



FIRST FLOOR



4



2



2

Inclusions List:

- > 2.7m Ceiling Height for Ground Floor and 2.5m for First Floor
- > Floor tiles to entry, passage, kitchen, wet areas & meal areas
- > Carpet floor coverings in all bedrooms
- > Flyscreens and keylocks to all openable windows
- > 900mm stainless steel gas cooktop
- > 900mm slide out rangehood
- > 900mm stainless steel oven
- > Hot Water System
- > LED Downlights throughout 24 nos
- > 20mm stone benchtop in kitchen
- > Complete Turnkey Package
- > Fixed Price Based On "M" Class Slab

STANDARD INCLUSIONS

Opal SS Constructions has a brand new range of inclusions. We prioritise inclusions which provide a comfortable and stylish aspect in your day to day life. Our new inclusions package is an essential and irresistible offer, making your dream homes a reality.

OUR ENHANCED STANDARD INCLUSIONS



Our enhanced standard specifications include:

- LED downlights across the home.
- Double powerpoints to each room.
- Handheld shower rail.
- Niches to bathroom and ensuite showers.
- Brick finish over doors and windows where applicable, infill over garage.
- Colour through concrete driveway.
- Automatic garage door.
- TV antenna.
- Flyscreens to all openable windows.
- Quality tiles and carpet.
- 900mm stainless steel oven, cooktop and rangehood.
- 20mm stone benchtop to kitchen with soft close drawers and doors.
- Mailbox
- Clothesline

• •
MAKING YOUR DREAM HOME
INTO REALITY!
• •