

CONTEMPORARY



ARTIST'S IMPRESSION

4  2  2 

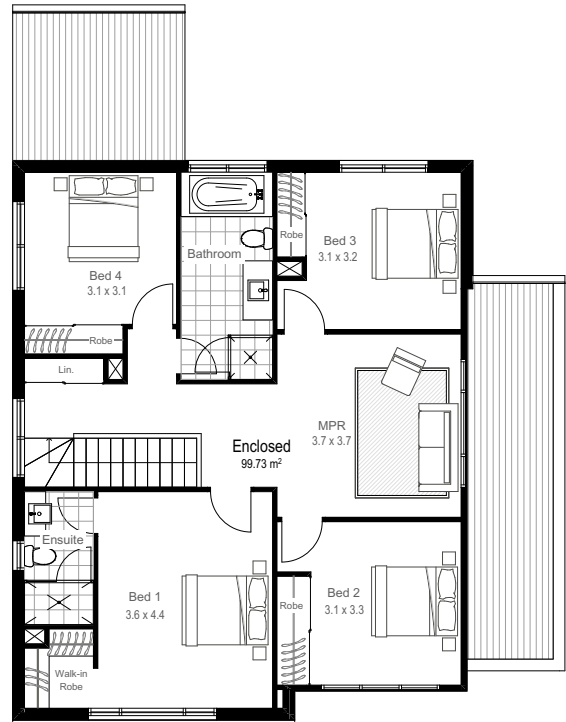
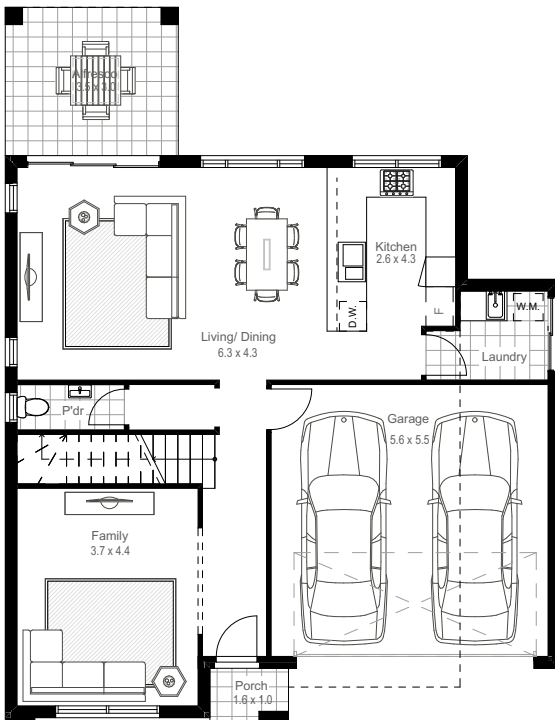
## TURNKEY HOUSE & LAND PACKAGES - INCLUSIONS

All homes include quality fixtures & fittings such as:

- 20mm reconstituted stone kitchen benchtop with waterfall ends
- Stylish interiors offering three preselected colour schemes
- Laminated timber flooring or ceramic tiles to living area
- First grade quality carpet to remaining areas
- Quality ceramic tiles to rear Terrace / Alfresco
- Landscaping, fencing, driveways and flyscreens also included

## GROUND FLOOR

## FIRST FLOOR



|                     |                            |
|---------------------|----------------------------|
| GROUND FLOOR LIVING | 82.29m <sup>2</sup>        |
| FIRST FLOOR LIVING  | 99.73m <sup>2</sup>        |
| GARAGE              | 33.46m <sup>2</sup>        |
| ALFRESCO            | 10.50m <sup>2</sup>        |
| PORCH               | 2.04m <sup>2</sup>         |
| <b>TOTAL</b>        | <b>228.02m<sup>2</sup></b> |

**Disclaimer:** Please note that this material was produced prior to construction and is intended as an indication of the items to be included and/or the general layout of the property and is merely indicative and should not be construed as constituting an offer, guarantee or contract. The Vendor reserves the right to make changes, alter, amend or change at any time the dimensions, areas, fittings, finishes, specifications items detailed here in without reference to or approval by the purchaser. This material should be read in conjunction with any Contract for Sale. All furniture illustrated is indicative only and is not included in the sale.