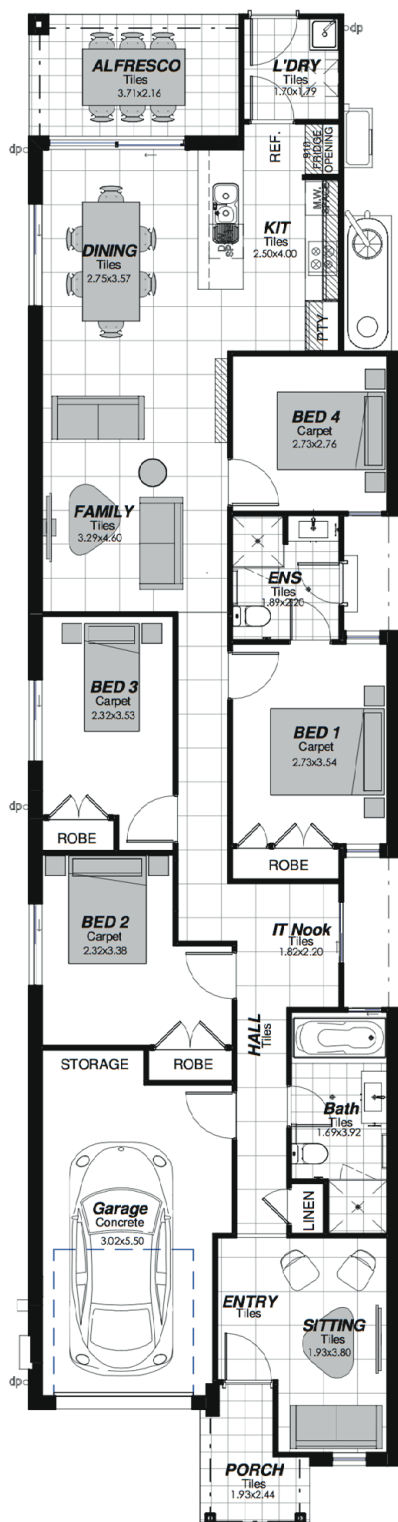


**Bentley Mod 2**4  2  1 **Lot 23, Summerview Estate**Block Size: 285.75m² | House Size: 163.07m²**Package Includes: Opal Inclusions**

- Soft landscaping - turf and basic garden beds.
- Coloured on concrete driveway and path. (Where applicable)
- Fold down clothesline.
- Face brick pier with built in letterbox.
- Fencing. (Estate design guidelines apply)
- Sarking to underside of roof tiles.
- TV antennae.
- Flyscreens to operable windows and sliding doors.
- Tiling and carpet throughout. (as per plan - Selection from standard range)
- Caesarstone bench tops to kitchen - 20mm pencil edge.
- Vertical blinds to all windows and sliding doors. (Excl. wet areas)
- Oyster light fittings to ground floor living areas.
- Fluorescent light fitting to garage.
- 3 coat paint system in Taubmans Endure.

Images are shown for illustrative purposes and may not always represent the final product. ZAC Homes has the right to alter prices and inclusions without prior notice. Based on 500mm cut and fill, no allowance for BAL or DEB. All designs are copyright to ZAC Homes Pty Ltd. Builders License No. 47259C. Date issued: 03.06.19



Images are shown for illustrative purposes and may not always represent the final product. ZAC Homes has the right to alter prices and inclusions without prior notice. Based on 500mm cut and fill, no allowance for BAL or DEB. All designs are copyright to ZAC Homes Pty Ltd. Builders License No. 47259C. Date issued: 03.06.19