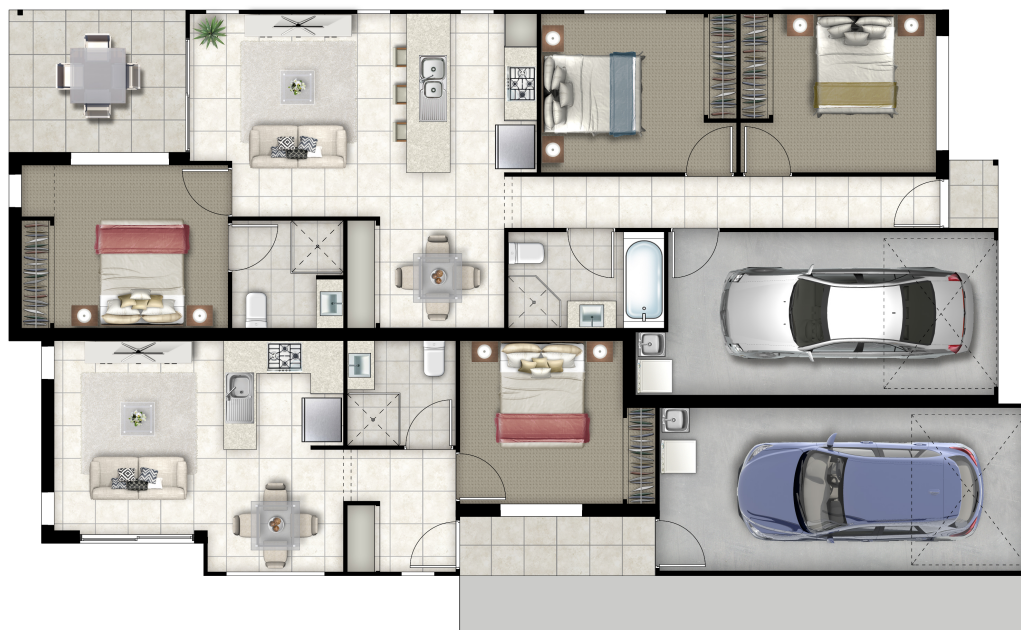


STRADBROKE 197 H2

4  3  2 



— 18.79m —



MAIN DWELLING

| | |
|------------------|----------------------------|
| LIVING | 84.28m ² |
| GARAGE | 20.03m ² |
| ALFRESCO | 13.01m ² |
| PORCH | 2.95m ² |
| SUB TOTAL | 121.27m² |

AUXILIARY UNIT

| | |
|----------|---------------------|
| LIVING | 44.43m ² |
| GARAGE | 22.11m ² |
| ALFRESCO | 4.87m ² |
| PORCH | 3.85m ² |

SUB TOTAL 75.26m²

TOTAL 196.53m²

FEATURES

- 4 BEDROOMS
- 3 BATHROOMS
- DUAL KEY LIVING
- PREMIER FINISH
- ENSUITED MASTER BEDROOM

Illustration for marketing purposes only. All materials, colours, details & landscaping items may be amended or varied & reference may be made to actual plans. Floor plan is generic and applies to all facades which may vary slightly, reference must be made to actual plans. Mirror reverse version may apply at the architects discretion.