

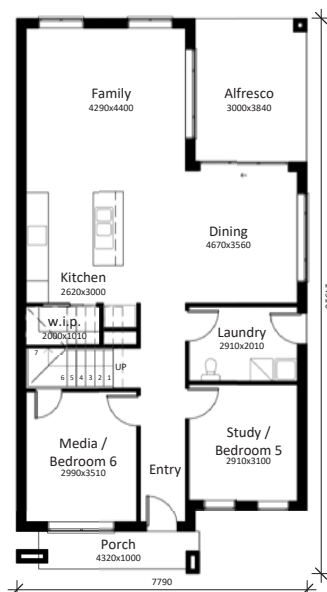
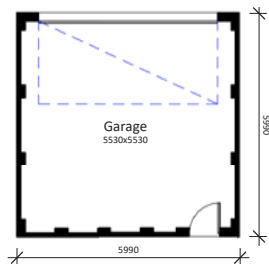
# NEW BREEZE

AT BARDIA

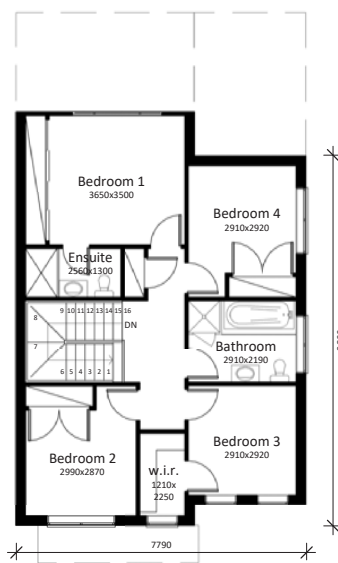
## Lot 712

# BARDIA at EDMONDSON PARK

# HOUSE AND LAND PACKAGE



Ground Floor Plan



First Floor Plan

# \$843,900

## Modern | Stylish | Affordable

- Modern Standard Inclusions
- 20mm stone benchtops in kitchen
- Dishwasher
- Soft close doors and drawers in kitchen
- Tiles to living areas and porch
- Carpets to bedrooms
- Wall hung vanities with 20mm stone in bathroom and ensuite
- 15 downlights
- 40cm LED Oyster lights to bedrooms
- Vertical Blinds
- 2590mm ceilings to ground floor
- Remote control panel lift door
- Ducted Actron Air Conditioning
- Alarm system
- Flyscreens
- Upgraded T2 treated pine termite resistant timber frame and roof truss system
- Letterbox and clothesline
- Soft landscaping
- Land size 298.8 m<sup>2</sup>
- House size 225.74 m<sup>2</sup> | 24.21 sq
- Land \$455,900 | House \$388,000

The content of this brochure was produced prior to planning approval, statutory approval and commencement of construction. Photographs and artist's impressions depicting the New Breeze estate and surrounding area and the interiors and exteriors are intended as a guide only and subject to change. Styling is indicative only and not provided. Information and images relating to the public park areas within and the surrounding park areas are indicative only. All outlines depicting areas are indicative only. Prospective purchasers should make their own enquiries. Correct as 18th October 2018.