

THE GROVE



LOT 3731 BARTEK STREET, TARNEIT, VIC

SHAPE
homes

STAGE 37



PLANS TO TAKE PRECEDENCE OVER IMAGE. IMAGE IS AN ARTIST IMPRESSION AND COLOUR MAY VARY
FACADE MAY VARY SUBJECT TO DEVELOPER APPROVAL

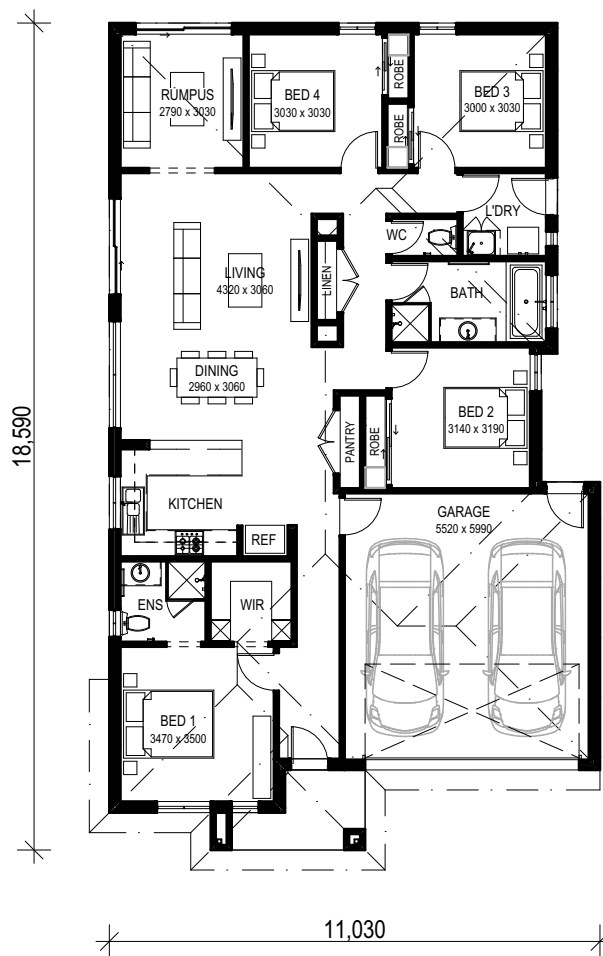
RUSSEL FACADE

FIXED PRICE HOUSE & LAND

- FULL TURNKEY PACKAGES, JUST MOVE IN
- FIXED PRICE, NOTHING MORE TO PAY
- STAINLESS STEEL EUROPEAN APPLIANCES
- ALL FENCING, LANDSCAPING, DRIVEWAYS, EVEN A LETTERBOX WITH NUMBERS
- INDEPENDENT QUALITY CONTROL

BLACKBURN

AREA: 182.68m²



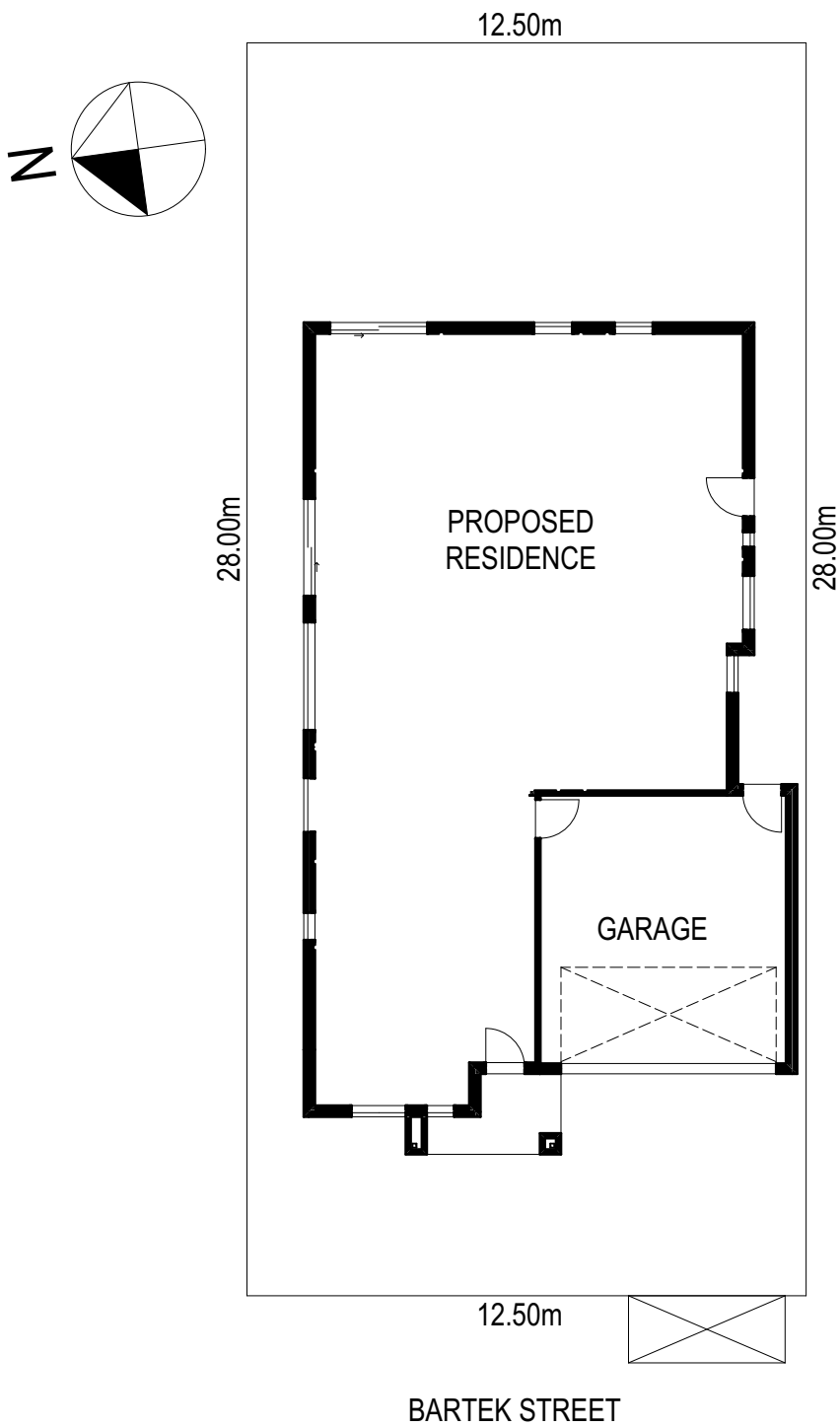
4



2



2



PROPOSED AREA	
GARAGE	37.11
PORCH	4.64
HOUSE	140.93
	182.68 m²