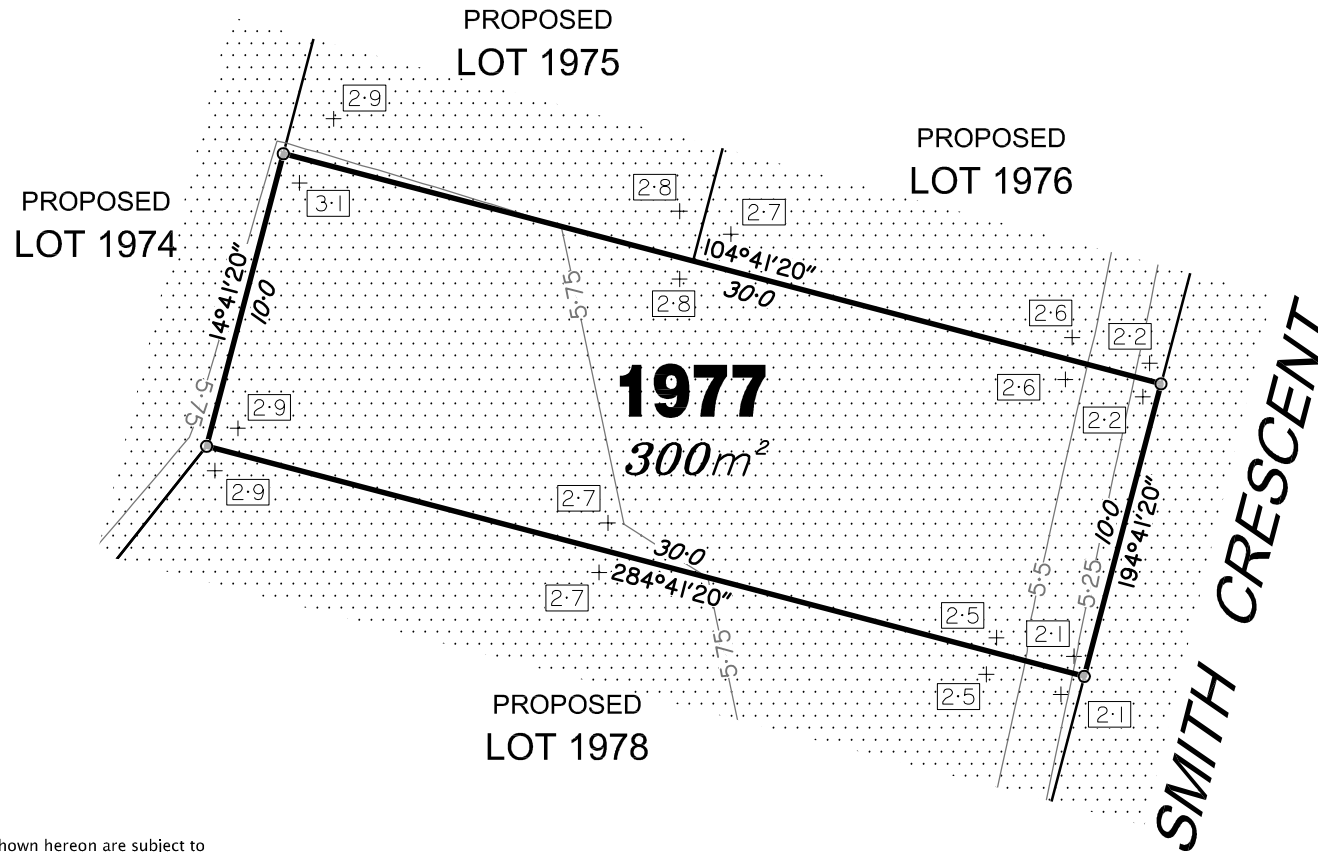
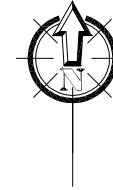


CAPESTONE  
STAGE 18A  
For  
URBEX PTY LTD



**IMPORTANT NOTES:**  
(These notes are an integral part of this plan)

This plan has been prepared for URBEX PTY LTD for the purposes of **A Disclosure Plan Under the Land Sales Act 1984 (as amended)**. It is not to be used by any other person or corporation or for any other purposes and is subject to the following limitations:

Please refer to the approved Development Application for conditions relating to the LOT and to approved Operational Works drawings for services location and possible easements.

THESE DESIGNS AND DRAWINGS ARE COPYRIGHT AND ARE NOT TO BE USED OR REPRODUCED WITHOUT THE WRITTEN PERMISSION OF VERIS

**Data Sources**

- Cadastral Boundaries  
30105 18A100-LC01(G).dwg
- Retaining Walls  
X-B00196-Design.dwg
- Final Surface Contours  
X-B00196-Design.dwg
- Pre-development Surface  
THG survey 20/8/2011
- Pre-Stage 18A Surface  
B00198-3D-Surfaces.dwg

Issue	Revisions	Date	SRPD	Drawn
A	Original	14.03.2019	SRPD	

Locality: MANGO HILL  
Local Authority: MORETON BAY R.C.  
Horizontal Meridian: MGA, Zone 56  
Vertical Level Datum: AHD D  
Scale: 1:250 @ A4  
Designed: Empower Engineers  
Drawn: SRPD  
Checked: MMR  
Plot Date: 14 Mar, 2019  
Computer File Ref: 430105 St18A.DPs(A).dwg

**DISCLOSURE PLAN**  
of Proposed LOT 1977  
being part of  
Lot 392 on SP300679



BRISBANE (07) 3666 4700 WHITSUNDAYS (07) 4945 1722  
TOWNSVILLE (07) 4726 8111  
MACKAY (07) 4951 2911 CAIRNS (07) 4051 6722  
veris.com.au  
ACN 615 735 727  
VERIS AUSTRALIA PTY LTD

Drawing No 430105-DP1977 Issue A

**ADDITIONAL NOTES:**

The LOT dimensions and area shown hereon are subject to final field survey and also to the requirements of Council and any other authority which may have requirements under any relevant legislation.

Final surface contours shown hereon have been supplied by Empower Engineers & Project Managers.

Location of retaining walls are as shown on Engineering design drawings. Their as-constructed location may differ from their design location. Retaining wall heights have been supplied by Empower Engineers & Project Managers.

Compaction of any fill material placed on this site shall be completed to level one inspection and testing services in accordance with AS3798-2007.

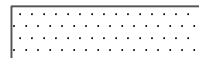
Depth of fill values are calculated from the lower of the pre-development surface or the pre-stage 18 construction (existing surface).

Copyright © Veris Australia Pty Ltd 14/03/2019.

**LEGEND**

Final surface contours based on A.H.D. datum at an interval of 0.25m, shown as: 6.25

Where applicable, areas to be filled are shown as:



Depth of fill, in metres, shown as: 1.9

Retaining wall and retaining wall height, shown on the lower side of the wall, have been drawn from plans supplied by Empower shown as:

