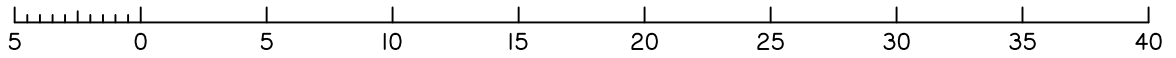


Scale 1:300 - Lengths are in Metres.



**CADASTRAL CONNECTION**

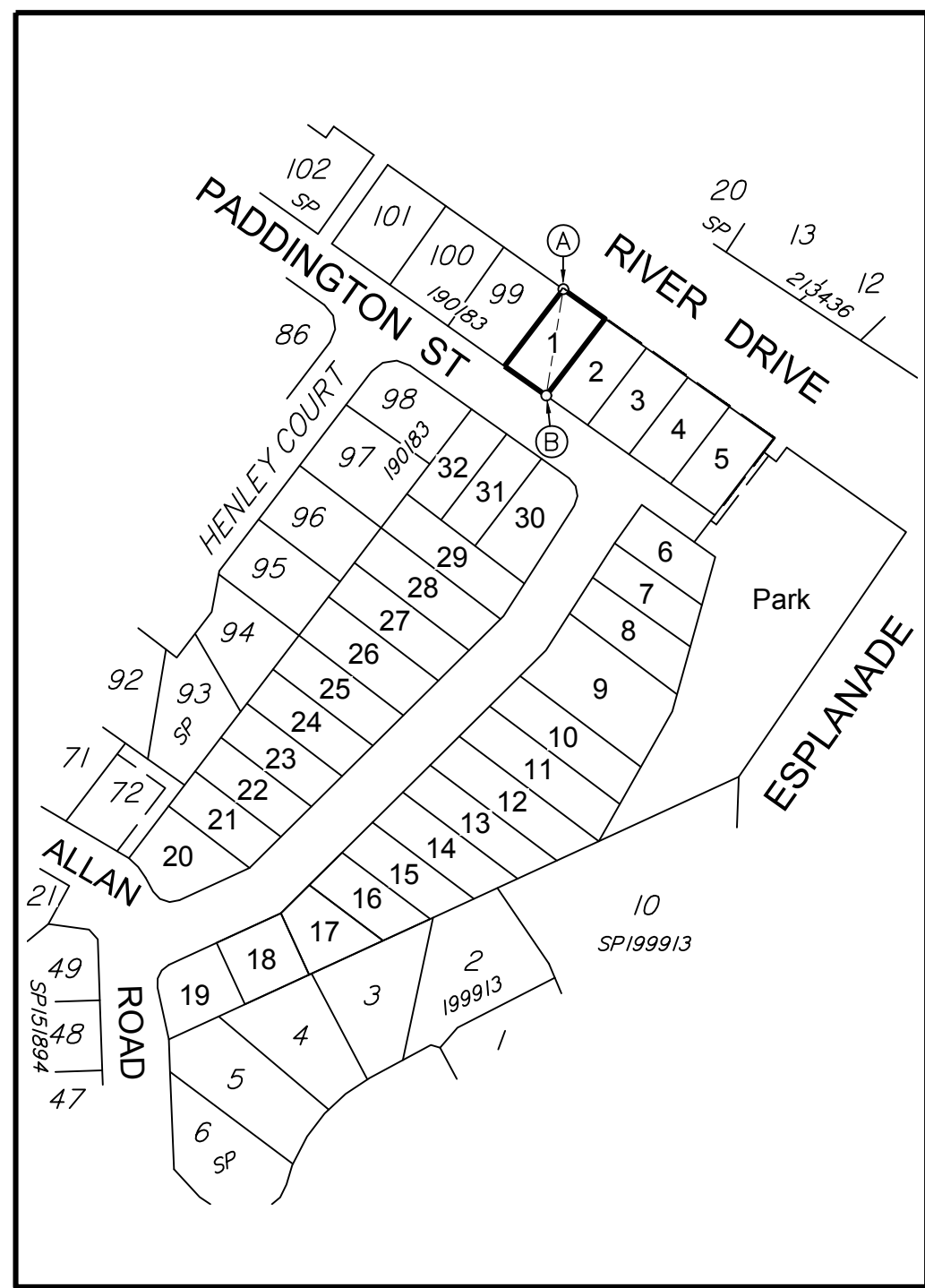
A - B 189°08'15" 31.833

### DISCLOSURE PLAN FOR PROPOSED ALLOTMENT 1

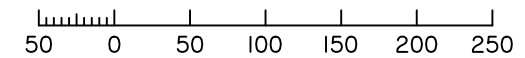
Dated 20th December 2017

This plan shows details of Proposed Allotment 1 on the Subdivision Plan 4891 C-003 Rev G dated 22nd May 2017 which complies with the Development Approval (DA/33913/2017/V3RM dated 12 September 2017, and Operational Works Approval (DA/33913/2017/V4D) dated 5th December 2017, approved by Moreton Bay Regional Council, subject to conditions.

The description of the proposed allotment 1, is as part of Lot 22 on RP137380, and situated at 38 River Drive, Bellmere, commencing at an initial point A being the north eastern most point of Lot 99 on SP190183 and thence bounding off on a bearing of 189°08'15" and a distance of 31.833 to point B at proposed allotment 1, and containing an area of 431 square metres, more or less.



Scale 1:2000 - Lengths are in Metres.

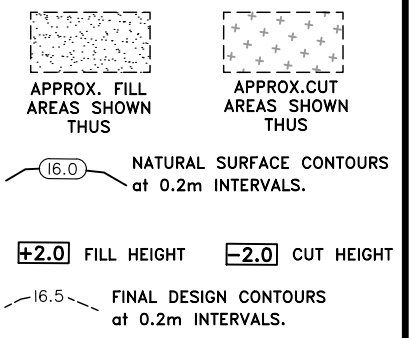


**HARRIDAN Pty Ltd**

### Disclosure Plan

**38 River Drive,  
Bellmere**  
FOR PROPOSED  
ALLOTMENTS 1-32  
Cancelling Lot 22 on RP137380

PROPOSED LOT 1



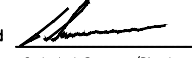
DETAIL SURVEY COMPLETED BY LSD  
31/01/2017

ENGINEERING DESIGN BY URBAN ENGINEERING SOLUTIONS. PLANS 216017-C SERIES REV G dated 21/2/2018

Revisions	Surveyed	Drawn	Checked	Passed	Date
D Amends	LSD	MH	MH	LS	13/4/18
C Electrical	LSD	MH	MH	LS	27/2/18
B Design updates	LSD	MH	MH	LS	8/2/18
A ORIGINAL PLAN	LSD	MH	MH	LS	20/12/17



P.O. Box 6334, Maroochydore BC QLD 4558  
10/1 Newspaper Place, Maroochydore QLD 4558  
Mobile: 0412 666 516  
Email: mail@landsurveyingdynamics.com  
Web: www.landsurveyingdynamics.com  
Land Surveying Dynamics (LSD) Pty Ltd  
ACN 154 593 870

Signed   
Cadastral Surveyor/Director  
Date \_\_\_\_\_

Map Ref.: 9443-11312

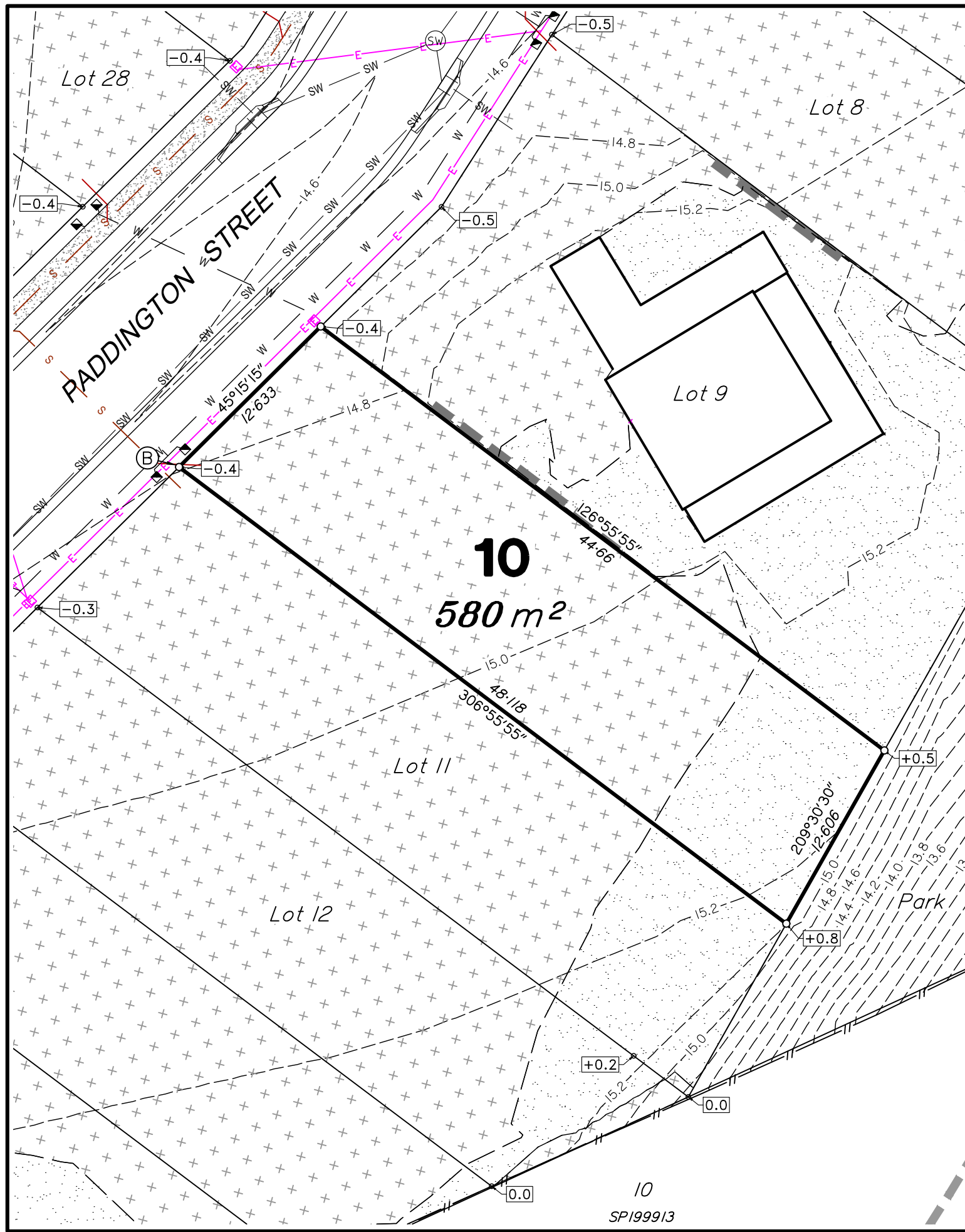
Horiz. Datum MGA Z56  
Origin GNSS CORS

Vert. Datum AHD  
Origin PSM 146312  
RL 16.135 AHD

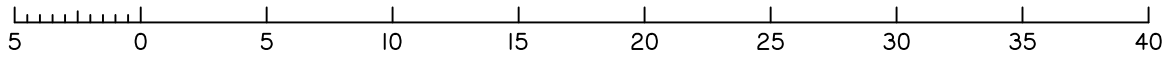
Locality: CABOOLTURE  
Local Government: MORETON BAY REGIONAL COUNCIL

SHEET 1 OF 1 Scale As shown at A3  
COMPUTER FILE 12301 DIS-01  
DRAWING NUMBER 12301-DIS-01 REV. D

2018/04/17 L: \Jobs\Current\12301 Harridan - Caboolture - Caboolture\Proposal\12301 DIS-01.dwg



Scale 1:300 - Lengths are in Metres.



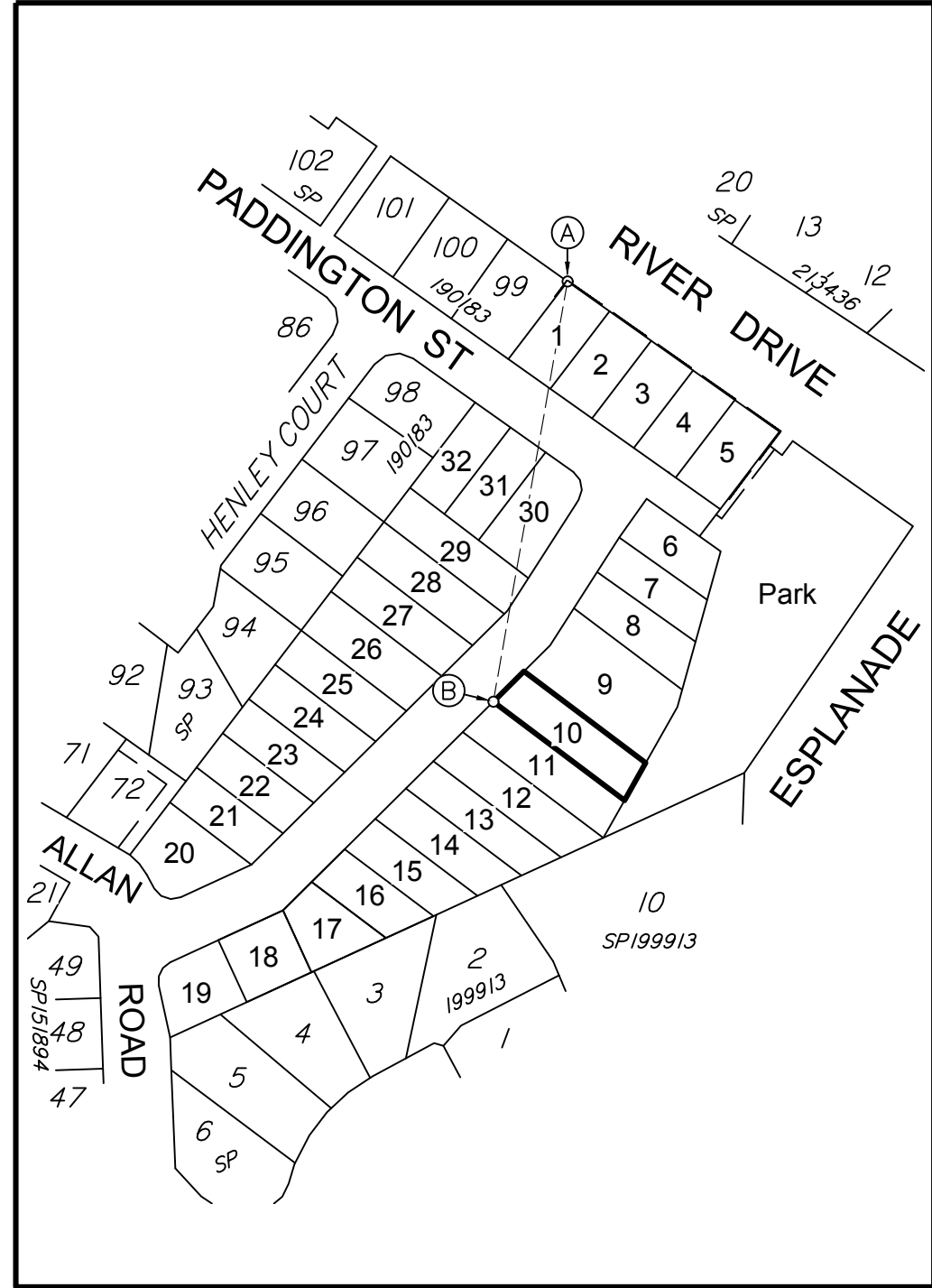
**CADASTRAL CONNECTION**

A - B 190°01'30" 125.019

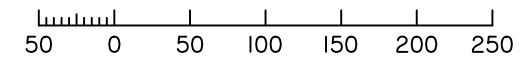
### DISCLOSURE PLAN FOR PROPOSED ALLOTMENT 10 Dated 20th December 2017

This plan shows details of Proposed Allotment 10 on the Subdivision Plan 4891 C-003 Rev G dated 22nd May 2017 which complies with the Development Approval (DA/33913/2017/V3RM dated 12 September 2017, and Operational Works Approval (DA/33913/2017/V4D) dated 5th December 2017, approved by Moreton Bay Regional Council, subject to conditions.

The description of the proposed allotment 10 is as part of Lot 22 on RP137380, and situated at 38 River Drive, Bellmere, commencing at an initial point A being the north eastern most point of Lot 99 on SP190183 and thence bounding off on a bearing of 190°01'30" and a distance of 125.019 to point B at proposed allotment 10, and containing an area of 580 square metres, more or less.



Scale 1:2000 - Lengths are in Metres.

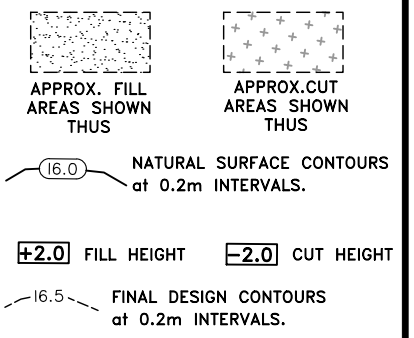


**HARRIDAN Pty Ltd**

### Disclosure Plan

**38 River Drive,  
Bellmere**  
FOR PROPOSED  
ALLOTMENTS 1-32  
Cancelling Lot 22 on RP137380

PROPOSED LOT 10




DETAIL SURVEY COMPLETED BY LSD  
31/01/2017  
ENGINEERING DESIGN BY URBAN ENGINEERING  
SOLUTIONS. PLANS 216017-C SERIES REV G  
dated 21/2/2018

Revisions	Surveyed	Drawn	Checked	Passed	Date
D Amends	LSD	MH	MH	LS	13/4/18
C Electrical	LSD	MH	MH	LS	27/2/18
B Design updates	LSD	MH	MH	LS	8/2/18
A ORIGINAL PLAN	LSD	MH	MH	LS	20/12/17



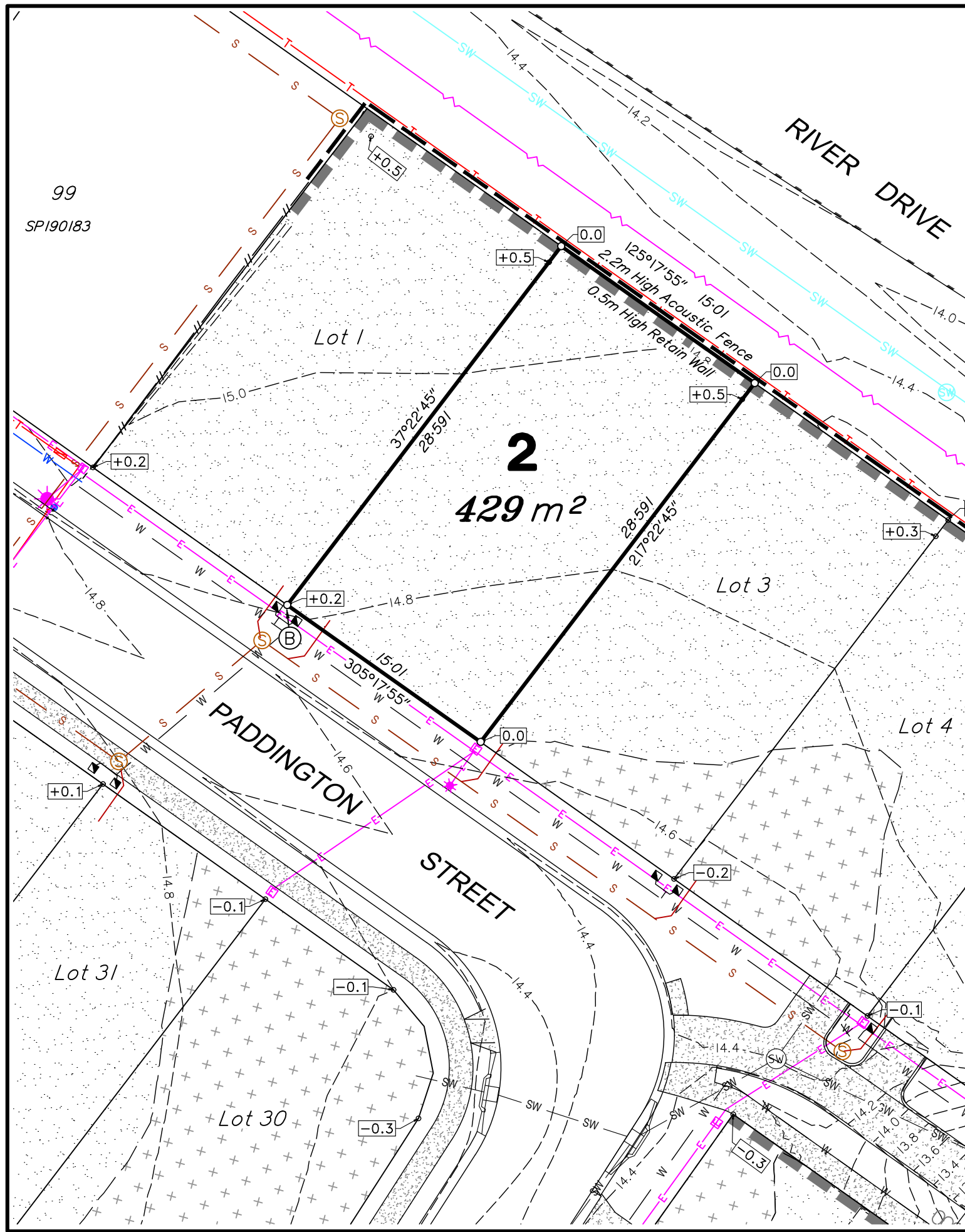
PO Box 6334, Maroochydore BC QLD 4558  
10/1 Newspaper Place, Maroochydore QLD 4558  
Mobile: 0412 666 516  
Email: mail@landsurveyingdynamics.com  
Web: www.landsurveyingdynamics.com  
Land Surveying Dynamics (LSD) Pty Ltd  
ACN 154 593 870

Signed   
Cadastral Surveyor/Director  
Date \_\_\_\_\_

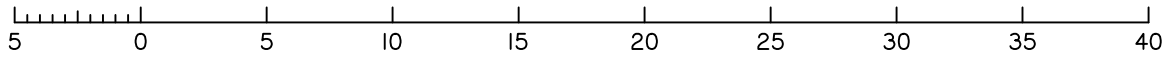
Map Ref.: 9443-11312  
Horiz. Datum MGA Z56  
Origin GNSS CORS  
Vert. Datum AHD  
Origin PSM 146312  
RL 16.135 AHD  
Locality: CABOOLTURE  
Local Government: MORETON BAY REGIONAL COUNCIL

SHEET 1 OF 1 Scale **As shown at A3**  
COMPUTER FILE 12301 DIS-01  
DRAWING NUMBER **12301-DIS-10** REV. **D**

2018/04/17 L: \Jobs\Current\12301 Harridan - Caboolture - Caboolture \Data Survey\Drafting\Proposal\12301 DIS-01.dwg



Scale 1:300 - Lengths are in Metres.



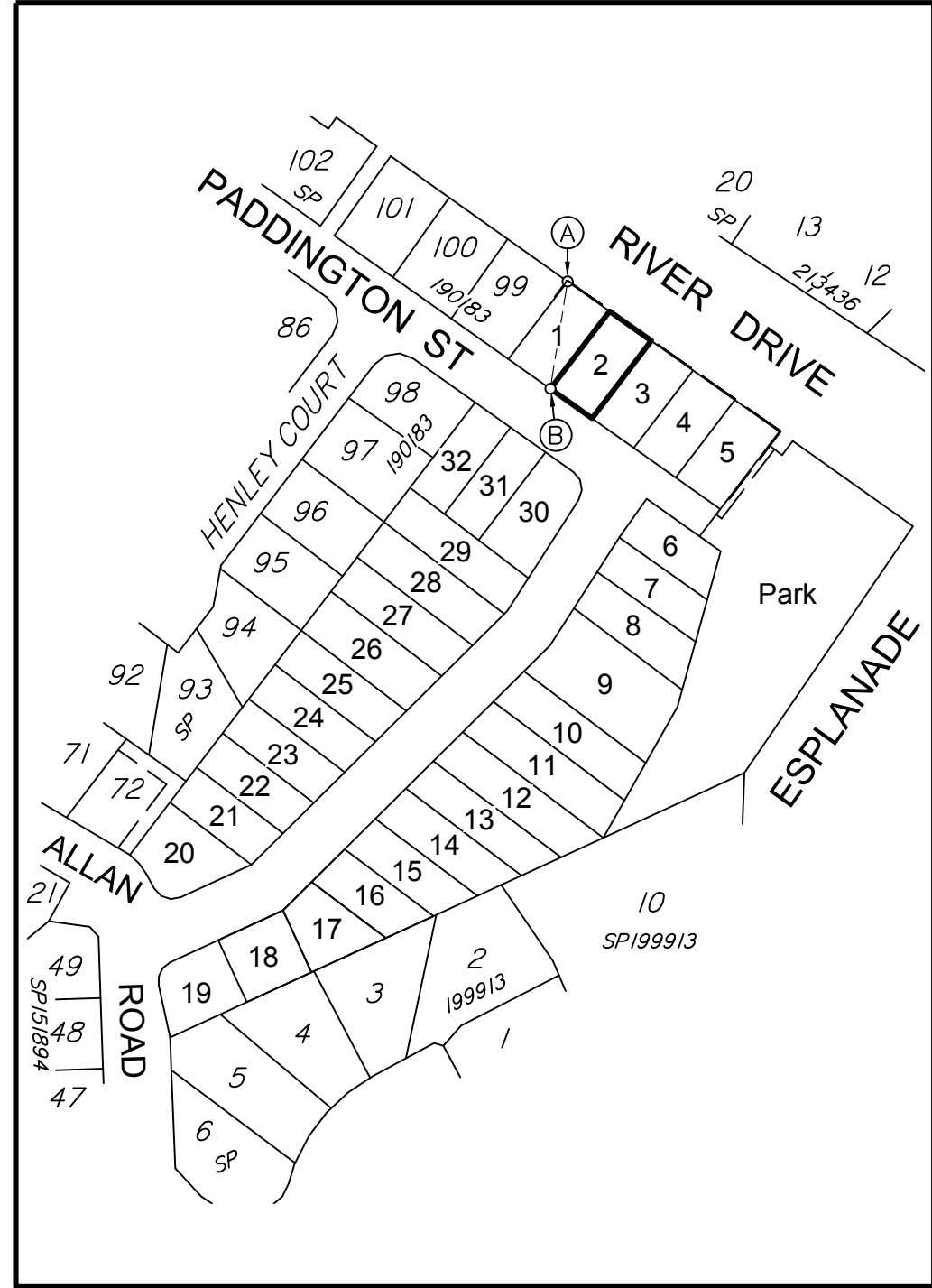
**CADASTRAL CONNECTION**

A - B 189°08'15" 31.833

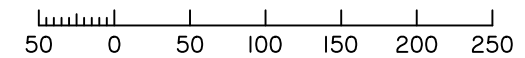
**DISCLOSURE PLAN  
FOR PROPOSED ALLOTMENT 2**  
Dated 20th December 2017

This plan shows details of Proposed Allotment 2 on the Subdivision Plan 4891 C-003 Rev G dated 22nd May 2017 which complies with the Development Approval (DA/33913/2017/V3RM dated 12 September 2017, and Operational Works Approval (DA/33913/2017/V4D) dated 5th December 2017, approved by Moreton Bay Regional Council, subject to conditions.

The description of the proposed allotment 2, is as part of Lot 22 on RP137380, and situated at 38 River Drive, Bellmere, commencing at an initial point A being the north eastern most point of Lot 99 on SP190183 and thence bounding off on a bearing of 189°08'15" and a distance of 31.833 to point B at proposed allotment 2, and containing an area of 429 square metres, more or less.



Scale 1:2000 - Lengths are in Metres.

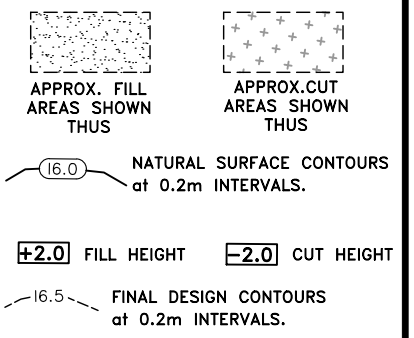


**HARRIDAN Pty Ltd**

**Disclosure Plan**

**38 River Drive,  
Bellmere**  
FOR PROPOSED  
ALLOTMENTS 1-32  
Cancelling Lot 22 on RP137380

**PROPOSED LOT 2**




DETAIL SURVEY COMPLETED BY LSD  
31/01/2017  
ENGINEERING DESIGN BY URBAN ENGINEERING SOLUTIONS. PLANS 216017-C SERIES REV G dated 21/2/2018

Revisions	Surveyed	Drawn	Checked	Passed	Date
D Amends	LSD	MH	MH	LS	13/4/18
C Electrical	LSD	MH	MH	LS	27/2/18
B Design updates	LSD	MH	MH	LS	8/2/18
A ORIGINAL PLAN	LSD	MH	MH	LS	20/12/17



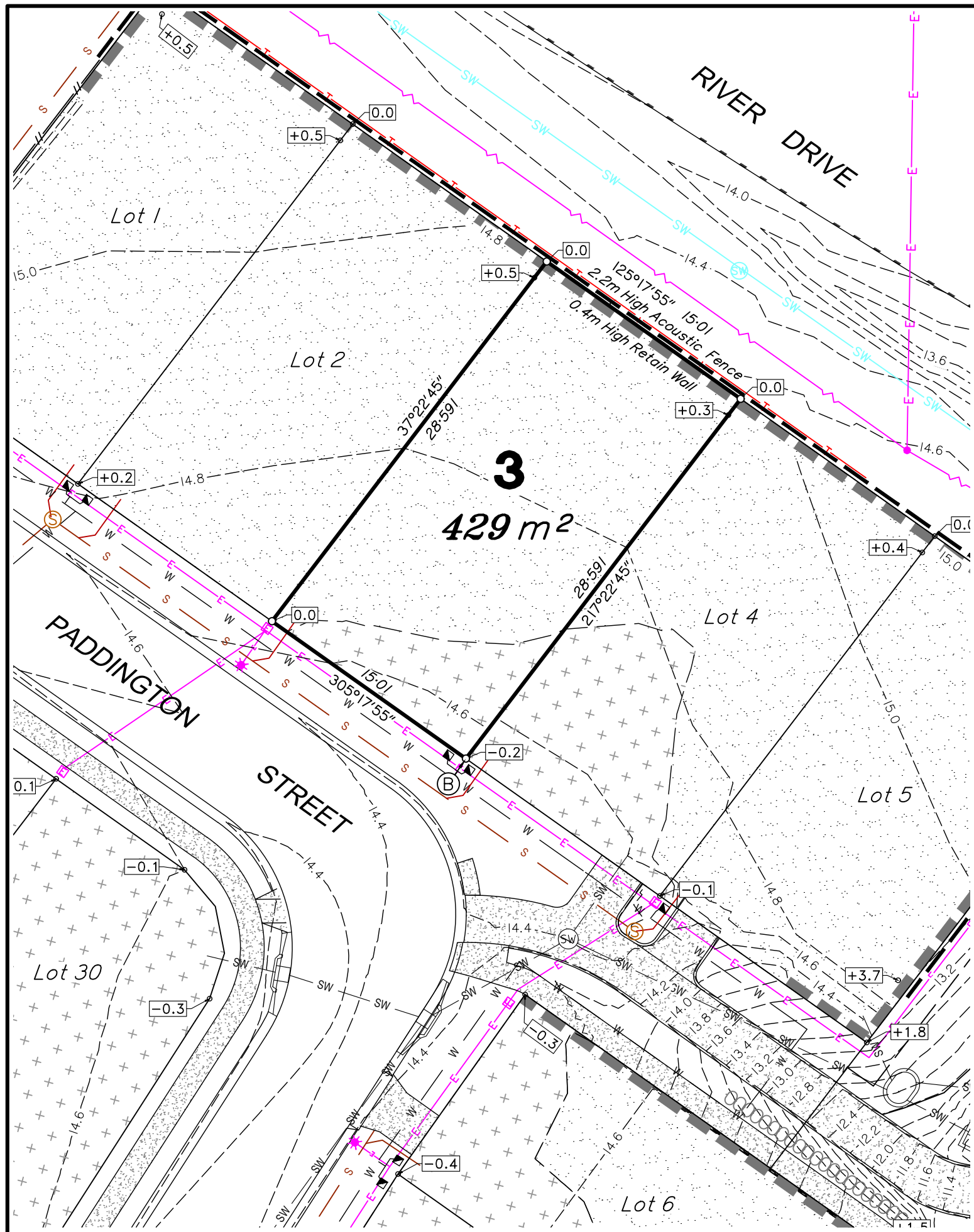
PO Box 6334, Maroochydore BC QLD 4558  
10/1 Newspaper Place, Maroochydore QLD 4558  
Mobile: 0412 666 516  
Email: mail@landsurveyingdynamics.com  
Web: www.landsurveyingdynamics.com  
Land Surveying Dynamics (LSD) Pty Ltd  
ACN 154 593 870

Signed   
Cadastral Surveyor/Director  
Date \_\_\_\_\_

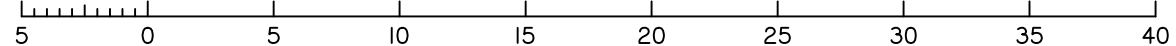
Map Ref.: 9443-11312  
Horiz. Datum MGA Z56  
Origin GNSS CORS  
Vert. Datum AHD  
Origin PSM 146312  
RL 16.135 AHD  
Locality: CABOOLTURE  
Local Government: MORETON BAY REGIONAL COUNCIL

SHEET 1 OF 1  
COMPUTER FILE 12301 DIS-01  
DRAWING NUMBER  
**12301-DIS-02**  
Scale As shown at A3  
REV. **D**

2018/04/17 L: \Jobs\Current\12301 Harridan - Caboolture\Caboolture\Drafting\Proposal\12301 DIS-01.dwg



Scale 1:300 - Lengths are in Metres.



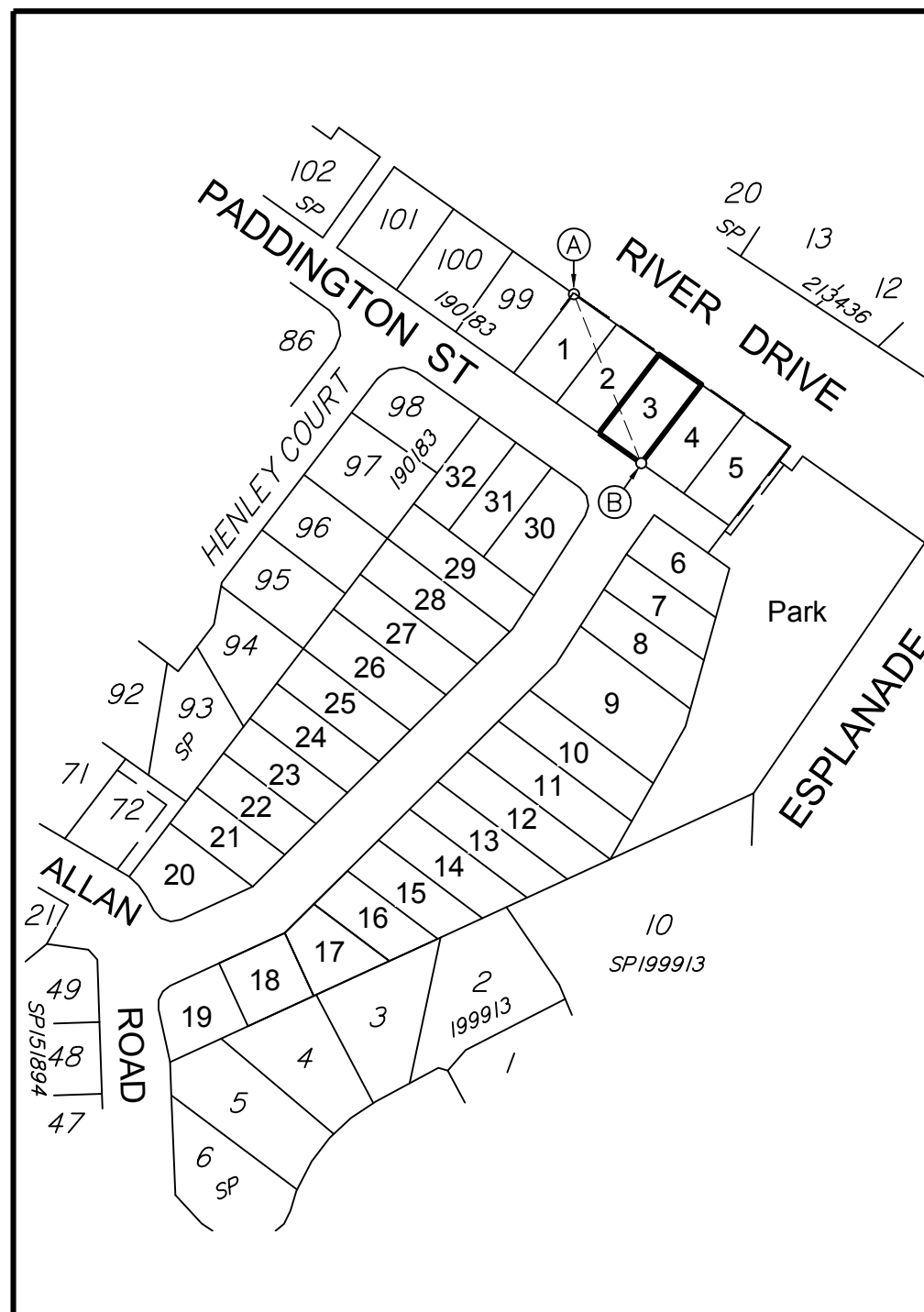
**CADASTRAL CONNECTION**

A - B 158°15'50" 52.509

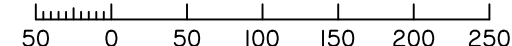
### DISCLOSURE PLAN FOR PROPOSED ALLOTMENT 3 Dated 20th December 2017

This plan shows details of Proposed Allotment 3 on the Subdivision Plan 4891 C-003 Rev G dated 22nd May 2017 which complies with the Development Approval (DA/33913/2017/V3RM dated 12 September 2017, and Operational Works Approval (DA/33913/2017/V4D) dated 5th December 2017, approved by Moreton Bay Regional Council, subject to conditions.

The description of the proposed allotment 3, is as part of Lot 22 on RP137380, and situated at 38 River Drive, Bellmere, commencing at an initial point A being the north eastern most point of Lot 99 on SP190183 and thence bounding off on a bearing of 158°15'50 and a distance of 52.509 to point B at proposed allotment 3, and containing an area of 429 square metres, more or less.



Scale 1:2000 - Lengths are in Metres.



**HARRIDAN Pty Ltd**

### Disclosure Plan

**38 River Drive,  
Bellmere**  
FOR PROPOSED  
ALLOTMENTS 1-32  
Cancelling Lot 22 on RP137380

PROPOSED LOT 3



16.0 NATURAL SURFACE CONTOURS at 0.2m INTERVALS.

+2.0 FILL HEIGHT -2.0 CUT HEIGHT

16.5 FINAL DESIGN CONTOURS at 0.2m INTERVALS.

DETAIL SURVEY COMPLETED BY LSD  
31/01/2017

ENGINEERING DESIGN BY URBAN ENGINEERING SOLUTIONS. PLANS 216017-C SERIES REV G dated 21/2/2018

Revisions	Surveyed	Drawn	Checked	Passed	Date
D Amends	LSD	MH	MH	LS	13/4/18
C Electrical	LSD	MH	MH	LS	27/2/18
B Design updates	LSD	MH	MH	LS	8/2/18
A ORIGINAL PLAN	LSD	MH	MH	LS	20/12/17



PO Box 6334, Maroochydore BC QLD 4558  
10/1 Newspaper Place, Maroochydore QLD 4558  
Mobile: 0412 666 516  
Email: mail@landsurveyingdynamics.com  
Web: www.landsurveyingdynamics.com  
Land Surveying Dynamics (LSD) Pty Ltd  
ACN 154 593 870

Signed   
Cadastral Surveyor/Director  
Date \_\_\_\_\_

Map Ref.: 9443-11312

Horiz. Datum MGA Z56

Origin GNSS CORS

Vert. Datum AHD

Origin PSM 146312  
RL 16.135 AHD

Locality: CABOOLTURE

Local Government: MORETON BAY REGIONAL COUNCIL

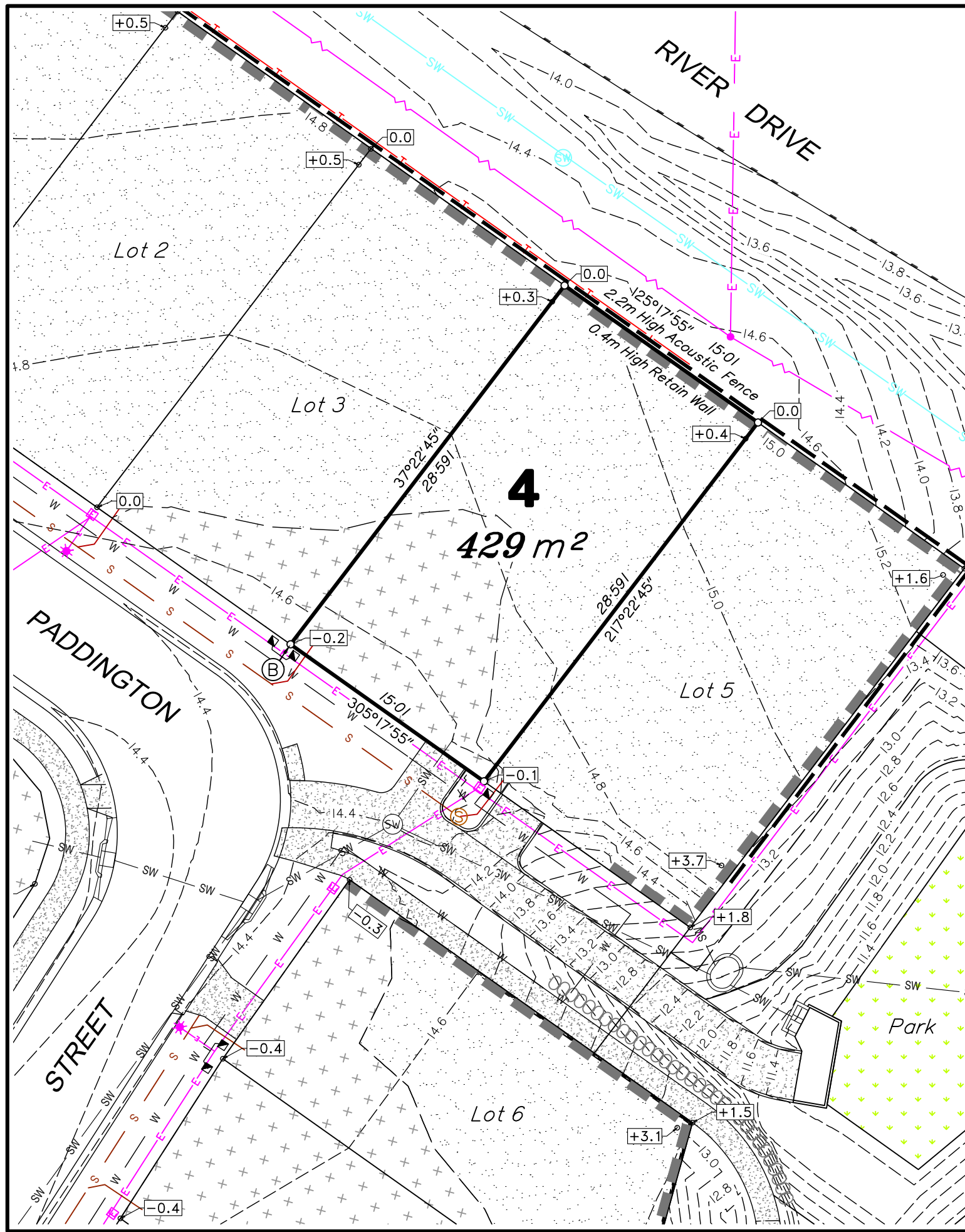
SHEET 1 OF 1 Scale As shown at A3

COMPUTER FILE 12301-DIS-01

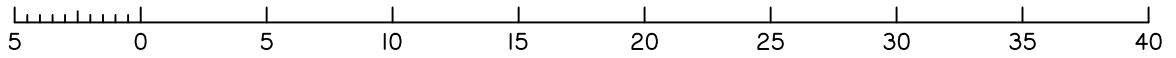
DRAWING NUMBER REV.

**12301-DIS-03 D**

2018/04/17 L: \Jobs\Current\12301 Harridan - Caboolture - Caboolture \Data Survey\Drafting\Proposal\12301-DIS-01.dwg



Scale 1:300 - Lengths are in Metres.



**CADASTRAL CONNECTION**

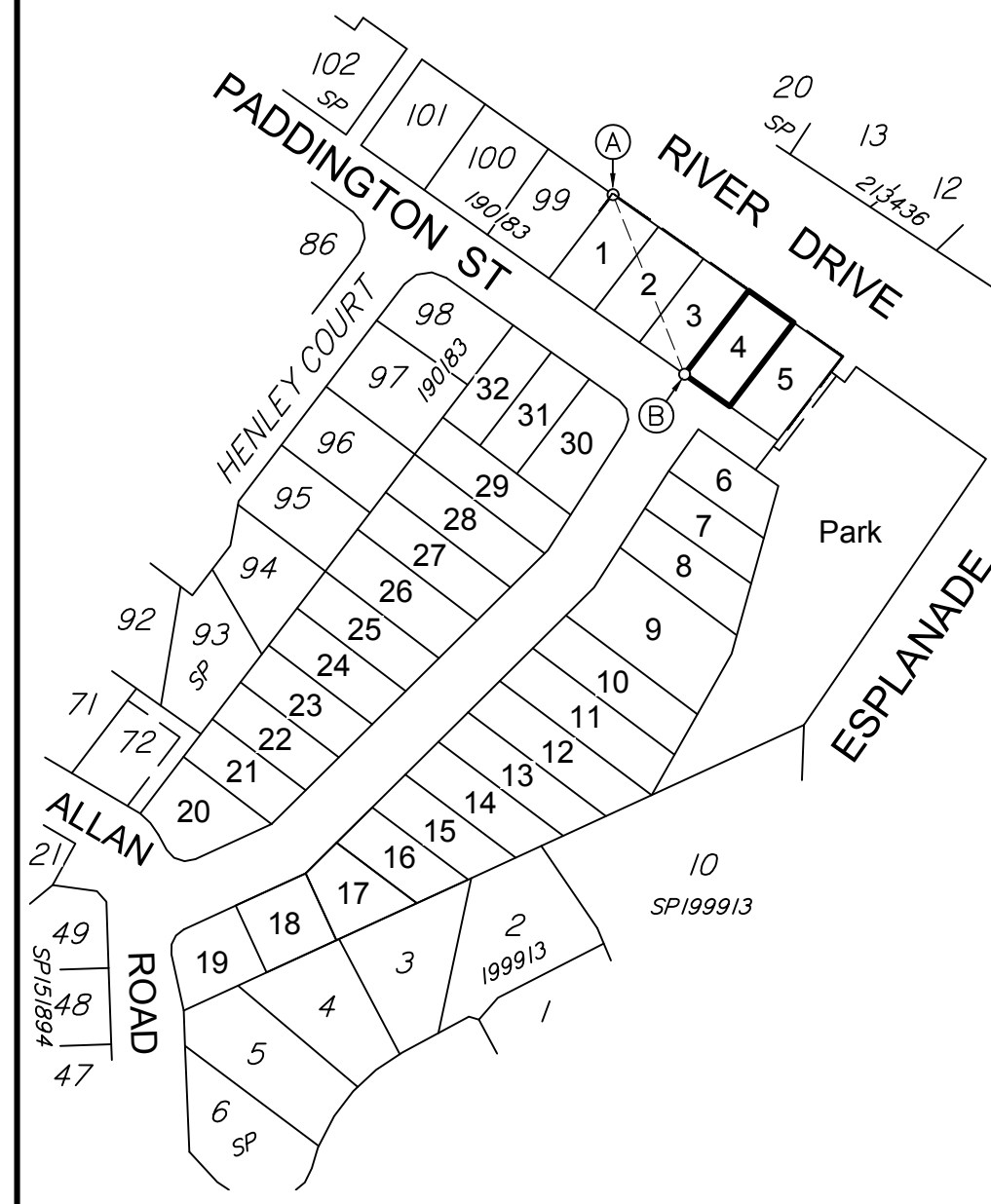
A - B 158°15'50" 52.509

**DISCLOSURE PLAN  
FOR PROPOSED ALLOTMENT 4**  
Dated 20th December 2017

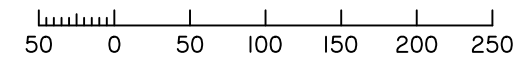
This plan shows details of Proposed Allotment 4 on the Subdivision Plan 4891 C-003 Rev G dated 22nd May 2017 which complies with the Development Approval (DA/33913/2017/V3RM dated 12 September 2017, and Operational Works Approval (DA/33913/2017/V4D) dated 5th December 2017, approved by Moreton Bay Regional Council, subject to conditions.

The description of the proposed allotment 4, is as part of Lot 22 on RP137380, and situated at 38 River Drive, Bellmere, commencing at an initial point A being the north eastern most point of Lot 99 on SP190183 and thence bounding off on a bearing of 158°15'50 and a distance of 52.509 to point B at proposed allotment 4, and containing an area of 429 square metres, more or less.

Lot 4 has a Mandatory Driveway location - as shown on detail Driveway to be constructed as part of the Development Works



Scale 1:2000 - Lengths are in Metres.

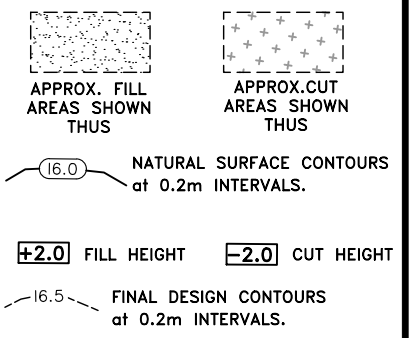


**HARRIDAN Pty Ltd**

**Disclosure Plan**

**38 River Drive,  
Bellmere**  
FOR PROPOSED  
ALLOTMENTS 1-32  
Cancelling Lot 22 on RP137380

**PROPOSED LOT 4**




DETAIL SURVEY COMPLETED BY LSD  
31/01/2017  
ENGINEERING DESIGN BY URBAN ENGINEERING SOLUTIONS. PLANS 216017-C SERIES REV G dated 21/2/2018

Revisions	Surveyed	Drawn	Checked	Passed	Date
D Amends	LSD	MH	MH	LS	13/4/18
C Electrical	LSD	MH	MH	LS	27/2/18
B Design updates	LSD	MH	MH	LS	8/2/18
A ORIGINAL PLAN	LSD	MH	MH	LS	20/12/17



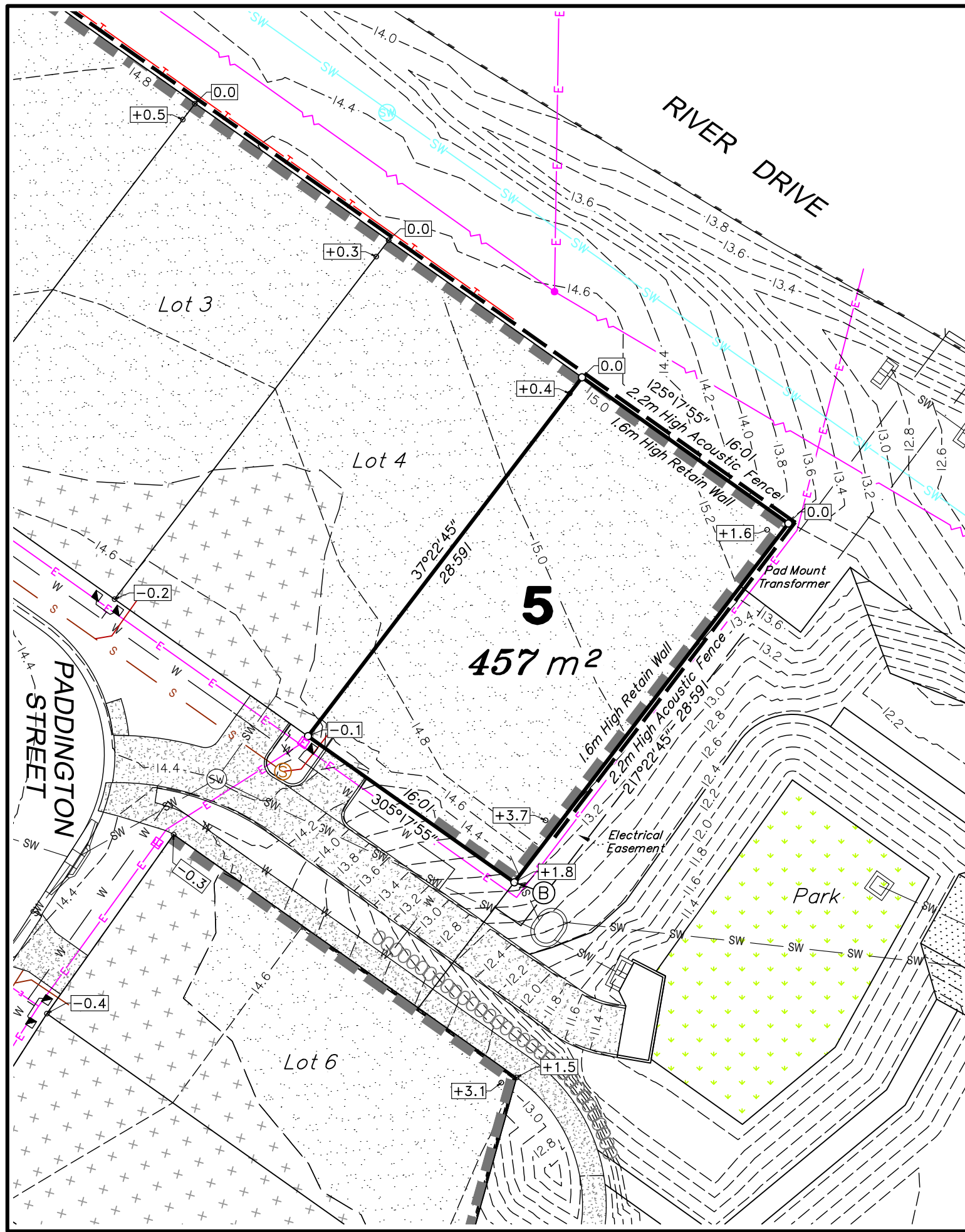
PO Box 6334, Maroochydore BC QLD 4558  
10/1 Newspaper Place, Maroochydore QLD 4558  
Mobile: 0412 666 516  
Email: mail@landsurveyingdynamics.com  
Web: www.landsurveyingdynamics.com  
Land Surveying Dynamics (LSD) Pty Ltd  
ACN 154 593 870

Signed   
Cadastral Surveyor/Director  
Date \_\_\_\_\_

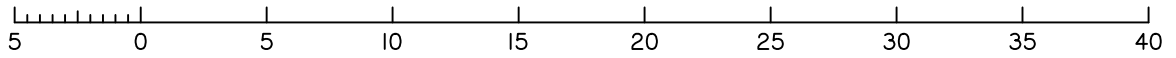
Map Ref.: 9443-11312  
Horiz. Datum MGA Z56  
Origin GNSS CORS  
Vert. Datum AHD  
Origin PSM 146312  
RL 16.135 AHD  
Locality: CABOOLTURE  
Local Government: MORETON BAY REGIONAL COUNCIL

SHEET 1 OF 1 Scale As shown at A3  
COMPUTER FILE 12301 DIS-01  
DRAWING NUMBER 12301-DIS-04 REV. D

2018/04/17 L: \Jobs\Current\12301 Harridan - Caboolture \Data Survey\Drafting\Proposal\12301-DIS-01.dwg



Scale 1:300 - Lengths are in Metres.



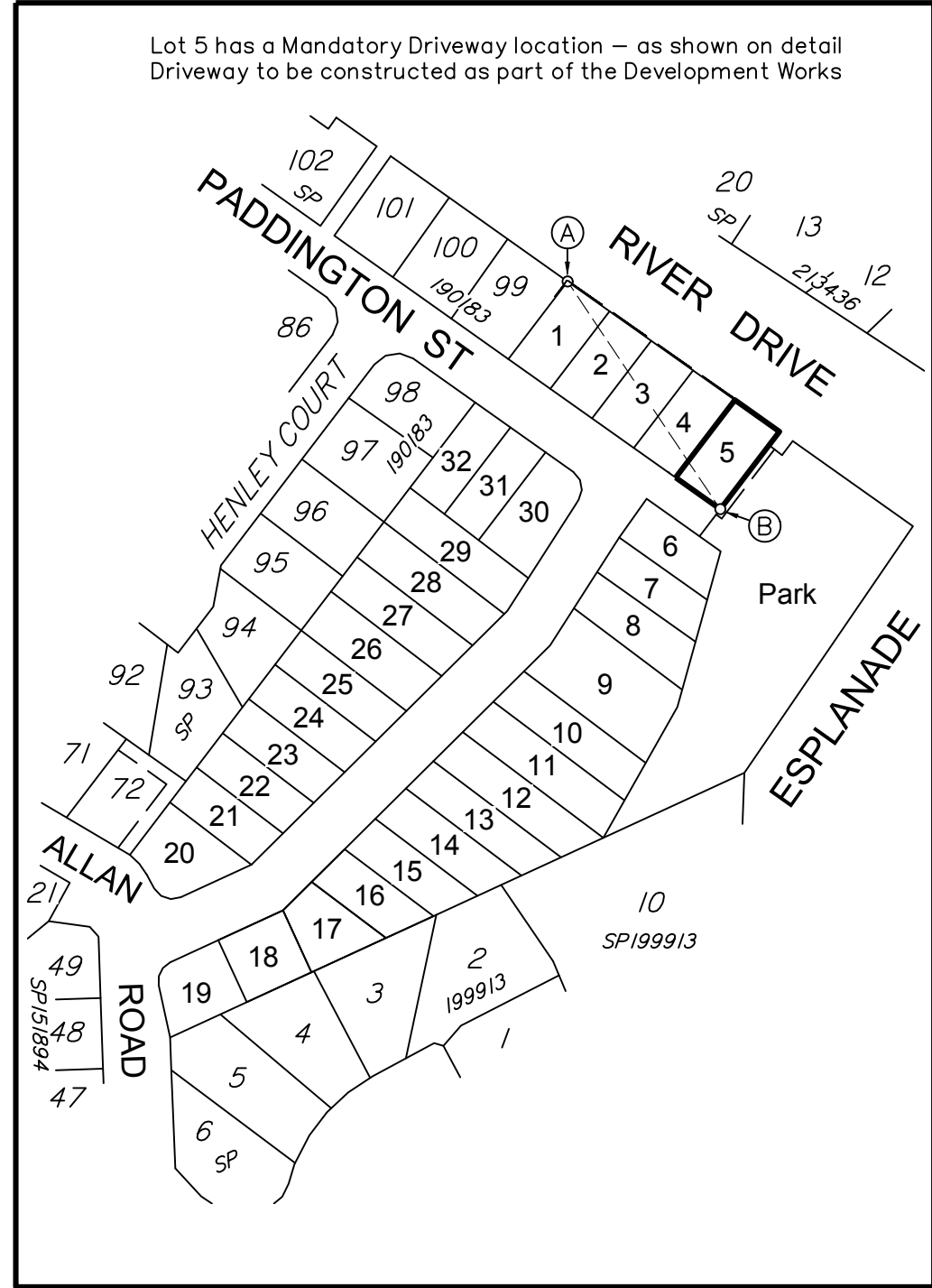
**CADASTRAL CONNECTION**

A - B 146°08'05" 80.328

**DISCLOSURE PLAN  
FOR PROPOSED ALLOTMENT 5**  
Dated 20th December 2017

This plan shows details of Proposed Allotment 5 on the Subdivision Plan 4891 C-003 Rev G dated 22nd May 2017 which complies with the Development Approval (DA/33913/2017/V3RM dated 12 September 2017, and Operational Works Approval (DA/33913/2017/V4D) dated 5th December 2017, approved by Moreton Bay Regional Council, subject to conditions.

The description of the proposed allotment 5, is as part of Lot 22 on RP137380, and situated at 38 River Drive, Bellmere, commencing at an initial point A being the north eastern most point of Lot 99 on SP190183 and thence bounding off on a bearing of 146°08'05 and a distance of 80.328 to point B at proposed allotment 5, and containing an area of 457 square metres, more or less.



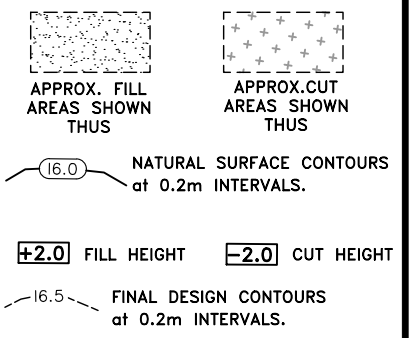
Lot 5 has a Mandatory Driveway location – as shown on detail Driveway to be constructed as part of the Development Works

**HARRIDAN Pty Ltd**

**Disclosure Plan**

**38 River Drive,  
Bellmere**  
FOR PROPOSED  
ALLOTMENTS 1-32  
Cancelling Lot 22 on RP137380

**PROPOSED LOT 5**

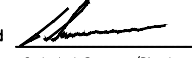


DETAIL SURVEY COMPLETED BY LSD  
31/01/2017  
ENGINEERING DESIGN BY URBAN ENGINEERING SOLUTIONS. PLANS 216017-C SERIES REV G dated 21/2/2018

Revisions	Surveyed	Drawn	Checked	Passed	Date
D Amends	LSD	MH	MH	LS	13/4/18
C Electrical	LSD	MH	MH	LS	27/2/18
B Design updates	LSD	MH	MH	LS	8/2/18
A ORIGINAL PLAN	LSD	MH	MH	LS	20/12/17



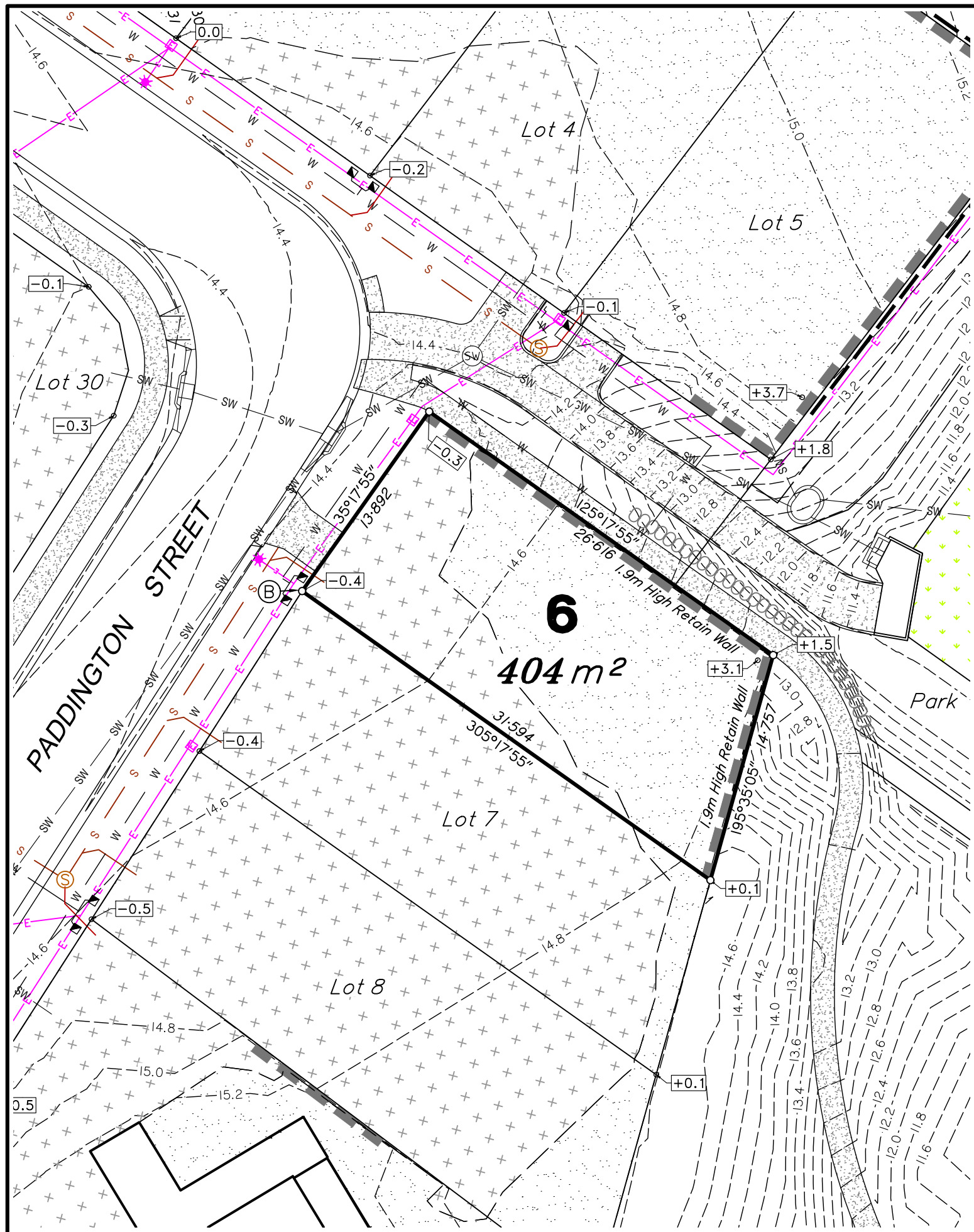
PO Box 6334, Maroochydore BC QLD 4558  
10/1 Newspaper Place, Maroochydore QLD 4558  
Mobile: 0412 666 516  
Email: mail@landsurveyingdynamics.com  
Web: www.landsurveyingdynamics.com  
Land Surveying Dynamics (LSD) Pty Ltd  
ACN 154 593 870

Signed   
Cadastral Surveyor/Director  
Date \_\_\_\_\_

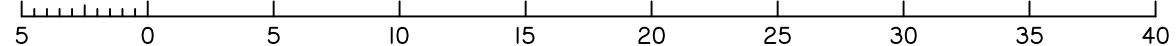
Map Ref.: 9443-11312  
Horiz. Datum MGA Z56  
Origin GNSS CORS  
Vert. Datum AHD  
Origin PSM 146312  
RL 16.135 AHD  
Locality: CABOOLTURE  
Local Government: MORETON BAY REGIONAL COUNCIL

SHEET 1 OF 1  
COMPUTER FILE 12301 DIS-01  
DRAWING NUMBER **12301-DIS-05**  
Scale **As shown at A3**  
REV. **D**

2018/04/17 L: \Jobs\Current\12301 Harridan - Caboolture - Caboolture \Data Survey\Drafting\Proposal\12301 DIS-01.dwg



Scale 1:300 - Lengths are in Metres.



**CADASTRAL CONNECTION**

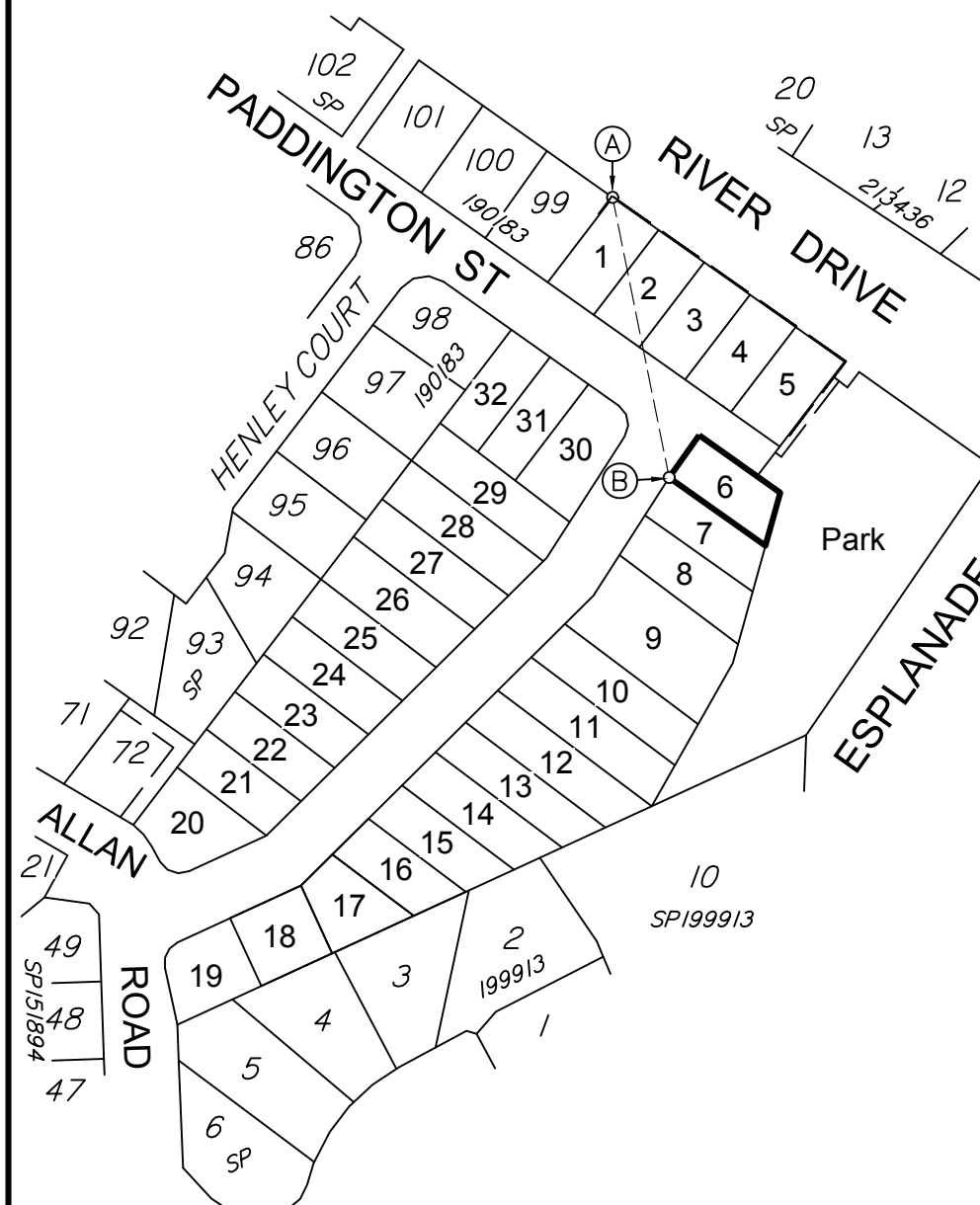
A - B 168°34'30" 76.531

### DISCLOSURE PLAN FOR PROPOSED ALLOTMENT 6 Dated 20th December 2017

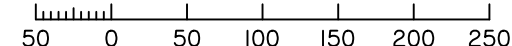
This plan shows details of Proposed Allotment 6 on the Subdivision Plan 4891 C-003 Rev G dated 22nd May 2017 which complies with the Development Approval (DA/33913/2017/V3RM dated 12 September 2017, and Operational Works Approval (DA/33913/2017/V4D) dated 5th December 2017, approved by Moreton Bay Regional Council, subject to conditions.

The description of the proposed allotment 6 is as part of Lot 22 on RP137380, and situated at 38 River Drive, Bellmere, commencing at an initial point A being the north eastern most point of Lot 99 on SP190183 and thence bounding off on a bearing of 168°34'30" and a distance of 76.531 to point B at proposed allotment 6, and containing an area of 404 square metres, more or less.

Lot 6 has a Mandatory Driveway location - as shown on detail Driveway not constructed as part of the Development Works



Scale 1:2000 - Lengths are in Metres.



**HARRIDAN Pty Ltd**

### Disclosure Plan

**38 River Drive,  
Bellmere**  
FOR PROPOSED  
ALLOTMENTS 1-32  
Cancelling Lot 22 on RP137380

PROPOSED LOT 6



16.0 NATURAL SURFACE CONTOURS at 0.2m INTERVALS.

+2.0 FILL HEIGHT -2.0 CUT HEIGHT

16.5 FINAL DESIGN CONTOURS at 0.2m INTERVALS.

DETAIL SURVEY COMPLETED BY LSD  
31/01/2017

ENGINEERING DESIGN BY URBAN ENGINEERING SOLUTIONS. PLANS 216017-C SERIES REV G dated 21/2/2018

Revisions	Surveyed	Drawn	Checked	Passed	Date
D Amends	LSD	MH	MH	LS	13/4/18
C Electrical	LSD	MH	MH	LS	27/2/18
B Design updates	LSD	MH	MH	LS	8/2/18
A ORIGINAL PLAN	LSD	MH	MH	LS	20/12/17



PO Box 6334, Maroochydore BC QLD 4558  
10/1 Newspaper Place, Maroochydore QLD 4558  
Mobile: 0412 666 516  
Email: mail@landsurveyingdynamics.com  
Web: www.landsurveyingdynamics.com  
Land Surveying Dynamics (LSD) Pty Ltd  
ACN 154 593 870

Signed   
Cadastral Surveyor/Director

Date \_\_\_\_\_

Map Ref.: 9443-11312

Horiz. Datum MGA Z56

Origin GNSS CORS

Vert. Datum AHD

Origin PSM 146312

RL 16.135 AHD

Locality: CABOOLTURE

Local Government: MORETON BAY REGIONAL COUNCIL

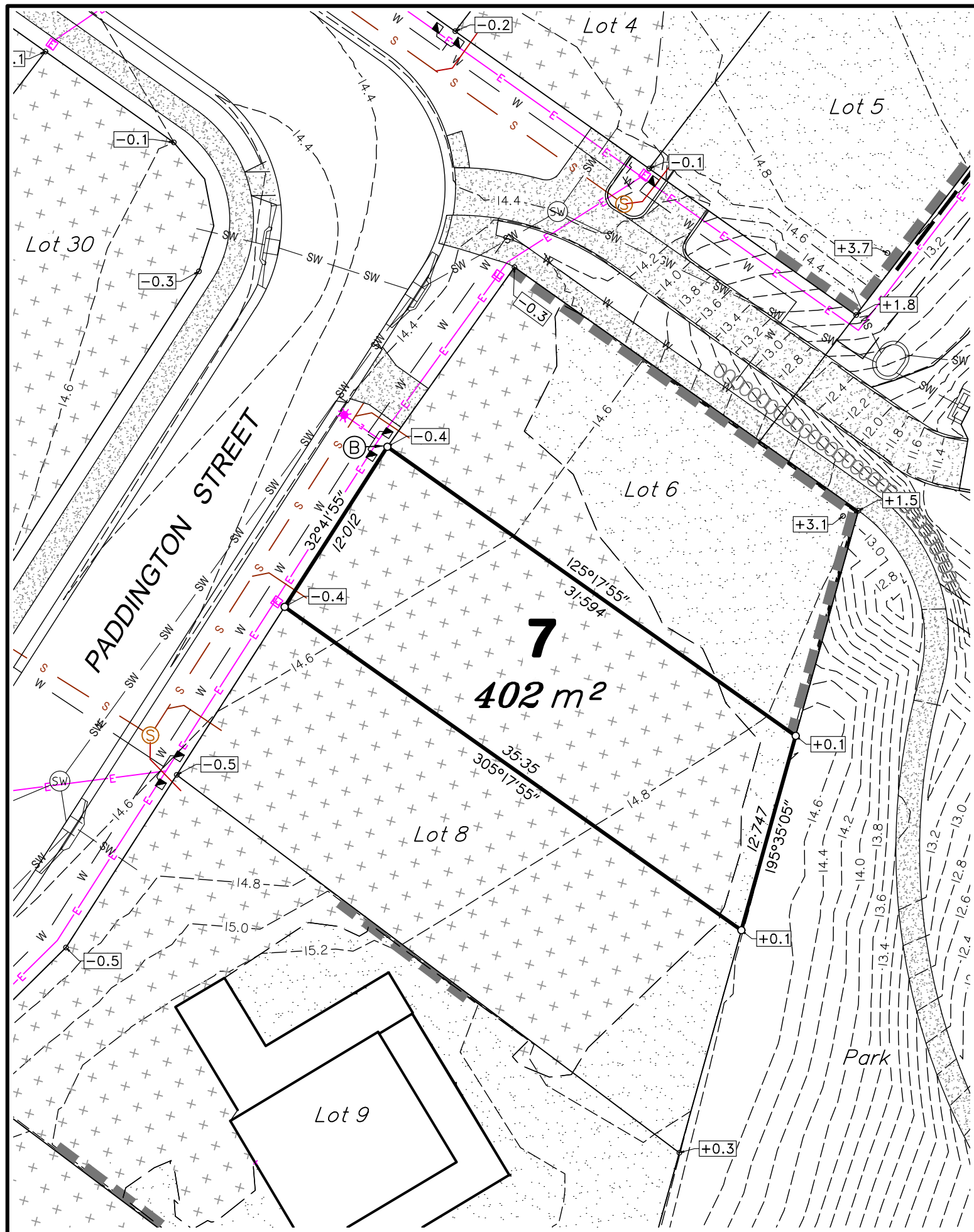
SHEET 1 OF 1 Scale As shown at A3

COMPUTER FILE 12301 DIS-01

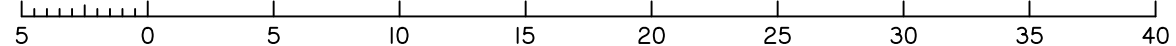
DRAWING NUMBER REV.

**12301-DIS-06 D**

2018/04/17 L: \Jobs\Current\12301 Harridan - Caboolture - Caboolture \Data Survey\Drafting\Proposal\12301 DIS-01.dwg



Scale 1:300 - Lengths are in Metres.



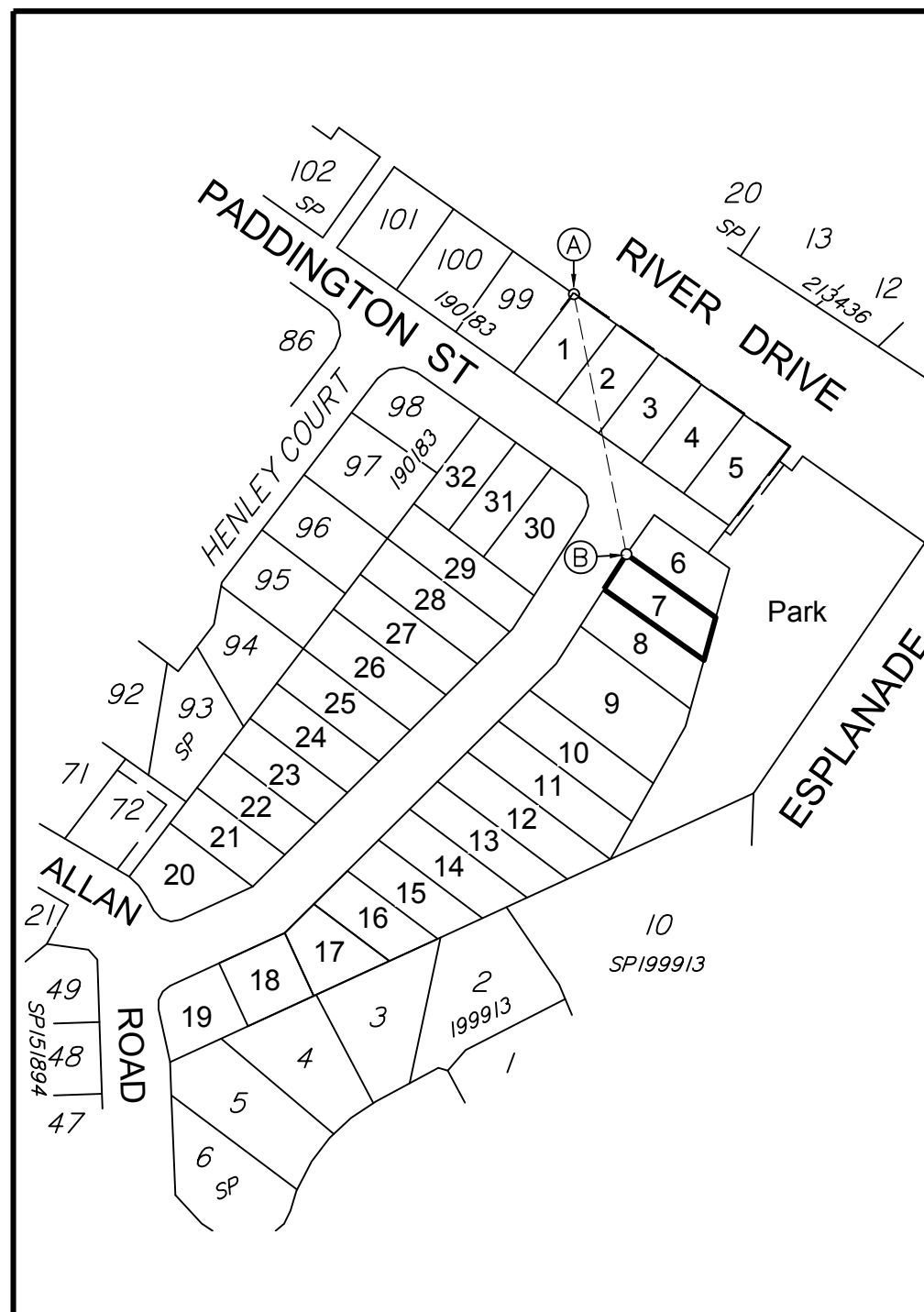
**CADASTRAL CONNECTION**

A - B 168°34'30" 76.531

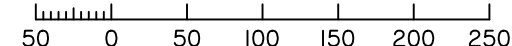
### DISCLOSURE PLAN FOR PROPOSED ALLOTMENT 7 Dated 20th December 2017

This plan shows details of Proposed Allotment 7 on the Subdivision Plan 4891 C-003 Rev G dated 22nd May 2017 which complies with the Development Approval (DA/33913/2017/V3RM dated 12 September 2017, and Operational Works Approval (DA/33913/2017/V4D) dated 5th December 2017, approved by Moreton Bay Regional Council, subject to conditions.

The description of the proposed allotment 7 is as part of Lot 22 on RP137380, and situated at 38 River Drive, Bellmere, commencing at an initial point A being the north eastern most point of Lot 99 on SP190183 and thence bounding off on a bearing of 168°34'30" and a distance of 76.531 to point B at proposed allotment 7, and containing an area of 402 square metres, more or less.



Scale 1:2000 - Lengths are in Metres.



**HARRIDAN Pty Ltd**

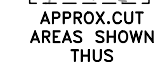
### Disclosure Plan

**38 River Drive,  
Bellmere**  
FOR PROPOSED  
ALLOTMENTS 1-32  
Cancelling Lot 22 on RP137380

PROPOSED LOT 7



APPROX. FILL AREAS SHOWN THUS



APPROX. CUT AREAS SHOWN THUS

16.0 NATURAL SURFACE CONTOURS at 0.2m INTERVALS.

+2.0 FILL HEIGHT -2.0 CUT HEIGHT

16.5 FINAL DESIGN CONTOURS at 0.2m INTERVALS.

DETAIL SURVEY COMPLETED BY LSD  
31/01/2017

ENGINEERING DESIGN BY URBAN ENGINEERING SOLUTIONS. PLANS 216017-C SERIES REV G dated 21/2/2018

Revisions	Surveyed	Drawn	Checked	Passed	Date
D Amends	LSD	MH	MH	LS	13/4/18
C Electrical	LSD	MH	MH	LS	27/2/18
B Design updates	LSD	MH	MH	LS	8/2/18
A ORIGINAL PLAN	LSD	MH	MH	LS	20/12/17



P.O. Box 6334, Maroochydore BC QLD 4558  
10/1 Newspaper Place, Maroochydore QLD 4558  
Mobile: 0412 666 516  
Email: mail@landsurveyingdynamics.com  
Web: www.landsurveyingdynamics.com  
Land Surveying Dynamics (LSD) Pty Ltd  
ACN 154 593 870

Signed Cadastral Surveyor/Director

Date \_\_\_\_\_

Map Ref.: 9443-11312

Horiz. Datum MGA Z56

Origin GNSS CORS

Vert. Datum AHD

Origin PSM 146312

RL 16.135 AHD

Locality: CABOOLTURE

Local Government: MORETON BAY REGIONAL COUNCIL

SHEET 1 OF 1 Scale As shown at A3

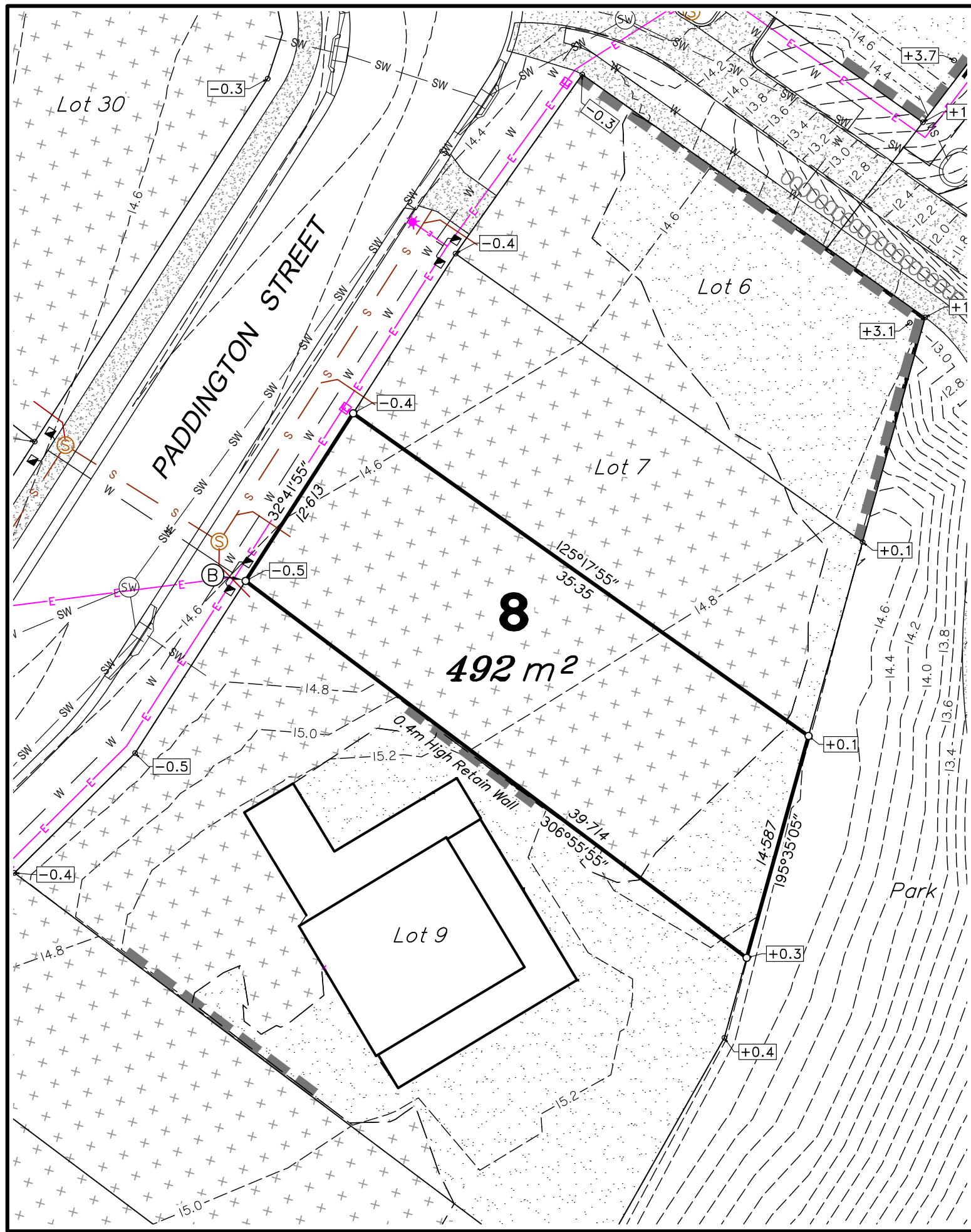
COMPUTER FILE 12301-DIS-01

DRAWING NUMBER REV.

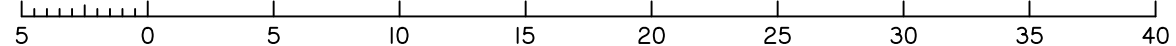
**12301-DIS-07 D**

2018/04/17 L: \Jobs\Current\12301 Harridan - Caboolture - Caboolture \Data Survey\Drafting\Proposal\12301-DIS-01.dwg





Scale 1:300 - Lengths are in Metres.



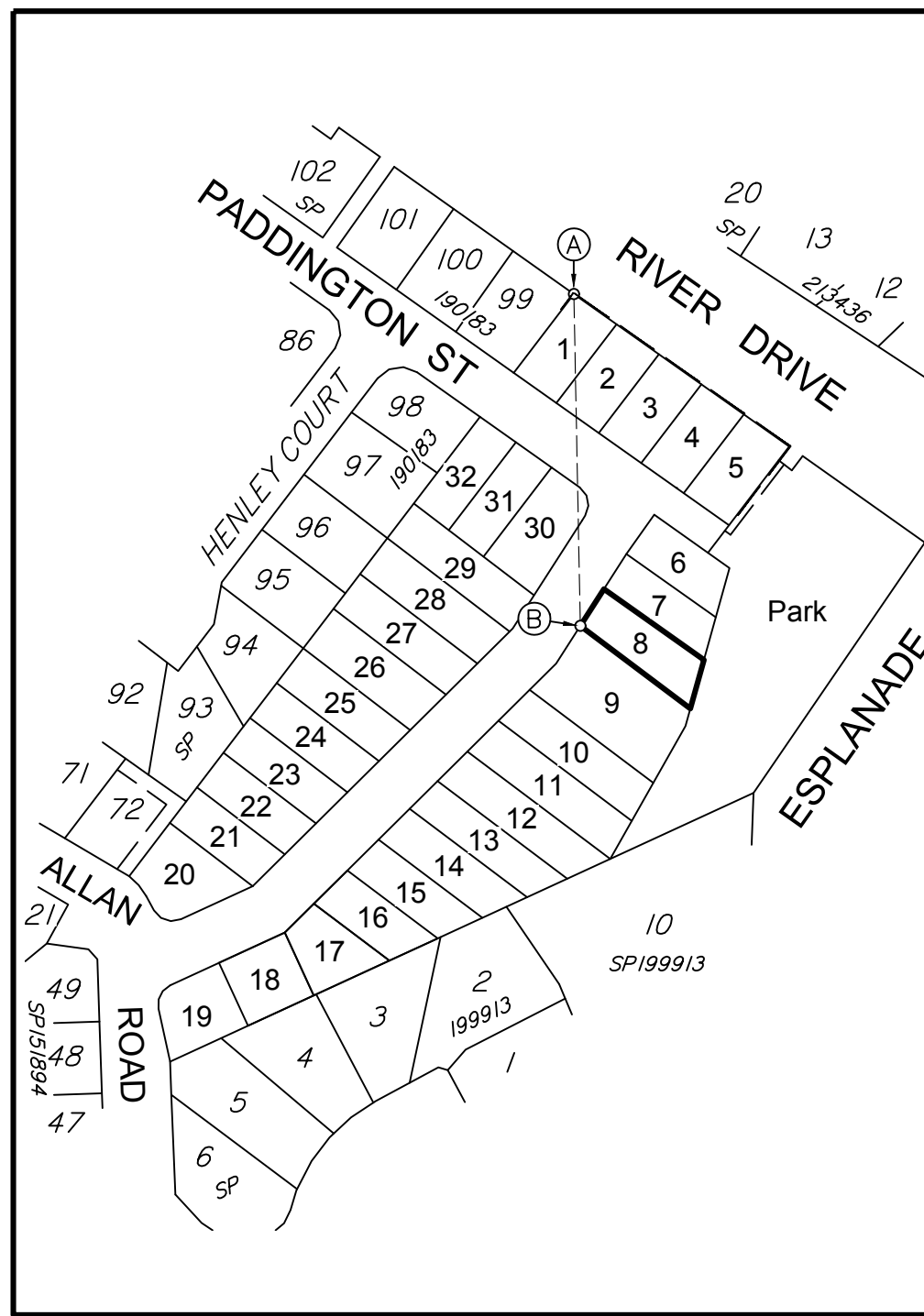
**CADASTRAL CONNECTION**

A - B 178°53'20" 95.756

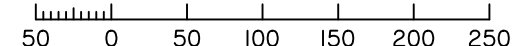
## DISCLOSURE PLAN FOR PROPOSED ALLOTMENT 8 Dated 20th December 2017

This plan shows details of Proposed Allotment 8 on the Subdivision Plan 4891 C-003 Rev G dated 22nd May 2017 which complies with the Development Approval (DA/33913/2017/V3RM dated 12 September 2017, and Operational Works Approval (DA/33913/2017/V4D) dated 5th December 2017, approved by Moreton Bay Regional Council, subject to conditions.

The description of the proposed allotment 8 is as part of Lot 22 on RP137380, and situated at 38 River Drive, Bellmere, commencing at an initial point A being the north eastern most point of Lot 99 on SP190183 and thence bounding off on a bearing of 178°53'20" and a distance of 95.756 to point B at proposed allotment 8, and containing an area of 492 square metres, more or less.



Scale 1:2000 - Lengths are in Metres.



**HARRIDAN Pty Ltd**

### Disclosure Plan

**38 River Drive,  
Bellmere**  
FOR PROPOSED  
ALLOTMENTS 1-32  
Cancelling Lot 22 on RP137380

PROPOSED LOT 8



16.0 NATURAL SURFACE CONTOURS at 0.2m INTERVALS.

+2.0 FILL HEIGHT -2.0 CUT HEIGHT

16.5 FINAL DESIGN CONTOURS at 0.2m INTERVALS.

DETAIL SURVEY COMPLETED BY LSD  
31/01/2017

ENGINEERING DESIGN BY URBAN ENGINEERING SOLUTIONS. PLANS 216017-C SERIES REV G dated 21/2/2018

Revisions	Surveyed	Drawn	Checked	Passed	Date
D Amends	LSD	MH	MH	LS	13/4/18
C Electrical	LSD	MH	MH	LS	27/2/18
B Design updates	LSD	MH	MH	LS	8/2/18
A ORIGINAL PLAN	LSD	MH	MH	LS	20/12/17



PO Box 6334, Maroochydore BC QLD 4558  
10/1 Newspaper Place, Maroochydore QLD 4558  
Mobile: 0412 666 516  
Email: mail@landsurveyingdynamics.com  
Web: www.landsurveyingdynamics.com  
Land Surveying Dynamics (LSD) Pty Ltd  
ACN 154 593 870

Signed   
Cadastral Surveyor/Director

Date \_\_\_\_\_

Map Ref.: 9443-11312

Horiz. Datum MGA Z56

Origin GNSS CORS

Vert. Datum AHD

Origin PSM 146312  
RL 16.135 AHD

Locality: CABOOLTURE

Local Government: MORETON BAY REGIONAL COUNCIL

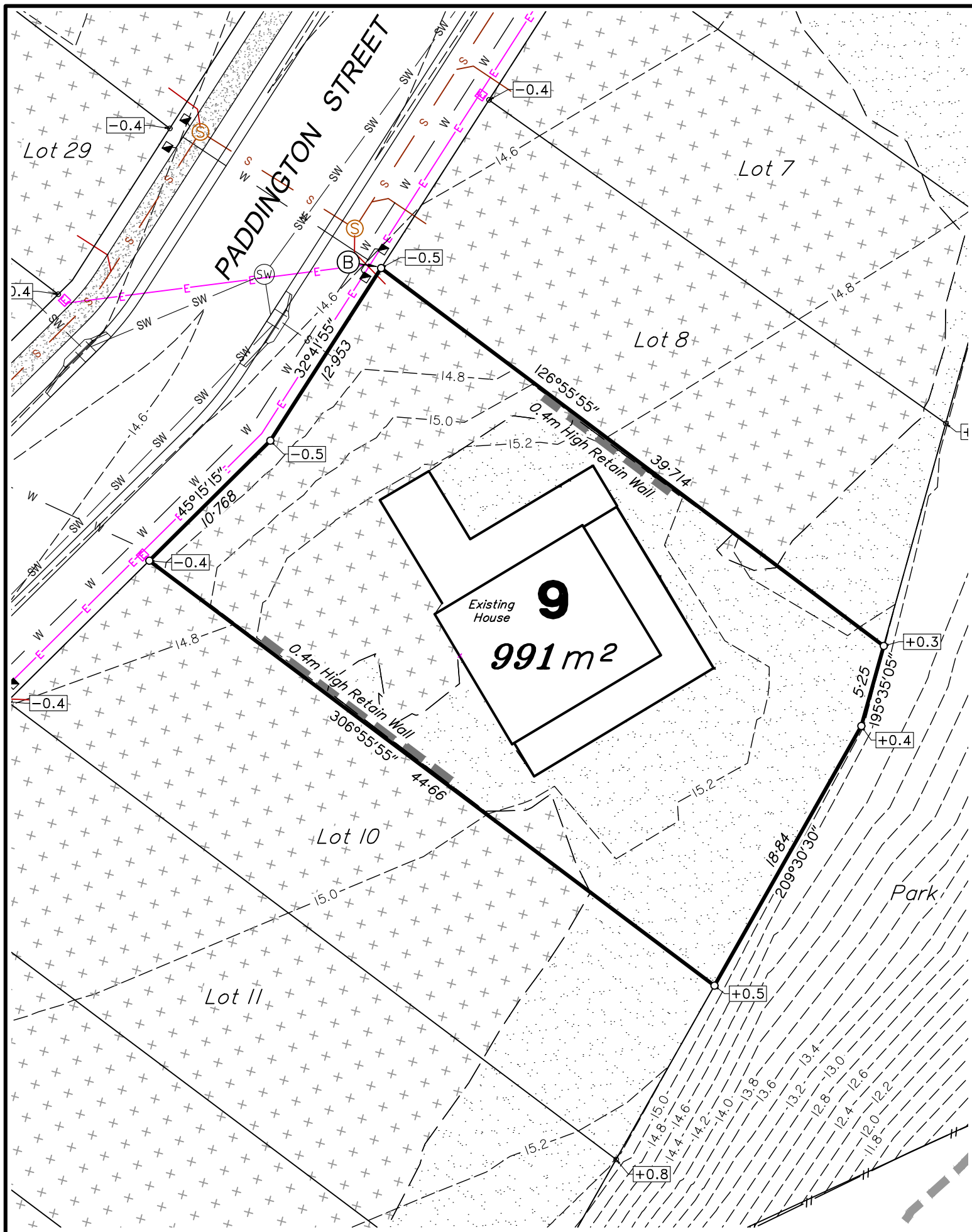
SHEET 1 OF 1 Scale As shown at A3

COMPUTER FILE 12301 DIS-01

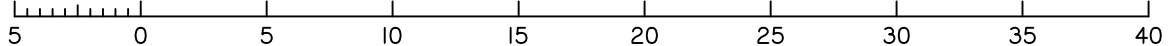
DRAWING NUMBER REV.

**12301-DIS-08 D**

2018/04/17 L: \Jobs\Current\12301 Harridan - Caboolture - Caboolture \Data Survey\Drafting\Proposal\12301 DIS-01.dwg



Scale 1:300 - Lengths are in Metres.



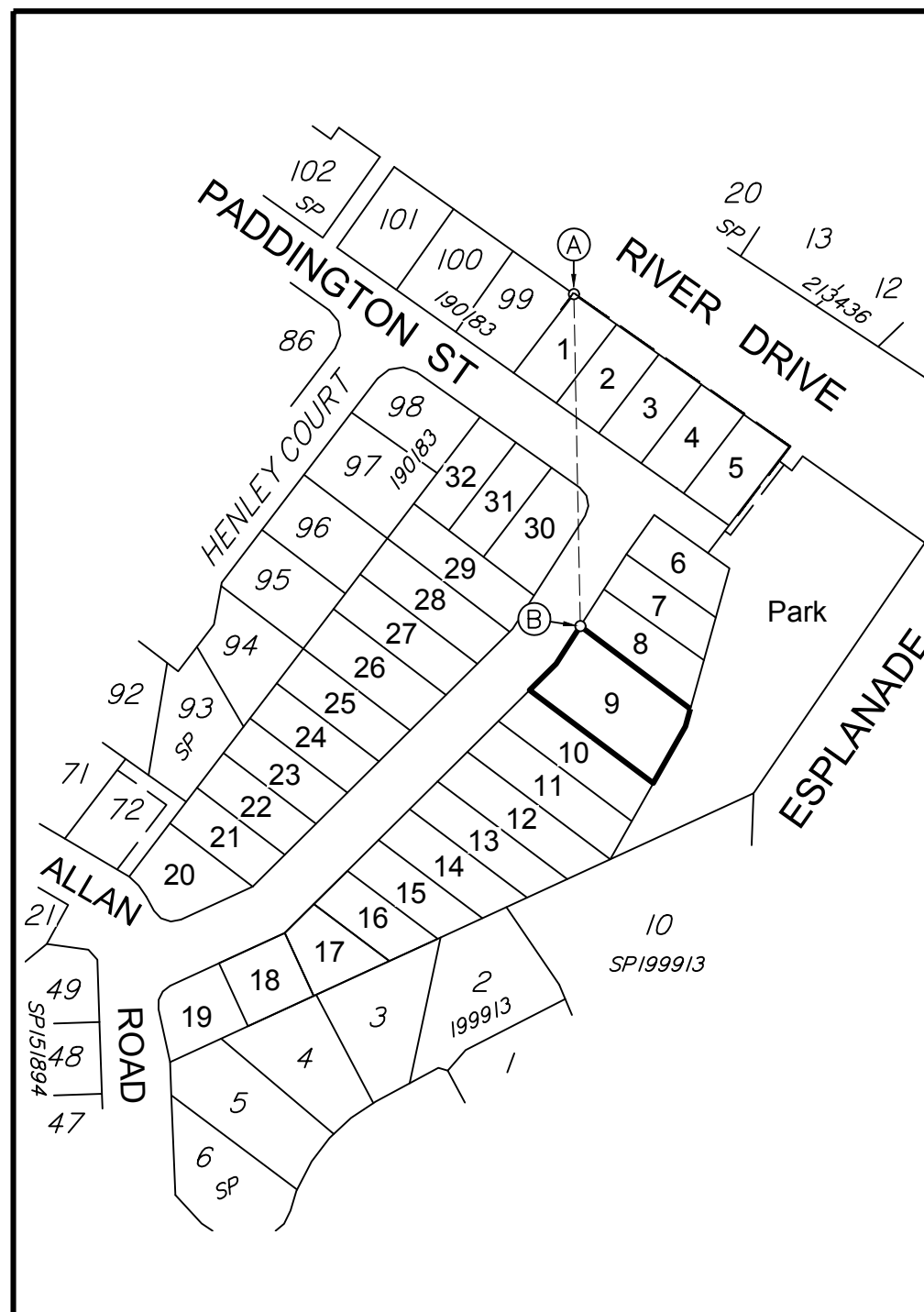
**CADASTRAL CONNECTION**

A - B 178°53'20" 95.756

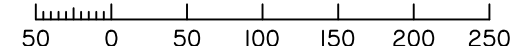
### DISCLOSURE PLAN FOR PROPOSED ALLOTMENT 9 Dated 20th December 2017

This plan shows details of Proposed Allotment 9 on the Subdivision Plan 4891 C-003 Rev G dated 22nd May 2017 which complies with the Development Approval (DA/33913/2017/V3RM dated 12 September 2017, and Operational Works Approval (DA/33913/2017/V4D) dated 5th December 2017, approved by Moreton Bay Regional Council, subject to conditions.

The description of the proposed allotment 9 is as part of Lot 22 on RP137380, and situated at 38 River Drive, Bellmere, commencing at an initial point A being the north eastern most point of Lot 99 on SP190183 and thence bounding off on a bearing of 178°53'20" and a distance of 95.756 to point B at proposed allotment 9, and containing an area of 991 square metres, more or less.



Scale 1:2000 - Lengths are in Metres.

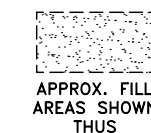


**HARRIDAN Pty Ltd**

### Disclosure Plan

**38 River Drive,  
Bellmere**  
FOR PROPOSED  
ALLOTMENTS 1-32  
Cancelling Lot 22 on RP137380

PROPOSED LOT 9



APPROX. FILL  
AREAS SHOWN  
THUS



APPROX. CUT  
AREAS SHOWN  
THUS

16.0 NATURAL SURFACE CONTOURS  
at 0.2m INTERVALS.

+2.0 FILL HEIGHT -2.0 CUT HEIGHT

16.5 FINAL DESIGN CONTOURS  
at 0.2m INTERVALS.

DETAIL SURVEY COMPLETED BY LSD  
31/01/2017

ENGINEERING DESIGN BY URBAN ENGINEERING  
SOLUTIONS. PLANS 216017-C SERIES REV G  
dated 21/2/2018

Revisions	Surveyed	Drawn	Checked	Passed	Date
D Amends	LSD	MH	MH	LS	13/4/18
C Electrical	LSD	MH	MH	LS	27/2/18
B Design updates	LSD	MH	MH	LS	8/2/18
A ORIGINAL PLAN	LSD	MH	MH	LS	20/12/17



PO Box 6334, Maroochydore BC QLD 4558  
10/1 Newspaper Place, Maroochydore QLD 4558  
Mobile: 0412 666 516  
Email: mail@landsurveyingdynamics.com  
Web: www.landsurveyingdynamics.com  
Land Surveying Dynamics (LSD) Pty Ltd  
ACN 154 593 870

Signed   
Cadastral Surveyor/Director

Date \_\_\_\_\_

Map Ref.: 9443-11312

Horiz. Datum MGA Z56

Origin GNSS CORS

Vert. Datum AHD

Origin PSM 146312  
RL 16.135 AHD

Locality: CABOOLTURE

Local Government: MORETON BAY REGIONAL COUNCIL

SHEET 1 OF 1 Scale  
As shown at A3

COMPUTER FILE 12301 DIS-01

DRAWING NUMBER REV.

**12301-DIS-09 D**

2018/04/17 L: \Jobs\Current\12301 Harridan - Caboolture - Caboolture \Data Survey\Drafting\Proposal\12301 DIS-01.dwg