

# CAMBRIDGE 19

TORQUAY FACADE

\$481,670

 4.0  2.0  2.0



Facade as shown may be altered to suit developer requirements—landscaping is indicative only.

## LOT 878 COTTRELL STREET, MELTON SOUTH EXFORD WATERS ESTATE

HOUSE AREA 175.38m<sup>2</sup>

HOUSE PRICE \$256,670







LAND AREA 469m<sup>2</sup>

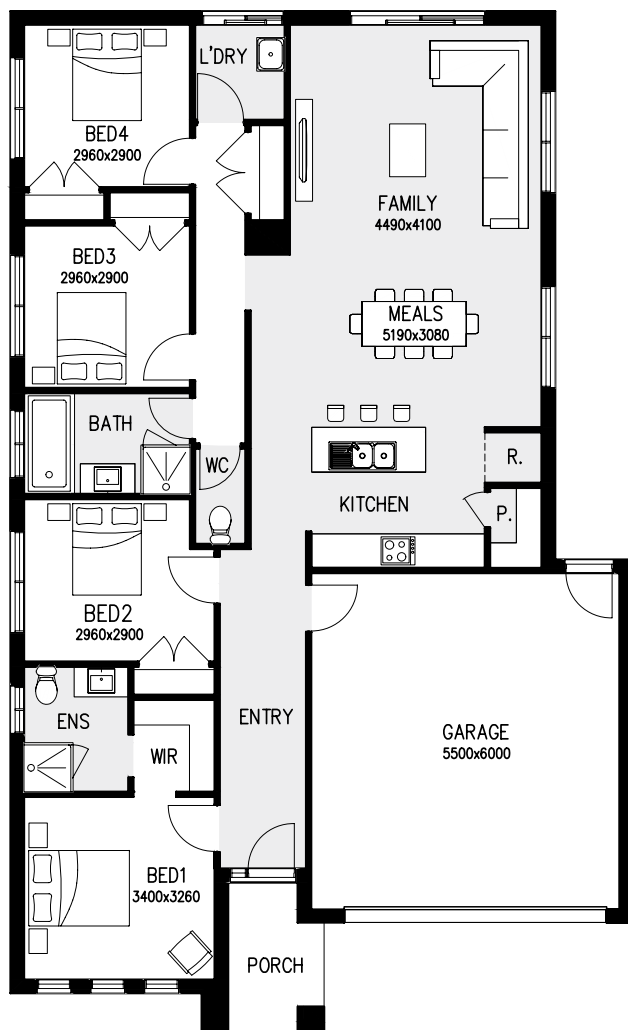
LAND PRICE \$225,000

TITLE RELEASE SEP 2019

TOTAL PRICE \$481,670

### TURNKEY INCLUSIONS

-  Full turnkey package
-  Fixed price (including site costs)
-  Split cycle cooling system to family room
-  Venetians and Holland blinds to all windows
-  Quality carpet and tiled flooring throughout
-  Fully landscaped front and rear gardens, including coloured concrete driveway, path and rear outdoor living area, fences to sides and rear, clothesline and letterbox



NOTE: Minimum lot size may vary depending on the estate design guidelines and building envelopes.  
Floor plan areas may vary slightly in size depending on facade selection. Floor plans shown are not to scale.  
Floor plan may be mirrored to suit garage crossover location.  
Price valid for 3 months from date of issue

**APLACE**  
BY GLENVILL

MELBOURNE  
480 CHURCH STREET,  
CREMORNE VIC 3121  
P (03) 9573 8393

CONTACT  
SALES@APLACE.COM.AU  
APLACEBYGLENVILL.COM.AU