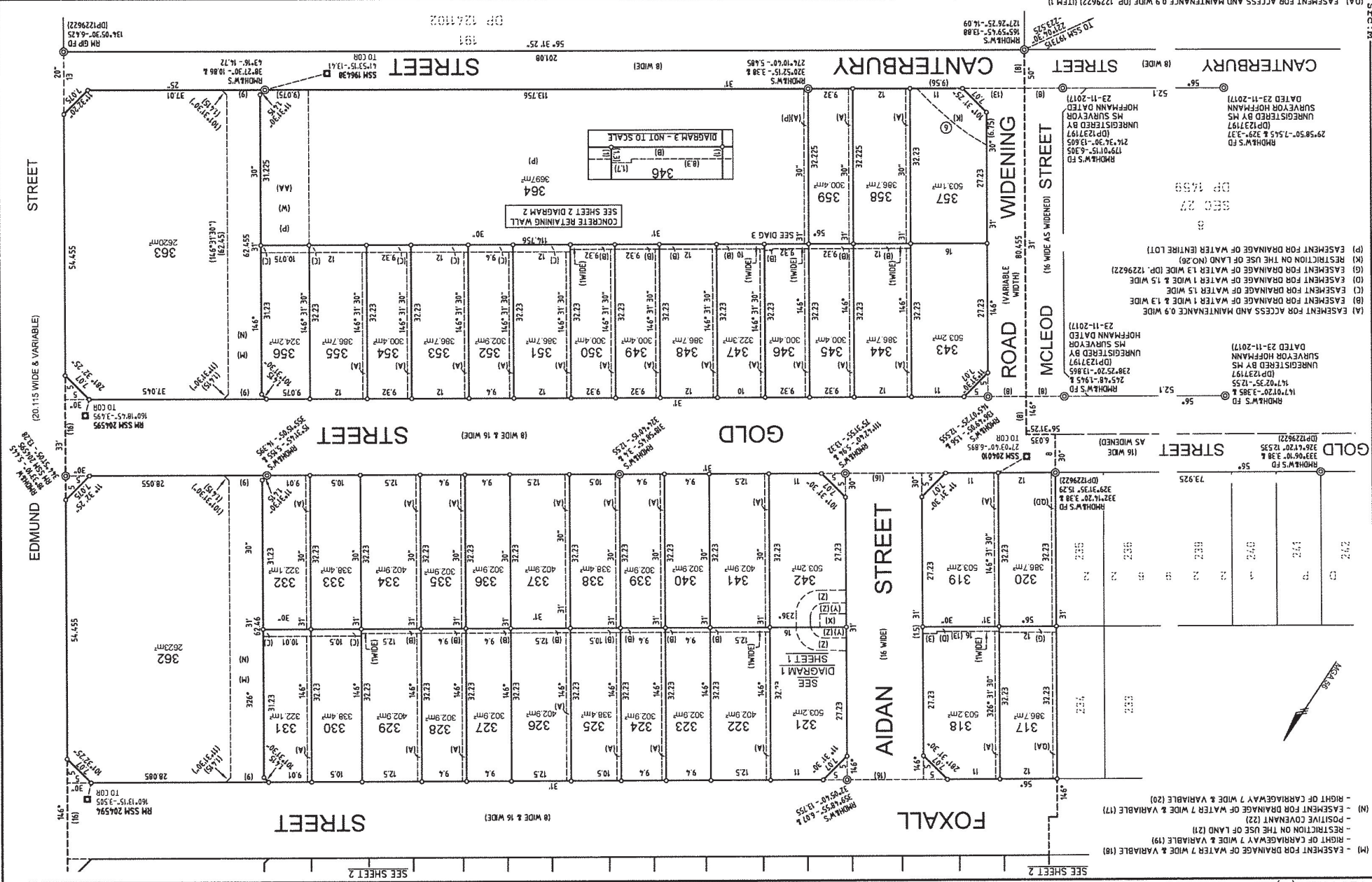


WARNINGS: Crossing or hidding will lead to rejection



- (M) - EASEMENT FOR DRAINAGE OF WATER 7 WIDE & VARIABLE (18)
- (N) - RESTRICTION ON THE USE OF LAND (21)
- (O) - POSITIVE COVENANT (22)
- (P) - EASEMENT FOR DRAINAGE OF WATER 7 WIDE & VARIABLE (17)
- (Q) - RIGHT OF CARRIAGEWAY 7 WIDE & VARIABLE (20)

- (A) - EASEMENT FOR ACCESS AND MAINTENANCE 0.9 WIDE
- (B) - EASEMENT FOR DRAINAGE OF WATER 1.3 WIDE
- (C) - EASEMENT FOR DRAINAGE OF WATER 1.5 WIDE
- (D) - EASEMENT FOR DRAINAGE OF WATER 1 WIDE & 1.5 WIDE
- (E) - EASEMENT FOR DRAINAGE OF WATER 1.3 WIDE (DP: 1229622)
- (F) - RESTRICTION ON THE USE OF LAND (NO.28)
- (G) - EASEMENT FOR DRAINAGE OF WATER (ENTIRE LOT)
- (H) - EASEMENT FOR ACCESS AND MAINTENANCE 0.9 WIDE (DP: 1229622) (ITEM 1)
- (I) - EASEMENT FOR ACCESS AND MAINTENANCE 0.9 WIDE (DP: 1229622) (ITEM 2)
- (J) - DEFERRED BY RIGHT OF CARRIAGEWAY 7 WIDE & VARIABLE (ITEM 2)
- (K) - POSITIVE COVENANT (ITEM 25)
- (L) - EASEMENT FOR PAVEMENT SUBSTITUTION 2.75 WIDE
- (M) - RESTRICTION ON THE USE OF LAND (NO.6)
- (N) - RESTRICTION ON THE USE OF LAND (NO.7)

SURVEYOR  
Name: SANDRA MARIE HOFFMANN  
Date: 02.03.2018  
Reference: SW.P12331.DP5.51G3

PLAN OF SUBDIVISION OF LOT 254 DP1229622  
LGA: BLACKTOWN  
Locality: RIVERSTONE  
Reduction Ratio 1: 500  
REGISTERED  
30.08.2018

DP1229623