

LOT 3021

\$702,000

Floribunda Parade, Marsden Park

TURN KEY

LAND PRICE
\$415,000

HOUSE PRICE
\$287,000

SPECIAL DESIGN 150, Modern Facade

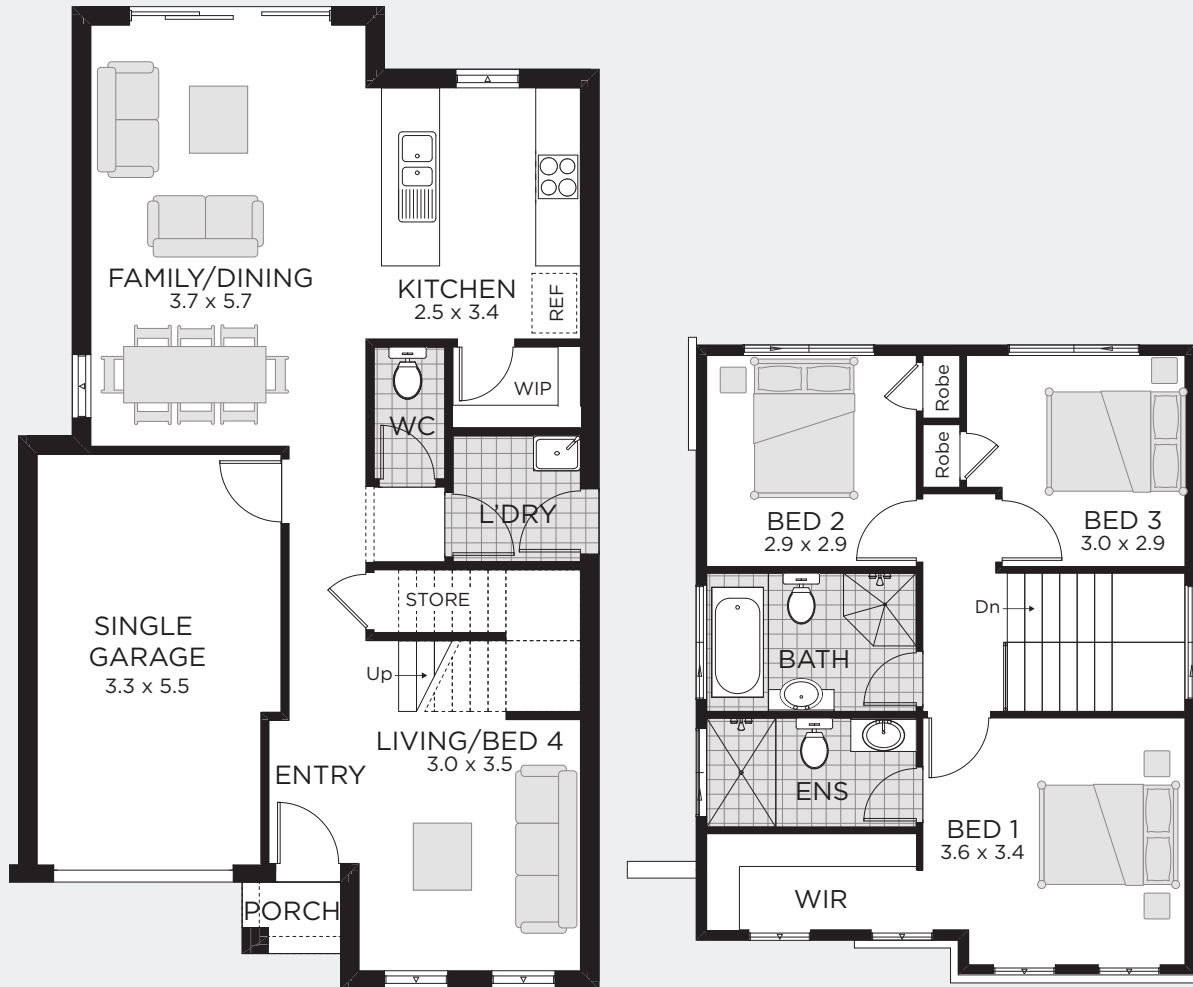
343m²
Approx.
Land Size

BED	3	Sq	16
BATH	2.5	Sqm	150
CARS	1	Width	7.79m
		Depth	13.19m



Inclusions

- Standard Site costs and BASIX
- Council Development Application fees
- Plain Concrete driveway
- Quality floor tiles to entry hallway, kitchen, family and dining
- Quality carpet to balance of house
- Tiles to entry porch
- Gas pack
- Insulation to walls and ceiling
- Caesarstone kitchen benchtop
- Air conditioning
- Boundary Fencing
- Landscaping



All drawings, images and photographs are for illustrative purposes only and should be used as a visual guide only. We reserves the right to revise plans, specifications and prices without notice or obligation. Note this plan is indicative only and may be amended at any time to suit site conditions and/or estate conditions/requirements. Site costs based on maximum 500mm fall over block with even cut & fill and "m or h slab" classification. Retaining walls are not included. 21/03/2019