

HOUSE & LAND PACKAGE

**\$901,400**



## Lot 19 The Ponds Estate, THE PONDS



**Lot Size** 392.81m<sup>2</sup>

### Location & Lifestyle

The Ponds has proved itself as a landmark lifestyle target within Sydney's increasingly coveted North West Growth Corridor. An ideal spot for growing families, Schofields offers an exciting range of quality schools, as well as enviable preschool and childcare options.

### Home Design

#### Grace 21 Majestic Facade

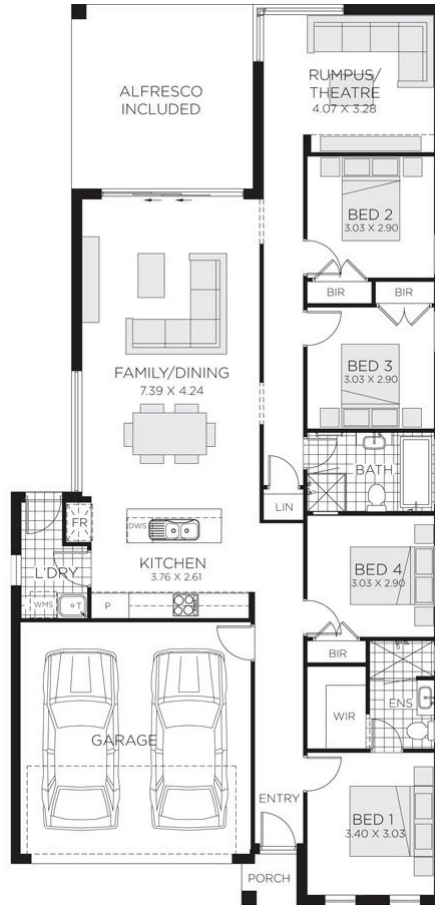
The newest home to the Rawson family, the Grace offers contemporary style, with plenty of open plan space to entertain and spend quality time with family.

### Fixed Price Package Inclusions

- Fixed price sites costs
- 20mm Caesarstone benchtop to kitchen
- 14 KW Daikin ducted air conditioning with two zones
- Westinghouse stainless steel appliances
- Timber laminate flooring to living, dining, kitchen and entry hallway; carpets to remainder
- Floor tiling to alfresco & patio
- B&D Colorbond panelift door with remote control operation
- BASIX requirements including rainwater tank
- Driveway and front path

For further information,  
please contact **Melina Sormi** on **0416 060 659** or  
email [melina.sormi@rawson.com.au](mailto:melina.sormi@rawson.com.au)





This site plan is for illustrative purposes only – not to scale.

## Lot 19 The Ponds Estate, THE PONDS

**Lot size 392.81m<sup>2</sup>**

<b>Ground Floor</b>	146.52m <sup>2</sup>	<b>Porch</b>	1.54m <sup>2</sup>
<b>First Floor</b>	0.0m <sup>2</sup>	<b>Alfresco</b>	19.0m <sup>2</sup>
<b>Garage</b>	33.02m <sup>2</sup>	<b>Total</b>	200.08m <sup>2</sup> /21.54Squares

Disclaimer: Fixed for all lots with up to 1m fall across the site. Real Price Packages are subject to availability, developers design review panel, bushfire requirements & statutory approval. One Real Price to be determined upon tender requests for individual lots and may vary due to site conditions and statutory authority requirements. Whilst every effort is made to provide accurate information images are for illustrative purposes and intended to provide a visual guide only. Refer to individual contracts for final details. Details are correct at time of printing and subject to change without notice or obligation. Printed 21/02/2019

Builders Lic No. NSW 33493C. ACT 19936252B. ABN 67 053 733 841.

*this is Real Living*

[rawsonhomes.com.au](http://rawsonhomes.com.au)