



HOUSE & LAND PACKAGE

\$685,200



Lot 36 Austral, AUSTRAL



4



2.5



2

Lot Size 382.6m²

Location & Lifestyle

Discover a vibrant community at the heart of Sydney's South West growth corridor. This well-connected neighbourhood is the ideal place to discover a greener outlook and a brand new perspective. With the new Leppington Station already open, significant infrastructure planned for the coming years will see the local area benefit from a major civic centre, expansive parks and recreation areas, a range of new schools, health centres and the development of commercial and residential land. Set within the lush, green neighbourhood, Austral holds the vision of a dynamic urban future.

Home Design

Benham 21 Classic Facade

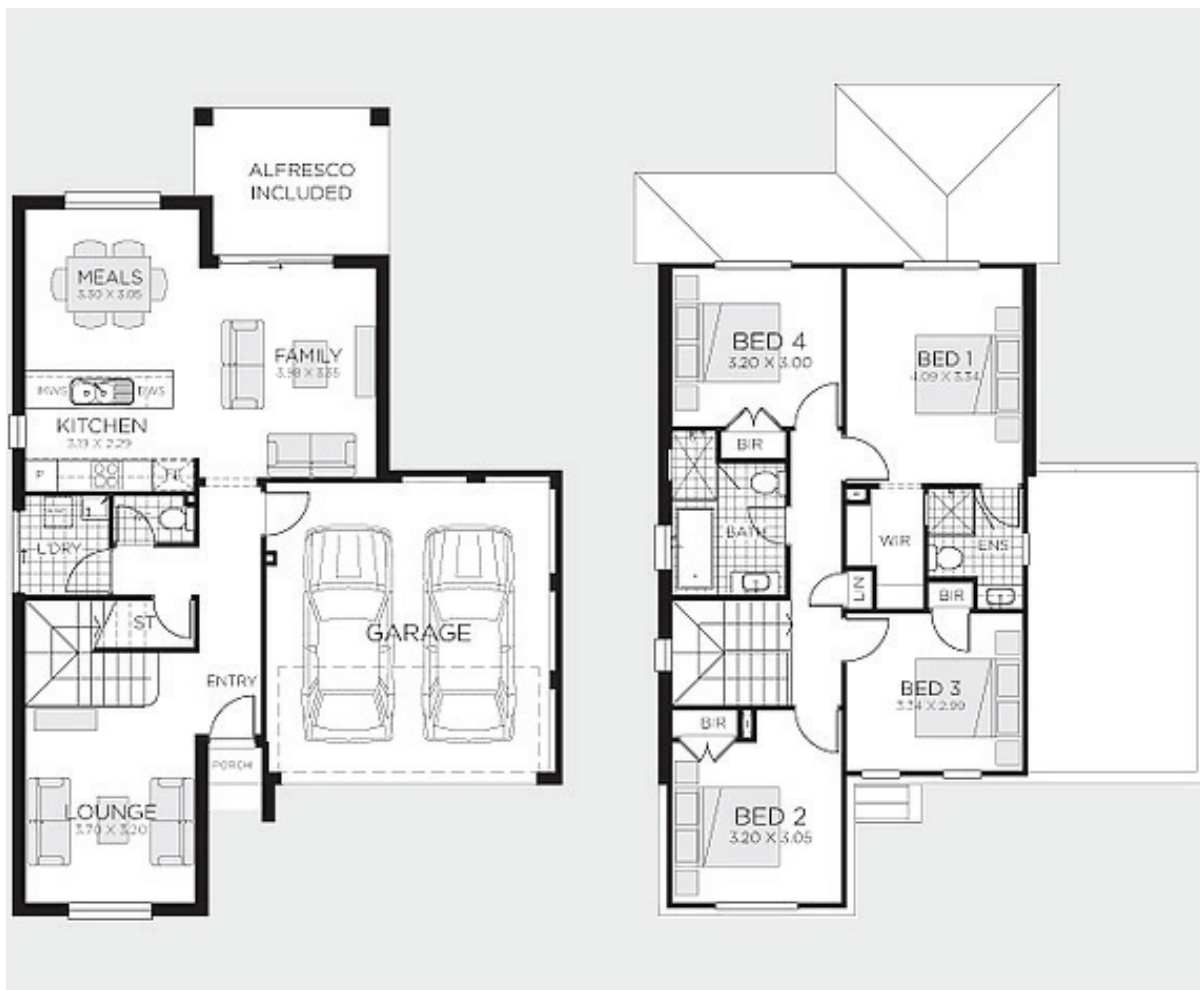
The Benham combines sublime contours and architectural lines into a fusion that is worthy of celebration. At first glance this home will intrigue and delight as it reveals its dominant open living areas and spacious bedrooms ready for seclusion or fun filled entertaining.

Fixed Price Package Inclusions

- Fixed price sites costs
- 20mm Caesarstone benchtop to kitchen
- 14 KW Daikin ducted air conditioning with two zones
- Westinghouse stainless steel appliances
- Timber laminate flooring to living, dining, kitchen and entry hallway; carpets to remainder
- Floor tiling to alfresco & patio
- B&D Colorbond panelift door with remote control operation
- BASIX requirements including rainwater tank
- Driveway and front path

For further information,
please contact **Melina Sormi** on **0416 060 659** or
email **melina.sormi@rawson.com.au**





This site plan is for illustrative purposes only – not to scale.

Lot 36 Austral, AUSTRAL

Lot size 382.6m²

Ground Floor	71.23m²	Porch	0.71m²
First Floor	79.06m²	Alfresco	9.96m²
Garage	32.9m²	Total	193.92m² / 20.87Squares

Disclaimer: Fixed for all lots with up to 1m fall across the site. Real Price Packages are subject to availability, developers design review panel, bushfire requirements & statutory approval. One Real Price to be determined upon tender requests for individual lots and may vary due to site conditions and statutory authority requirements. Whilst every effort is made to provide accurate information images are for illustrative purposes and intended to provide a visual guide only. Refer to individual contracts for final details. Details are correct at time of printing and subject to change without notice or obligation. Printed 03/11/2018

Builders Lic No. NSW 33493C, ACT 19936252B, ABN 67 053 733 841.

this is Real Living

rawsonhomes.com.au