

ADDISON

Tenant Ready Collection

TenantReady 

 4 |  2 |  2 |  2 | 



ADDISON

Tenant Ready Collection

TenantReady 

 4 |  2 |  2 |  2 | 

Areas

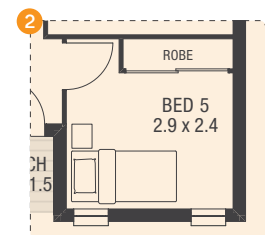
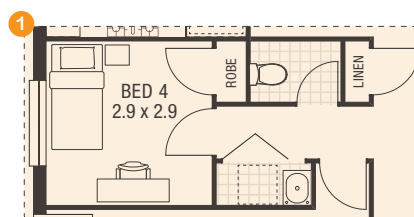
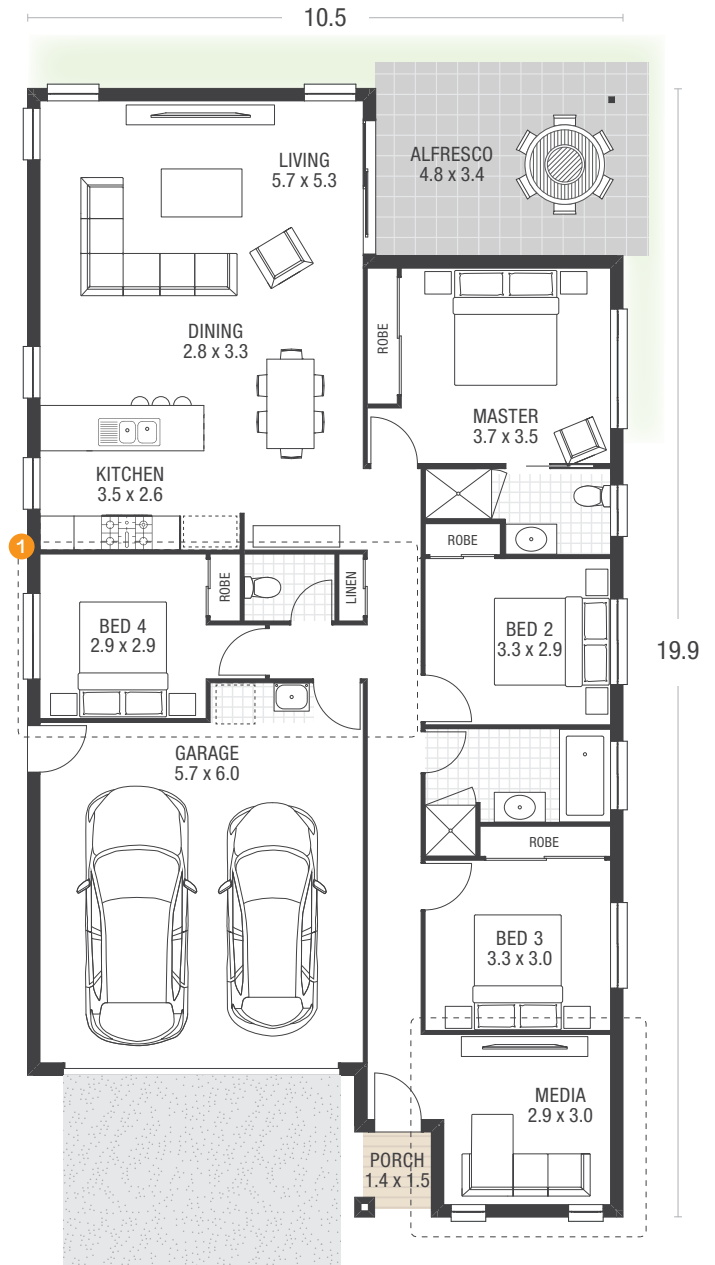
Ground Floor	15.5sq	143.6m ²
Garage	3.9sq	36.1m ²
Outdoor Living	1.7sq	16.4m ²
Porch	0.2sq	2.0m ²
Total Area	21.3sq	198.0m²
Home Length	19.9m	
Home Width	10.5m	

Design Features

A streamlined design featuring 4 bedrooms, 2 bathrooms, a media room and a double car garage the Nixon offers comfortability for the large family. The open living and dining area leads out onto a spacious alfresco perfect for entertaining.

Home Option

- 1 Laundry relocation, size and door change to linen and bed 2 robe and reposition of bed 2 door.



16.0+
14.0
12.5
10.0

MINIMUM
LOT WIDTH

Facades are for illustrative purposes and may contain minor finishes not included as standard on all facades, such as window furnishings and feature lighting. Plants and landscaping may vary from illustration. Alfresco area is defined as the cumulative usable external slab area under roofline. Living area count include Living, Media or Rumpus rooms. Accordingly, any prices do not include the supply of these items. Updated 20/04/2018. Version 8.0.