

# House and land package.



**House and land package \$506,936\***

(Fixed price held to 30<sup>th</sup> Sept 2019)

**Address: Lot 1 Serene Terrace, Drysdale**

Inclusions:

- + Executive Facade
- + Double Glazed Windows & Sliding Door with Fly Screens
- + 900mm S/S Appliances & Dishwasher
- + Carpet & Tiles throughout
- + Landscaping, fences and window coverings.
- + 25500mm, 8'6 High Ceilings & Gas Ducted Heating
- + Exposed Aggregate Concrete Driveway & Fixed Site Costs

**Stonehaven 153 - Executive.**

 3  2  1

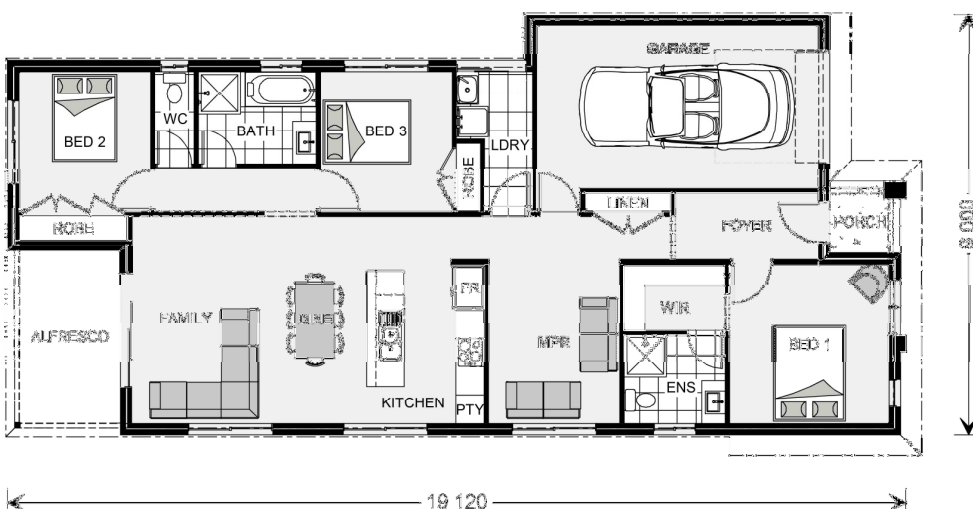
**Give us a call or drop in for a chat today.**

Office:

Call: .

Email: .

Or visit [gjgardner.com.au](http://gjgardner.com.au)



\*Images and photographs may depict fixtures, finishes and features either not supplied by G.J. Gardner Homes or not included in any price stated. These items include furniture, swimming pools, pool decks, fences, landscaping - including planter boxes, retaining walls, water features, pergolas, screens and decorative landscaping items such as fencing and outdoor kitchens and barbeques. For detailed home pricing, please talk to a new homes consultant.

Welcome **home.**

**G.J. Gardner. HOMES**