



HOUSE & LAND PACKAGE

\$814,000



Lot 5379 Elara Estate, MARSDEN PARK



Lot Size 395.5m²

Location & Lifestyle

Just minutes from the booming Marsden Park precinct, Elara is a true suburb of the future with concrete plans in place for a community centre, primary and secondary schools, a retail centre and playing fields. This is all in addition to existing infrastructure that makes this north-west region of Sydney so popular with families. Excellent transport options means a relaxing weekend in the Blue Mountains or an exciting night out in the city are all just a short drive away.

Home Design

Kingston 24 Trend DG Facade

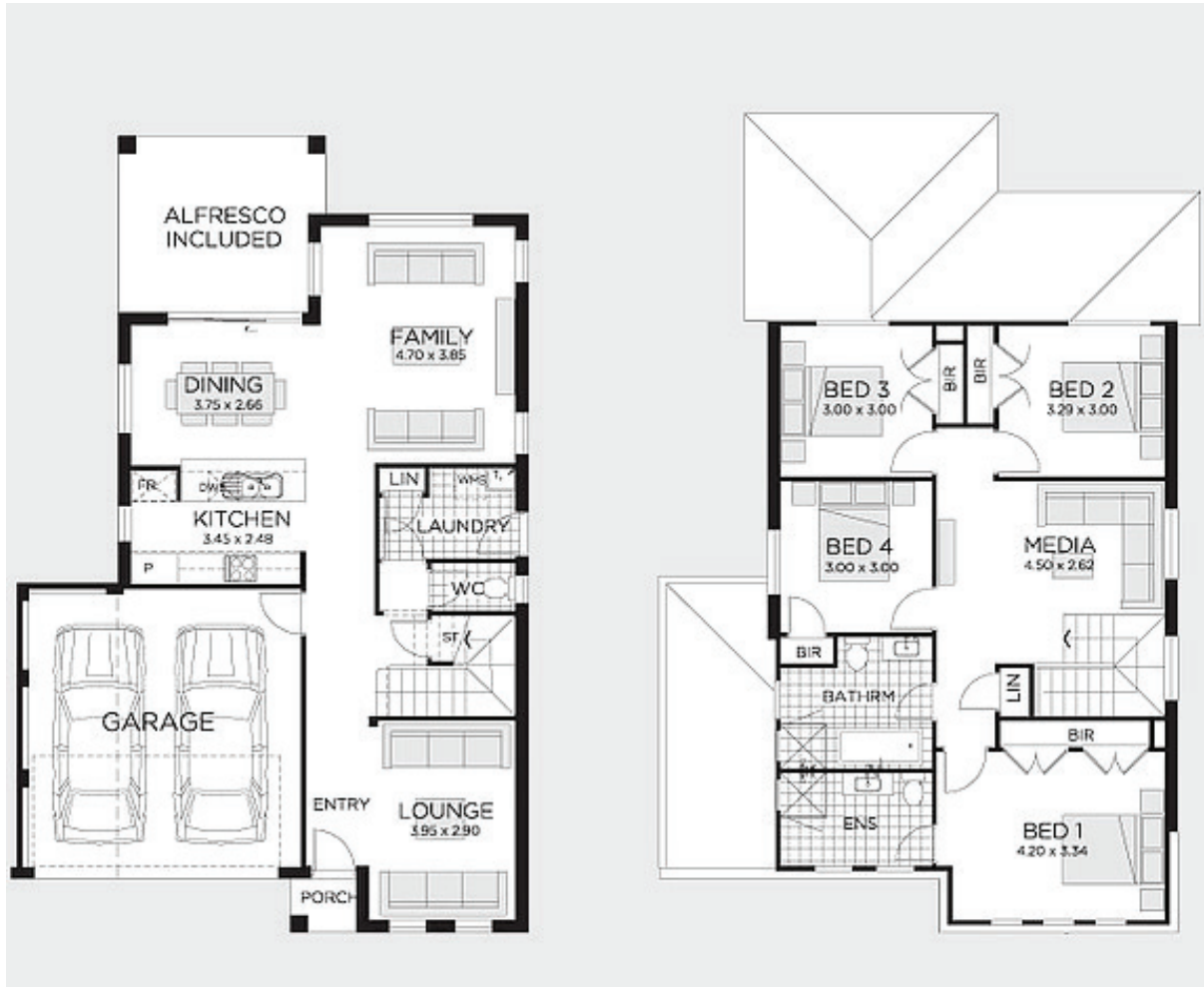
Zoning becomes ever important, especially when you're searching for a home of generous proportions and perfect everyday flow. King in proportions this design will deliver everything you need and want.

Fixed Price Package Inclusions

- Fixed price sites costs
- 20mm Caesarstone benchtop to kitchen
- 14 KW Daikin ducted air conditioning with two zones
- Westinghouse stainless steel appliances
- Timber laminate flooring to living, dining, kitchen and entry hallway; carpets to remainder
- Floor tiling to alfresco & patio
- B&D Colorbond panelift door with remote control operation
- BASIX requirements including rainwater tank
- Driveway and front path

For further information,
please contact **Melina Sormi** on **0416 060 659** or
email melina.sormi@rawson.com.au





This site plan is for illustrative purposes only – not to scale.

Lot 5379 Elara Estate, MARSDEN PARK

Lot size 395.5m²

Ground Floor	82.37m ²	Porch	1.4m ²
First Floor	93.81m ²	Alfresco	13.66m ²
Garage	32.46m ²	Total	223.7m ² / 24.08Squares

Disclaimer: Fixed for all lots with up to 1m fall across the site. Real Price Packages are subject to availability, developers design review panel, bushfire requirements & statutory approval. One Real Price to be determined upon tender requests for individual lots and may vary due to site conditions and statutory authority requirements. Whilst every effort is made to provide accurate information images are for illustrative purposes and intended to provide a visual guide only. Refer to individual contracts for final details. Details are correct at time of printing and subject to change without notice or obligation. Printed 06/10/2018

Builders Lic No. NSW 33493C. ACT 19936252B. ABN 67 053 733 841.

this is Real Living

rawsonhomes.com.au