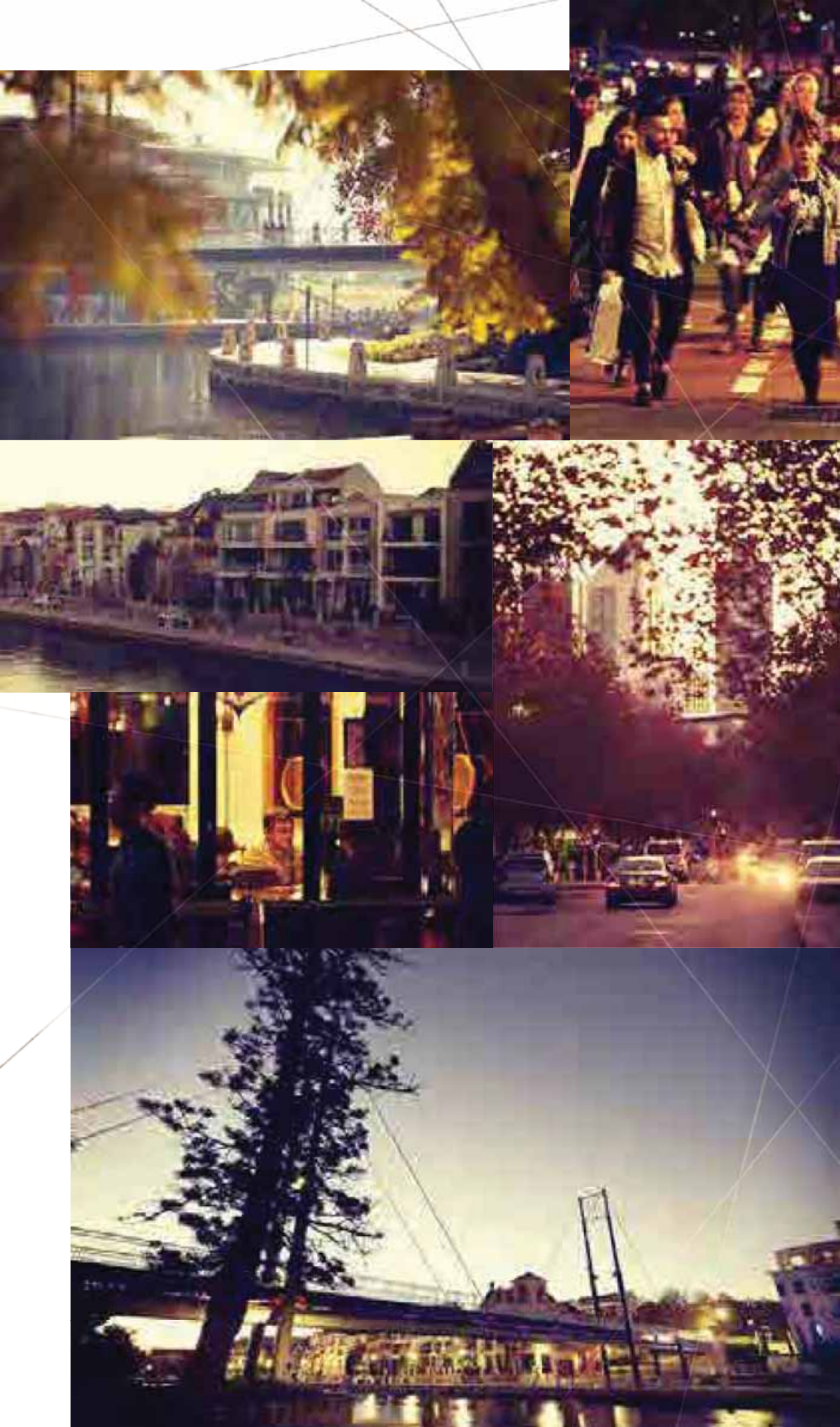


ENCLAVE

EAST PERTH

PARK | RIVER | CITY



A PRIVATE RETREAT ON EXCITEMENT'S EDGE.

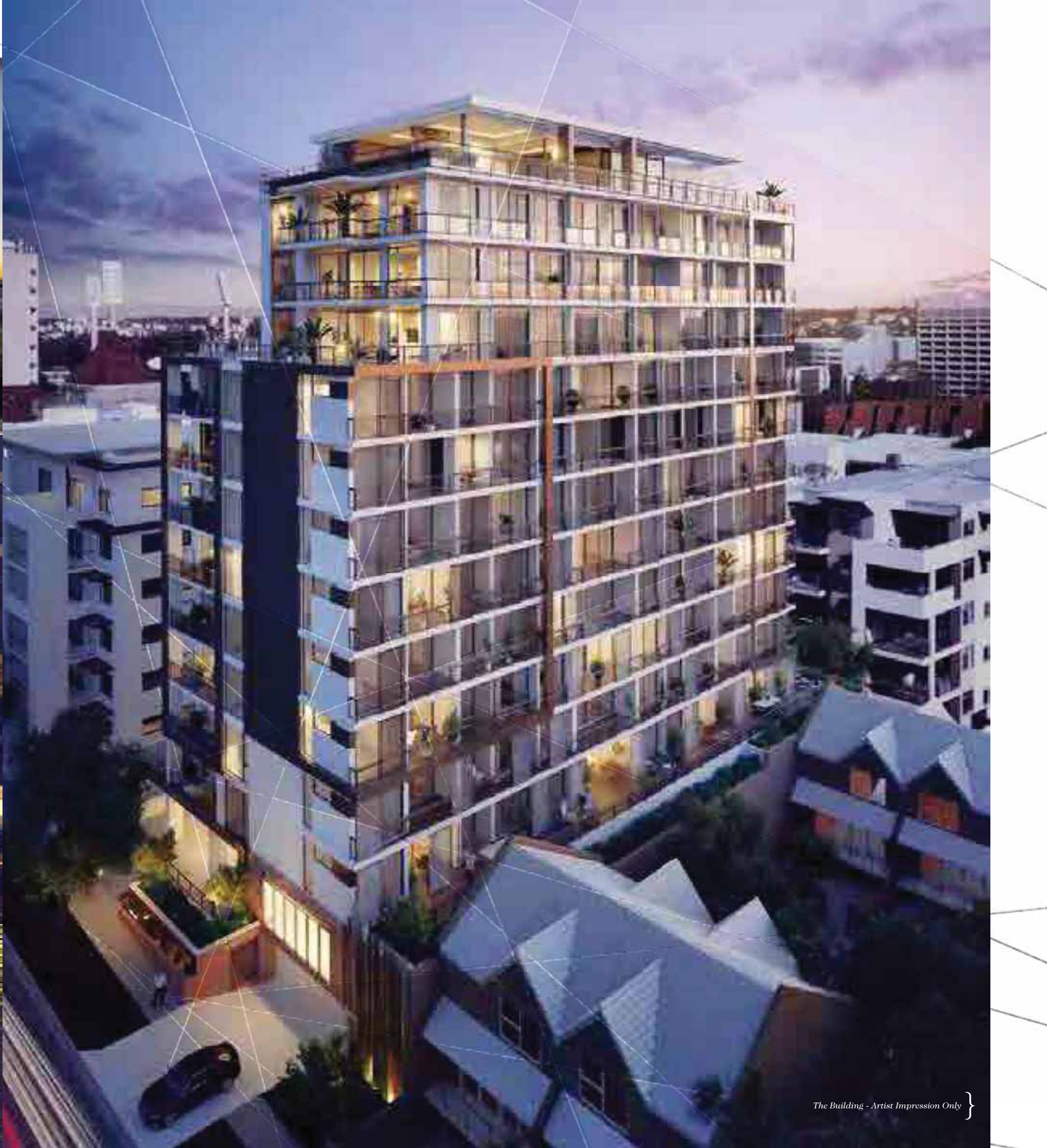
Who knows where the day will take you, starting with a lazy breakfast in Claisebrook Cove, followed by an afternoon at one of the many new riverfront entertainment precincts.

The options are endless.

Welcome to Enclave. A private retreat which meets all your lifestyle wishes.

Enclave introduces a new era in stylish apartment living. Where you can be close to the amenities and conveniences you want, and live amongst the everyday comforts you need.

Enclave is the ultimate location. Its magnificent city views are matched with the best in modern apartment design and luxury living. It's everything you could imagine and more.



The Building - Artist Impression Only }



ENCLAVE
EAST PERTH

500m

1km

1.5km

- 1
- 2
- 3
- 4
- 5
- 6
- 7
- 8
- 9
- 10
- 11
- 12
- 13
- 14
- 15
- 16
- 17
- 18
- 19
- 20



PIECE OF THE ACTION, OR PEACE AND QUIET.

1. Point Fraser and Ku De Ta
2. Causeway
3. Future Waterbank Development
4. Elizabeth Quay
5. Queen's Gardens
6. Trinity College
7. WACA
8. Crown Perth
9. Perth CBD
10. Mercedes College
11. Gloucester Park
12. Crown Towers
13. Royal Perth Hospital
14. Wellington Square
15. Perth Arena
16. Central Institute of Technology
17. Claisebrook Cove
18. Future Footbridge
19. Northbridge
20. Claisebrook Train Station
21. NIB Stadium
22. Perth Stadium
23. Graham Farmer Freeway

At Enclave, the city's ever-evolving array of enticing new bars, restaurants, theatres and cultural experiences are within easy walking distance.

Northbridge, Perth's traditional cultural and nightlife hub, is also within easy reach.

If you enjoy your AFL and other sports, you'll have access to the stunning new footbridge which links East Perth with the new stadium at Burswood and the Crown Entertainment Complex.

Also nearby are the famous WACA Cricket Ground, Gloucester Park

Raceway, Royal Perth Hospital and the Perth Arena.

When you need to relax, you're close to the stunning Swan River and foreshore which offer a wide range of social, cultural and recreational opportunities.

Enclave is conveniently positioned in Perth's free transit zone making it easy to jump on a CAT or Transperth bus to the CBD, West Perth and Northbridge. So you can leave the car at home and save a fortune in cab fares too.

Perfect if you work in the city.

ALL YOU NEED, RIGHT ON YOUR DOORSTEP.

A quiet dinner for two on your private balcony, or cocktails with friends in the rooftop lounge?

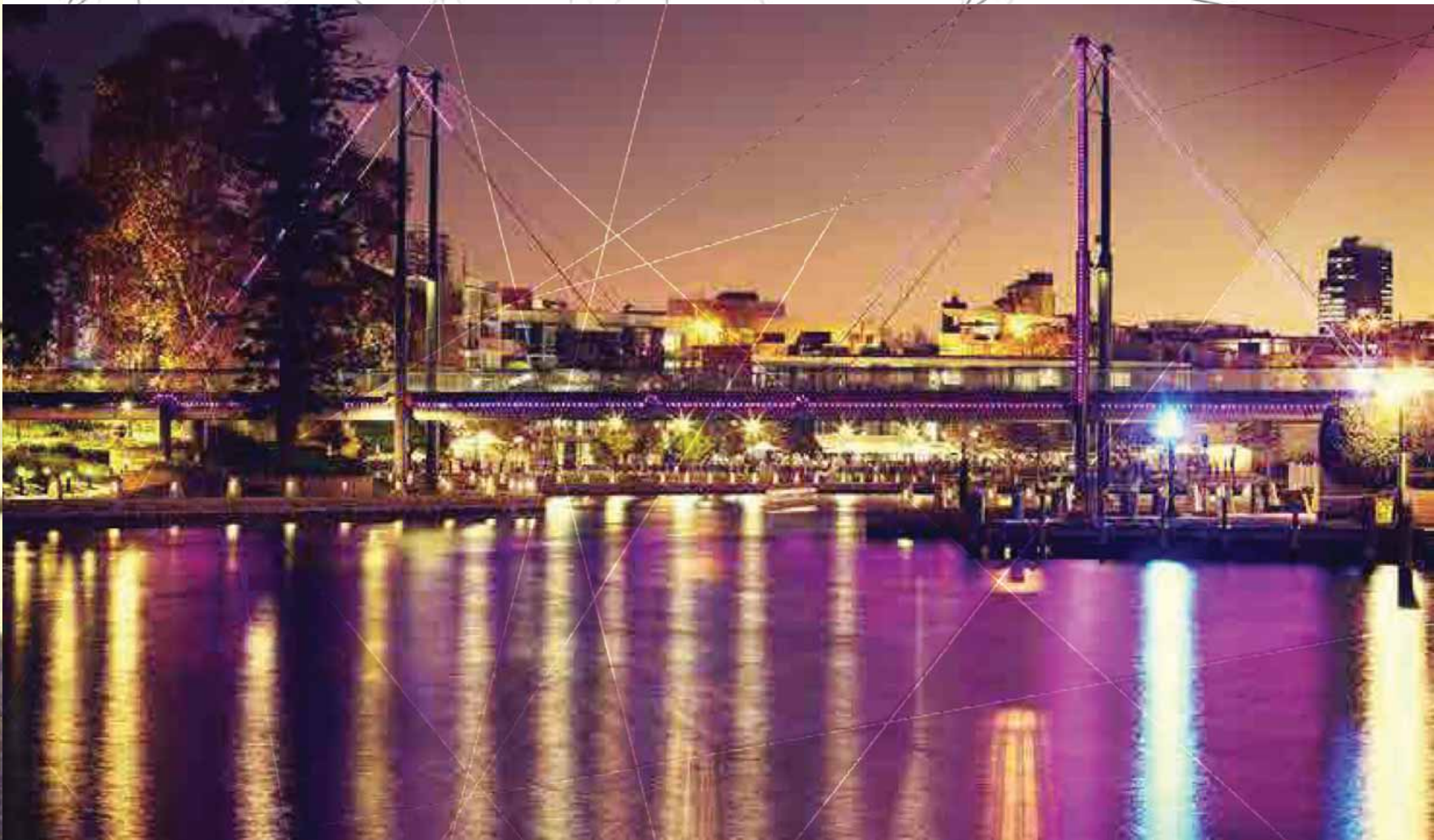
Or maybe it's time to hit the town?

Whatever you're in the mood for, it's all at your fingertips at Enclave.

Heading out is easy when you're so close to the city and entertaining at home is even easier, especially when the options are as luxurious as this.

Because when you're at home, Enclave offers a selection of world-class facilities which highlight the advantages of contemporary apartment living.







{ Building Roof Entertainment Area - Artist Impression Only



LET'S GET TOGETHER.

Head to the open-deck rooftop lounge and alfresco dining area where you can just sit back and take in the view, watch your favourite TV show, or even cook up a feast at the undercover barbecue.

The expansive deck, complete with lush landscaping, feature architecture and subtle lighting, brings an instant sense of calm and belonging.

And if you love unwinding on an exercise bike or keeping yourself in shape, the gym is the perfect extension of the rooftop experience.

It's fully equipped with an open, friendly aesthetic designed to create the comfortable environment you need to enjoy your exercise. It also has great views over the city.



YOUR OWN SLICE OF LUXURY.

The grandeur of your exterior view is perfectly matched with a stunning interior aesthetic, evident in every element of design.

A view this good deserves to be beautifully framed and enjoyed in absolute comfort. Floor to ceiling windows will show off your surrounds and let you control the abundant natural light.

The innovative, practical layout ensures your cooking and dining experiences are seamless, even when extended onto the balcony.

Plus, the meticulously streamlined bathroom offers yet another level of indulgence.





Apartment Living - Artist Impression Only }





Apartment Bathroom - Artist Impression Only

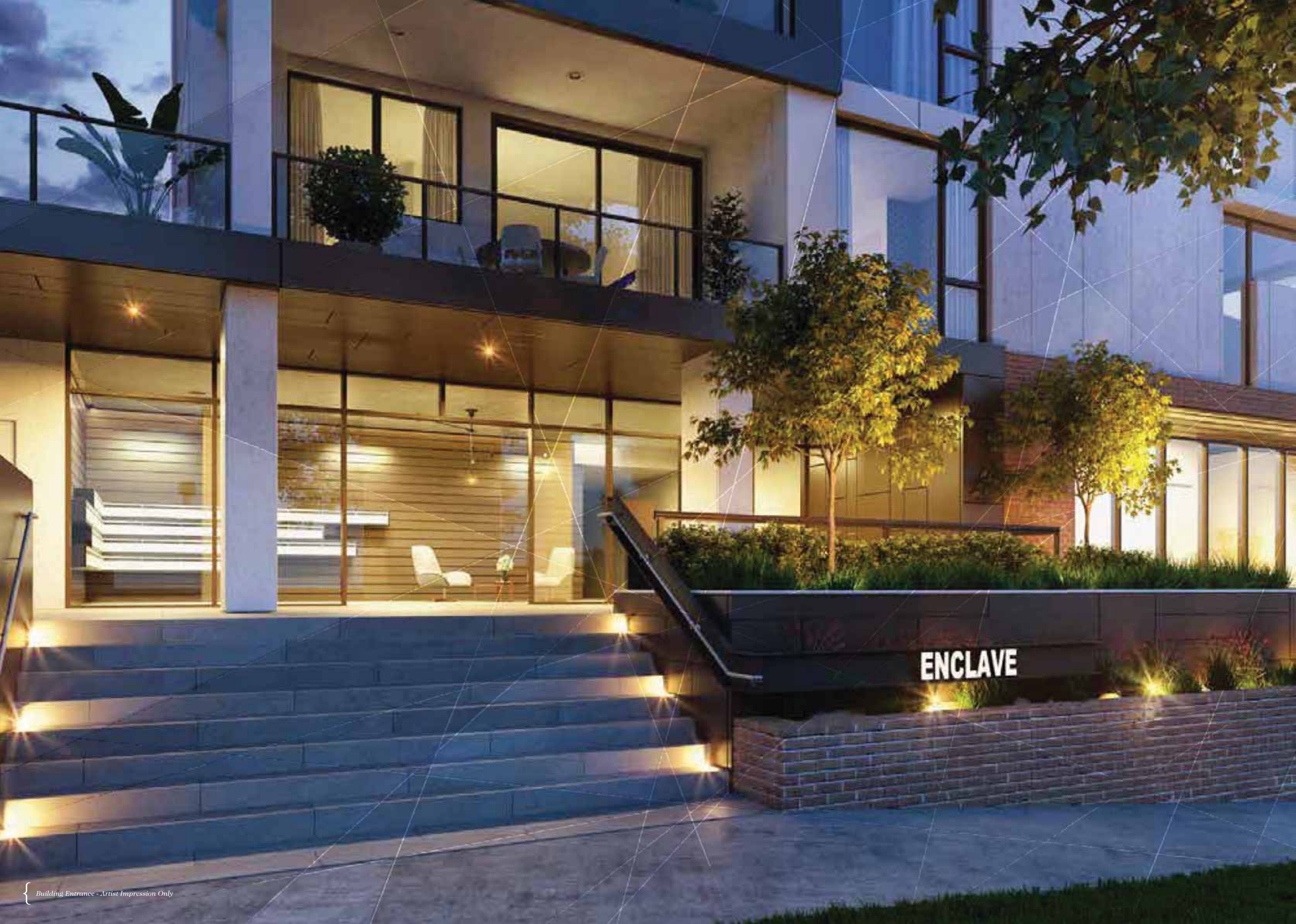


Apartment Living - Artist Impression Only

APPETITE FOR PERFECTION.

Whether you love creating magnificent meals, or simply enjoy your morning coffee routine, your kitchen should be a haven of comfort with everything you need at your fingertips.

An extension of the luxurious apartment design, your kitchen comes complete with the highest-quality stainless steel appliances, glass splashbacks and stone benchtops.



ENCLAVE

AWARD WINNING DEVELOPER.

Since inception in 2003, Blackburne, has had a passion for property.

It's at the heart of everything we do.

Over many years it has been a catalyst for the business to forge together a remarkable team of progressive property thinkers.

As an integrated property developer, our powerful combination of property intelligence and service excellence supports our clients at every step on their property journey.

The developments we create benefit from our property obsession, and so do our many clients. They know that from the ground up, every detail of their new apartment has been designed to deliver an exceptional lifestyle experience, all backed by a professional team delivering integrated property services, including: sales, investment education, strata management, property management and mortgage broking.

We create award-winning developments and have been awarded in consecutive years in the UDIA (Urban Development Institute of Australia) Awards for Excellence for our two most recently completed projects – in 2015 for our project Monare Apartments Highgate in the Medium Density Development category, and in 2016 for Aria Swanbourne Luxury Apartments in the High Density Development category.

We're proud of our long history, but we're about what's next, what's around the corner. Every element of our integrated business is driven by a desire to apply the most progressive thinking, the most innovative ideas. We stay ahead of the curve so our clients can make the most of change, to secure their future.

 **BLACKBURNE**
OUR STRENGTH - YOUR VISION



BLACKBURN
OUR STRENGTH - YOUR VISION

ENCLAVE
EAST PERTH

PARK | RIVER | CITY

enclav Perth.com.au