

# LOT 25 - CNR ELLIS WAY & PARKLANDS BLVD



\*Image for display purposes only, subject to change.

## TOWNHOUSE

2 2 1

### OFF PLAN SALES

Featuring a metropolitan urban design with a light and airy aspect these aesthetically vibrant homes will appeal to the young professional demographic. Meridan Plains is the ultimate, laidback lifestyle location at the southern end of the Sunshine Coast. Surrounded by parkland, local schools, shopping, and just a short drive from Caloundra's business district. Just 100km north of Brisbane, where the cool pleasures of the hinterland fuse with the beauty of the coastal waters.



**1st TENANT GUARANTEE**



**TENANT READY**



**RESALE READY**

### COMPLETION ESTIMATE

February/March 2019

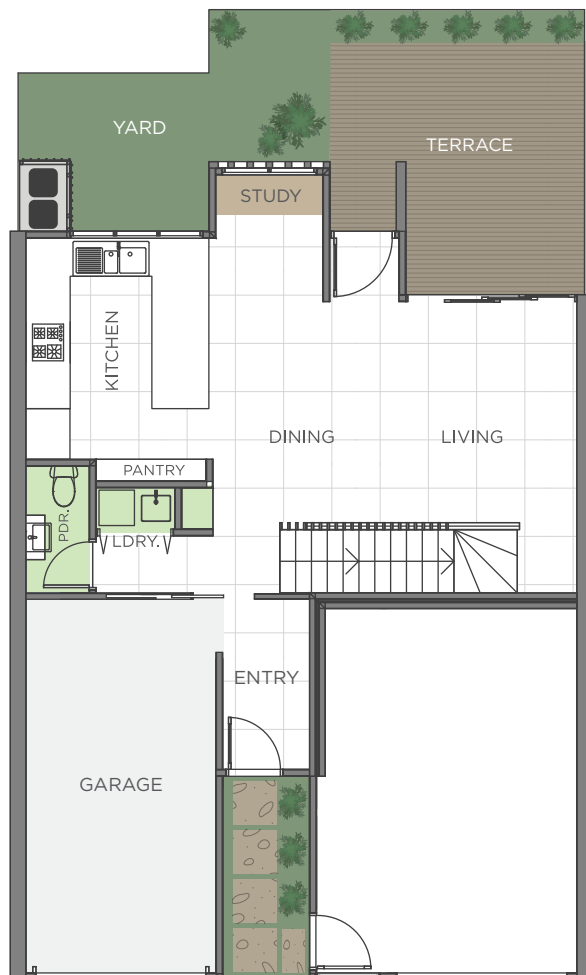
<b>GARAGE</b>	23m <sup>2</sup>
<b>INTERNAL</b>	114m <sup>2</sup>
<b>DECK</b>	15m <sup>2</sup>
<b>TOTAL SIZE</b>	152m <sup>2</sup>

### INITIAL DEPOSIT

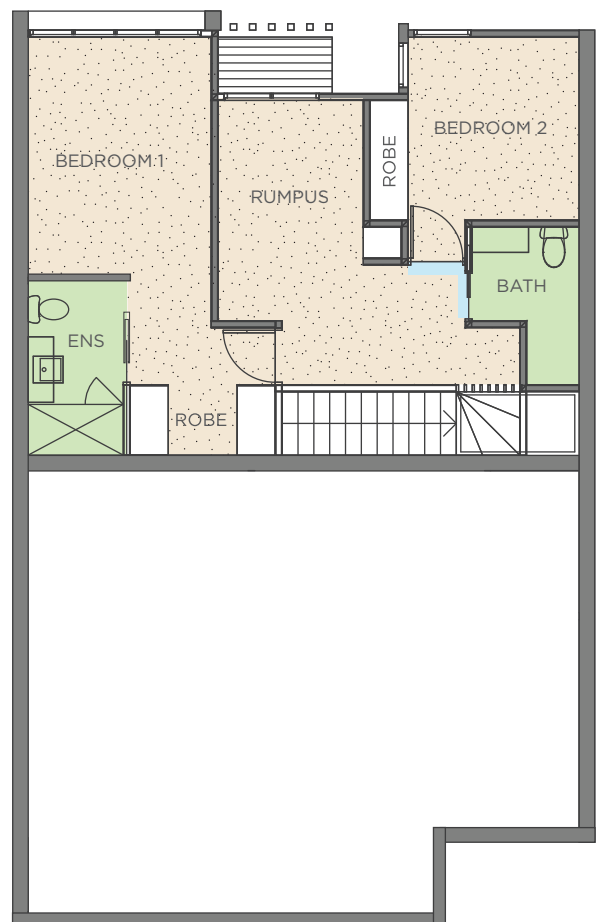
10%

## PACIFIC - TWO BEDROOM

The Pacific is our 2 bedroom, 2 bath, single garage open plan unit. With an outdoor entertaining area and spacious living environment, Pacific perfectly emulates the relaxed Sunshine Coast lifestyle.



LOWER LEVEL



UPPER LEVEL