

ADDISON

Tenant Ready Collection

TenantReady 



Areas

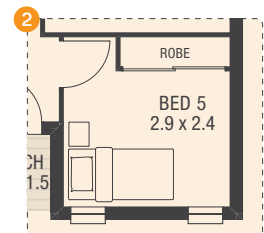
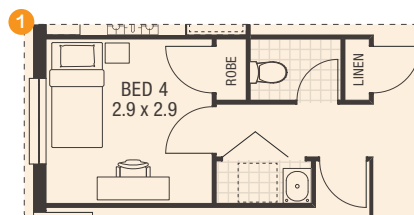
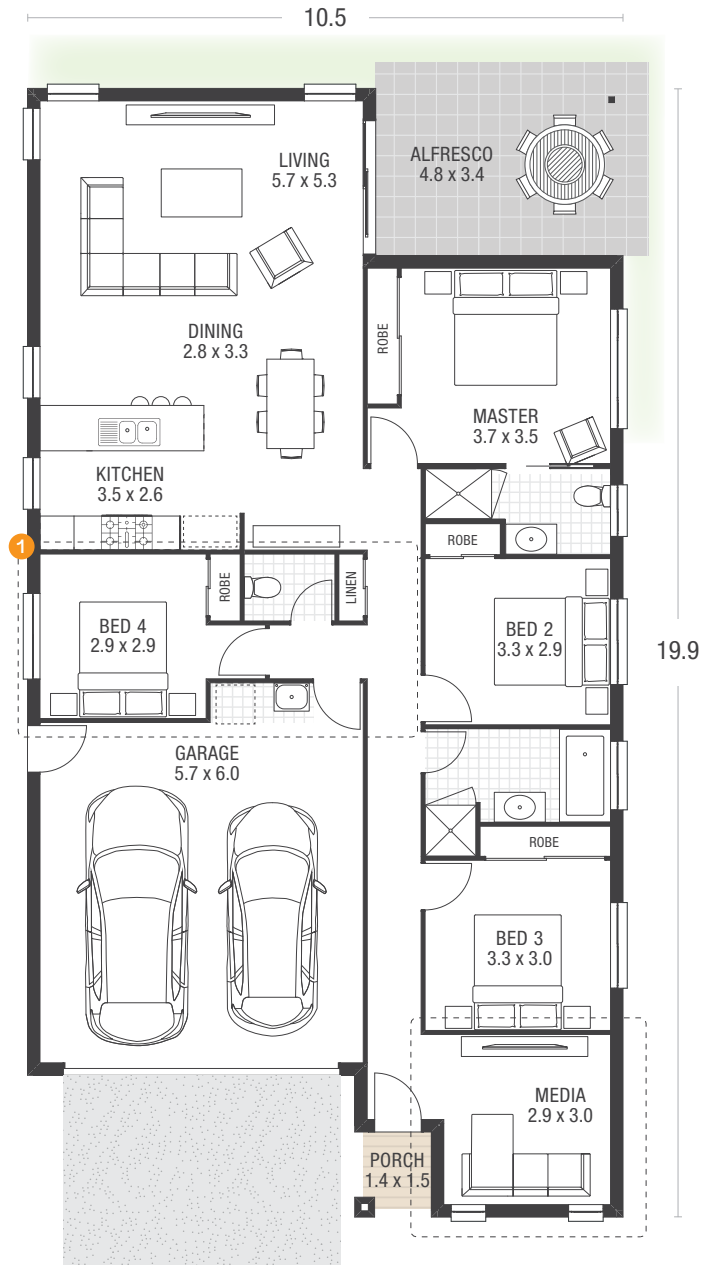
Ground Floor	15.5sq	143.6m ²
Garage	3.9sq	36.1m ²
Outdoor Living	1.7sq	16.4m ²
Porch	0.2sq	2.0m ²
Total Area	21.3sq	198.0m²
Home Length	19.9m	
Home Width	10.5m	

Design Features

A streamlined design featuring 4 bedrooms, 2 bathrooms, a media room and a double car garage the Nixon offers comfortability for the large family. The open living and dining area leads out onto a spacious alfresco perfect for entertaining.

Home Option

- 1 Laundry relocation, size and door change to linen and bed 2 robe and reposition of bed 2 door.



16.0+
14.0
12.5
10.0

MINIMUM
LOT WIDTH