

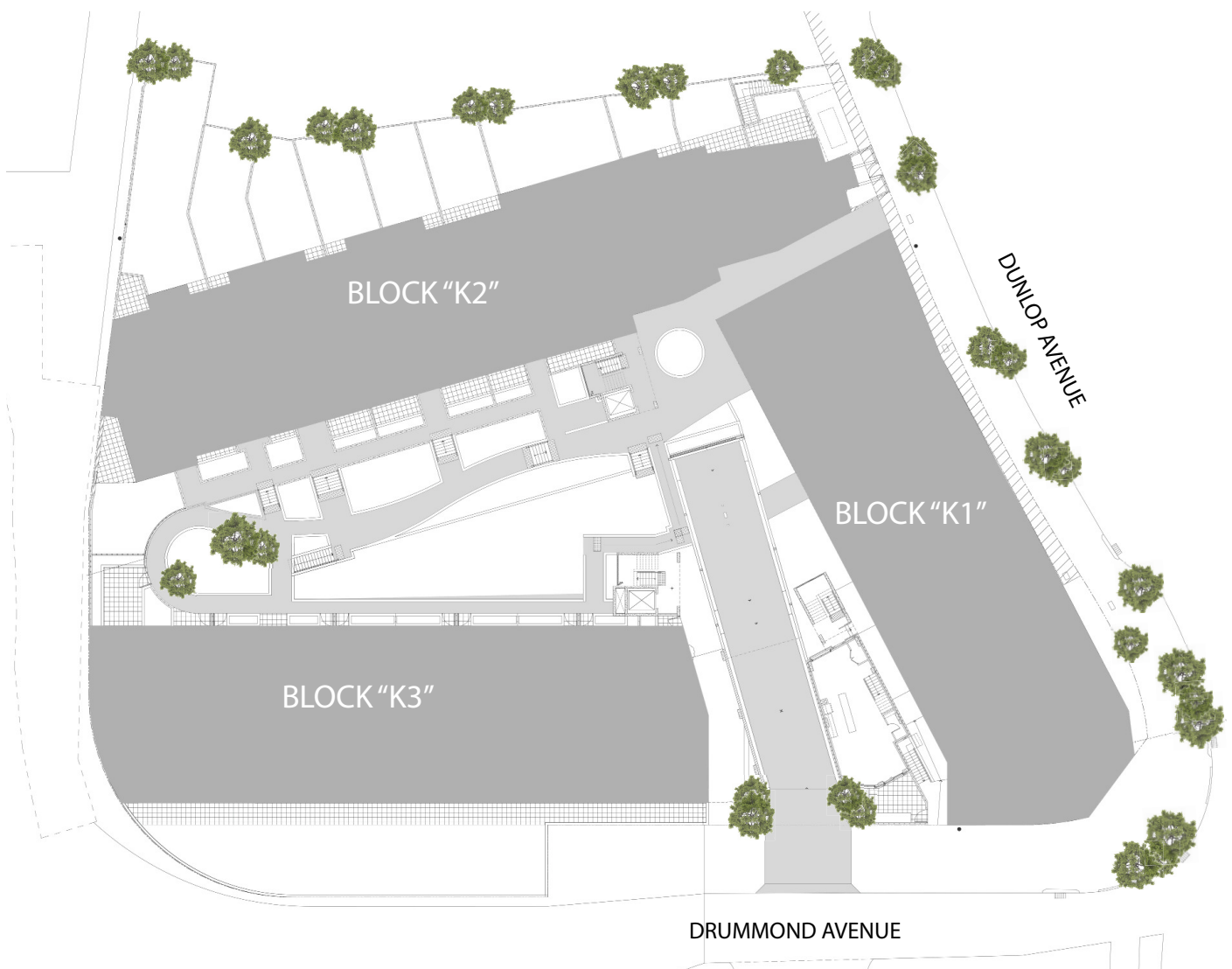


BLOCK "K3" LOT 104, DUNLOP AVE, ROPES CROSSING

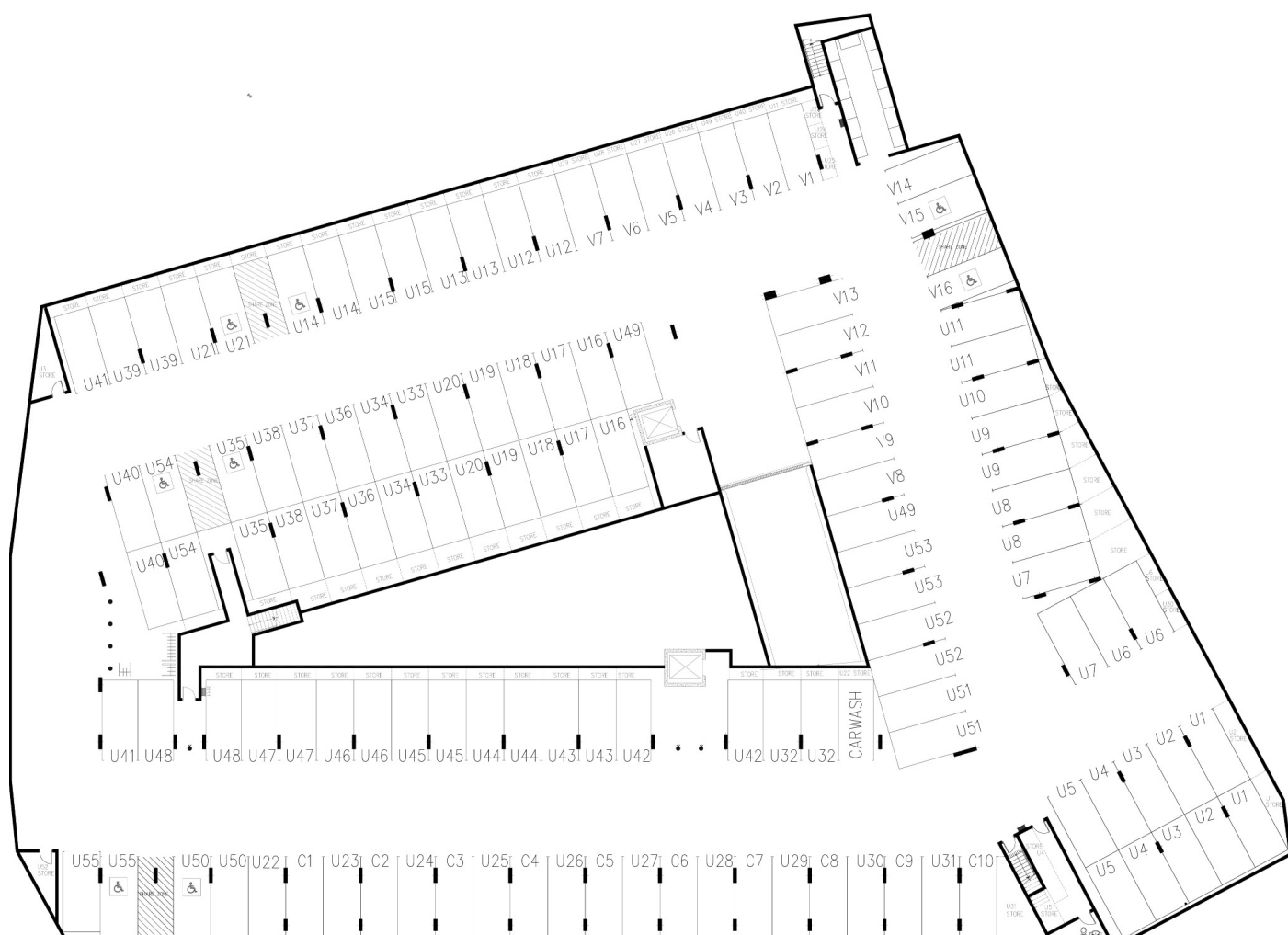


1/127 MAGOWAR STREET, GIRRAWEE NSW 2145
PH: (02) 9636 2465 | FACSIMILE: (02) 9688 4762
E-MAIL : INFO@BATHLA.COM.AU

SITE PLAN

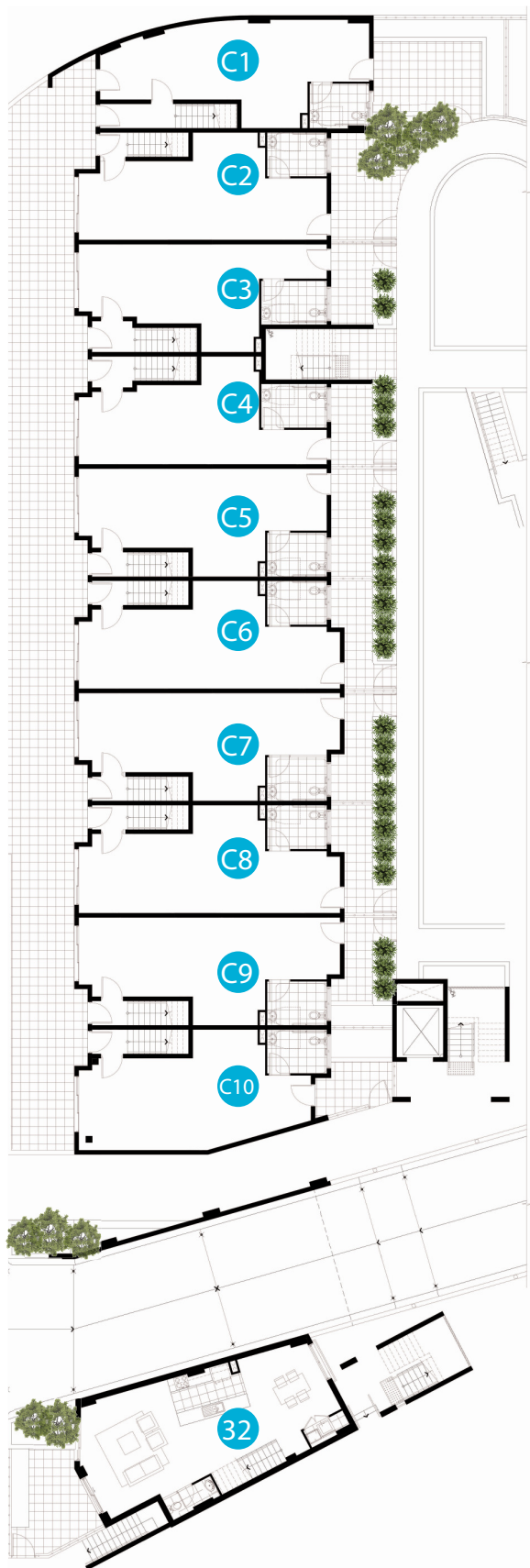


BASEMENT



GROUND LEVEL

DRUMMOND AVENUE



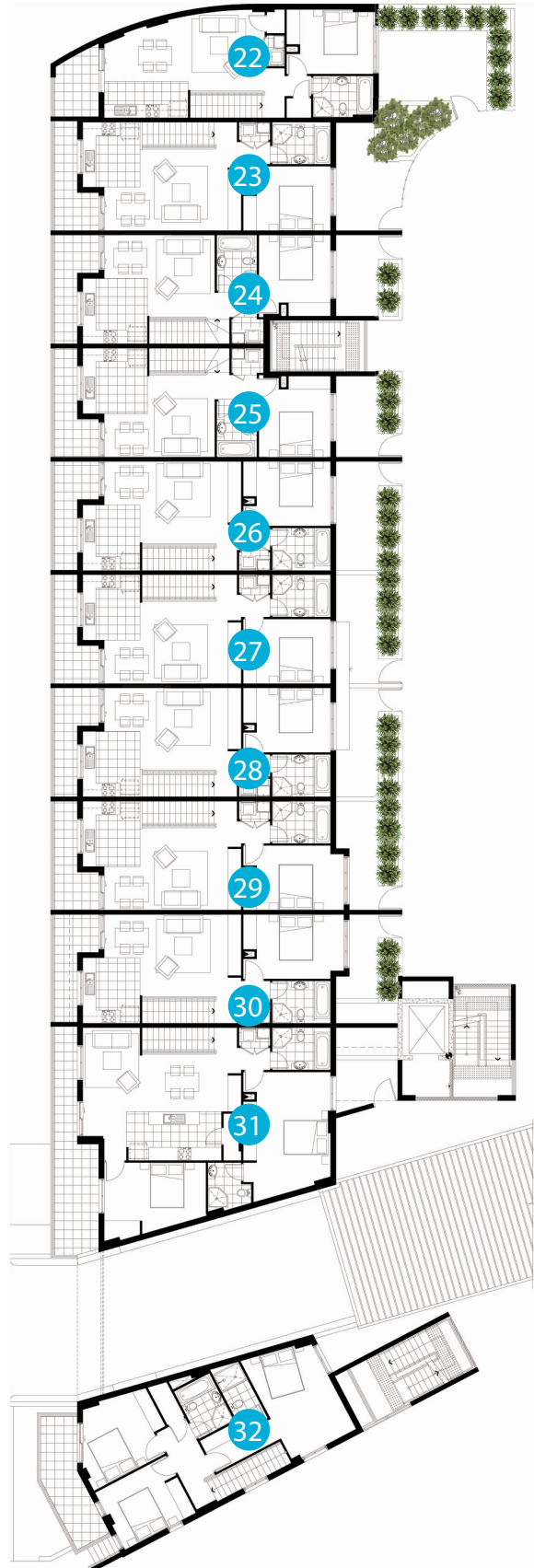


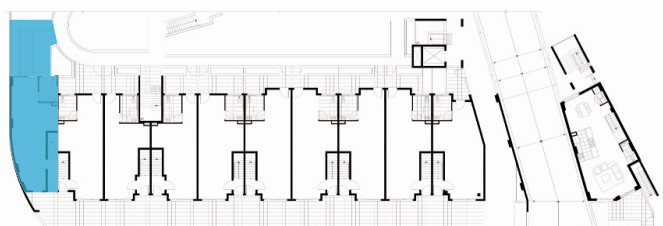
Western Sydney
PROPERTY GROUP

BLOCK K3, LOT 104,
DUNLOP AVE
ROPES CROSSING

LEVEL 1

DRUMMOND AVENUE

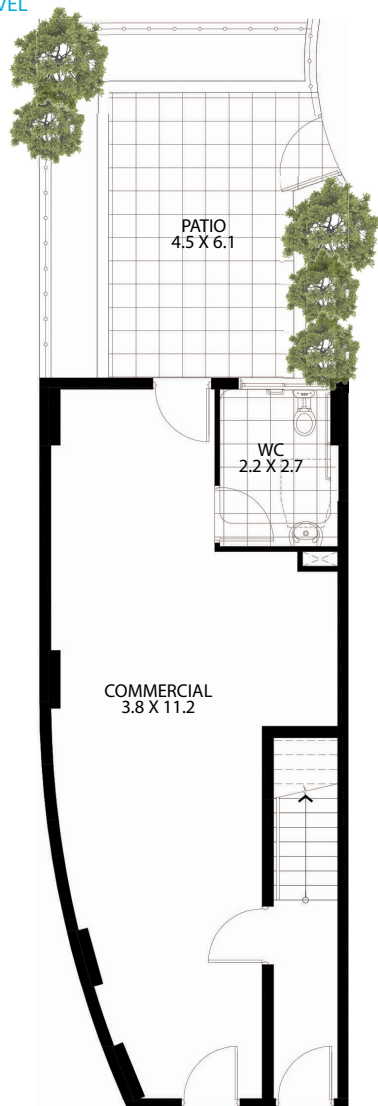




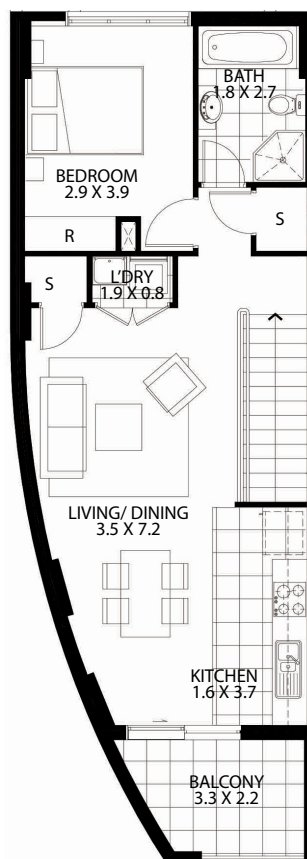
UNIT LOCATION - GROUND LEVEL



3D VIEW



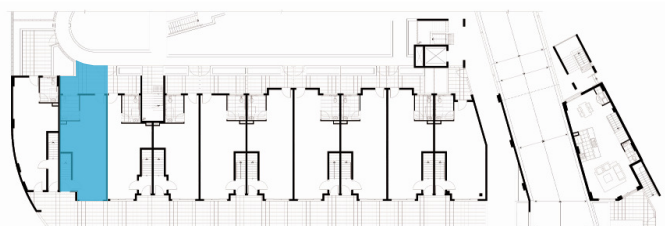
LOWER LEVEL



UPPER LEVEL

			LOWER LEVEL	UPPER LEVEL	BALCONY + PATIO	CARPARK + STORAGE	TOTAL AREA
1	1	2	62 m ²	62 m ²	38 m ²	29 m ²	191 m ²

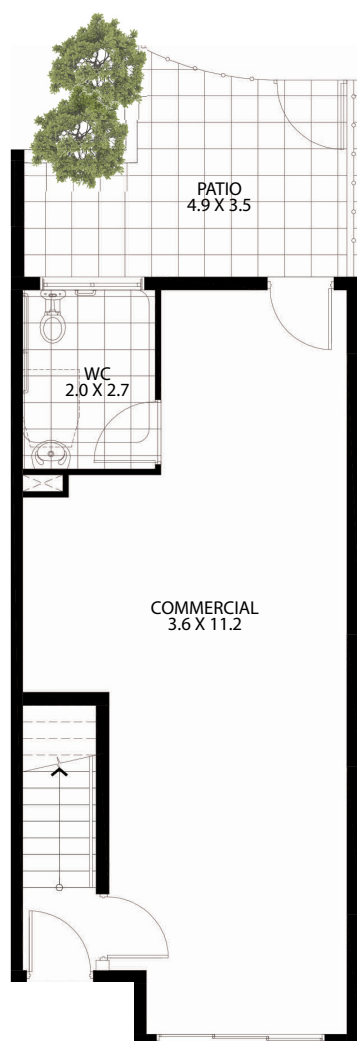




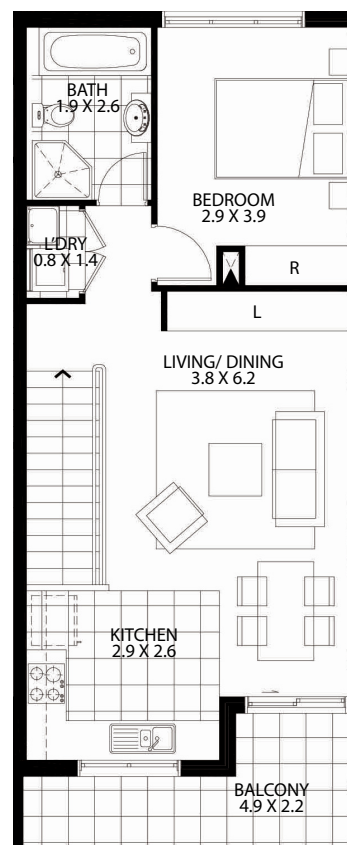
UNIT LOCATION - GROUND LEVEL






3D VIEW



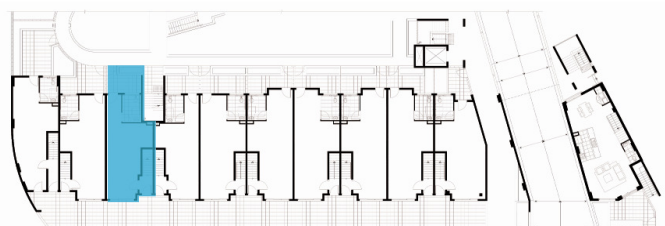
LOWER LEVEL



UPPER LEVEL

			LOWER LEVEL	UPPER LEVEL	BALCONY + PATIO	CARPARK + STORAGE	TOTAL AREA
1	1	2	57 m ²	57 m ²	24 m ²	29 m ²	167 m ²

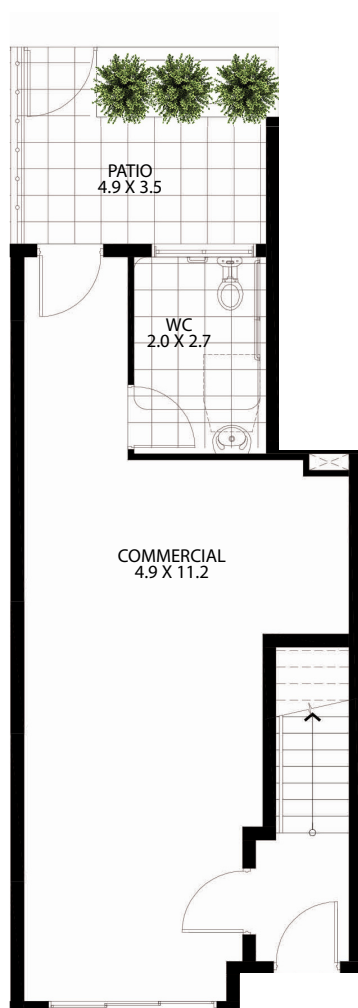




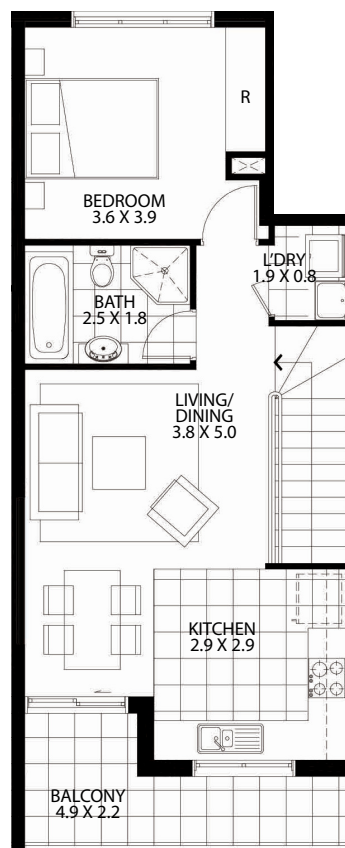
UNIT LOCATION - GROUND LEVEL






3D VIEW



LOWER LEVEL

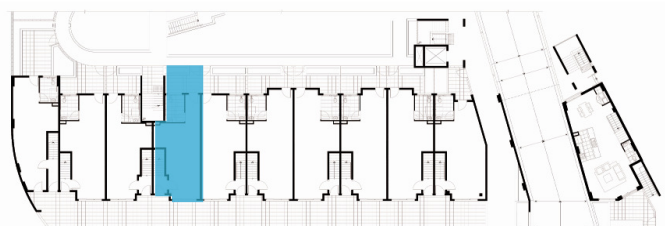


UPPER LEVEL

			LOWER LEVEL	UPPER LEVEL	BALCONY + PATIO	CARPARK + STORAGE	TOTAL AREA
1	1	2	55 m ²	54 m ²	20 m ²	29 m ²	158 m ²



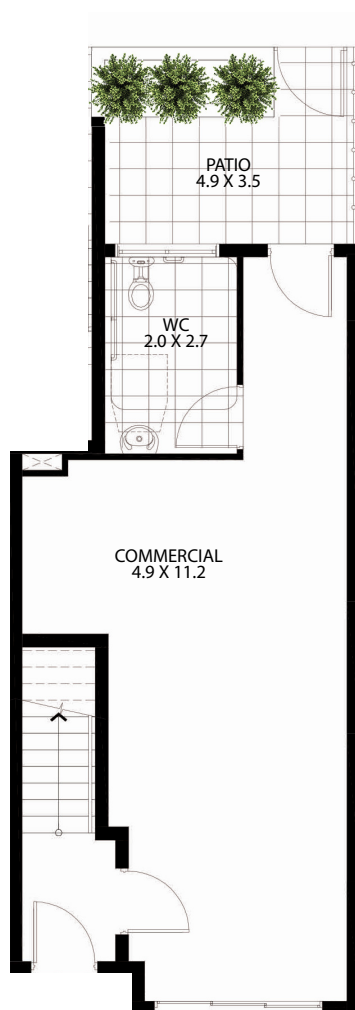
Area quoted to be used as guide only. This plan is for illustration purposes only. All information contained is gathered from sources deemed to be reliable. We have no doubt it is accurate however we cannot guarantee it. Areas are subject to final survey. Layout may change due to final council approval. The marketing plan and strata plan area will vary because of the different methods of calculation adopted. The marketing plan area is based on gross floor areas while the strata area is based on Strata Schemes (Freehold Development) Act 1973. Note: Store(S), Robe(R), bath fixtures, laundry fixtures & kitchen joinery fixtures, form part of sales package. TV and other items such as credenza, sofa, study desk, TV units & beds are not included as part of sale. Windows and doors sizes are indicative and subject to change based on legislative approval.



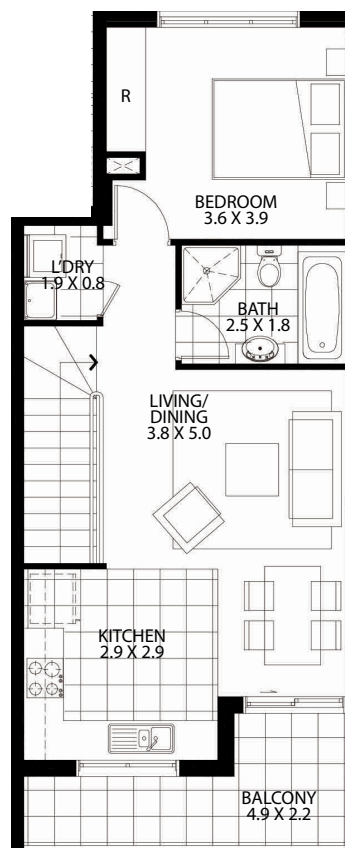
UNIT LOCATION - GROUND LEVEL






3D VIEW



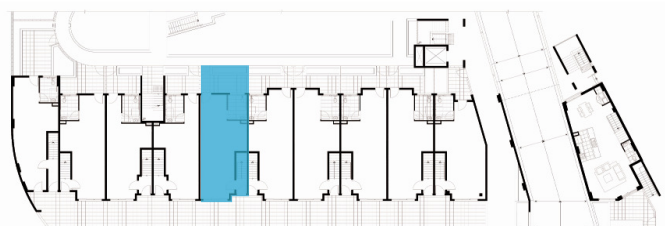
LOWER LEVEL



UPPER LEVEL

			LOWER LEVEL	UPPER LEVEL	BALCONY + PATIO	CARPARK + STORAGE	TOTAL AREA
1	1	2	55 m ²	54 m ²	20 m ²	29 m ²	158 m ²

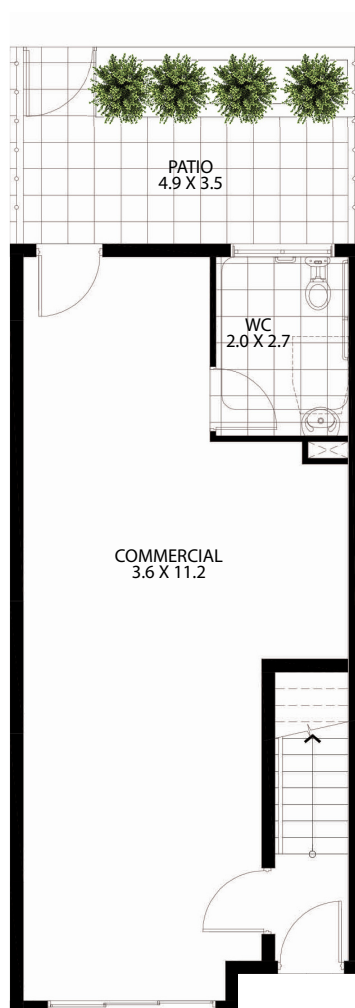




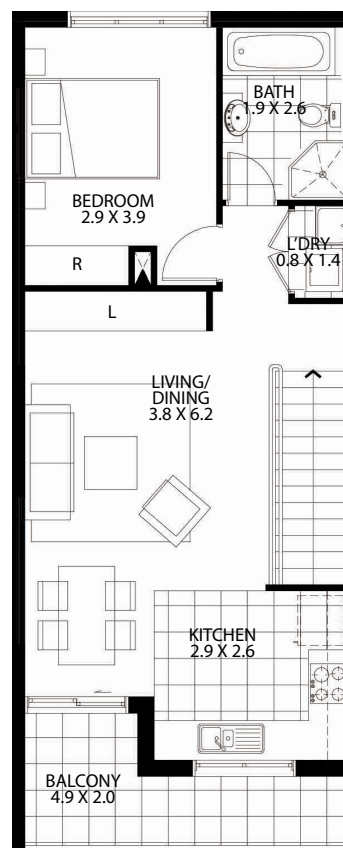
UNIT LOCATION - GROUND LEVEL






3D VIEW



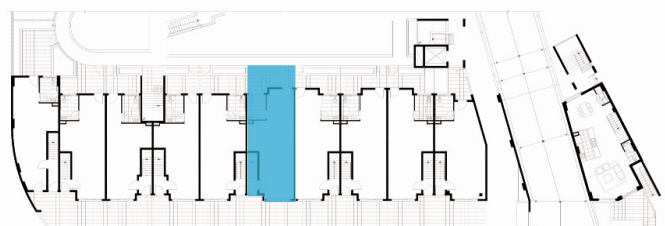
LOWER LEVEL



UPPER LEVEL

			LOWER LEVEL	UPPER LEVEL	BALCONY + PATIO	CARPARK + STORAGE	TOTAL AREA
1	1	2	58 m ²	58 m ²	23 m ²	29 m ²	165 m ²

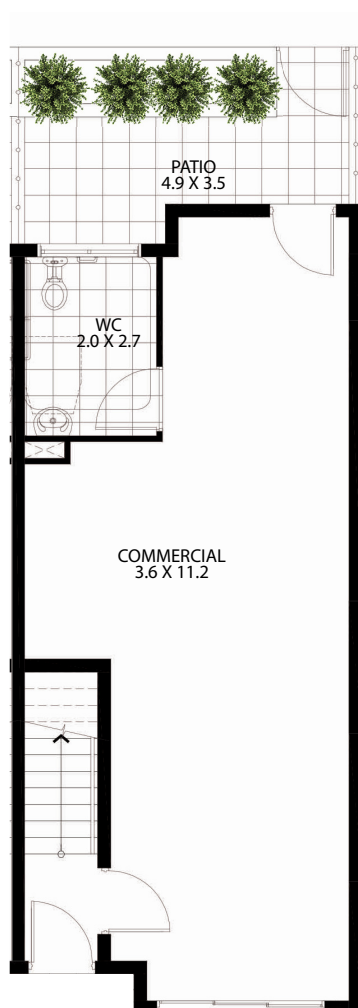




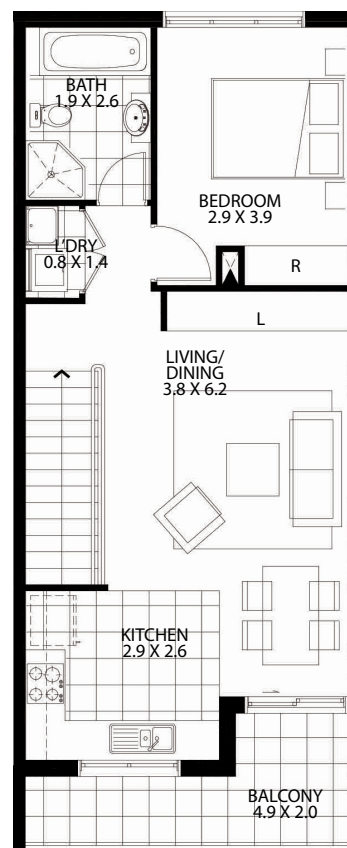
UNIT LOCATION - GROUND LEVEL






3D VIEW



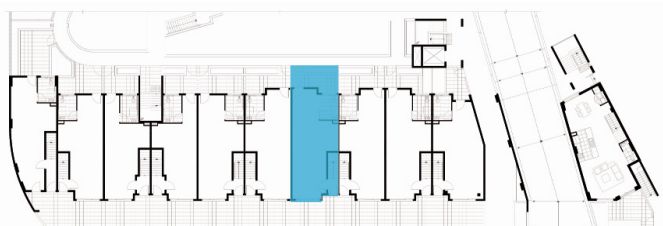
LOWER LEVEL



UPPER LEVEL

			LOWER LEVEL	UPPER LEVEL	BALCONY + PATIO	CARPARK + STORAGE	TOTAL AREA
1	1	2	60 m ²	58 m ²	21 m ²	29 m ²	168 m ²

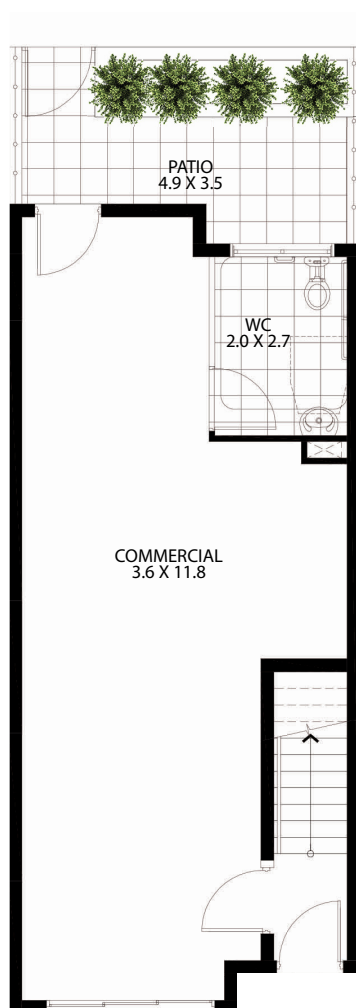




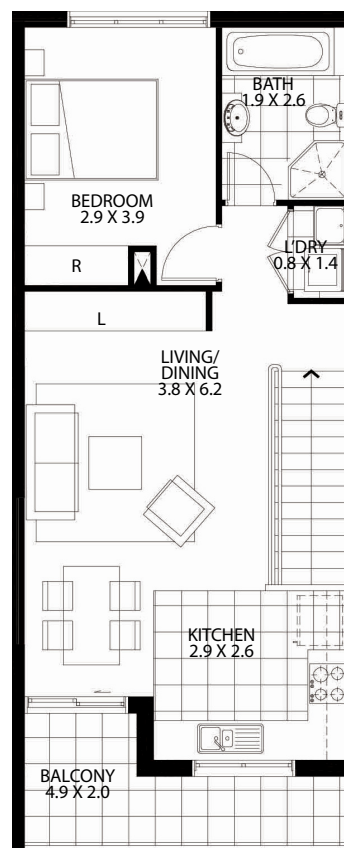
UNIT LOCATION - GROUND LEVEL






3D VIEW



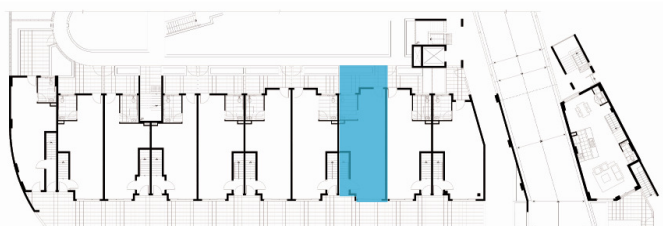
LOWER LEVEL



UPPER LEVEL

			LOWER LEVEL	UPPER LEVEL	BALCONY + PATIO	CARPARK + STORAGE	TOTAL AREA
1	1	2	60 m ²	58 m ²	21 m ²	29 m ²	168 m ²

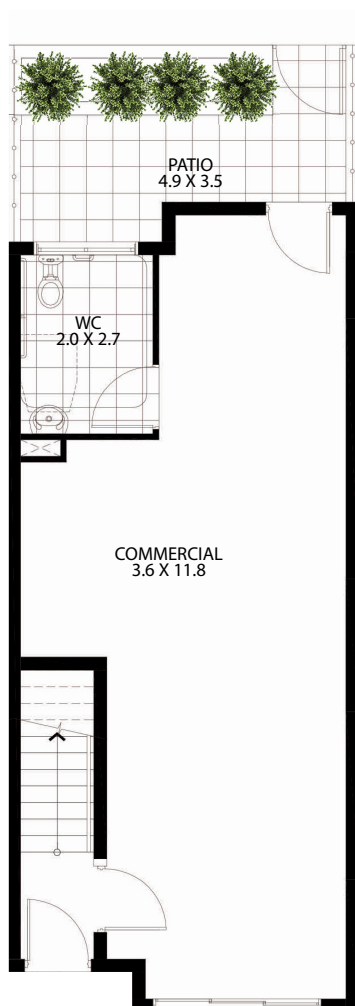




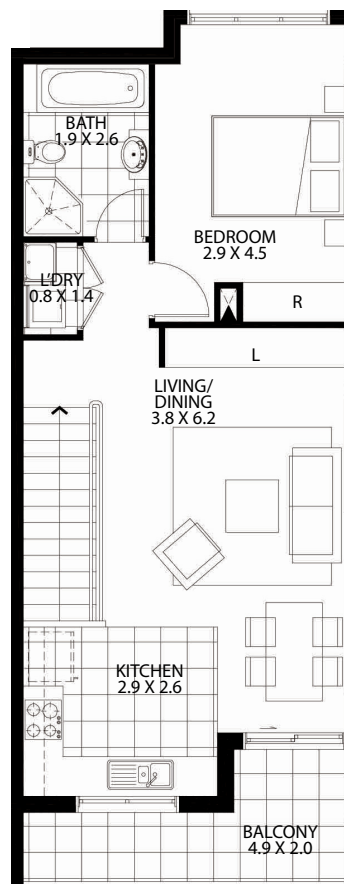
UNIT LOCATION - GROUND LEVEL





3D VIEW



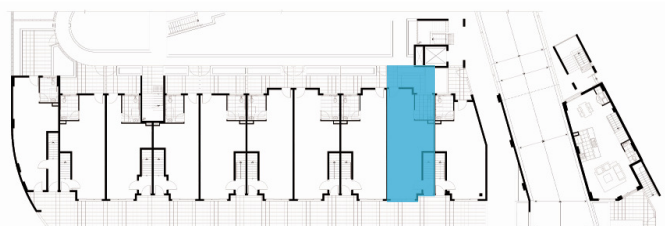
LOWER LEVEL



UPPER LEVEL

			LOWER LEVEL	UPPER LEVEL	BALCONY + PATIO	CARPARK + STORAGE	TOTAL AREA
1	1	2	60 m ²	59 m ²	21 m ²	29 m ²	169 m ²

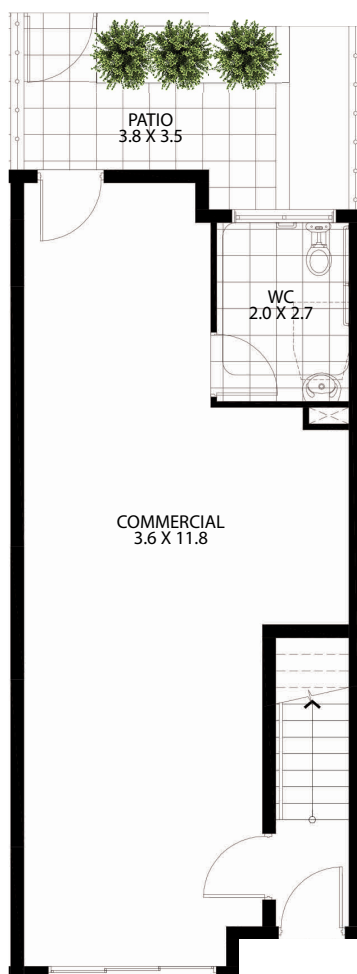




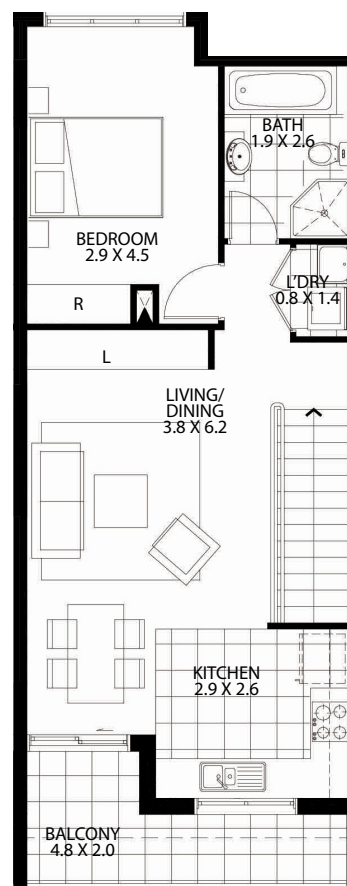
UNIT LOCATION - GROUND LEVEL



3D VIEW



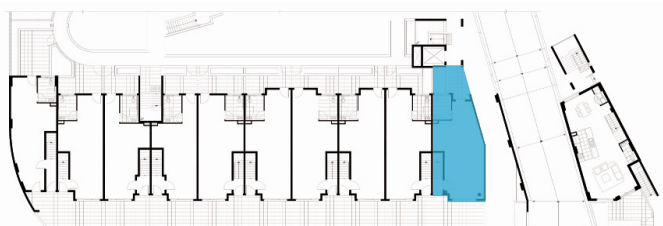
LOWER LEVEL



UPPER LEVEL

			LOWER LEVEL	UPPER LEVEL	BALCONY + PATIO	CARPARK + STORAGE	TOTAL AREA
1	1	2	60 m ²	59 m ²	21 m ²	30 m ²	170 m ²

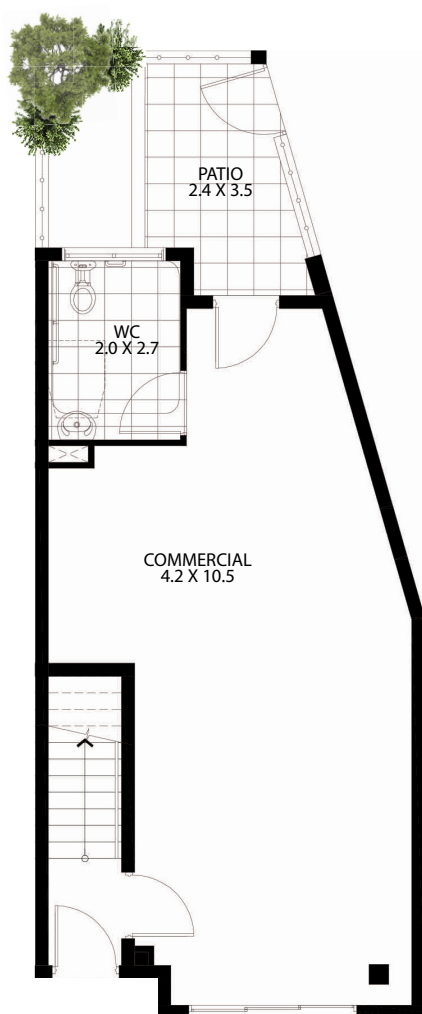




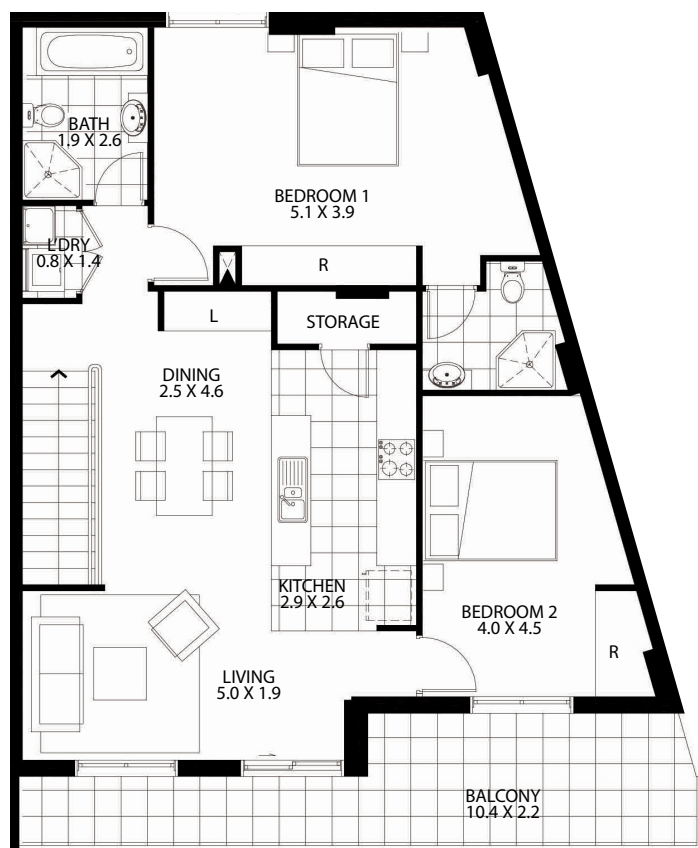
UNIT LOCATION - GROUND LEVEL






3D VIEW



LOWER LEVEL



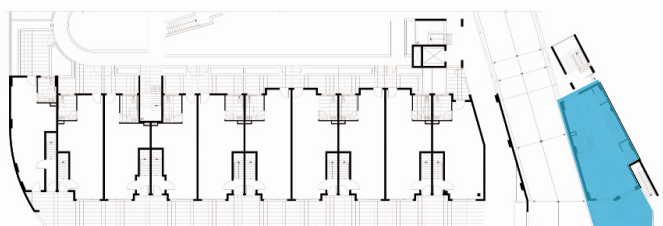
UPPER LEVEL

			LOWER LEVEL	UPPER LEVEL	BALCONY + PATIO	CARPARK + STORAGE	TOTAL AREA
2	2	2	60 m ²	98 m ²	29 m ²	37 m ²	224 m ²



N

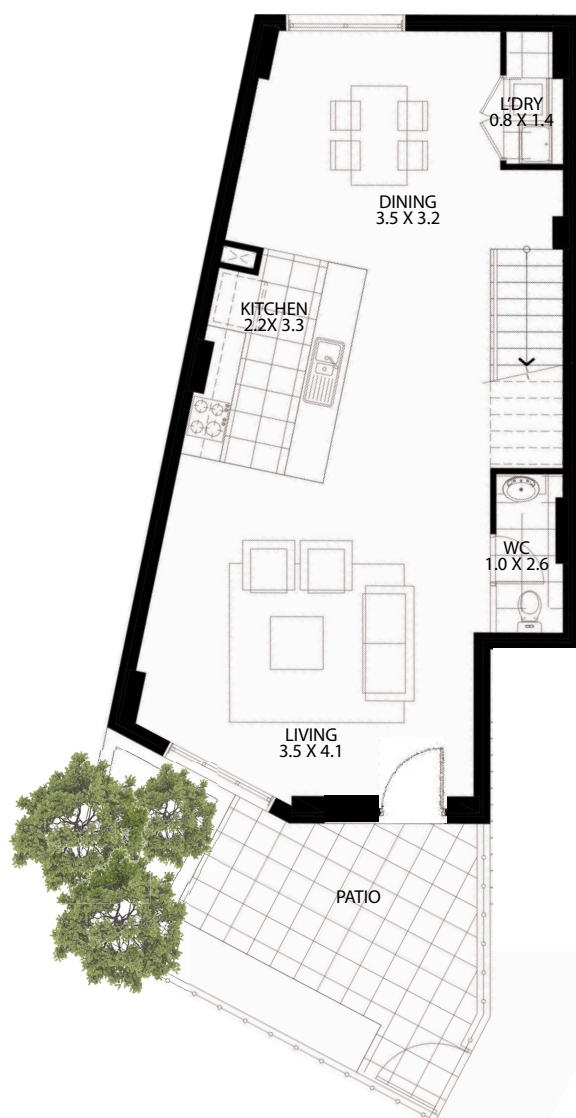
Area quoted to be used as guide only. This plan is for illustration purposes only. All information contained is gathered from sources deemed to be reliable. We have no doubt it is accurate however we cannot guarantee it. Areas are subject to final survey. Layout may change due to final council approval. The marketing plan and strata plan area will vary because of the different methods of calculation adopted. The marketing plan area is based on gross floor areas while the strata area is based on Strata Schemes (Freehold Development) Act 1973. Note: Store(S), Robe(R), bath fixtures, laundry fixtures & kitchen joinery fixtures, form part of sales package. TV and other items such as credenza, sofa, study desk, TV units & beds are not included as part of sale. Windows and doors sizes are indicative and subject to change based on legislative approval.



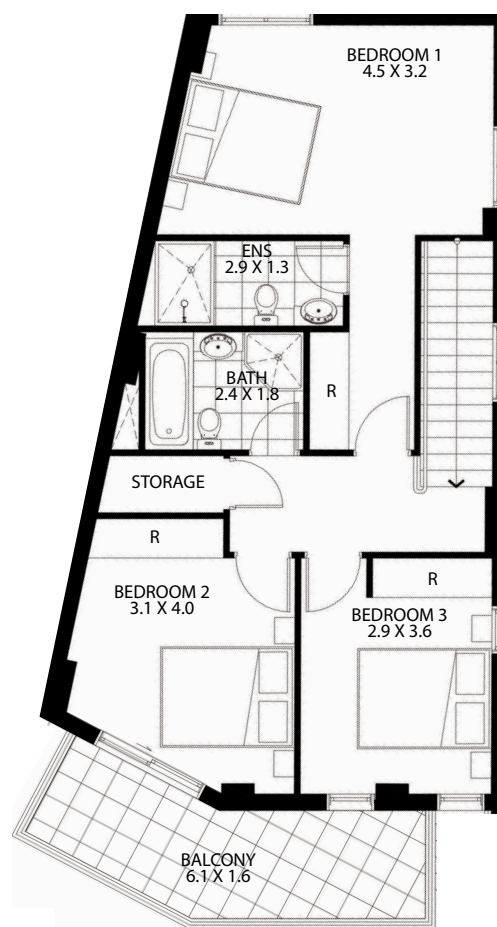
UNIT LOCATION - GROUND LEVEL






3D VIEW



LOWER LEVEL



UPPER LEVEL

			LOWER LEVEL	UPPER LEVEL	BALCONY + PATIO	CARPARK + STORAGE	TOTAL AREA
3	2	2	70 m ²	73 m ²	34 m ²	31 m ²	208 m ²

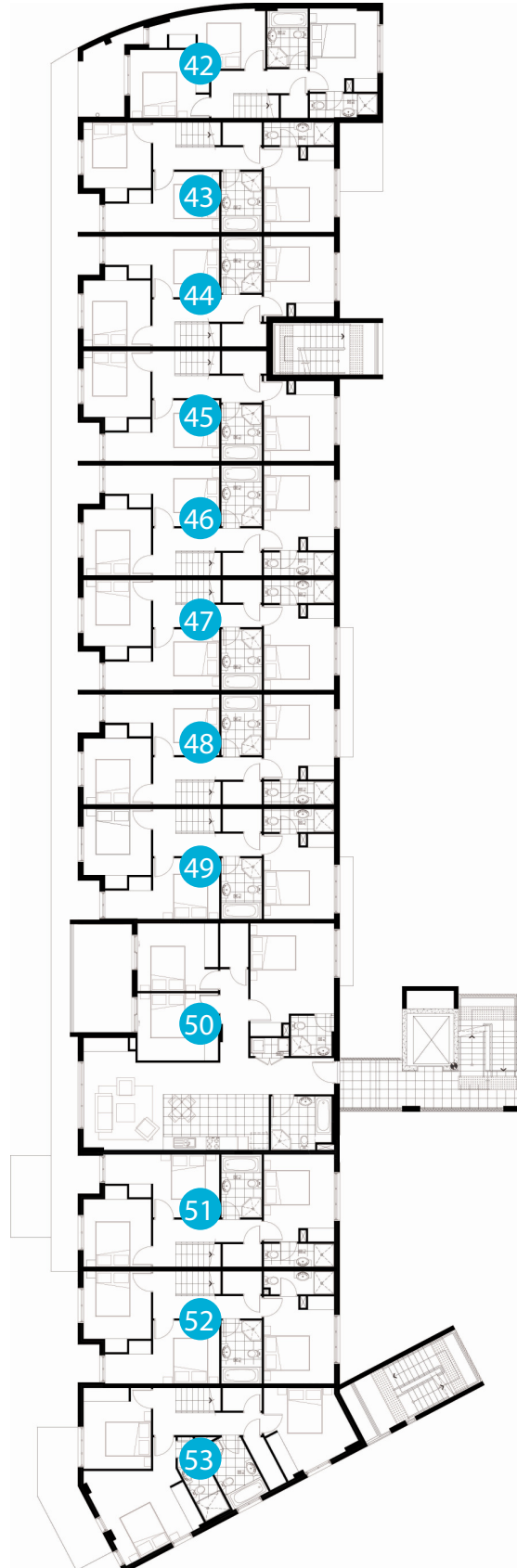


N

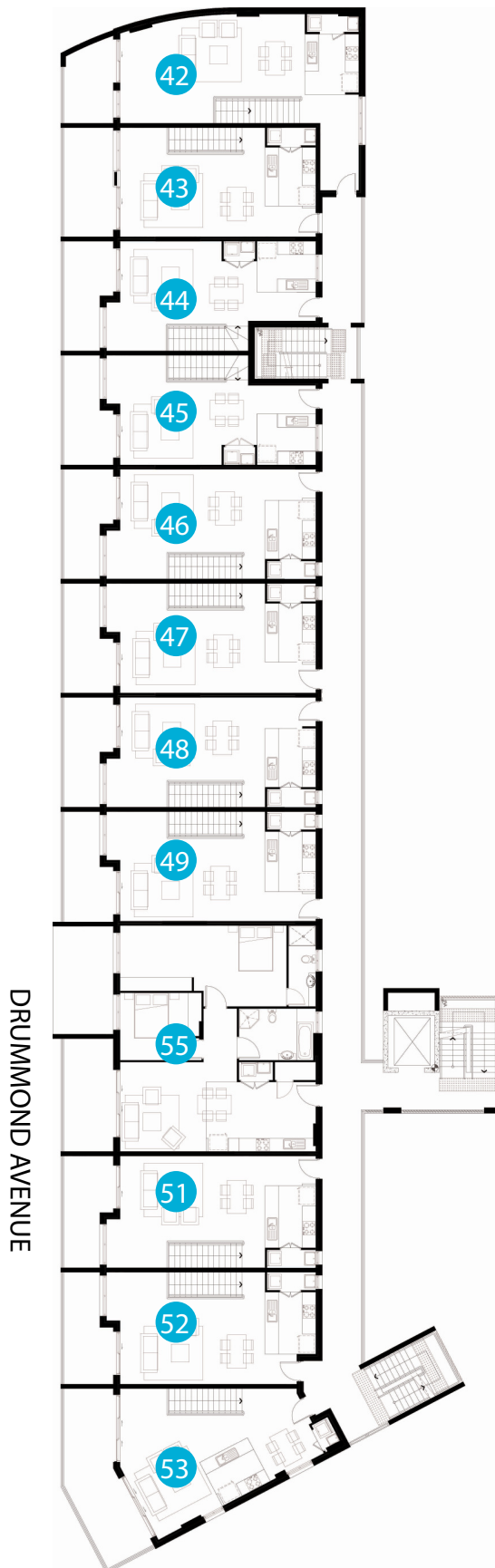
Area quoted to be used as guide only. This plan is for illustration purposes only. All information contained is gathered from sources deemed to be reliable. We have no doubt it is accurate however we cannot guarantee it. Areas are subject to final survey. Layout may change due to final council approval. The marketing plan and strata plan area will vary because of the different methods of calculation adopted. The marketing plan area is based on gross floor areas while the strata area is based on Strata Schemes (Freehold Development) Act 1973. Note: Store(S), Robe(R), bath fixtures, laundry fixtures & kitchen joinery fixtures, form part of sales package. TV and other items such as credenza, sofa, study desk, TV units & beds are not included as part of sale. Windows and doors sizes are indicative and subject to change based on legislative approval.

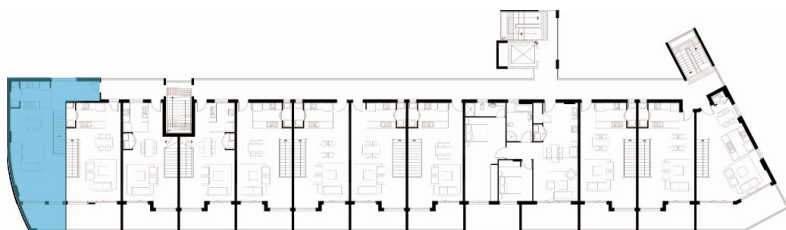
LEVEL 2

DRUMMOND AVENUE



LEVEL 3

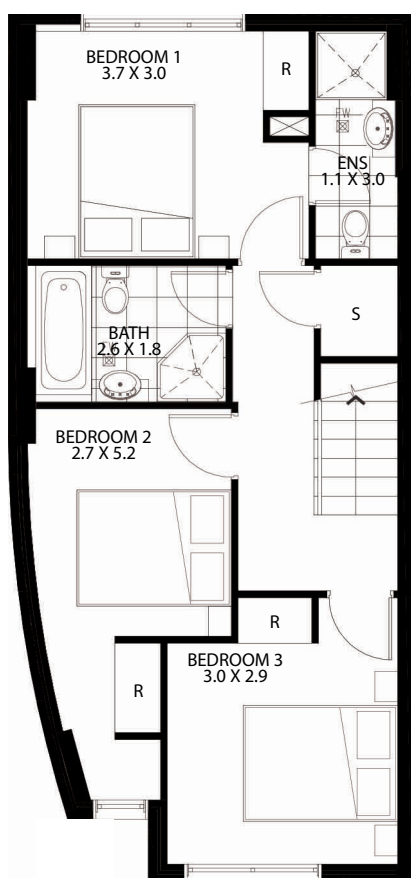




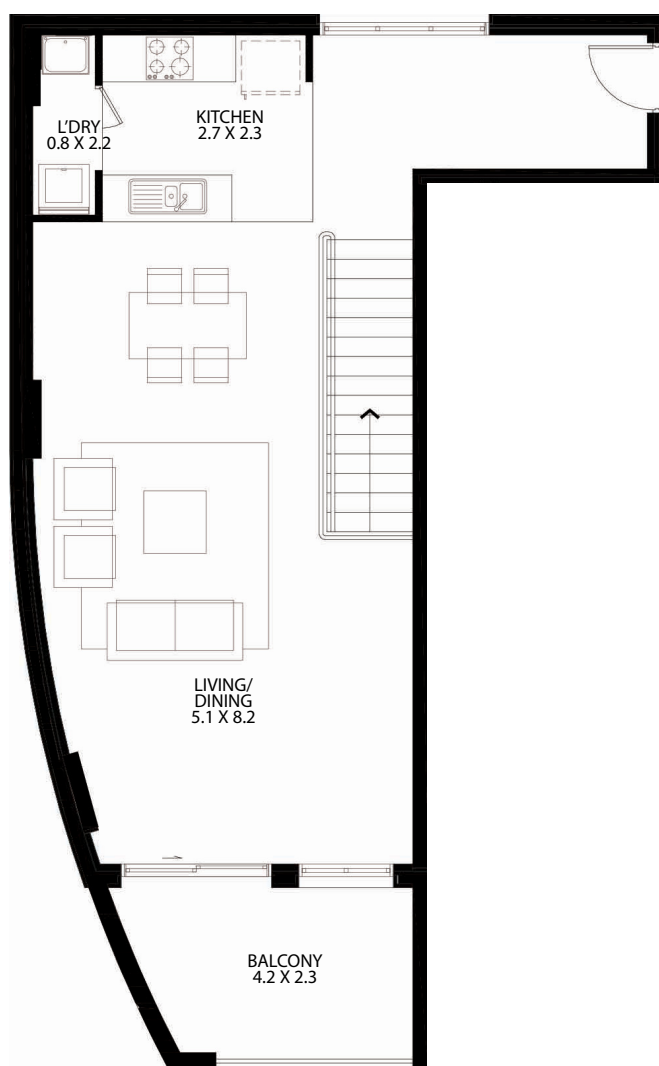
UNIT LOCATION - LEVEL 3






3D VIEW



LOWER LEVEL



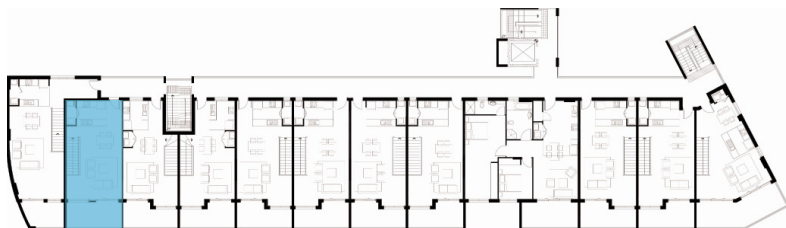
UPPER LEVEL

			LOWER LEVEL	UPPER LEVEL	BALCONY	CARPARK + STORAGE	TOTAL AREA
3	2	2	57 m ²	64 m ²	9 m ²	30 m ²	160 m ²



N

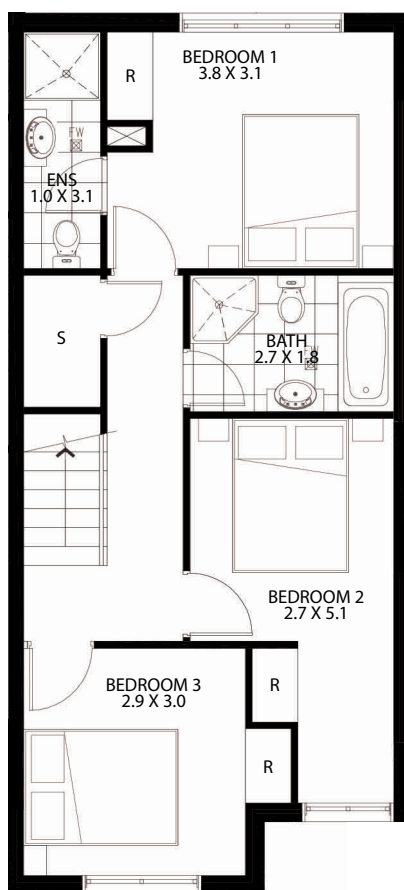
Area quoted to be used as guide only. This plan is for illustration purposes only. All information contained is gathered from sources deemed to be reliable. We have no doubt it is accurate however we cannot guarantee it. Areas are subject to final survey. Layout may change due to final council approval. The marketing plan and strata plan area will vary because of the different methods of calculation adopted. The marketing plan area is based on gross floor areas while the strata area is based on Strata Schemes (Freehold Development) Act 1973. Note: Store(S), Robe(R), bath fixtures, laundry fixtures & kitchen joinery fixtures, form part of sales package. TV and other items such as credenza, sofa, study desk, TV units & beds are not included as part of sale. Windows and doors sizes are indicative and subject to change based on legislative approval.



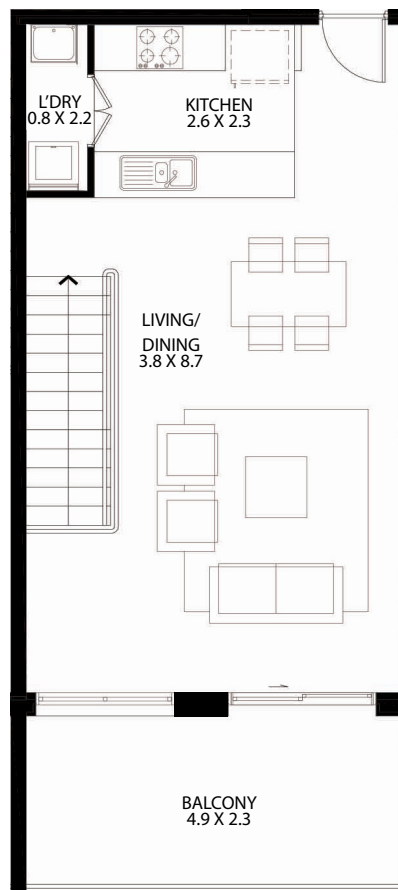
UNIT LOCATION - LEVEL 3






3D VIEW



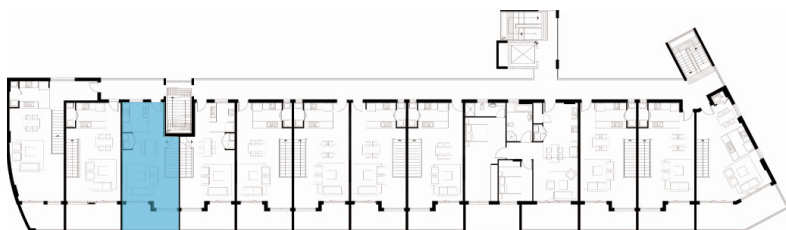
LOWER LEVEL



UPPER LEVEL

			LOWER LEVEL	UPPER LEVEL	BALCONY	CARPARK + STORAGE	TOTAL AREA
3	2	2	58 m ²	47 m ²	12 m ²	31 m ²	148 m ²

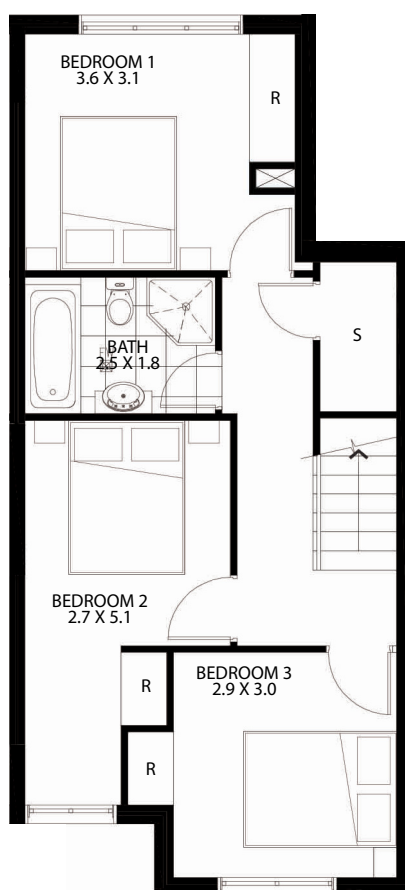




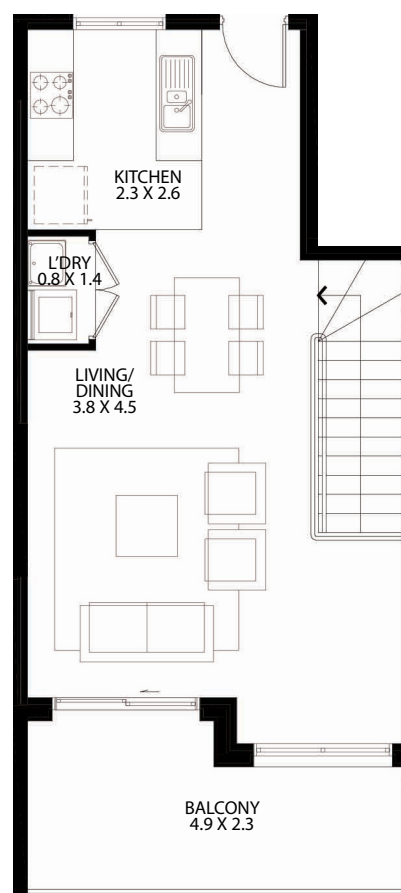
UNIT LOCATION - LEVEL 3



3D VIEW



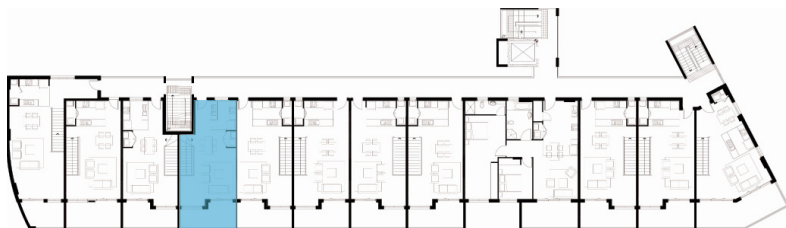
LOWER LEVEL



UPPER LEVEL

			LOWER LEVEL	UPPER LEVEL	BALCONY	CARPARK + STORAGE	TOTAL AREA
3	1	2	53 m ²	45 m ²	10 m ²	31 m ²	139 m ²

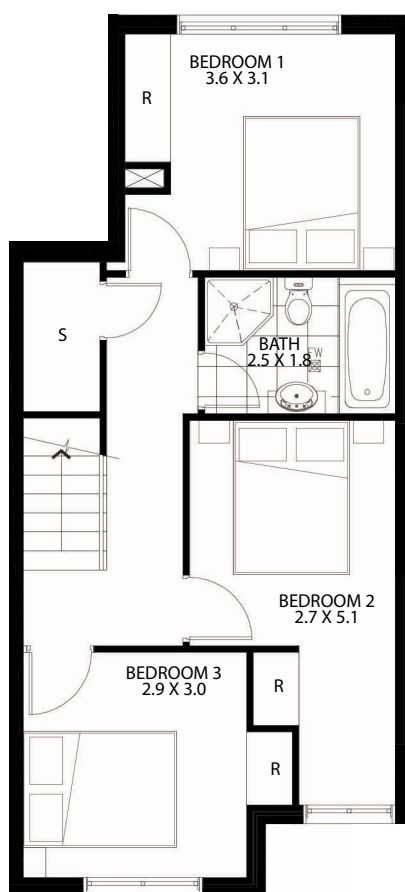




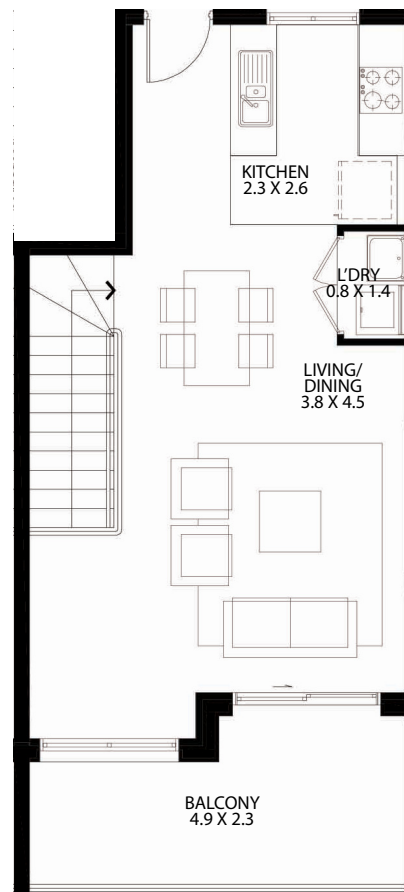
UNIT LOCATION - LEVEL 3






3D VIEW



LOWER LEVEL



UPPER LEVEL

			LOWER LEVEL	UPPER LEVEL	BALCONY	CARPARK + STORAGE	TOTAL AREA
3	1	2	54 m ²	46 m ²	10 m ²	31 m ²	141 m ²



N

Area quoted to be used as guide only. This plan is for illustration purposes only. All information contained is gathered from sources deemed to be reliable. We have no doubt it is accurate however we cannot guarantee it. Areas are subject to final survey. Layout may change due to final council approval. The marketing plan and strata plan area will vary because of the different methods of calculation adopted. The marketing plan area is based on gross floor areas while the strata area is based on Strata Schemes (Freehold Development) Act 1973. Note: Store(S), Robe(R), bath fixtures, laundry fixtures & kitchen joinery fixtures, form part of sales package. TV and other items such as credenza, sofa, study desk, TV units & beds are not included as part of sale. Windows and doors sizes are indicative and subject to change based on legislative approval.



Western Sydney
PROPERTY GROUP

46

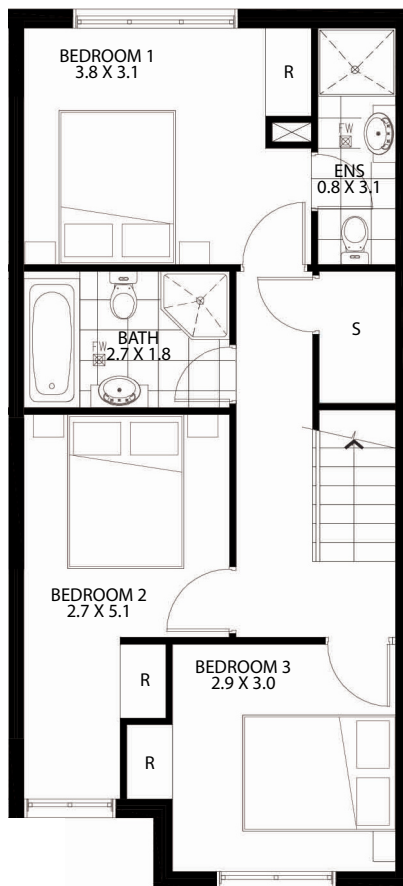
BLOCK K3, LOT 104,
DUNLOP AVE
ROPES CROSSING



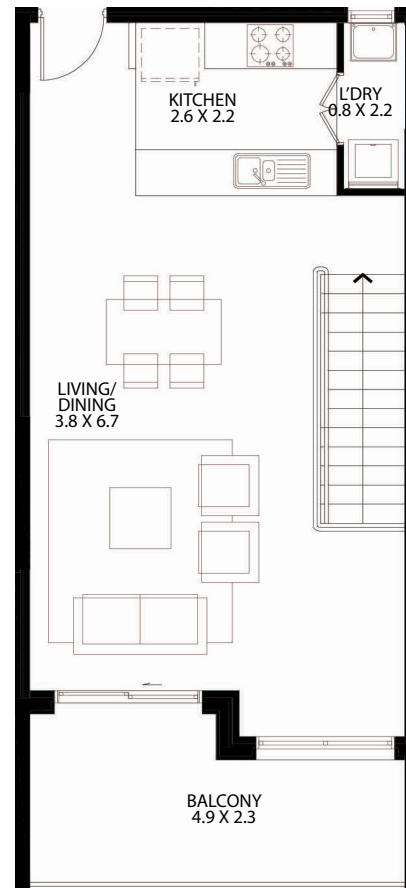
UNIT LOCATION - LEVEL 3



3D VIEW



LOWER LEVEL



UPPER LEVEL

			LOWER LEVEL	UPPER LEVEL	BALCONY	CARPARK + STORAGE	TOTAL AREA
3	2	2	57 m ²	49 m ²	10 m ²	31 m ²	137 m ²



N

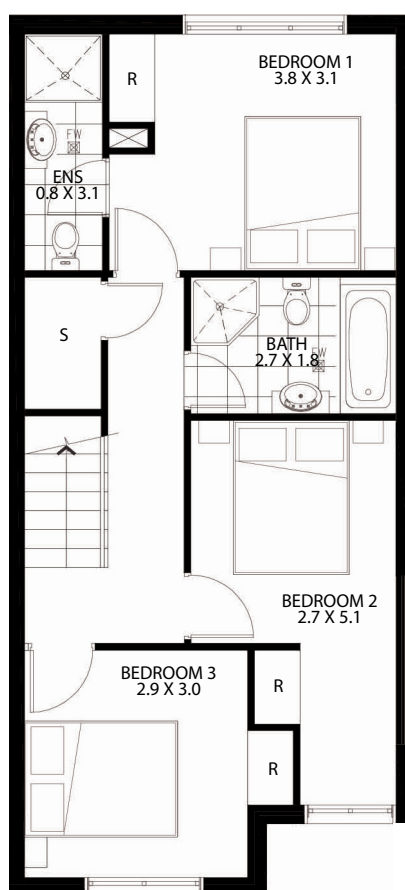
Area quoted to be used as guide only. This plan is for illustration purposes only. All information contained is gathered from sources deemed to be reliable. We have no doubt it is accurate however we cannot guarantee it. Areas are subject to final survey. Layout may change due to final council approval. The marketing plan and strata plan area will vary because of the different methods of calculation adopted. The marketing plan area is based on gross floor areas while the strata area is based on Strata Schemes (Freehold Development) Act 1973. Note: Store(S), Robe(R), bath fixtures, laundry fixtures & kitchen joinery fixtures, form part of sales package. TV and other items such as credenza, sofa, study desk, TV units & beds are not included as part of sale. Windows and doors sizes are indicative and subject to change based on legislative approval.



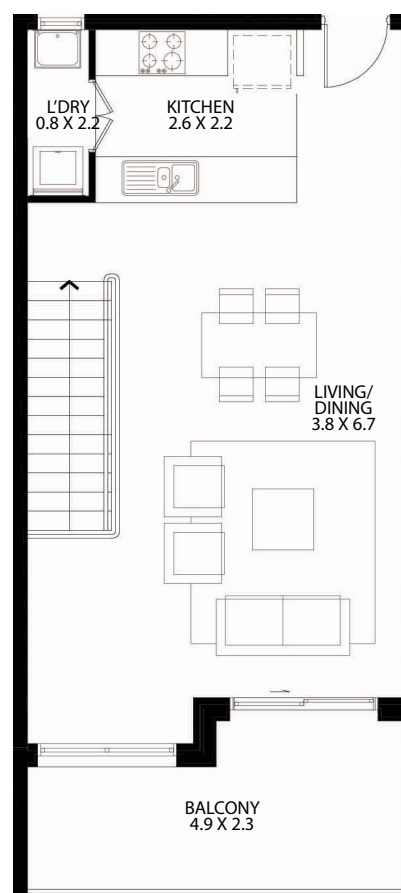
UNIT LOCATION - LEVEL 3



3D VIEW



LOWER LEVEL



UPPER LEVEL

			LOWER LEVEL	UPPER LEVEL	BALCONY	CARPARK + STORAGE	TOTAL AREA
3	2	2	58 m ²	49 m ²	10 m ²	31 m ²	148 m ²





Western Sydney
PROPERTY GROUP

48

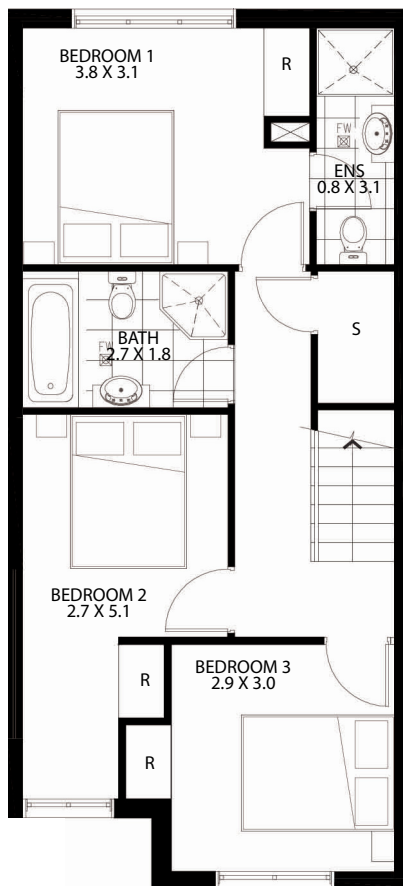
BLOCK K3, LOT 104,
DUNLOP AVE
ROPES CROSSING



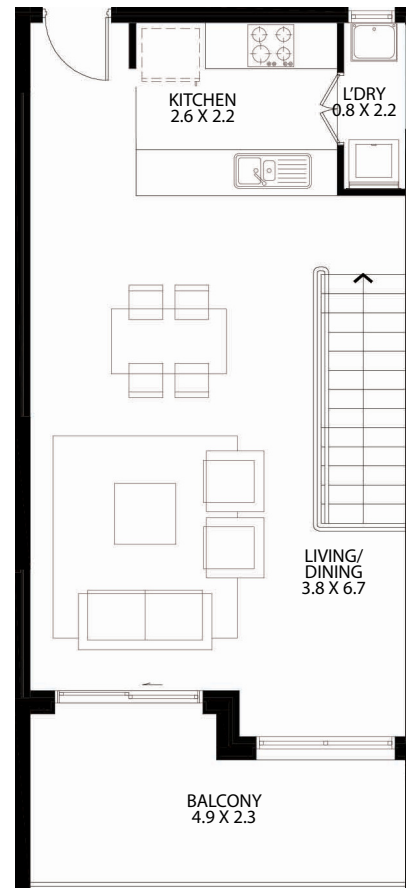
UNIT LOCATION - LEVEL 3



3D VIEW



LOWER LEVEL



UPPER LEVEL

			LOWER LEVEL	UPPER LEVEL	BALCONY	CARPARK + STORAGE	TOTAL AREA
3	2	2	58 m ²	49 m ²	10 m ²	38 m ²	45 m ²



N

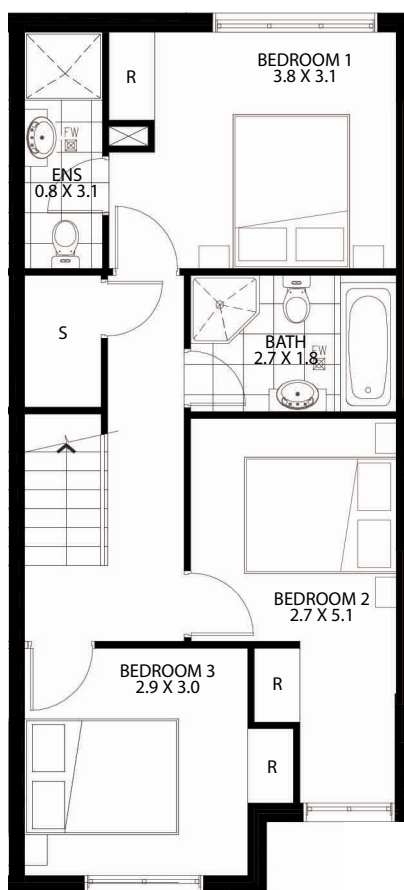
Area quoted to be used as guide only. This plan is for illustration purposes only. All information contained is gathered from sources deemed to be reliable. We have no doubt it is accurate however we cannot guarantee it. Areas are subject to final survey. Layout may change due to final council approval. The marketing plan and strata plan area will vary because of the different methods of calculation adopted. The marketing plan area is based on gross floor areas while the strata area is based on Strata Schemes (Freehold Development) Act 1973. Note: Store(S), Robe(R), bath fixtures, laundry fixtures & kitchen joinery fixtures, form part of sales package. TV and other items such as credenza, sofa, study desk, TV units & beds are not included as part of sale. Windows and doors sizes are indicative and subject to change based on legislative approval.



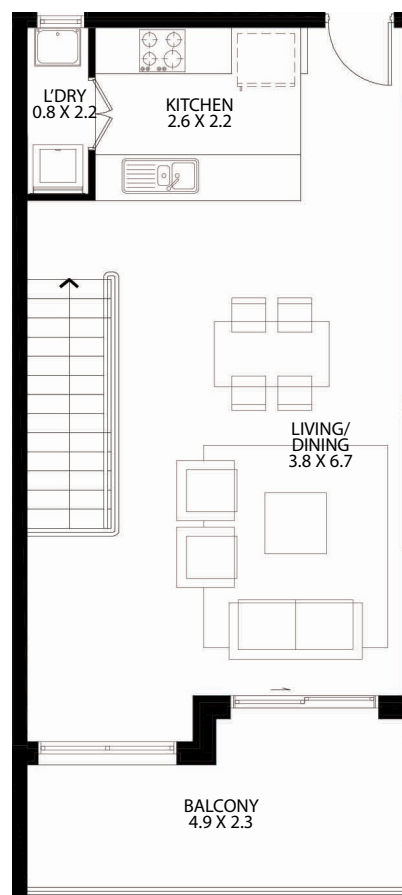
UNIT LOCATION - LEVEL 3



3D VIEW



LOWER LEVEL



UPPER LEVEL

			LOWER LEVEL	UPPER LEVEL	BALCONY	CARPARK + STORAGE	TOTAL AREA
3	2	1	58 m ²	49 m ²	10 m ²	16 m ²	133 m ²





Western Sydney
PROPERTY GROUP

50

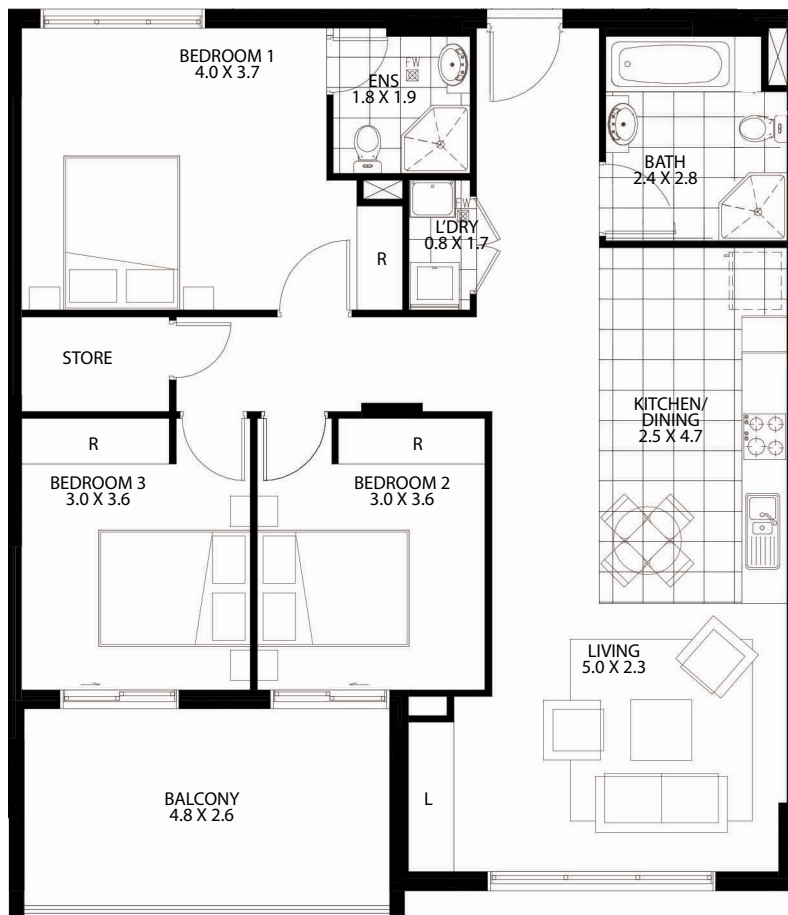
BLOCK K3, LOT 104,
DUNLOP AVE
ROPES CROSSING



UNIT LOCATION - LEVEL 2



3D VIEW



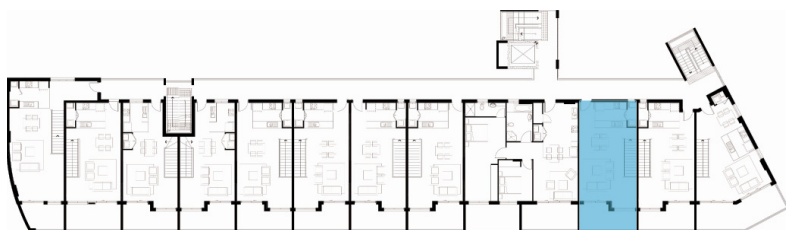
FLOOR PLAN

			LIVING AREA	BALCONY	CARPARK	TOTAL AREA
3	2	2	107 m ²	14 m ²	27 m ²	148 m ²



N

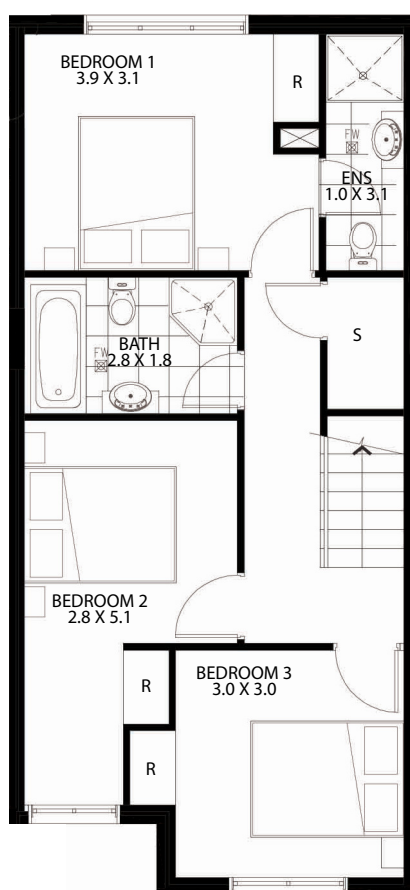
Area quoted to be used as guide only. This plan is for illustration purposes only. All information contained is gathered from sources deemed to be reliable. We have no doubt it is accurate however we cannot guarantee it. Areas are subject to final survey. Layout may change due to final council approval. The marketing plan and strata plan area will vary because of the different methods of calculation adopted. The marketing plan area is based on gross floor areas while the strata area is based on Strata Schemes (Freehold Development) Act 1973. Note: Store(S), Robe(R), bath fixtures, laundry fixtures & kitchen joinery fixtures, form part of sales package. TV and other items such as credenza, sofa, study desk, TV units & beds are not included as part of sale. Windows and doors sizes are indicative and subject to change based on legislative approval.



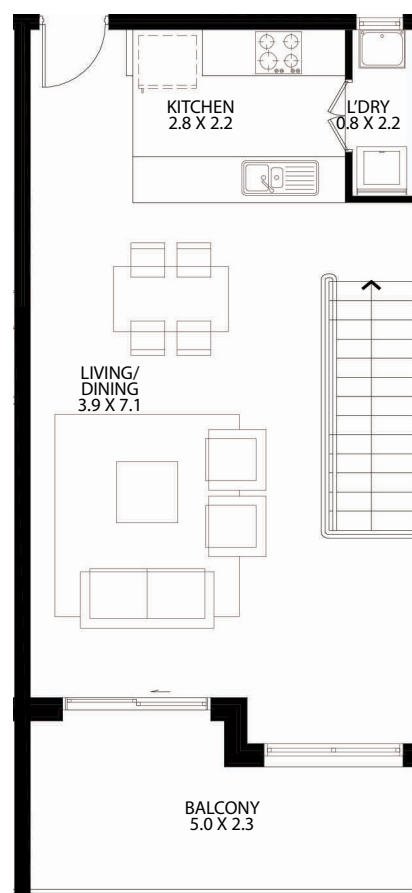
UNIT LOCATION - LEVEL 3






3D VIEW



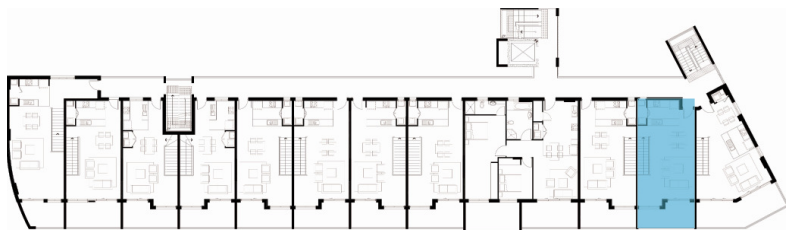
LOWER LEVEL



UPPER LEVEL

			LOWER LEVEL	UPPER LEVEL	BALCONY	CARPARK + STORAGE	TOTAL AREA
3	2	2	59 m ²	50 m ²	11 m ²	27 m ²	147 m ²

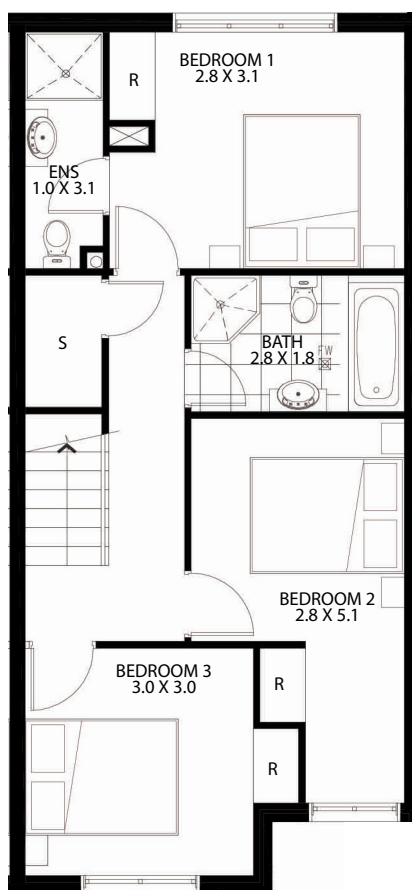




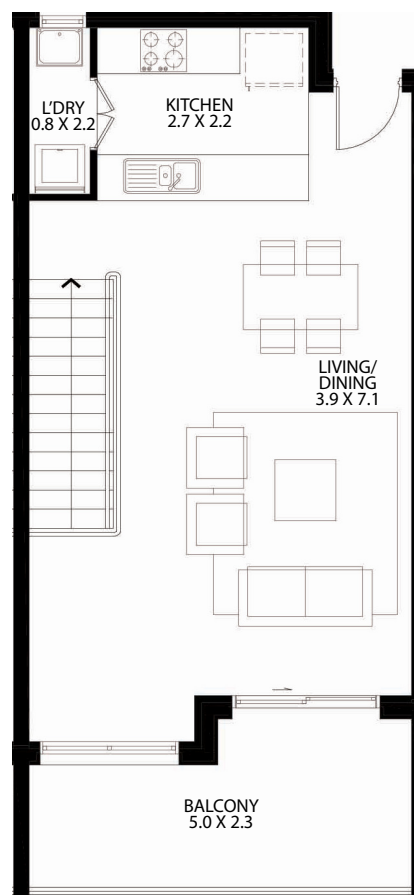
UNIT LOCATION - LEVEL 3






3D VIEW



LOWER LEVEL



UPPER LEVEL

			LOWER LEVEL	UPPER LEVEL	BALCONY	CARPARK + STORAGE	TOTAL AREA
3	2	2	59 m ²	49 m ²	11 m ²	32 m ²	151 m ²

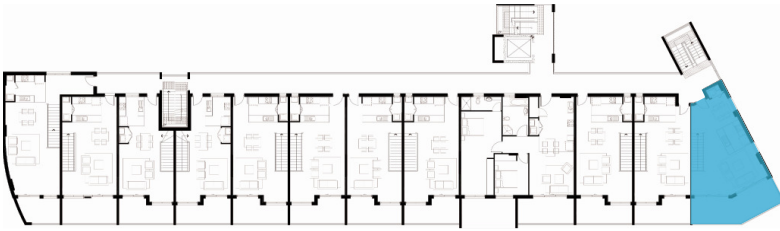




Western Sydney
PROPERTY GROUP

53

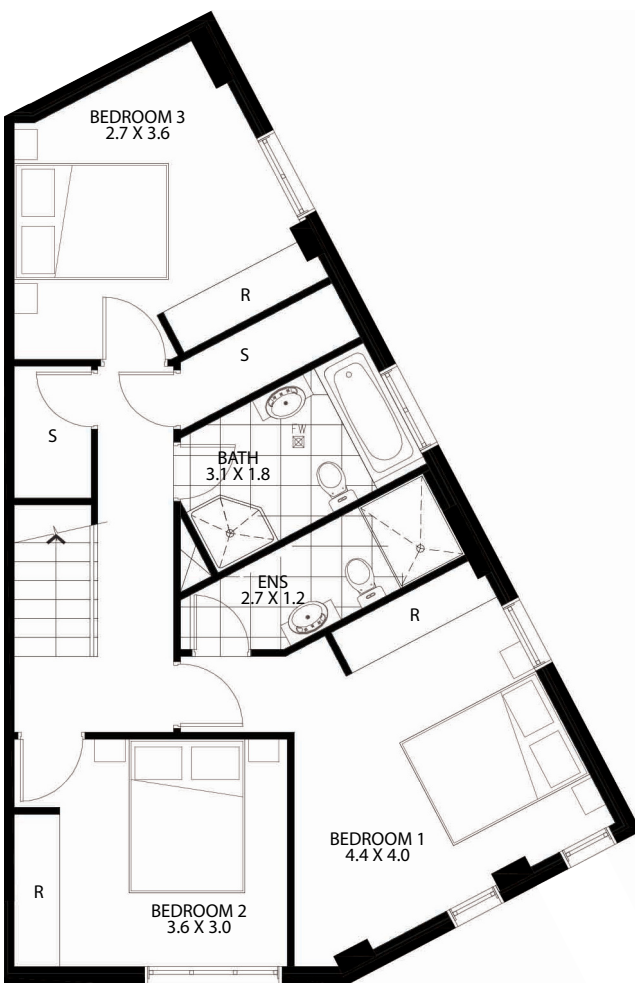
BLOCK K3, LOT 104,
DUNLOP AVE
ROPES CROSSING



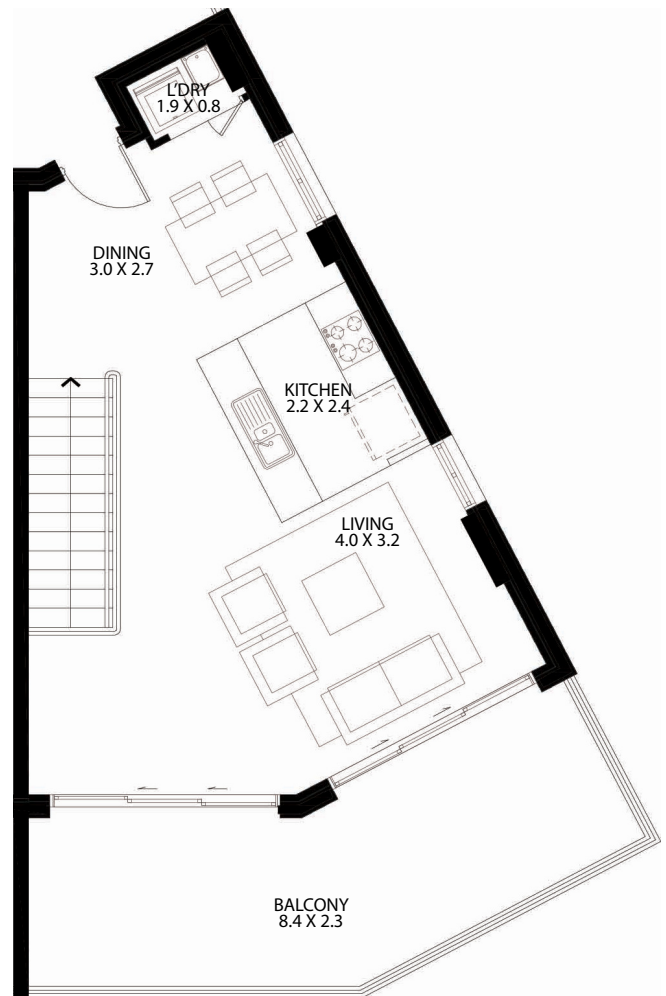
UNIT LOCATION - LEVEL 3



3D VIEW



LOWER LEVEL



UPPER LEVEL

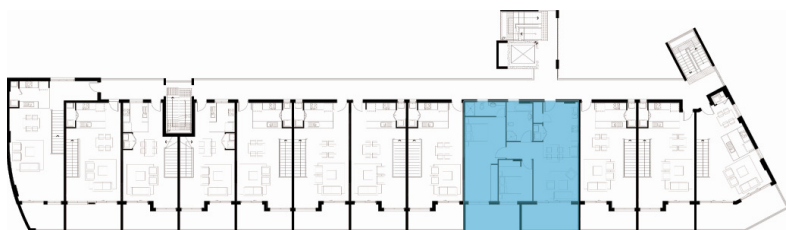
			LOWER LEVEL	UPPER LEVEL	BALCONY	CARPARK	TOTAL AREA
3	2	2	71	51 m ²	20 m ²	27 m ²	169 m ²



N

Area quoted to be used as guide only. This plan is for illustration purposes only. All information contained is gathered from sources deemed to be reliable. We have no doubt it is accurate however we cannot guarantee it. Areas are subject to final survey. Layout may change due to final council approval. The marketing plan and strata plan area will vary because of the different methods of calculation adopted. The marketing plan area is based on gross floor areas while the strata area is based on Strata Schemes (Freehold Development) Act 1973. Note: Store(S), Robe(R), bath fixtures, laundry fixtures & kitchen joinery fixtures, form part of sales package. TV and other items such as credenza, sofa, study desk, TV units & beds are not included as part of sale. Windows and doors sizes are indicative and subject to change based on legislative approval.

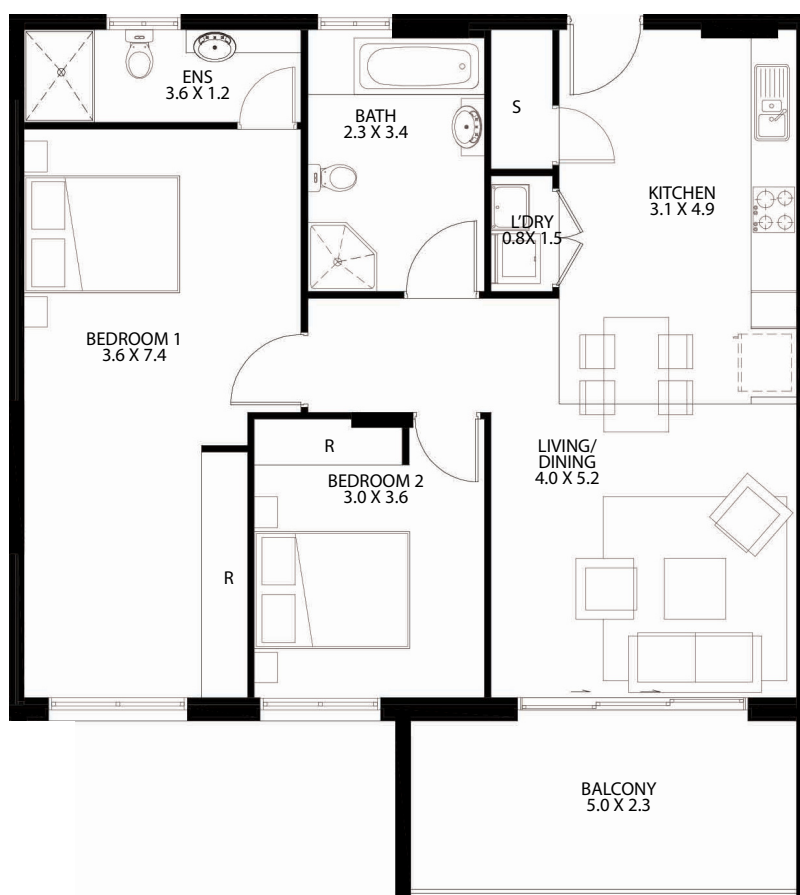
CC - R02 08/07/2015 KM



UNIT LOCATION - LEVEL 3



3D VIEW



FLOOR PLAN

			LIVING AREA	BALCONY	CARPARK	TOTAL AREA
3	2	2	96 m ²	13 m ²	27 m ²	136 m ²



N

Area quoted to be used as guide only. This plan is for illustration purposes only. All information contained is gathered from sources deemed to be reliable. We have no doubt it is accurate however we cannot guarantee it. Areas are subject to final survey. Layout may change due to final council approval. The marketing plan and strata plan area will vary because of the different methods of calculation adopted. The marketing plan area is based on gross floor areas while the strata area is based on Strata Schemes (Freehold Development) Act 1973. Note: Store(S), Robe(R), bath fixtures, laundry fixtures & kitchen joinery fixtures, form part of sales package. TV and other items such as credenza, sofa, study desk, TV units & beds are not included as part of sale. Windows and doors sizes are indicative and subject to change based on legislative approval.