

TRIBECA

KELLYVILLE. NSW.

Lot 5 - Community Road, Kellyville , NSW 2155



ROSS PLACE
KELLYVILLE

HOUSE & LAND
\$1,119,980 FIXED PRICE

4  2.5  2  2 

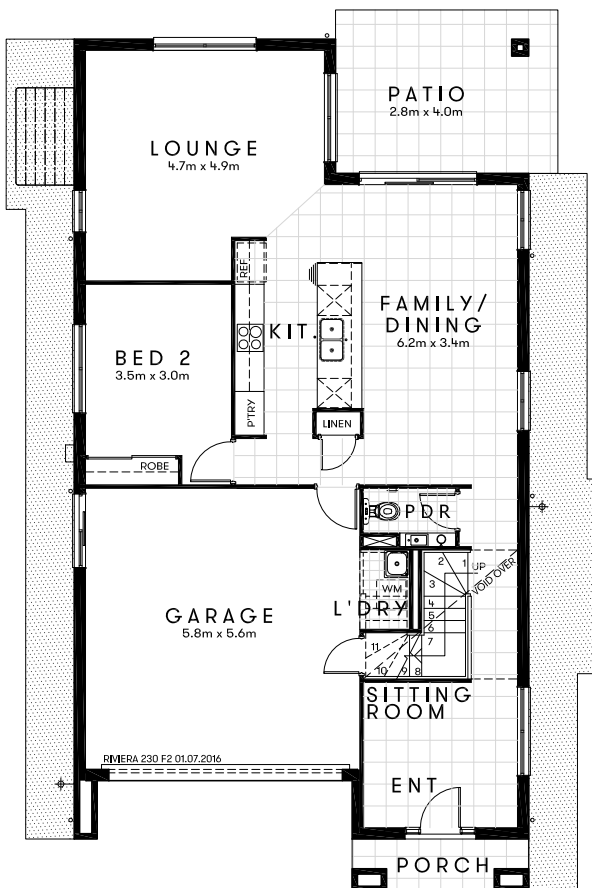
Approx. House Area 231m²
Land Area 600m²

House Price \$409,980
Land Price \$710,000

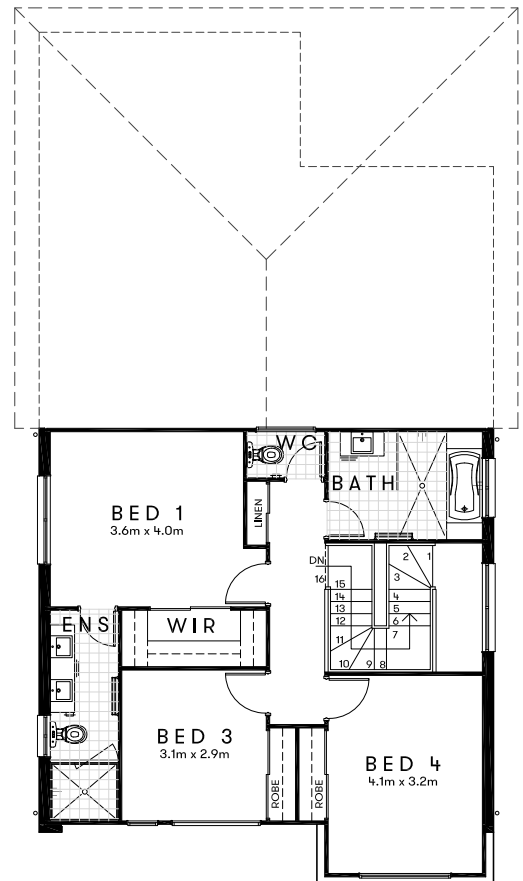
TRIBECA

Design Riviera 230 F2 Approx. House Area 231m²
Land Area 600m² House Price \$409,980 Land Price \$710,000

Free
ducted A/C for
prompt finance
approval



LOT 5



HOME OVERVIEW

Design Riviera 230 F2

Approx. House Area 231m²

Land Area 600m²

House Price \$409,980

Land Price \$710,000

QUALITY INCLUSIONS

- Fixed site costs, no surprises
- Carpeted and tiled throughout
- 2590mm nominal ceiling height
- Manufactured stone bench top to kitchen, bathroom & ensuite
- Quality stainless steel appliances
- Superior fittings and fixtures
- Fly screens & security screens to external doors
- Blinds throughout
- Covered alfresco
- Turfed & Landscaped
- Driveway & pathways
- Fully fenced
- Clothesline & letterbox
- Preselected colours; Interior designers have created stylish interiors

