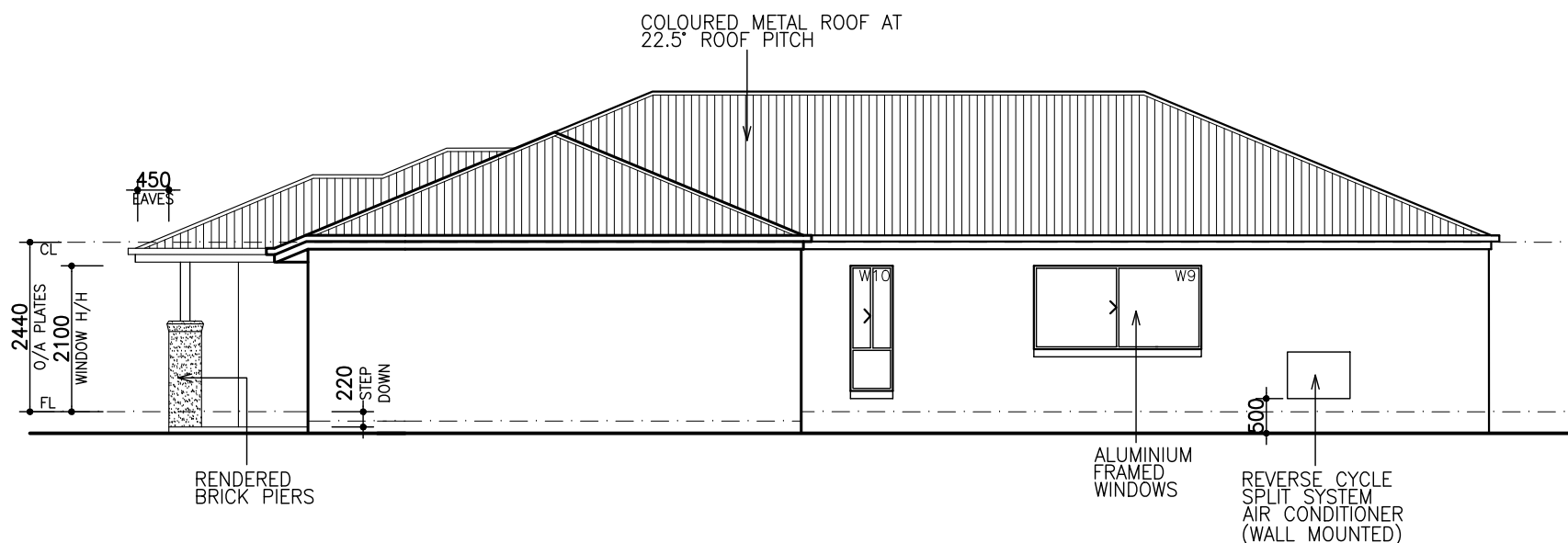
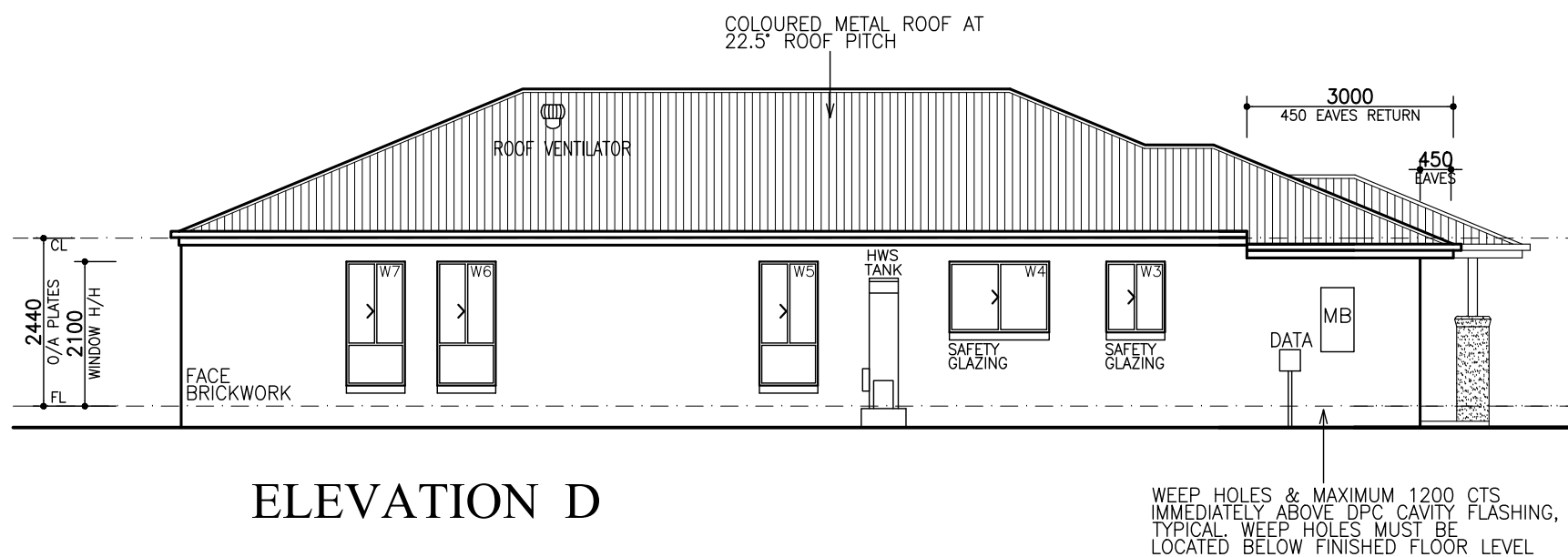


ELEVATION A



ELEVATION B



ELEVATION D

NOTE: PROVIDE BACKFILL TO ALL EXTERNAL OPENINGS TO PROVIDE A 190mm MAX. STEP UP INTO HOUSE AS PER BCA REQUIREMENTS

GENERAL NOTES:

- * TIMBER FRAMING FOR WALL AND ROOF TRUSSES TO MANUFACTURERS SPECIFICATIONS.
- * EXPANSION JOINTS ARE TO BE PROVIDED IN ACCORDANCE WITH ENGINEERS SPEC'S.
- * WINDOW SASH LOCATION AND GLAZING BAR CONFIGURATION TO MANUFACTURERS SPEC'S.
- * ALL BRICKWORK HEIGHTS DIMENSIONED FROM HOUSE OR GARAGE FLOOR LEVEL ARE NOMINAL

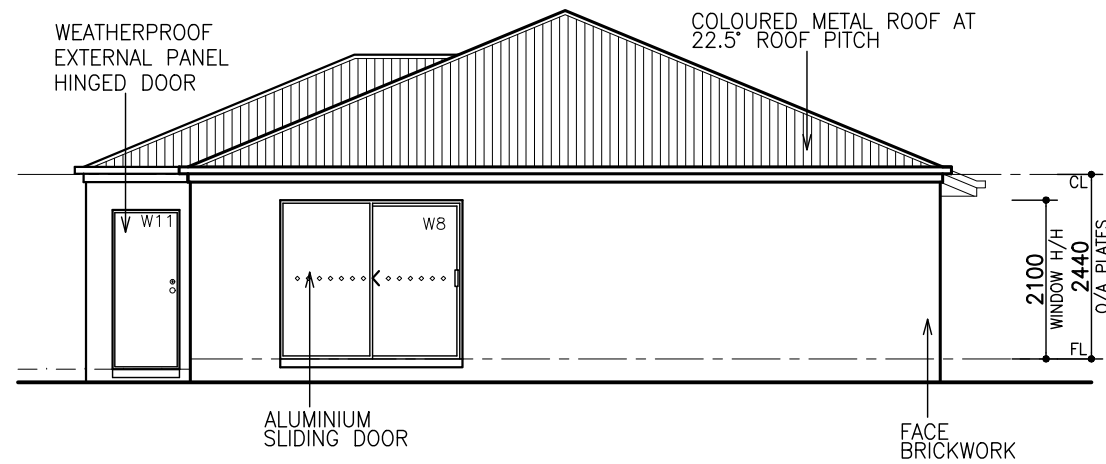
FALCON 2012F NOTION



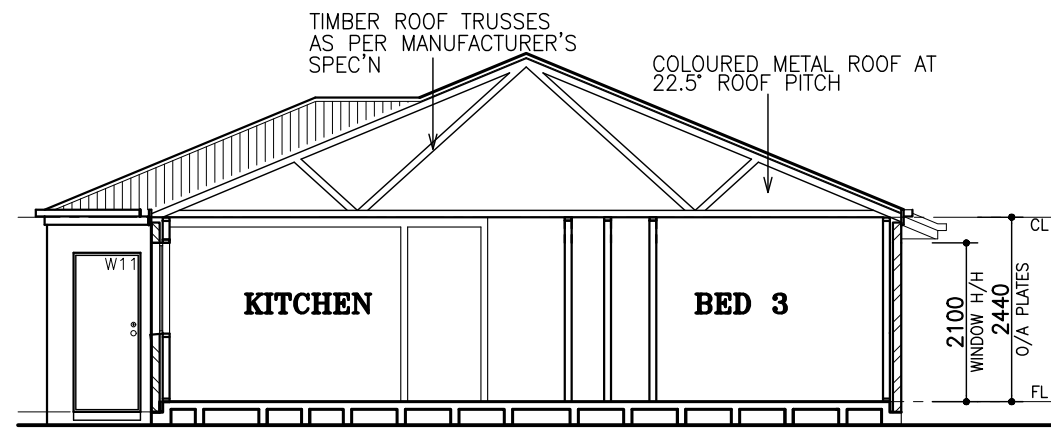
Level 8, 30 Convention Place
Southwharf Vic 3006
ph: 03 8595 8300

ELEVATIONS
SCALE - 1:100

CLIENT/CLIENT
ADDRESS1/ADDRESS1
ADDRESS2
JOB NO: WHVXXXXX
XX/XX/2017 V-1



ELEVATION C



CONCRETE SLAB TO ENGINEERS DESIGN
SECTION X-X

NOTE: PROVIDE BACKFILL TO ALL EXTERNAL OPENINGS TO PROVIDE A 190mm MAX. STEP UP INTO HOUSE AS PER BCA REQUIREMENTS

GENERAL NOTES:

- * **TIMBER FRAMING FOR WALL AND ROOF TRUSSES** TO MANUFACTURERS SPECIFICATIONS.
- * EXPANSION JOINTS ARE TO BE PROVIDED IN ACCORDANCE WITH ENGINEERS SPEC'S.
- * WINDOW SASH LOCATION AND GLAZING BAR CONFIGURATION TO MANUFACTURERS SPEC'S.
- * ALL BRICKWORK HEIGHTS DIMENSIONED FROM HOUSE OR GARAGE FLOOR LEVEL ARE NOMINAL

DOWELL WINDOWS & DOORS	STANDARD		DOUBLE GLAZED	
	Uw	SHGC	Uw	SHGC
ALUMINIUM SLIDING WINDOWS	6.4	0.75	4.2	0.62
ALUMINIUM SLIDING DOOR	6.2	0.71	4.2	0.59
ALUMINIUM BI-FOLD DOOR	6.1	0.62	4.1	0.54
ALUMINIUM FIXED	6.2	0.75	3.6	0.66
ALUMINIUM AWNING	6.5	0.61	3.9	0.58
TIMBER AWNING	4.5	0.54	2.6	0.47
TIMBER BI-FOLD	4.1	0.52	2.6	0.45
TIMBER SLIDING	4.9	0.66	2.7	0.57

STANDARD INCLUSIONS FOR ENERGY EFFICIENCY REQUIREMENTS:

- AIRFLOW DRAFT STOPPERS TO EXHAUST FANS
- ALUMINIUM IMPROVED WINDOWS THROUGHOUT
- DOOR SEALS TO EXTERNAL AND UTILITY DOORS
- SEALS AROUND ALL EXTERNAL WINDOWS AND DOORS
- R 2.0 GLASSWOOL BATTS TO EXT. WALLS OF DWELLING
- R 4.0 GLASSWOOL BATTS TO CEILINGS
- WALL WRAP EMITTANCE, REFLECTIVE FACE 0.03, ANTIGLARE FACE 0.1

FURTHER INCLUSIONS REQUIRED TO ACHIEVE 6 STAR ENERGY RATING TO BE CONFIRMED UPON RECEIPT OF APPROVED REPORT FROM ACCREDITED ENERGY RATER

NOTE:
PROVIDE INSULATION TO EXTERNAL WALLS, WALL BETWEEN GARAGE & HOUSE & CEILING DIRECTLY UNDER ROOF SPACE. EXCLUDES INSULATION TO GARAGE CEILING SPACE & GARAGE EXTERNAL WALLS

FALCON 2012F
NOTION



Level 8, 30 Convention Place
Southwharf Vic 3006
ph: 03 8595 8300

ELEVATIONS
SCALE - 1:100

CLIENTCLIENT
ADDRESS1ADDRESS1

ADDRESS2
JOB NO: WHVXXXXX
XX/XX/2017 V-1

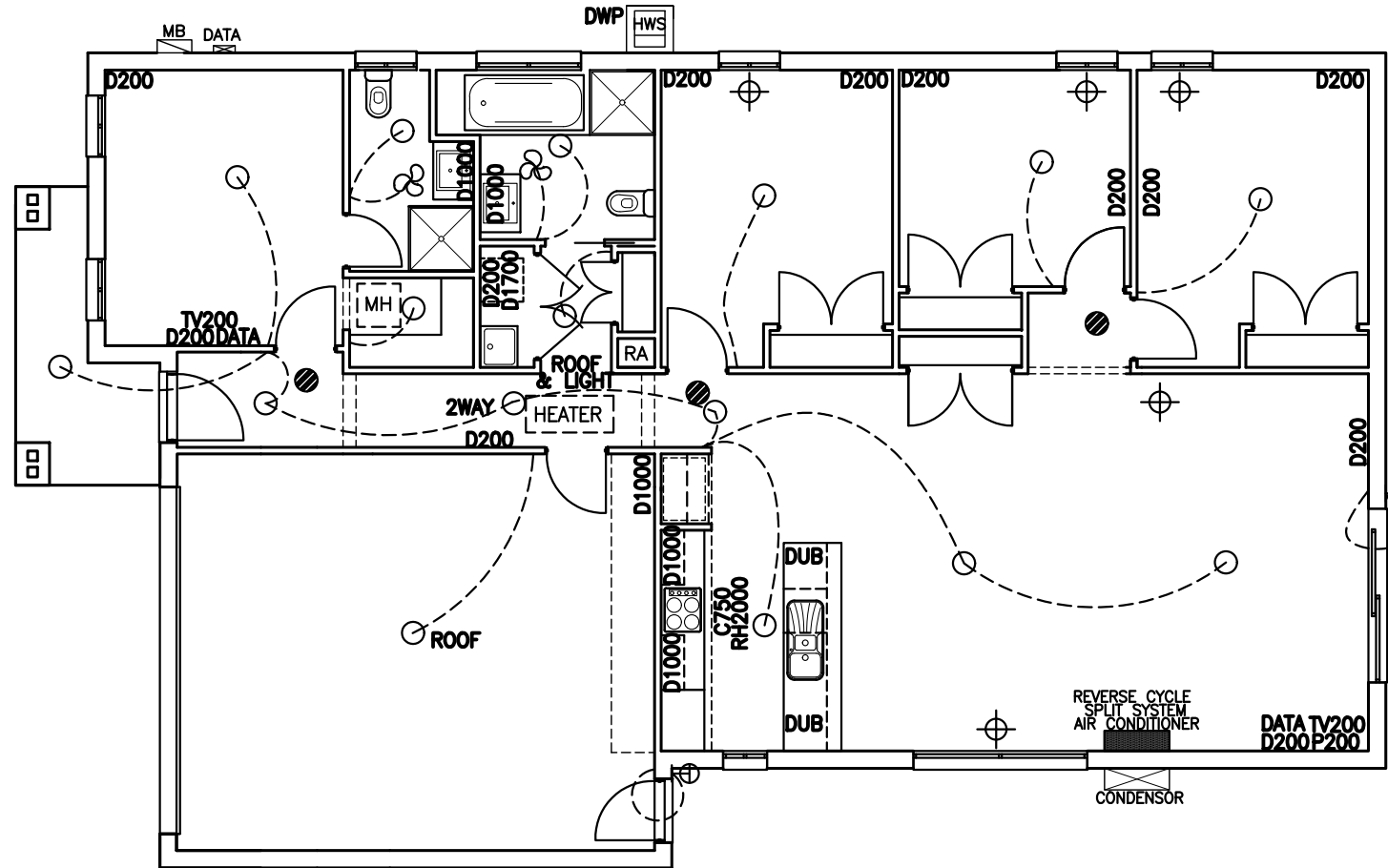
SMOKE DETECTOR

- CONNECTED TO MAINS POWER & HAVING A STANDBY POWER SUPPLY (IN ACCORDANCE WITH AS3786-1993)
- SMOKE DETECTORS ARE INTERCONNECTED AS PER THE REQUIREMENTS OF THE NCC 2015

HEATING AND COOLING DUCTWORK

DUCTWORK FOR HEATING & COOLING SYSTEMS SHALL COMPLY WITH A.S. 4254 & A.S./N.Z.S. 4859.1- IN ACCORDANCE WITH BCA TABLE FOR CLIMATE ZONE REQUIREMENTS

HEATING & COOLING REGISTER LOCATIONS ARE INDICATIVE (CLOSE) AND THAT ACTUAL LOCATIONS TO BE DETERMINED BY THE INSTALLER/ MANUFACTURER FOR BEST RESULTS



GENERAL NOTES & ELECTRICAL LEGEND

- * TOP OF METER-BOX TO BE 1950MM MAXIMUM ABOVE GROUND LEVEL.
- * LIGHT SWITCHES TO BE WALL PLATES AT 1200MM ABOVE FLOOR.
- * HEIGHTS MEASURED FROM FLOOR LEVEL UNLESS OTHERWISE NOTED.
- * UNLESS OTHERWISE DIMENSIONED ALL POWER POINTS ARE TO BE LOCATED TO NEAREST STUD
- * LIGHT POINT & SINGLE POWER POINT TO ROOF SPACE, AT MANHOLE LOCATION
- * PROVIDE AN ISOLATION SWITCH ON A SEPARATE CIRCUIT FOR HEAT PUMPS TO ELECTRICAL HOT WATER SERVICE (ONLY WHEN A SOLAR HOT WATER UNIT IS NOT BEING PROVIDED)

- RA - RETURN AIR
- MH - ROOF ACCESS (MAN HOLE)
- RH2000 - POWER POINT AT 2000MM R/HOOD
- ROOF - POWER POINT IN ROOF
- D200 - DOUBLE POWER POINT AT 200MM
- C750 - POWER POINT AT 750MM OVEN/COOKER
- D1000 - DOUBLE POWER POINT AT 1000MM
- D1400 - DOUBLE POWER POINT AT 1400MM
- D1700 - DOUBLE POWER POINT AT 1700MM
- D2000 - DOUBLE POWER POINT AT 2000MM
- DWP - DOUBLE POWER POINT WATER PROOF
- DUB - DOUBLE POWER POINT UNDER BENCH
- TV200 - TV POINT AT 200MM
- P1400 - PHONE POINT AT 1400MM
- IS - ISOLATION SWITCH (SEPARATE CIRCUIT)
- - SMOKE ALARM
- - EXHAUST FAN
- - CEILING LIGHT OUTLET
- - DOWN LIGHT
- - EXTERNAL LIGHT AT 1900
- - DUCTED HEATING CEILING REGISTER
- HEATER - ROOF MOUNTED GAS HEATED LOCATION

FALCON 2012F
NOTION
TRIUMPH SPEC



Level 8, 30 Convention Place
Southwharf Vic 3006
ph: 03 8595 8300

ELECTRICAL PLAN
SCALE - 1:100

CLIENT/CLIENT
ADDRESS1/ADDRESS1
ADDRESS2
JOB NO: WHVXXXXX
XX/XX/2017 V-1

SHEET 5

ARTIFICIAL LIGHTING PROVISIONAL OF ARTIFICIAL LIGHTING IN ACCORDANCE PART 3.12.5.5 OF THE BCA 2015

	AREA:	LIGHTS	ALLOWABLE WATTS PER LIGHT.	ACTUAL WATTS PER LIGHT.
DWELLING - MAX 5W/M2	143.0 sqm	14	51.1W	12.0W & 14.0W
PORCH - MAX 4W/M2	5.8 sqm	1	23.2W	14.0W
GARAGE - MAX 3W/M2	39.7 sqm	1	119.1W	14.0W

14 WATT BATTEN LIGHTS: TO INSIDE AND UNDERCOVER AREAS
12 WATT DOWNLIGHTS