

# SINGLE STOREY COLLECTION

PERIDOT 19

PERIDOT 19 CLASSIC



PERIDOT 19 TREND



Designed with the best in mind for a narrowlot.  
Peridot 19 is perfect for those still wanting a  
spacioushome packed with personality and style.  
With four-bedroom, open plan living and dining.

# PERIDOT 19



GROUND FLOOR

## Floor Areas

Fits Wide :	10 m
Ground Floor:	143 sqm
Alfresco:	12 sqm
Garage:	19 sqm
Total Floor Area:	174 sqm

# SINGLE STOREY COLLECTION

EMERALD 19

PERIDOT 19 CLASSIC

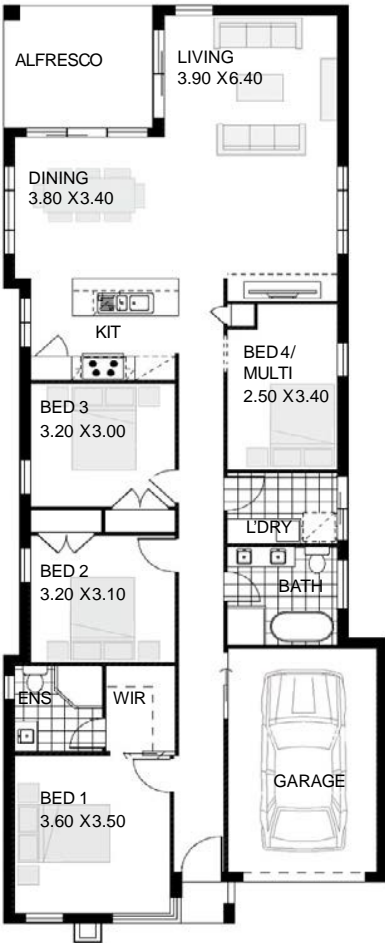


PERIDOT 19 TREND



Designed with the best in mind for a narrow lot. Emerald 19 is perfect for those still wanting a spacious home packed with personality and style. With four-bedroom, open plan living and dining.

# EMERALD 19



## Floor Areas

Fits Wide :	10 m
Ground Floor:	144 sqm
Alfresco:	11 sqm
Garage:	20 sqm
Total Floor Area:	175 sqm

GROUND FLOOR

SAPPHIRE CLASSIC



# DOUBLE STOREY COLLECTION

SAPPHIRE 23




This spacious four-bedroom home takes a deep impression on your family and friends. Sapphire is an open plan living and dining area.

SAPPHIRE TREND





# SAPPHIRE 23

 4
  2.5
  1/2



GROUND FLOOR



FIRST FLOOR

## Single Garage - Floor Areas

Fits Wide :	10 m
Ground Floor:	92 sqm
First Floor:	81 sqm
Alfresco:	10 sqm
Single Garage:	21 sqm
Total Floor Area:	204 sqm

## Double Garage - Floor Areas

Fits Wide :	12.5 m
Ground Floor:	92 sqm
First Floor:	81 sqm
Alfresco:	10 sqm
Double Garage:	34 sqm
Total Floor Area:	217 sqm

# DOUBLE STOREY COLLECTION




RUBY 25

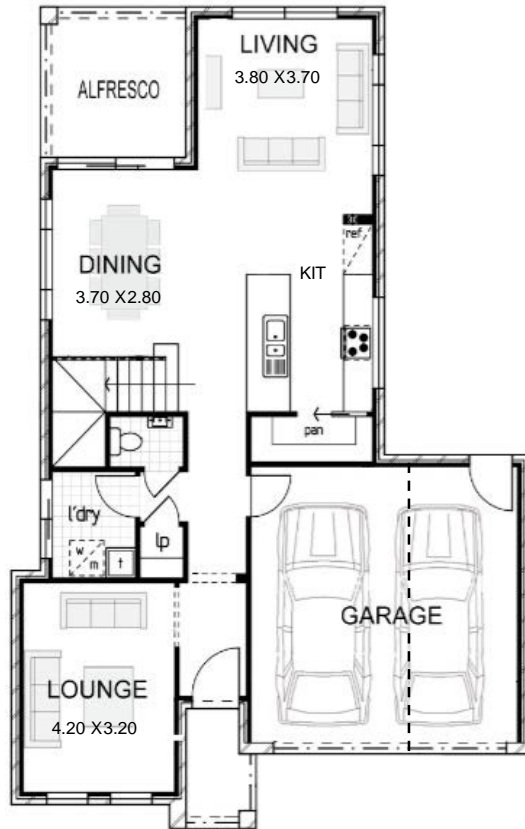
Modern and chic would be the best way to describe the Ruby 25. With large open living area, this four-bedroom home offers the good contemporary design with functional appeal.

RUBY 25 CLASSIC

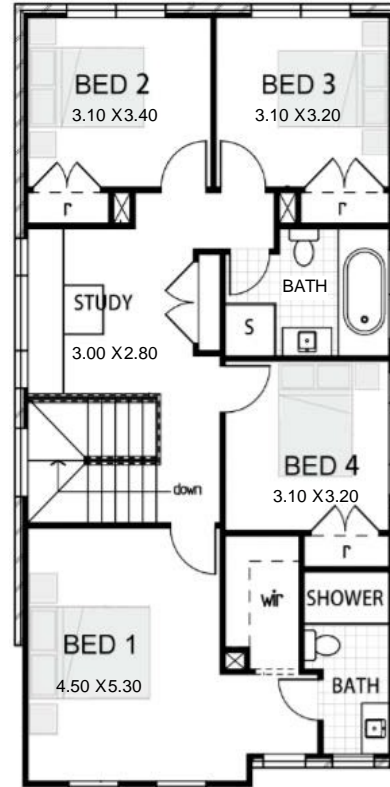


# RUBY 25

 4
  2.5
  1 / 2



GROUND FLOOR



FIRST FLOOR

## Single Garage - Floor Areas

Fits Wide :	10 m
Ground Floor:	89 sqm
First Floor:	97 sqm
Alfresco:	9 sqm
Single Garage:	21 sqm
<b>Total Floor Area:</b>	<b>216 sqm</b>

## Double Garage - Floor Areas

Fits Wide :	12.5 m
Ground Floor:	89 sqm
First Floor:	97 sqm
Alfresco:	9 sqm
Double Garage:	34 sqm
<b>Total Floor Area:</b>	<b>229 sqm</b>



SAPPHIRE 22 CLASSIC



# DOUBLE STOREY COLLECTION

## SAPPHIRE 22

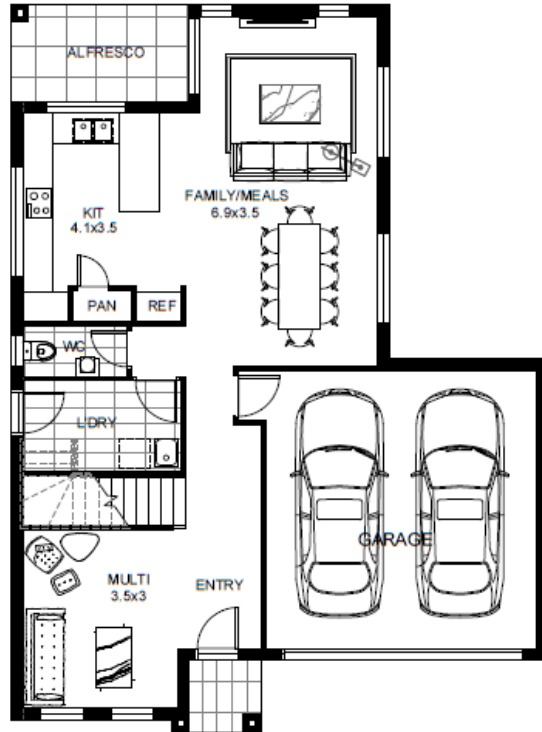
This spacious four-bedroom home takes a deep impression on your family and friends. Sapphire is an open plan living and dining area.

SAPPHIRE 22 TREND

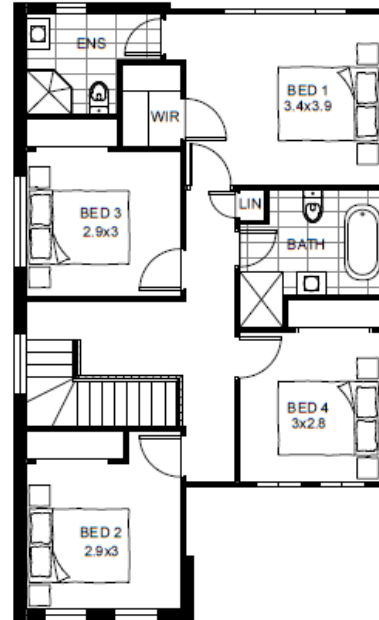


# SAPPHIRE 22

 4  2.5  2



GROUND FLOOR



FIRST FLOOR

## Double Garage - Floor Areas

Fits Wide :	12.5 m
Ground Floor:	83 sqm
First Floor:	81 sqm
Alfresco:	7 sqm
Double Garage:	34 sqm
Total Floor Area:	205 sqm

AMBER 25 CORNER



# DOUBLE STOREY COLLECTION

AMBER 25

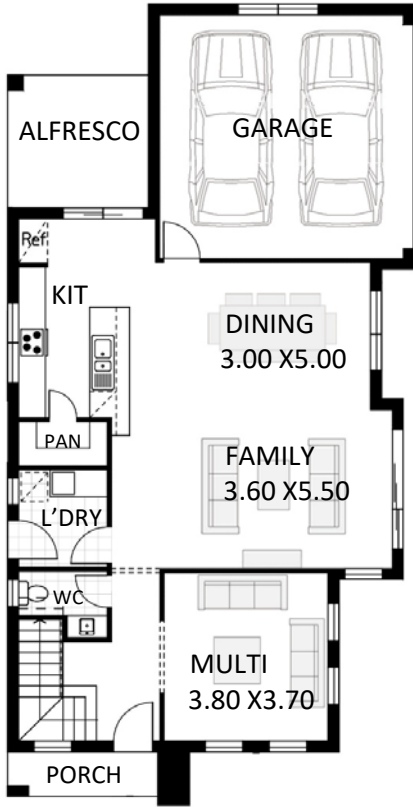
Quaint and cozy on the outside with porch and alfresco, this four-bedroom home surprises with an open kitchen, large dining and family area. A side entry garage suits this attractive double storey house plan for a corner lot.

AMBER 25 CORNER

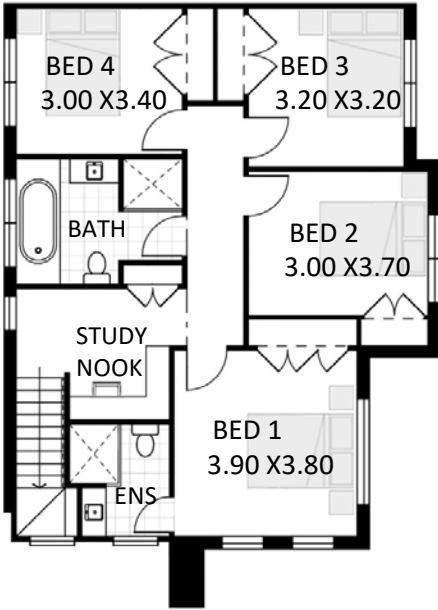


# AMBER 25

 4
  2.5
  2



GROUND FLOOR



FIRST FLOOR

## Double Garage - Floor Areas

Fits:	Corner Lot
Ground Floor:	98 sqm
First Floor:	93 sqm
Alfresco:	10 sqm
Double Garage:	34 sqm
Total Floor Area:	235 sqm



WALNUT CLASSIC



# DOUBLE STOREY COLLECTION

WALNUT

Walnut with an open plan living, a separate lounge and plenty of spaces to relax. There are two options for the layout, it is perfect for large families.

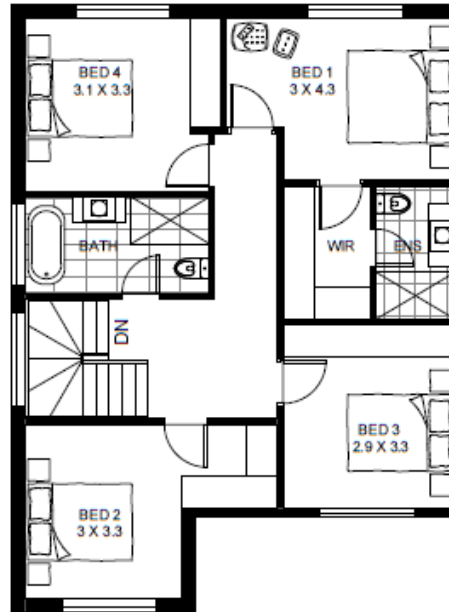
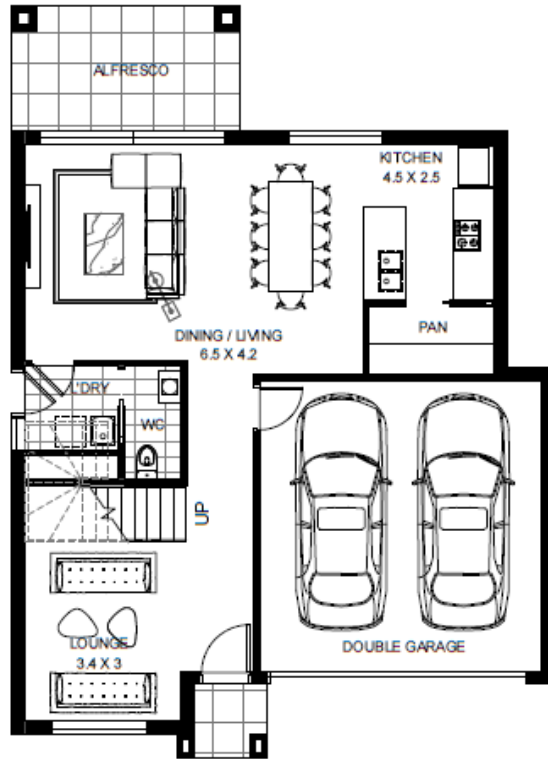
WALNUT TREND





# WALNUT 23

 4  2.5  2



## Double Garage - Floor Areas

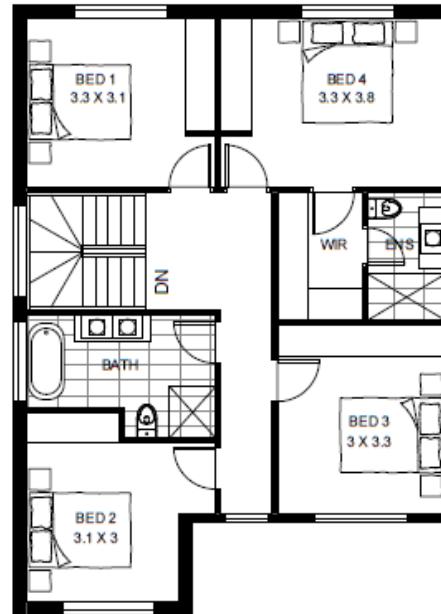
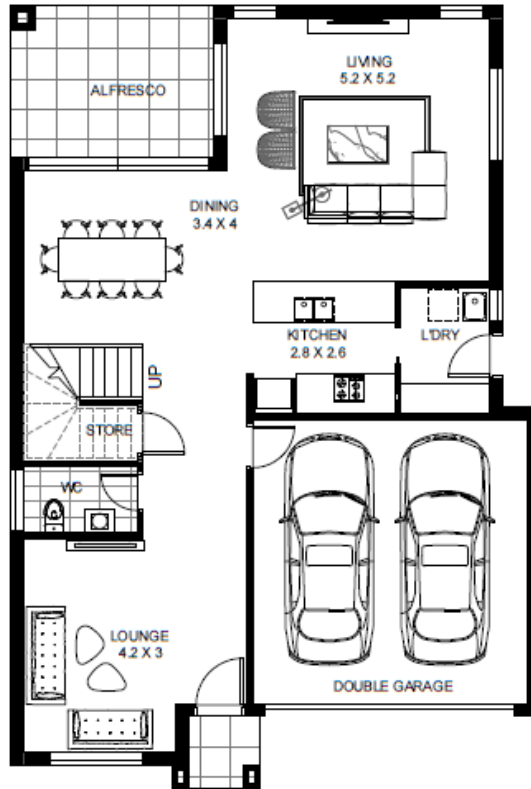
Fits Wide :	12.5 m
Ground Floor:	77 sqm
First Floor:	91 sqm
Alfresco:	10 sqm
Double Garage:	33 sqm
Total Floor Area:	211 sqm

# WALNUT 26 OPTION 1

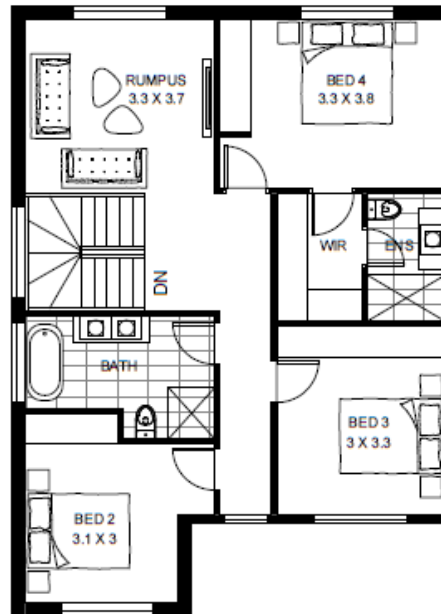
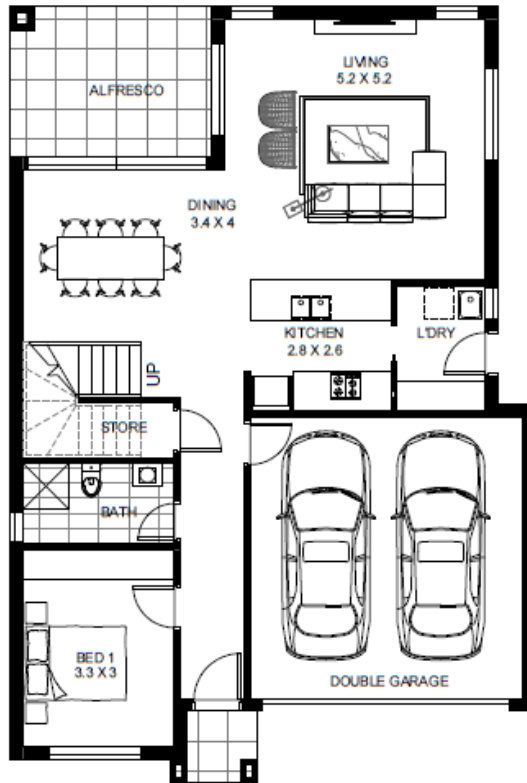
 4  2.5  2

## Double Garage - Floor Areas

Fits Wide :	12.5 m
Ground Floor:	98 sqm
First Floor:	94 sqm
Alfresco:	12 sqm
Double Garage:	33 sqm
Total Floor Area:	237 sqm



# WALNUT 26 OPTION 2



## Double Garage - Floor Areas

Fits Wide :	12.5 m
Ground Floor:	98 sqm
First Floor:	94 sqm
Alfresco:	12 sqm
Double Garage:	33 sqm
Total Floor Area:	237 sqm