



Front Landscaping Package

OLIVIA



A focal point of Olivia's master plan will be its beautiful landscaped open space areas, with purchasers having the luxury to enjoy one within a short walking distance.

To ensure high landscape standards are maintained at Olivia, all residents will be provided with a front garden they can be proud of. The Olivia Landscape Team has designed three beautiful front gardens, and all purchasers will be given the opportunity to have one garden complimentary installed upon completion of their house.

Whether you are looking for something of low maintenance, a garden of more contemporary style or a front garden that represents Australia's native landscape, we have catered for all.

Purchasers are required to select one of the three front gardens for the Front Landscaping Package in the Contract of Sale. This selection will not be able to be changed unless approved by the Olivia Administration Team.

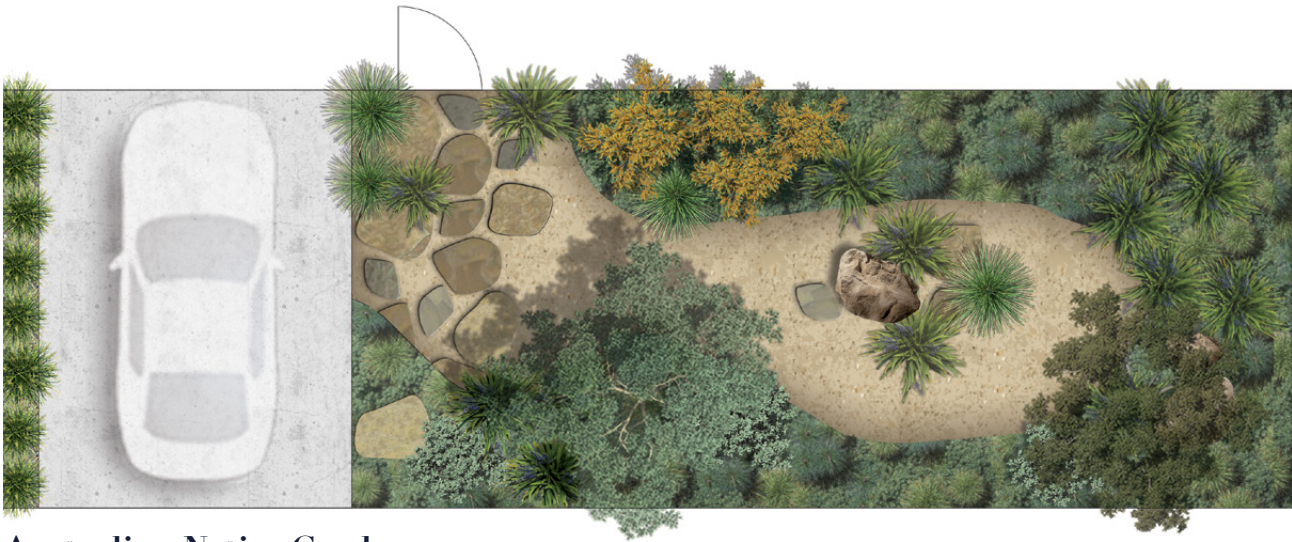
The Front Landscaping Package is strictly subject to the following conditions:

- 1.** The Front Landscaping Package offer is only valid for 24 months from the date of settlement.
- 2.** The construction of the Purchaser's driveway and letterbox are not included in the Front Landscaping Package. It is the Purchaser's responsibility to construct the driveway and install the letterbox prior to the commencement of the Landscape Works.
- 3.** When the Landscaping Works have been completed, it will be the sole responsibility of the Purchaser to maintain their front garden, including the replacement of any part of the front garden.
- 4.** The Front Landscaping Package offer is strictly personal to the Purchaser and cannot be transferred to any other party (including any subsequent purchaser of the Property).

If the above criteria have been satisfied, please contact the Olivia Administration Team and provide a copy of your Certificate of Occupancy at info@oliviaestate.com.au

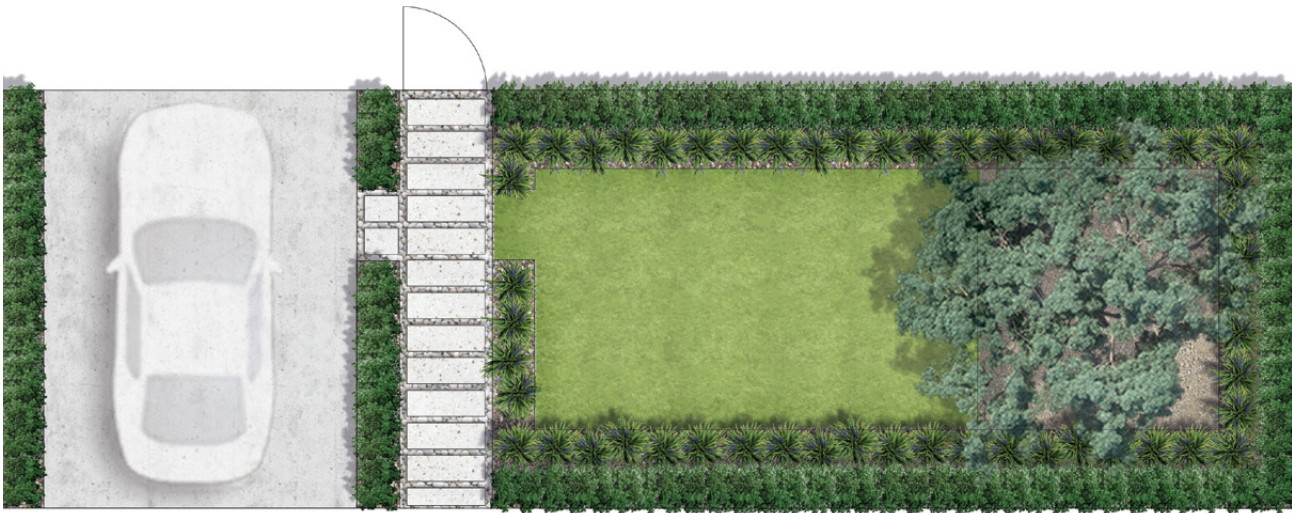
OUR LANDSCAPING TEAM HAS METICULOUSLY DESIGNED THE FOLLOWING THREE FRONT GARDENS TO BOTH ACCOMMODATE THE LOCAL CLIMATE AND GROUND CONDITIONS, AND UPHOLD THE BEAUTIFUL AESTHETIC STANDARDS OF THE ESTATE.





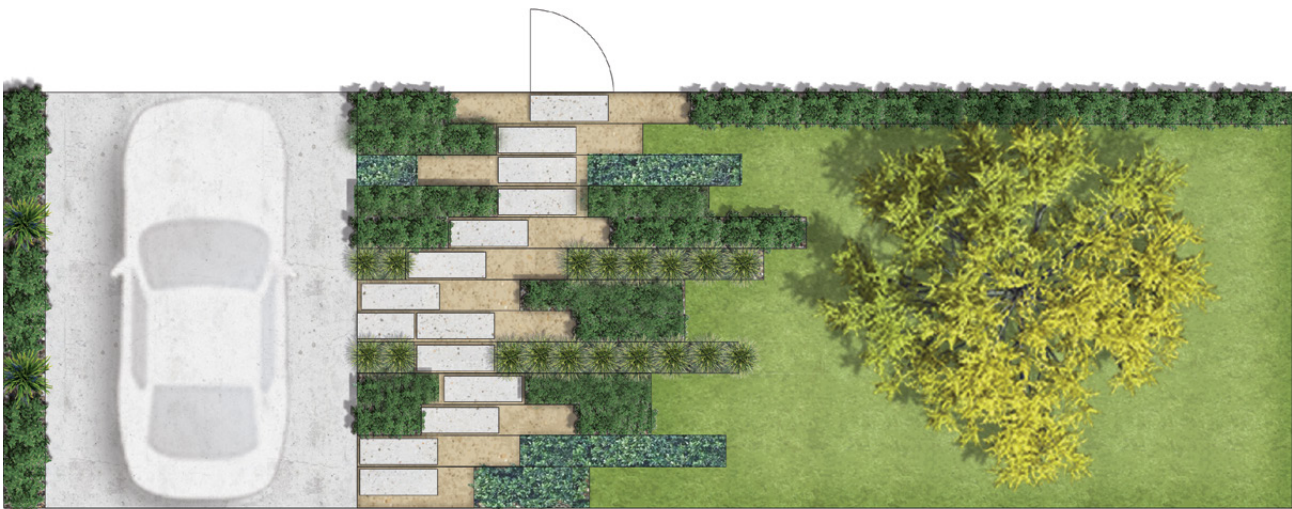
Australian Native Garden

As the name suggests, this garden is all about Australian native plant species. A beautiful path will lead you to a feature tree and wonderfully designed garden beds full of some of Australia's most recognisable plant species.



European Garden

Paying homage to the olive groves which once covered the fields of Olivia, the European Garden is a striking design which uses neat lines of planting to surround a beautiful feature tree.



Contemporary Garden

Starting with an intricately designed path that weaves towards your front door, this garden uses different shapes and angles to offer a unique appearance. Carefully placed garden beds provide interest to the turfed area which holds a stunning feature tree.



GARDEN DESIGN 1: **European**

The start of something beautiful

OLIVIA



GARDEN DESIGN 2: **Contemporary**

The start of something beautiful





GARDEN DESIGN 3: **Australian Native**

The start of something beautiful

OLIVIA



The start of something beautiful

OLIVIA

www.oliviaestate.com.au

marantali

Sketches, diagrams and images representing proposed landscaping options in this document are for illustrative purposes only and may not necessarily depict the actual final landscaping layout. Areas and dimensions are subject to survey. This marketing publication is subject to change from time to time. Prospective purchasers should make their own enquiries and seek independent legal advice prior to purchase.