

[illegible]









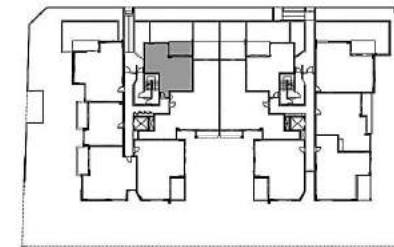








## Apartment



### Unit G05



Level : Ground floor

Internal : 52.38m<sup>2</sup>

External : 36.36m<sup>2</sup>

Total area : 88.74m<sup>2</sup>

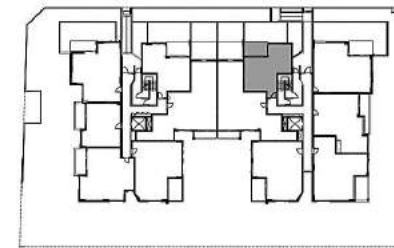


N





## Apartment



### Unit G08



Level : Ground floor

Internal : 52.29m<sup>2</sup>

External : 36.77m<sup>2</sup>

Total area : 89.06m<sup>2</sup>



N

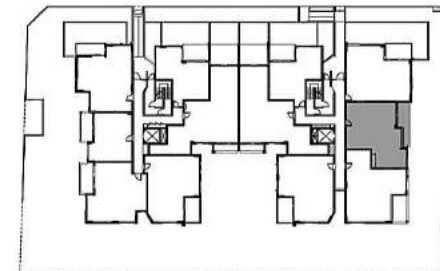
0 1 2 4m

Disclaimer the information and illustrations in this plan are indicative only and are subject to change. Walker Street Developments Pty Limited and its related entities or corporations (including the landowner) and their agents do not warrant the accuracy of and do not accept any liability for any lot or discrepancy in the information and illustrations. Any furniture or appliances depicted (including possible furniture and appliance locations) are illustrative only, will not form part of the property sold and are not definitive of the purpose for which any area within the property can be used. The displayed information and illustrations do not form part of any contract for sale, and interested parties must rely on their own enquiries and the information in the contract for sale.





## Apartment



### Unit G10



Level : Ground floor

Internal : 76.00m<sup>2</sup>

External: 9.50m<sup>2</sup>

Total area : 85.50m<sup>2</sup>



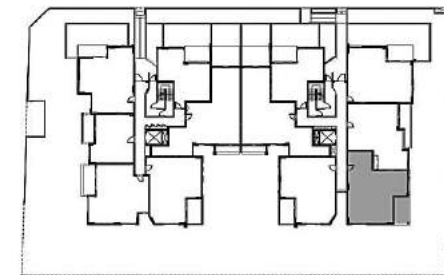
N



0 1 2 4m



## Apartment



### Unit G11



Level : Ground floor

Internal : 80.00m<sup>2</sup>

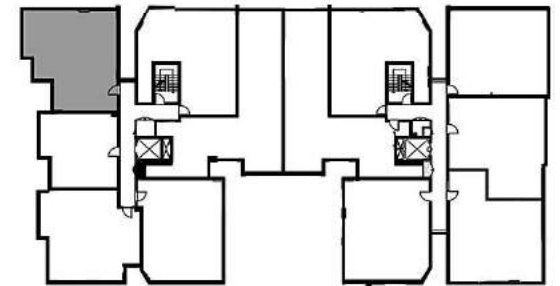
External: 9.87m<sup>2</sup>

Total area : 89.87m<sup>2</sup>





## Apartment



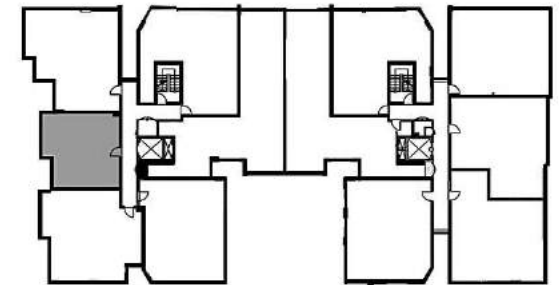
Unit 101, 201, 301



Internal : 73.97m<sup>2</sup>  
 External: 11.86m<sup>2</sup>  
 Total area : 85m<sup>2</sup>



## Apartment



Unit 102, 202



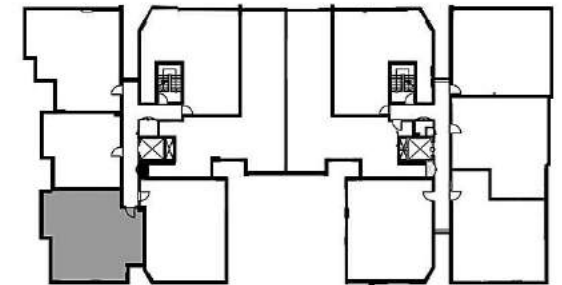
Internal : 50m<sup>2</sup>

External: 8.58m<sup>2</sup>

Total area : 56m<sup>2</sup>



## Apartment



Unit 103, 203



Internal : 73.99m<sup>2</sup>

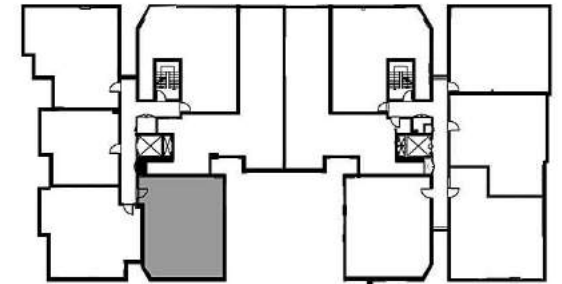
External: 9.53m<sup>2</sup>

Total area : 83m<sup>2</sup>





## Apartment



Unit 104, 204



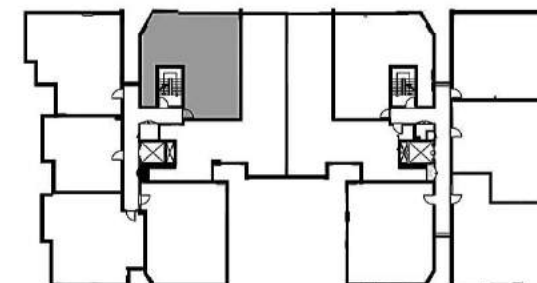
Internal : 75.56m<sup>2</sup>

External: 9.38m<sup>2</sup>

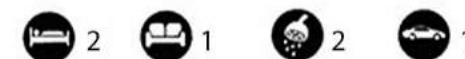
Total area : 85m<sup>2</sup>



## Apartment



Unit 105, 205, 302



Internal : 75.65m<sup>2</sup>

External : 12.31m<sup>2</sup>

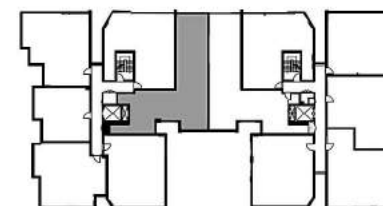
Total area : 88m<sup>2</sup>







## Apartment



Unit 106, 206, 303



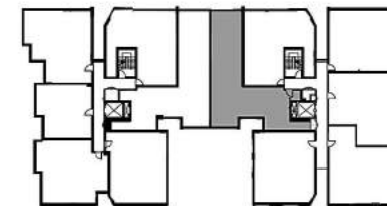
Internal : 96.20m<sup>2</sup>  
External: 18.19m<sup>2</sup>  
Total area : 114m<sup>2</sup>



Disclaimer the information and illustrations in this plan are indicative only and are subject to change. Any furniture of appliances depicted (including possible furniture and appliance locations) are illustrative only, will not form part of the property sold and are not definitive of the purpose for which any area within the property can be used. The displayed information and illustrations do not form part of any contract for sale, and interested parties must rely on their own enquiries and the information in the contract for sale.



## Apartment



Unit 107, 207, 304



Internal : 75.46m<sup>2</sup>

External: 12.76m<sup>2</sup>

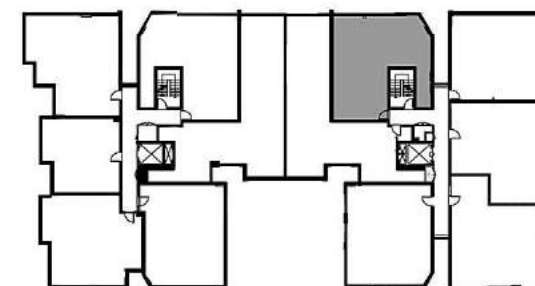
Total area : 88m<sup>2</sup>



0 1 2 4m



## Apartment



Unit 108, 208, 305



Internal : 75.46m<sup>2</sup>

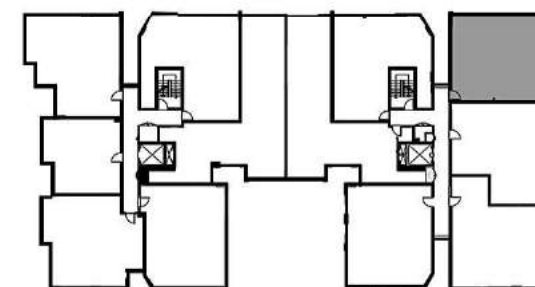
External : 12.76m<sup>2</sup>

Total area : 88m<sup>2</sup>

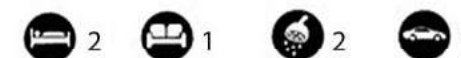


0 1 2 4m

## Apartment



Unit 109, 212, 306



Internal : 78.48m<sup>2</sup>

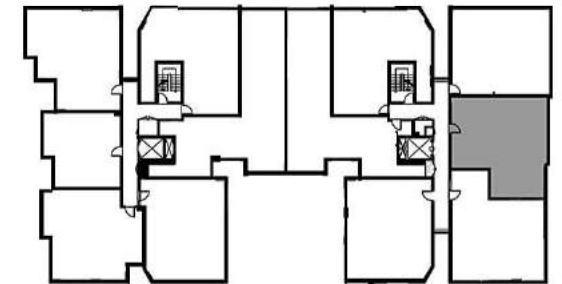
External: 9.24m<sup>2</sup>

Total area : 91m<sup>2</sup>





## Apartment



Unit 110, 211



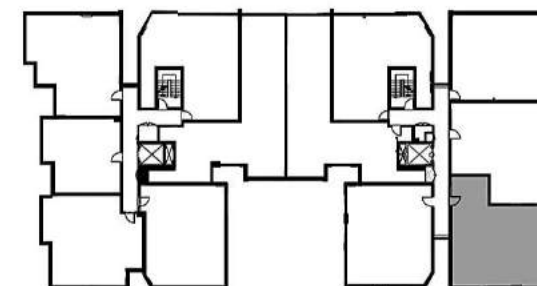
Internal : 76.99m<sup>2</sup>

External: 10.30m<sup>2</sup>

Total area : 89m<sup>2</sup>



## Apartment



Unit 111, 210



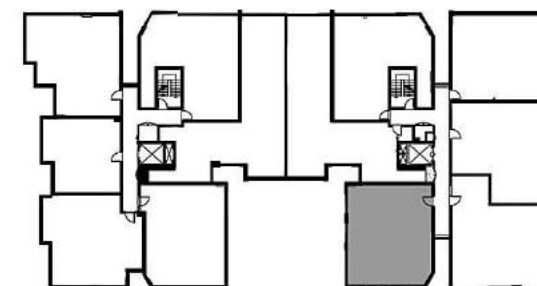
Internal : 78.99m<sup>2</sup>

External: 9.92m<sup>2</sup>

Total area : 87m<sup>2</sup>



## Apartment



Unit 112, 209



Internal : 82.05m<sup>2</sup>  
 External: 9.22m<sup>2</sup>  
 Total area : 87m<sup>2</sup>



0 1 2 4m