

TRIBECA



RIVERSTONE. NSW.

Lot 414 - Quetta Street, Riverstone , NSW 2765



Artist's impression



PALMS
ESTATE

HOUSE & LAND
\$872,880 FIXED PRICE



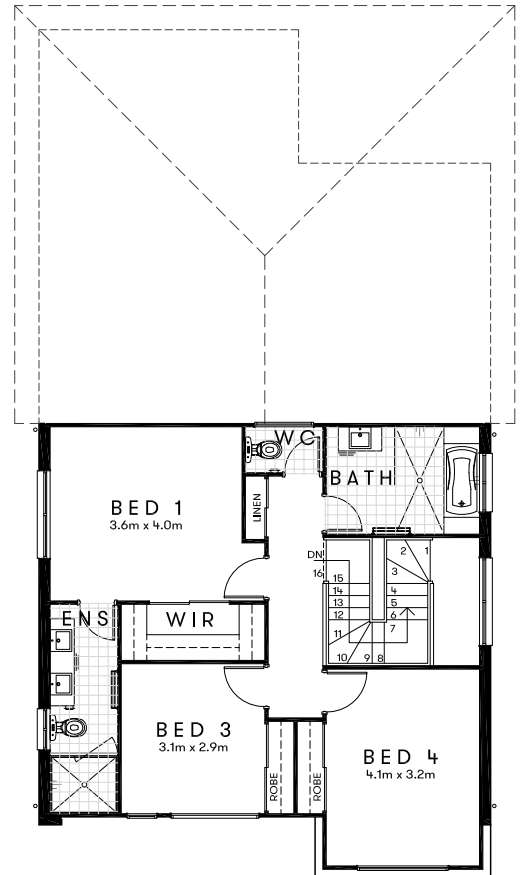
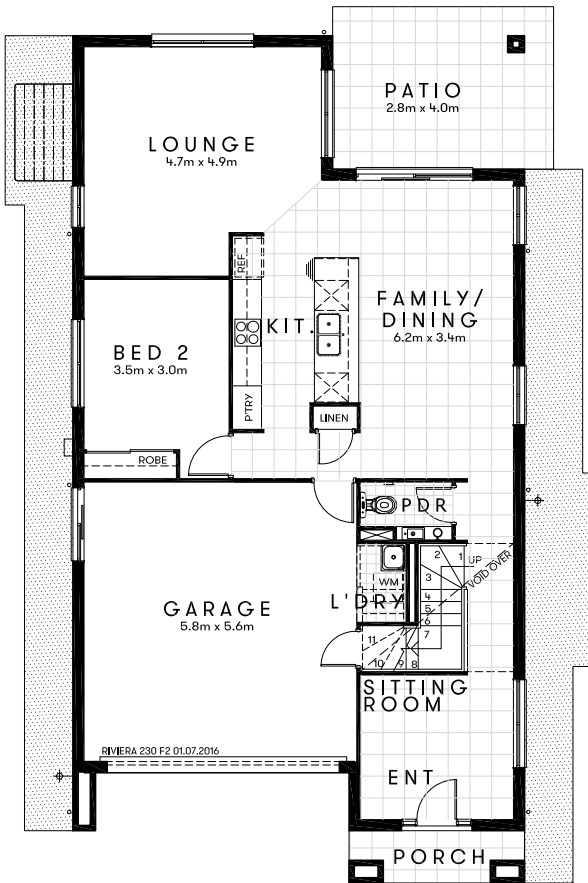
Approx. House Area 231m²
Land Area 354m²

House Price \$389,980
Land Price \$482,900

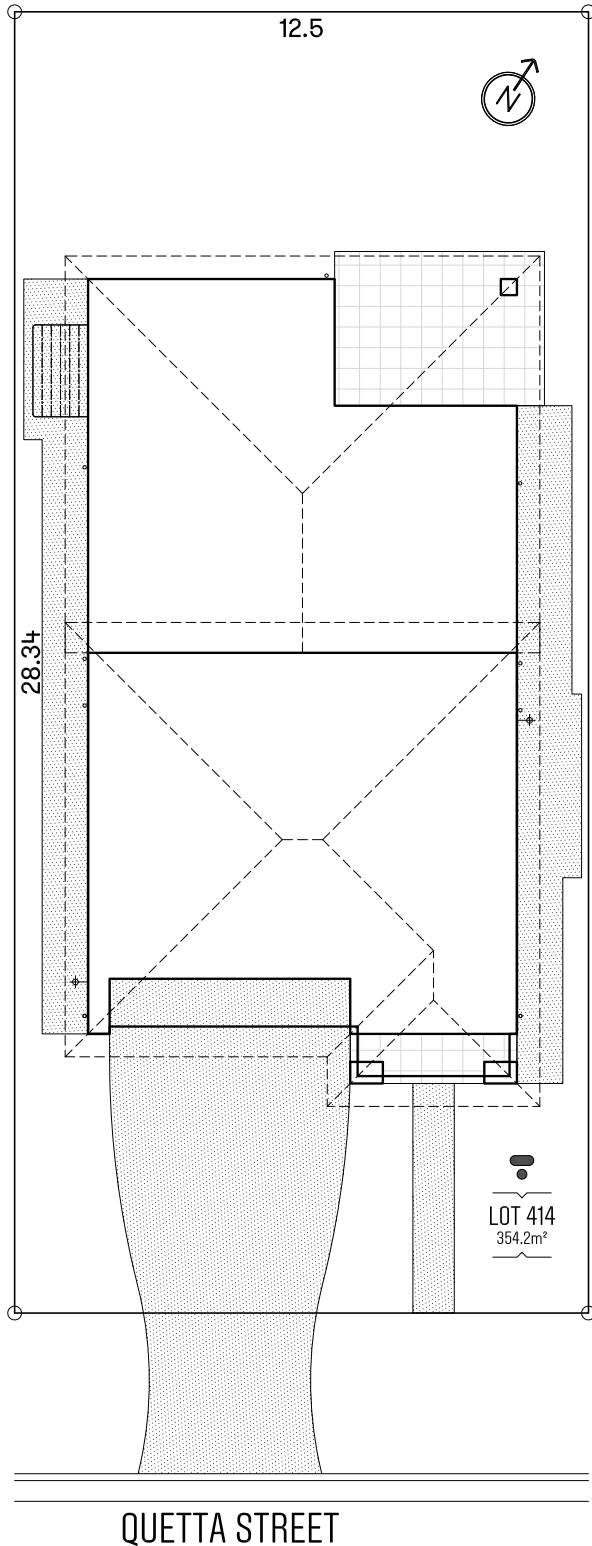
TRIBECA



Design Riviera 230 F2 Approx. House Area 231m²
 Land Area 354m² House Price \$389,980 Land Price \$482,900



LOT 414



HOME OVERVIEW

Design Riviera 230 F2
 Approx. House Area 231m²
 Land Area 354m²
 House Price \$389,980
 Land Price \$482,900

QUALITY INCLUSIONS

- Fixed site costs, no surprises
- Carpeted and tiled throughout
- 2590mm nominal ceiling height
- Manufactured stone bench top to kitchen, bathroom & ensuite
- Quality stainless steel appliances
- Superior fittings and fixtures
- Fly screens & security screens to external doors
- Blinds throughout
- Covered alfresco
- Turfed & Landscaped
- Driveway & pathways
- Fully fenced
- Clothesline & letterbox
- Preselected colours; Interior designers have created stylish interiors