

TRIBECA



EYNESBURY. VIC.

Lot 11168 - Delance Way, Eynesbury , VIC 3338



Artist's impression



EYNESBURY
ESTATE

HOUSE & LAND
\$484,980 FIXED PRICE

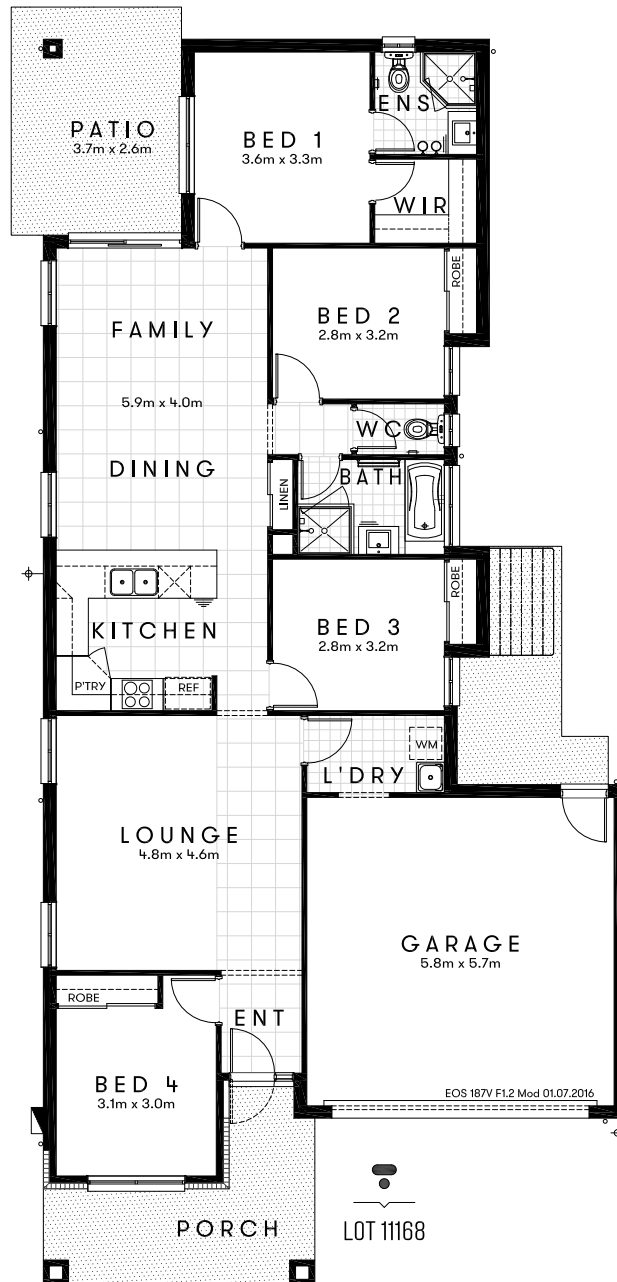


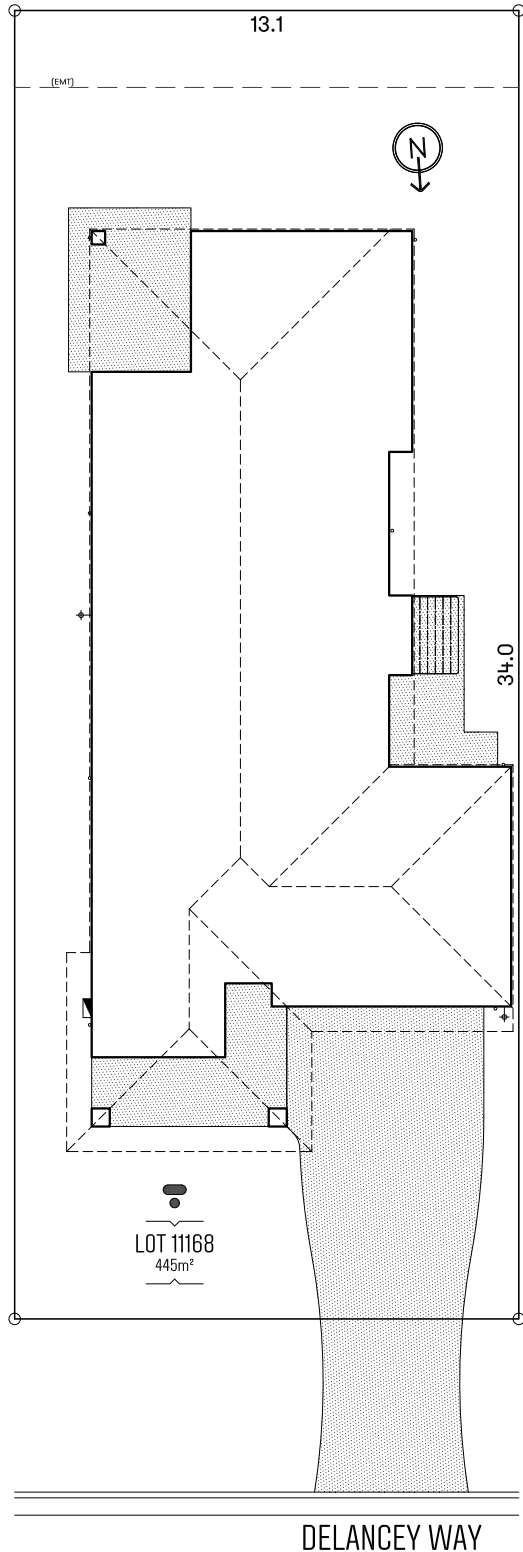
Approx. House Area 196m²
Land Area 445m²

House Price \$243,980
Land Price \$241,000

TRIBECA

Design Eos 187V Mod F1.2 Approx. House Area 196m²
Land Area 445m² House Price \$243,980 Land Price \$241,000





HOME OVERVIEW

Design Eos 187V Mod F1.2

Approx. House Area 196m²

Land Area 445m²

House Price \$243,980

Land Price \$241,000

QUALITY INCLUSIONS

- Fixed site costs, no surprises
- 2590mm raised ceiling height
- 20mm manufactured stone bench top to kitchen, bathroom and ensuite
- Reverse cycle split system air conditioner to living area
- Quality stainless steel appliances
- Carpeted and tiled throughout
- Superior fittings and fixtures
- Under-mount sink to kitchen
- Floating vanities to bathroom and ensuite
- Niches to bathroom and ensuite showers
- Flyscreens to windows, security screens to external doors
- Blinds throughout
- Covered alfresco
- Turfed and landscaped
- Colour through concrete driveway and pathways
- Fully fenced
- Clothesline & letterbox
- 3 coat paint system
- 6 star energy efficiency
- Professionally selected external and internal colours and materials

NEW STANDARD INCLUSIONS

Tribeca is committed to continuous improvement in our designs and product.

We have improved our already fantastic standard inclusions to now feature multiple improvements, making your Tribeca home or investment unmatched in quality at no extra cost.



Our new improved standard specifications include:

- Additional planting to the landscaping
- Additional LED lights across the home and the outdoor alfresco areas
- Additional double powerpoints to each room
- Larger tiles (450mmx450mm) in bathroom and ensuites for a premium look
- New Handheld shower rail
- Niches to bathroom and ensuite showers
- Brick finish over windows
- Colour through concrete driveways



OUR DIFFERENCE IS SEEN IN
THE MOST OBVIOUS PLACES,
BUT ALSO THE SMALLER ONES.

