



STAGE 3A | WHITE ROCK RELEASE

# ABBEY MK2 - MANHATTAN

4  2  2  2 

HOME SITES 137



urbaneHOMES

# ABBHEY MK2 MANHATTAN

4  2  2  2 

Designed by acclaimed architect, Kevin Mullin, each Urbane Homes design is carefully crafted using an infusion of architectural and interior design trends that create relaxed and timeless living spaces. The intricate design journey ensures each home is crafted with precision and finesse, while complimenting the surrounding subtropical environment.

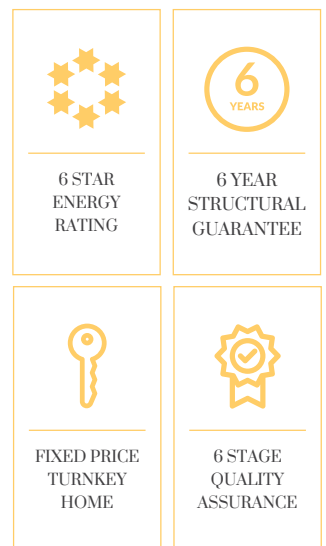
**2 spacious open-plan living areas | open plan kitchen and living area | connectivity between indoor and outdoor living spaces.**

---

## AVAILABLE WITH THE FOLLOWING INCLUSIONS:

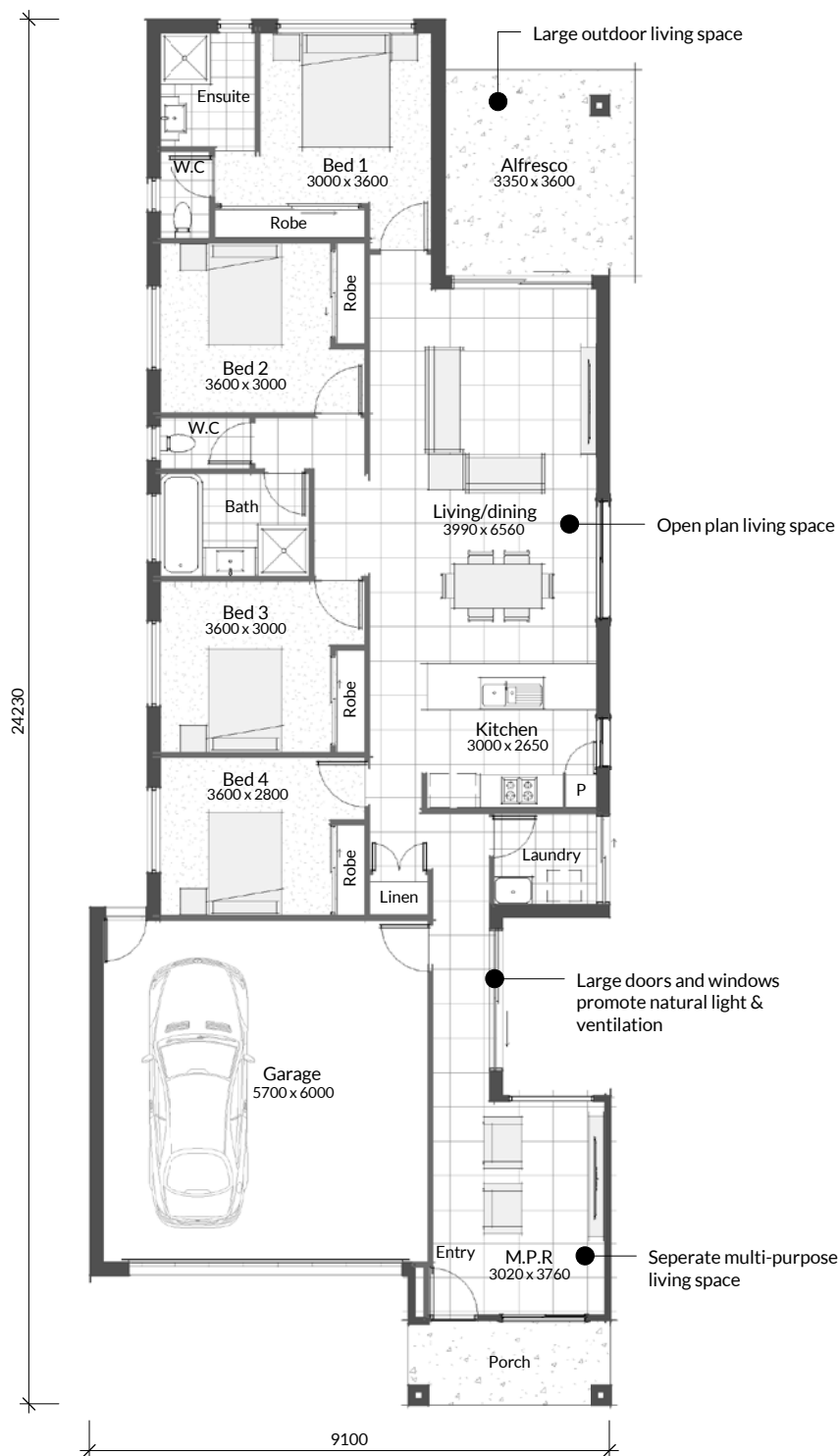
---

- |  |   |
|--|---|
| » All site preparation costs including fees                  | » Stainless steel kitchen appliances including dishwasher           |
| » All service connection costs including fees                | » NBN ready   |
| » Foundations to suit soil conditions                        | » 3 coats of Taubman's premium paints (internal)                    |
| » Feature render or feature brick facade                     | » Tailored landscaping treatment to compliment the house design     |
| » Floor coverings throughout                                 | » Fencing to the sides & rear of the home including side gate       |
| » Split system air-conditioning                              | » Exposed aggregate concrete to the driveway, porch & alfresco area |
| » Flyscreens to all openable windows & doors                 | » Letterbox, clothesline, TV aerial & whirly bird                   |
| » Barrier screen to front door                               |   |
| » Roller blinds to all bedrooms & living areas               |   |
| » Built-in wardrobes to all bedrooms                         |   |
| » Ceiling fans in all bedrooms & living areas                |   |
| » Kitchen with 3m island bench incorporating a breakfast bar |   |



Disclaimer: While every reasonable care has been taken in the preparation of this document, and all particulars contained here are believed to be true and correct at the time of printing, interested parties must rely on their own inspections and enquiries. Photography and illustrations are for presentation purposes only and should be regarded as indicative representations only. Certain items shown such as furniture, vehicles and advanced landscaping are not included. The floor plan depicted may not represent the correct house orientation for this lot and may be mirror reverse. Please refer to the separate site plan for correct house orientation and position on this lot. The internal and external colour schemes depicted may not represent the actual internal and external colour schemes allocated to this lot, please refer to the separate colour schemes assigned to this lot. Sizes shown have been rounded and are subject to change without notice.

## FLOORPLAN



### FLOOR AREAS:

Indoor Living	131.12m <sup>2</sup>
Garage	36.98m <sup>2</sup>
Outdoor Living	12.30m <sup>2</sup>
Portico	5.21m <sup>2</sup>
<b>TOTAL (M<sup>2</sup>)</b>	<b>185.61m<sup>2</sup></b>



The Abbey MK2 is designed to maximise family living, natural light and ventilation. An impressive front multi-purpose room is flooded with natural light and is separated from the remaining parts of the house offering flexible living options rarely seen on a small lot.

**Kevin Mullin**

Urbane Homes  
Design Manager

All dimensions are in **mm**

House orientation may be mirror reverse: please refer to the site plan for correct orientation and position on lot.