

TRIBECA

ORMEAU. QLD.

Lot 33 - Minka Lane, Ormeau, QLD 4208



Artists impression



HOUSE & LAND
\$468,980 FIXED PRICE



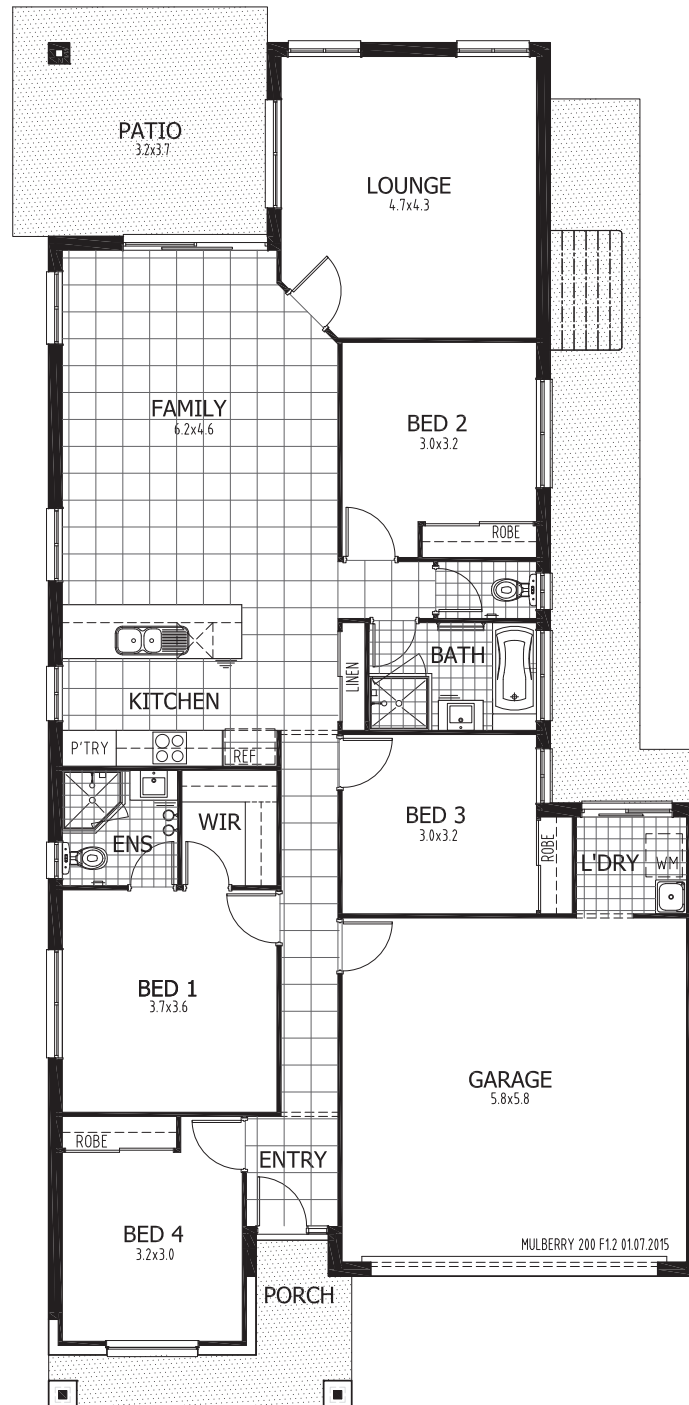
Approx. House Area 204m²
Land Area 375m²

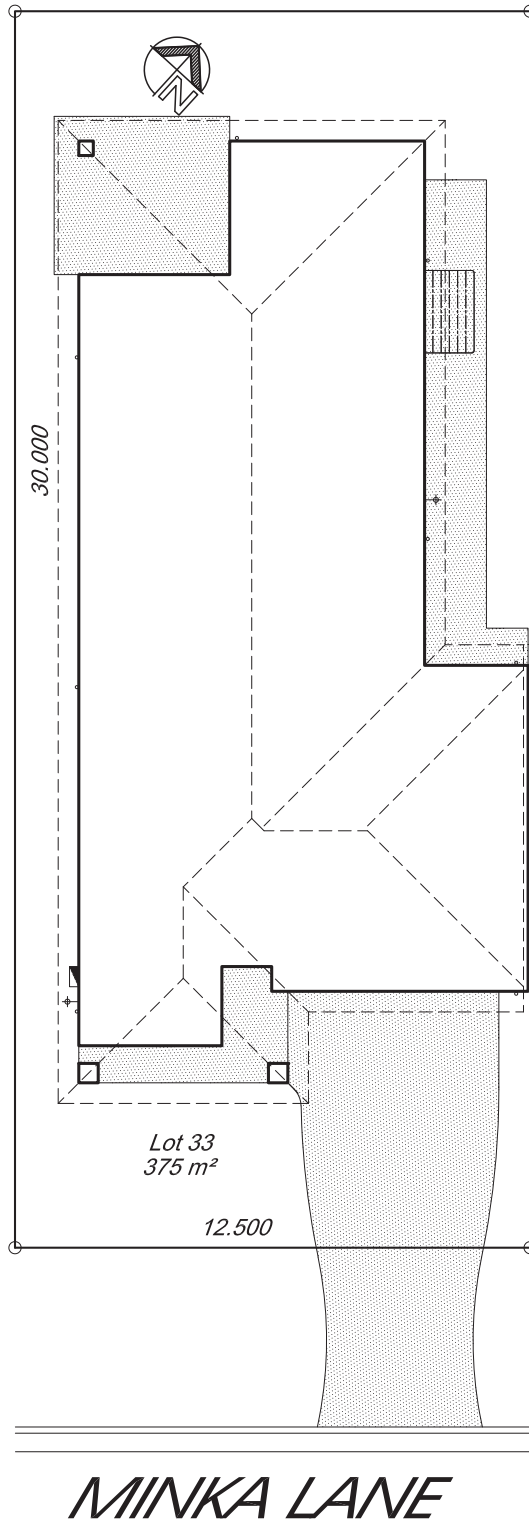
House Price \$235,980
Land Price \$233,000

TRIBECA

Design Mulberry F1.2 Approx. House Area 204m²
Land Area 375m² House Price \$235,980 Land Price \$233,000

Free split
system A/C for
prompt finance
approval





HOME OVERVIEW

Design Mulberry F1.2
Approx. House Area 204m²
Land Area 375m²
House Price \$235,980
Land Price \$233,000

QUALITY INCLUSIONS

- Fixed site costs, no surprises
- Carpeted and tiled throughout
- 2590mm nominal ceiling height
- Manufactured stone bench top to kitchen, bathroom & ensuite
- Quality stainless steel appliances
- Superior fittings and fixtures
- Fly screens & security screens to external doors
- Blinds throughout
- Covered alfresco
- Turfed & Landscaped
- Driveway & pathways
- Fully fenced
- Clothesline & letterbox
- Preselected colours; Interior designers have created stylish interiors

EXPERIENCE A LIFE THAT NEVER DULLS

PERFECTLY PLACED HALFWAY BETWEEN THE GOLD COAST AND BRISBANE, THE EXPANSIVE GREEN SUBURB OF ORMEAU OFFERS AN EASY TWENTY-FIVE MINUTE COMMUTE TO BOTH VIBRANT CITIES. TRIBECA'S EVERGREEN ESTATE IS A COMMUNITY OFFERING A RANGE OF HOME AND LAND PACKAGES, WITH A CHOICE OF SPACIOUS MODERN AND TRADITIONAL FOUR BEDROOM HOME DESIGNS.

In the immediate area lies a range of quality public and private schools, healthcare options and childcare facilities. An array of public transport options just minutes away, putting universities, airports and city CBDs within easy reach. Some of Australia's major theme parks and best coastal spots are just minutes away. Plus, emerging and revitalised industries are creating a diverse range of exciting employment and growth opportunities in the area. All of which makes Ormeau a truly unique location – a place that offers complete and utter freedom, but one you won't want to leave.

