

TRIBECA

# RIVERSTONE. NSW.

**Lot 115** - Sheila Street, Riverstone, NSW 2765



CROWN  
HILL

HOUSE & LAND  
**\$774,880** FIXED  
PRICE



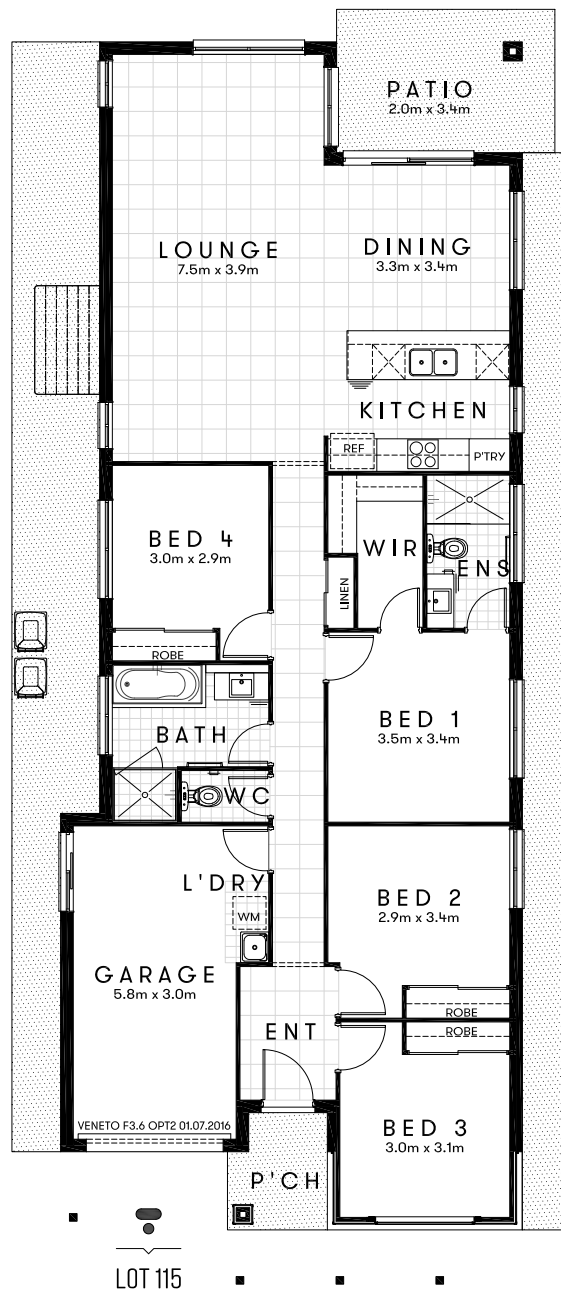
Approx. House Area 171m<sup>2</sup>  
Land Area 384m<sup>2</sup>

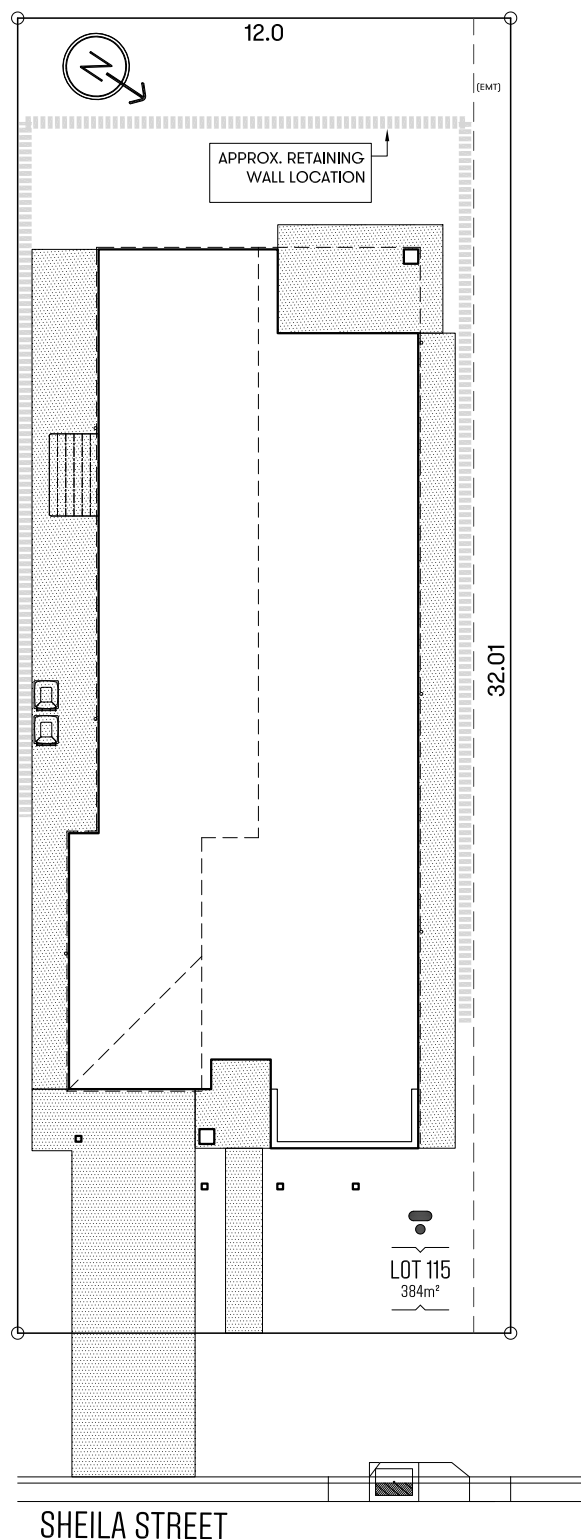
House Price \$294,980  
Land Price \$479,900

# TRIBECA

Design Veneto Opt 2 F3.6 Approx. House Area 171m<sup>2</sup>  
Land Area 384m<sup>2</sup> House Price \$294,980 Land Price \$479,900

Free  
ducted A/C for  
prompt finance  
approval





## HOME OVERVIEW

**Design** Veneto Opt 2 F3.6

**Approx. House Area** 171m<sup>2</sup>

**Land Area** 384m<sup>2</sup>

**House Price** \$294,980

**Land Price** \$479,900

## QUALITY INCLUSIONS

- Fixed site costs, no surprises
- Carpeted and tiled throughout
- 2590mm nominal ceiling height
- Manufactured stone bench top to kitchen, bathroom & ensuite
- Quality stainless steel appliances
- Superior fittings and fixtures
- Fly screens & security screens to external doors
- Blinds throughout
- Covered alfresco
- Turfed & Landscaped
- Driveway & pathways
- Fully fenced
- Clothesline & letterbox
- Preselected colours; Interior designers have created stylish interiors