

TRIBECA

# RIVERSTONE. NSW.

**Lot 201** - Cassie Avenue, Riverstone, NSW 2765



CROWN  
HILL

HOUSE & LAND  
**\$719,880** FIXED PRICE



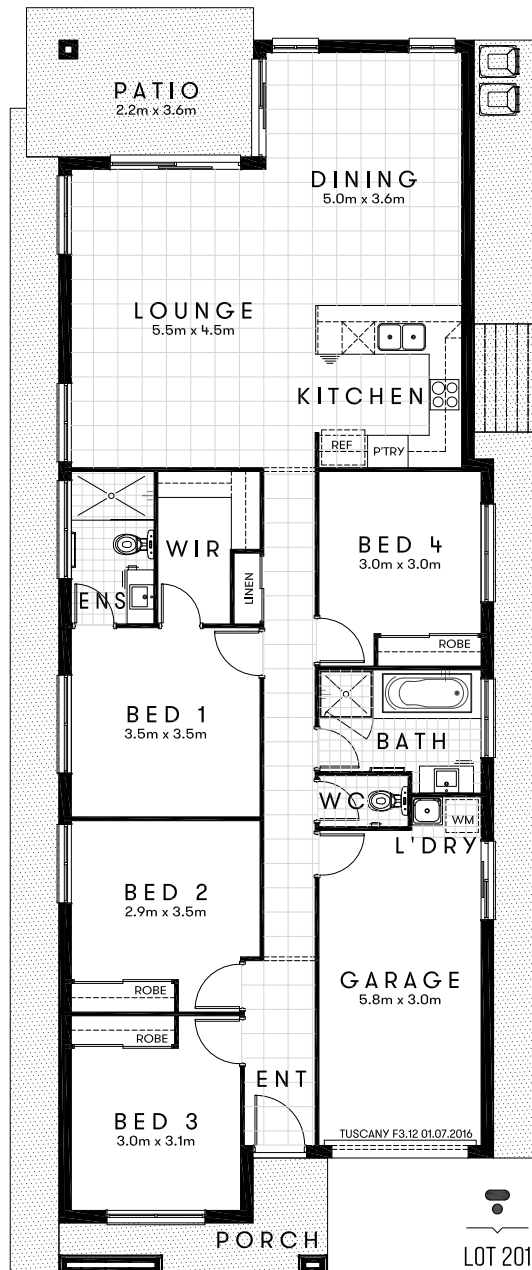
Approx. House Area 174m<sup>2</sup>  
Land Area 338m<sup>2</sup>

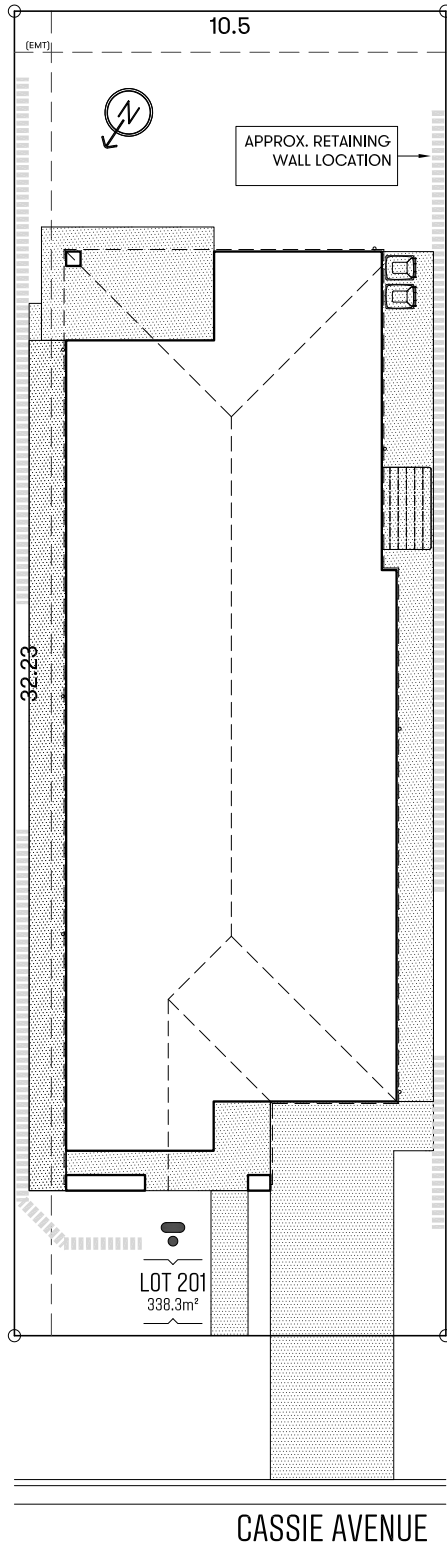
House Price \$279,980  
Land Price \$439,900

TRIBECA

Design Tuscany F3.12 Approx. House Area 174m<sup>2</sup>  
Land Area 338m<sup>2</sup> House Price \$279,980 Land Price \$439,900

Free  
ducted A/C for  
prompt finance  
approval





## HOME OVERVIEW

**Design** Tuscany F3.12

**Approx. House Area** 174m<sup>2</sup>

**Land Area** 338m<sup>2</sup>

**House Price** \$279,980

**Land Price** \$439,900

## QUALITY INCLUSIONS

- Fixed site costs, no surprises
- Carpeted and tiled throughout
- 2590mm nominal ceiling height
- Manufactured stone bench top to kitchen, bathroom & ensuite
- Quality stainless steel appliances
- Superior fittings and fixtures
- Fly screens & security screens to external doors
- Blinds throughout
- Covered alfresco
- Turfed & Landscaped
- Driveway & pathways
- Fully fenced
- Clothesline & letterbox
- Preselected colours; Interior designers have created stylish interiors