

TRIBECA

LEICHHARDT. QLD.

Lot 314 - Old Toowoomba Road, Leichhardt , QLD 4305



Artist's impression

HERITAGE LINKS
ESTATE

HOUSE & LAND
\$474,980 FIXED
PRICE



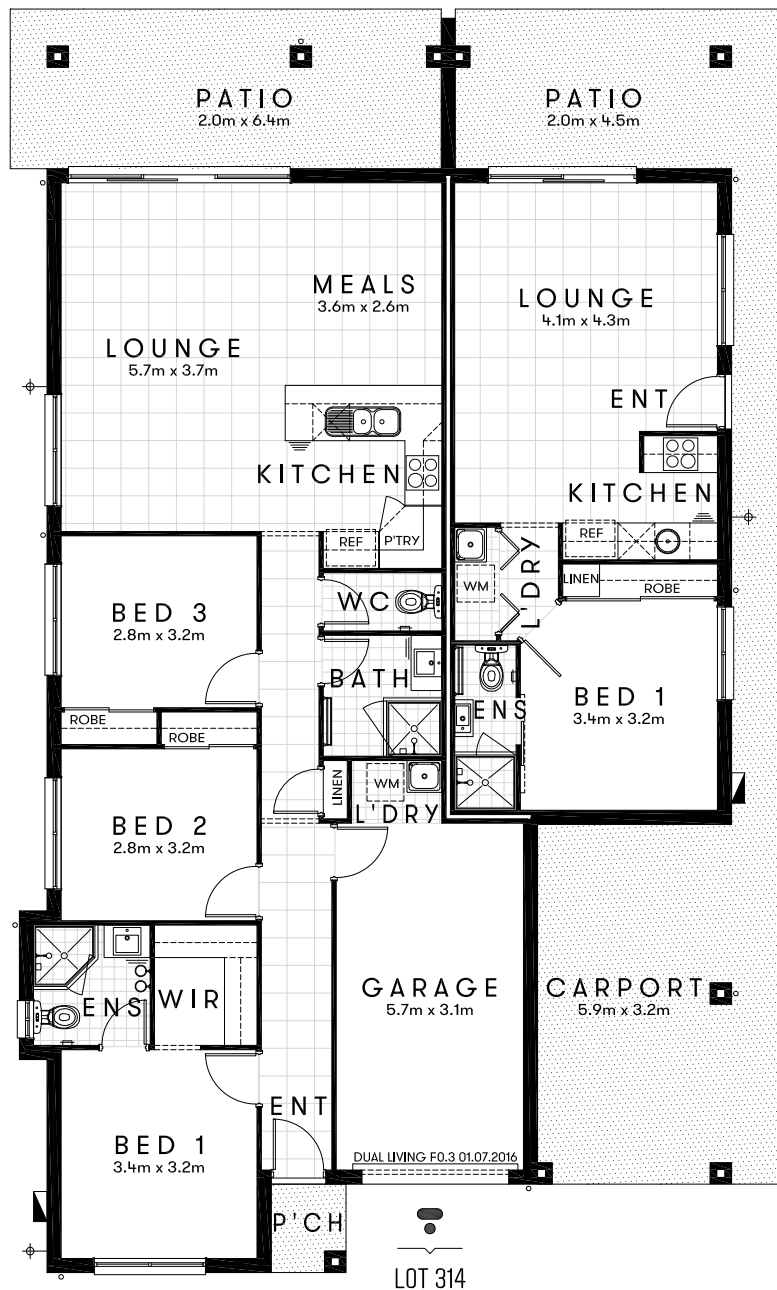
Approx. House Area 215m²
Land Area 502m²

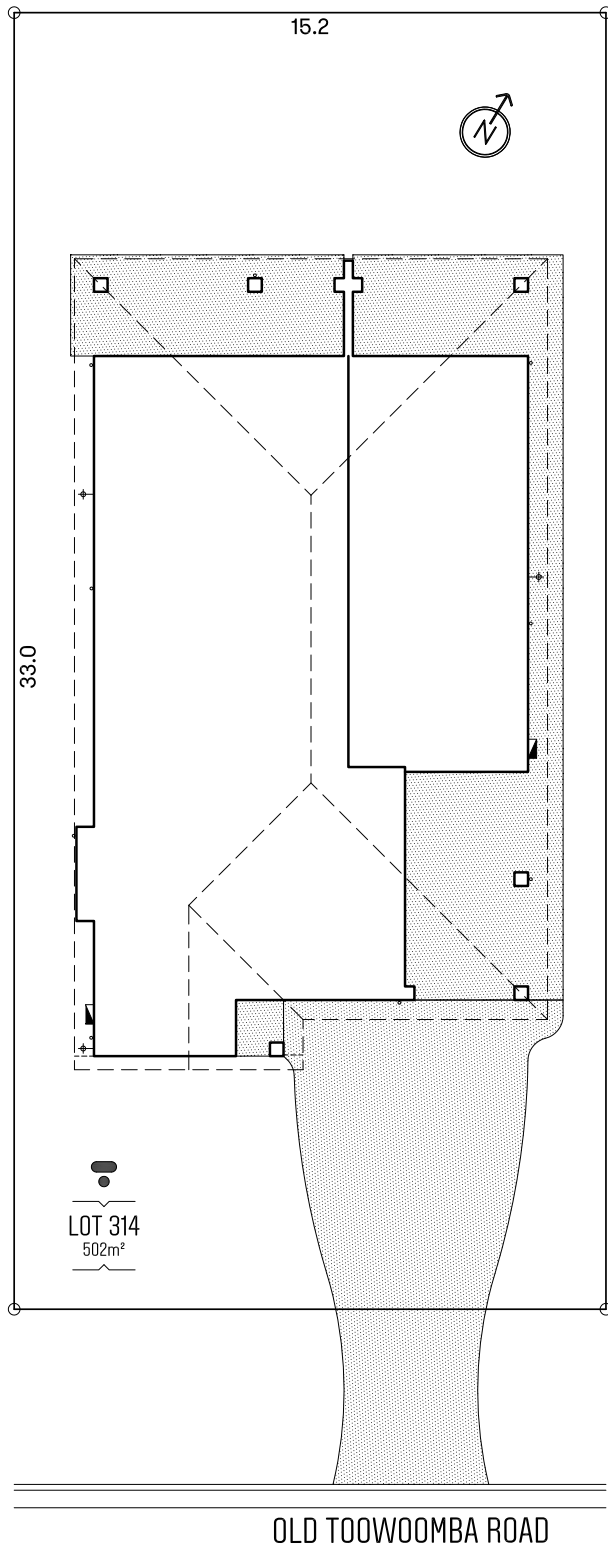
House Price \$299,980
Land Price \$175,000

TRIBECA

Design Dual Living F0.3 Approx. House Area 215m²
Land Area 502m² House Price \$299,980 Land Price \$175,000

Free split
system A/C for
prompt finance
approval





HOME OVERVIEW

Design Dual Living F0.3
Approx. House Area 215m²
Land Area 502m²
House Price \$299,980
Land Price \$175,000

QUALITY INCLUSIONS

- Fixed site costs, no surprises
- Carpeted and tiled throughout
- 2590mm nominal ceiling height
- Manufactured stone bench top to kitchen, bathroom & ensuite
- Quality stainless steel appliances
- Superior fittings and fixtures
- Fly screens & security screens to external doors
- Blinds throughout
- Covered alfresco
- Turfed & Landscaped
- Driveway & pathways
- Fully fenced
- Clothesline & letterbox
- Preselected colours; Interior designers have created stylish interiors