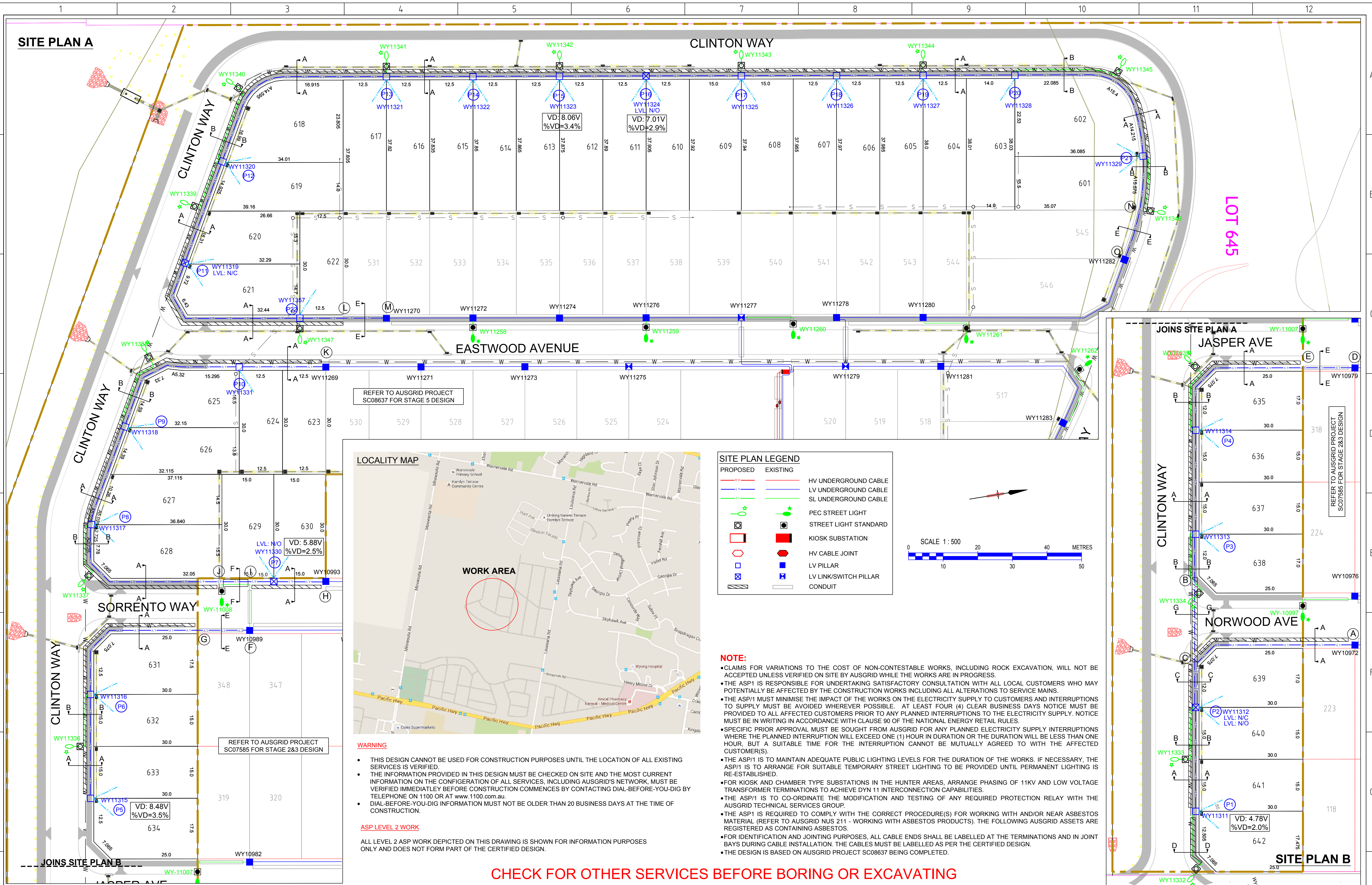


SITE PLAN A

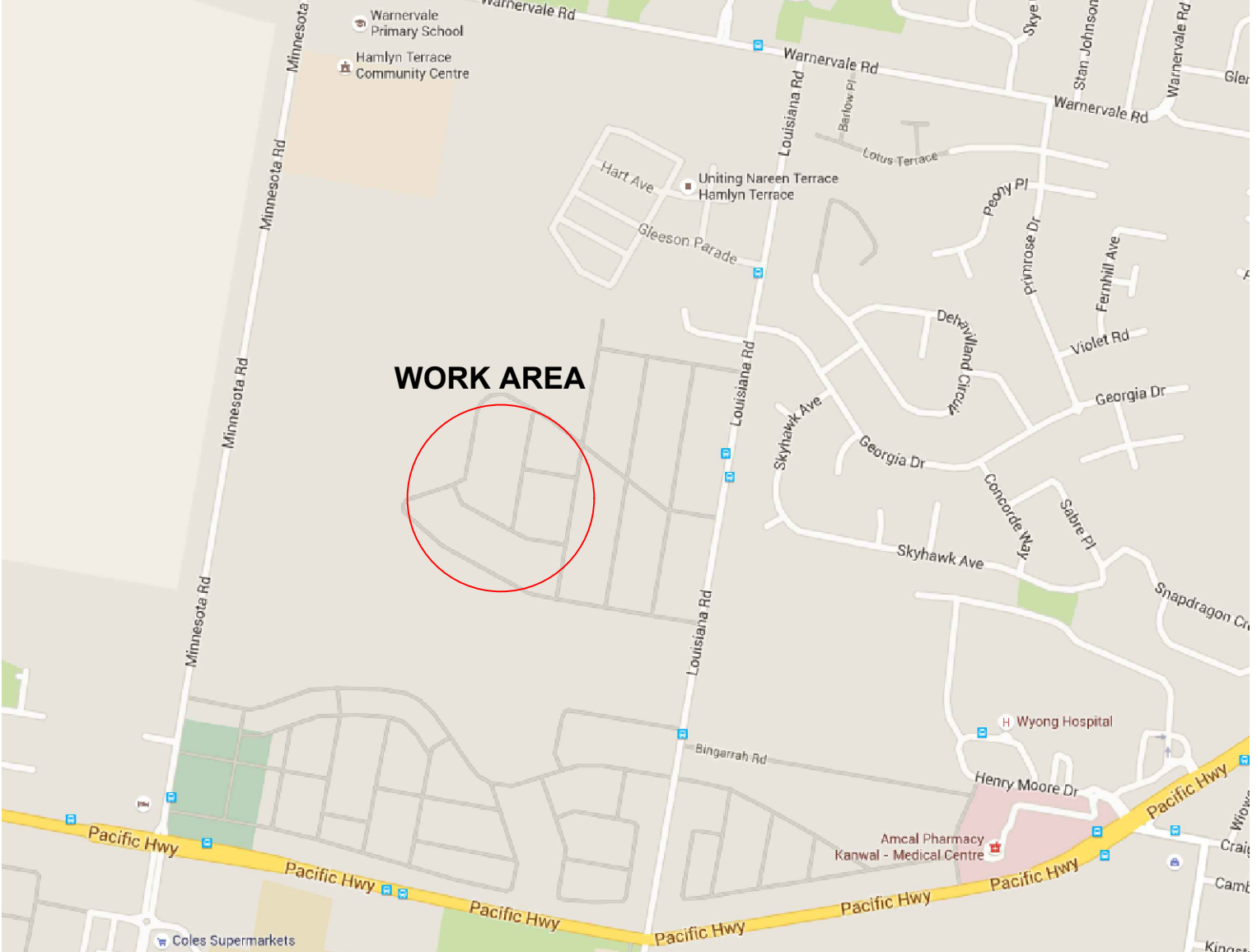


LOT 645

REFER TO AUSGRID PROJECT SC08637 FOR STAGE 5 DESIGN

REFER TO AUSGRID PROJECT SC07585 FOR STAGE 2&3 DESIGN

LOCALITY MAP



WARNING

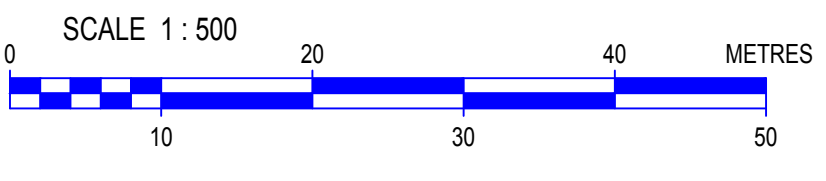
- THIS DESIGN CANNOT BE USED FOR CONSTRUCTION PURPOSES UNTIL THE LOCATION OF ALL EXISTING SERVICES IS VERIFIED.
- THE INFORMATION PROVIDED IN THIS DESIGN MUST BE CHECKED ON SITE AND THE MOST CURRENT INFORMATION ON THE CONFIGURATION OF ALL SERVICES, INCLUDING AUSGRID'S NETWORK, MUST BE VERIFIED IMMEDIATELY BEFORE CONSTRUCTION COMMENCES BY CONTACTING DIAL-BEFORE-YOU-DIG BY TELEPHONE ON 1100 OR AT www.1100.com.au.
- DIAL-BEFORE-YOU-DIG INFORMATION MUST NOT BE OLDER THAN 20 BUSINESS DAYS AT THE TIME OF CONSTRUCTION.

ASP LEVEL 2 WORK

ALL LEVEL 2 ASP WORK DEPICTED ON THIS DRAWING IS SHOWN FOR INFORMATION PURPOSES ONLY AND DOES NOT FORM PART OF THE CERTIFIED DESIGN.

SITE PLAN LEGEND

PROPOSED	EXISTING	
		HV UNDERGROUND CABLE
		LV UNDERGROUND CABLE
		SL UNDERGROUND CABLE
		PEC STREET LIGHT
		STREET LIGHT STANDARD
		KIOSK SUBSTATION
		HV CABLE JOINT
		LV PILLAR
		LV LINK/SWITCH PILLAR
		CONDUIT

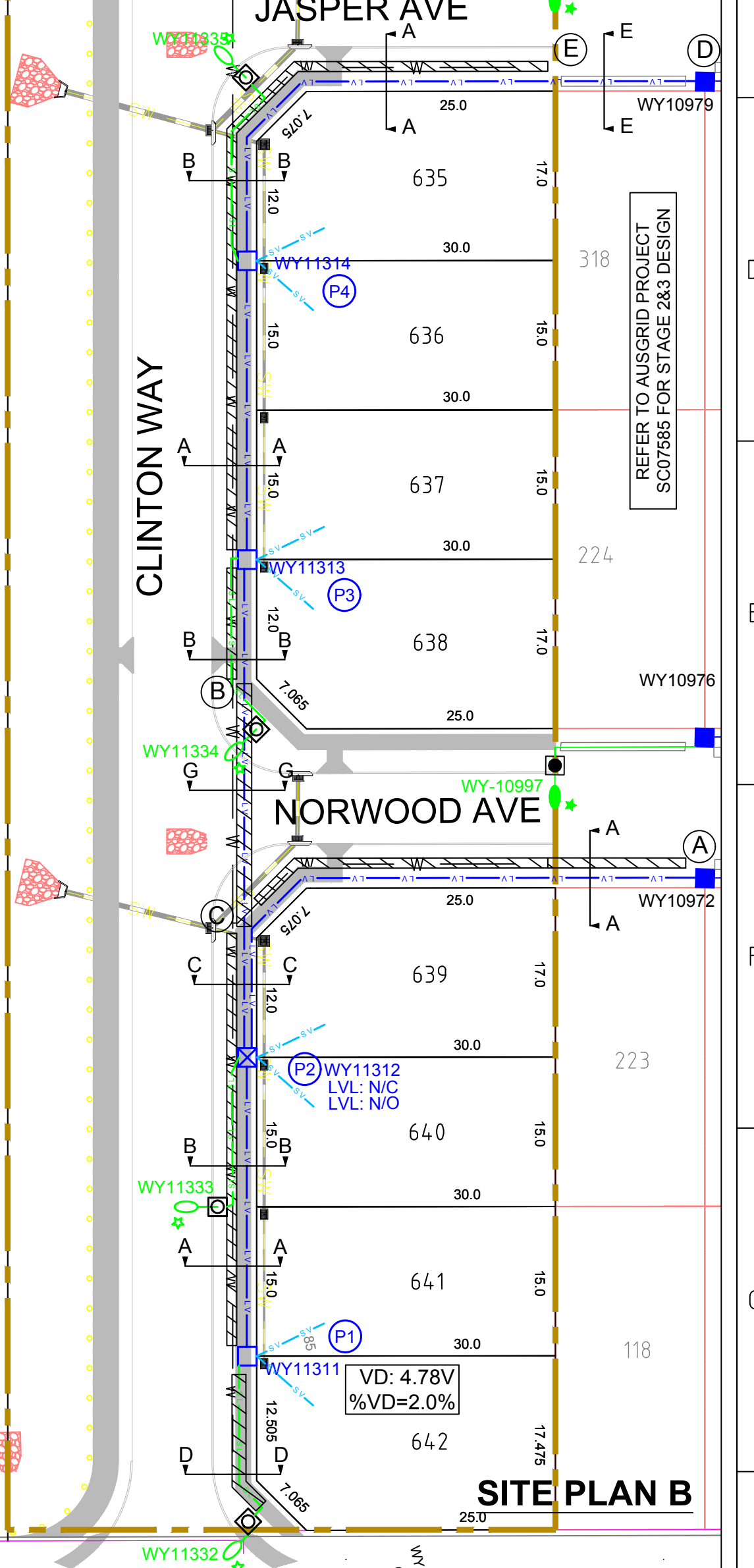


NOTE:

- CLAIMS FOR VARIATIONS TO THE COST OF NON-CONTESTABLE WORKS, INCLUDING ROCK EXCAVATION, WILL NOT BE ACCEPTED UNLESS VERIFIED ON SITE BY AUSGRID WHILE THE WORKS ARE IN PROGRESS.
- THE ASP1 IS RESPONSIBLE FOR UNDERTAKING SATISFACTORY CONSULTATION WITH ALL LOCAL CUSTOMERS WHO MAY POTENTIALLY BE AFFECTED BY THE CONSTRUCTION WORKS INCLUDING ALL ALTERATIONS TO SERVICE MAINS.
- THE ASP1 MUST MINIMISE THE IMPACT OF THE WORKS ON THE ELECTRICITY SUPPLY TO CUSTOMERS AND INTERRUPTIONS TO SUPPLY MUST BE AVOIDED WHEREVER POSSIBLE. AT LEAST FOUR (4) CLEAR BUSINESS DAYS NOTICE MUST BE PROVIDED TO ALL AFFECTED CUSTOMERS PRIOR TO ANY PLANNED INTERRUPTIONS TO THE ELECTRICITY SUPPLY. NOTICE MUST BE IN WRITING IN ACCORDANCE WITH CLAUSE 90 OF THE NATIONAL ENERGY RETAIL RULES.
- SPECIFIC PRIOR APPROVAL MUST BE SOUGHT FROM AUSGRID FOR ANY PLANNED ELECTRICITY SUPPLY INTERRUPTIONS WHERE THE PLANNED INTERRUPTION WILL EXCEED ONE (1) HOUR IN DURATION OR THE DURATION WILL BE LESS THAN ONE HOUR, BUT A SUITABLE TIME FOR THE INTERRUPTION CANNOT BE MUTUALLY AGREED TO WITH THE AFFECTED CUSTOMER(S).
- THE ASP1 IS TO MAINTAIN ADEQUATE PUBLIC LIGHTING LEVELS FOR THE DURATION OF THE WORKS. IF NECESSARY, THE ASP1 IS TO ARRANGE FOR SUITABLE TEMPORARY STREET LIGHTING TO BE PROVIDED UNTIL PERMANENT LIGHTING IS RE-ESTABLISHED.
- FOR KIOSK AND CHAMBER TYPE SUBSTATIONS IN THE HUNTER AREAS, ARRANGE PHASING OF 11KV AND LOW VOLTAGE TRANSFORMER TERMINATIONS TO ACHIEVE DYN 11 INTERCONNECTION CAPABILITIES.
- THE ASP1 IS TO CO-ORDINATE THE MODIFICATION AND TESTING OF ANY REQUIRED PROTECTION RELAY WITH THE AUSGRID TECHNICAL SERVICES GROUP.
- THE ASP1 IS REQUIRED TO COMPLY WITH THE CORRECT PROCEDURE(S) FOR WORKING WITH AND/OR NEAR ASBESTOS MATERIAL (REFER TO AUSGRID NUS 211 - WORKING WITH ASBESTOS PRODUCTS). THE FOLLOWING AUSGRID ASSETS ARE REGISTERED AS CONTAINING ASBESTOS.
- FOR IDENTIFICATION AND JOINTING PURPOSES, ALL CABLE ENDS SHALL BE LABELLED AT THE TERMINATIONS AND IN JOINT BAYS DURING CABLE INSTALLATION. THE CABLES MUST BE LABELLED AS PER THE CERTIFIED DESIGN.
- THE DESIGN IS BASED ON AUSGRID PROJECT SC08637 BEING COMPLETED.

CHECK FOR OTHER SERVICES BEFORE BORING OR EXCAVATING

JOINS SITE PLAN A



REFER TO AUSGRID PROJECT SC07585 FOR STAGE 2&3 DESIGN

SITE PLAN B

CAD DRAWING
AMENDMENTS

NOT FOR CONSTRUCTION

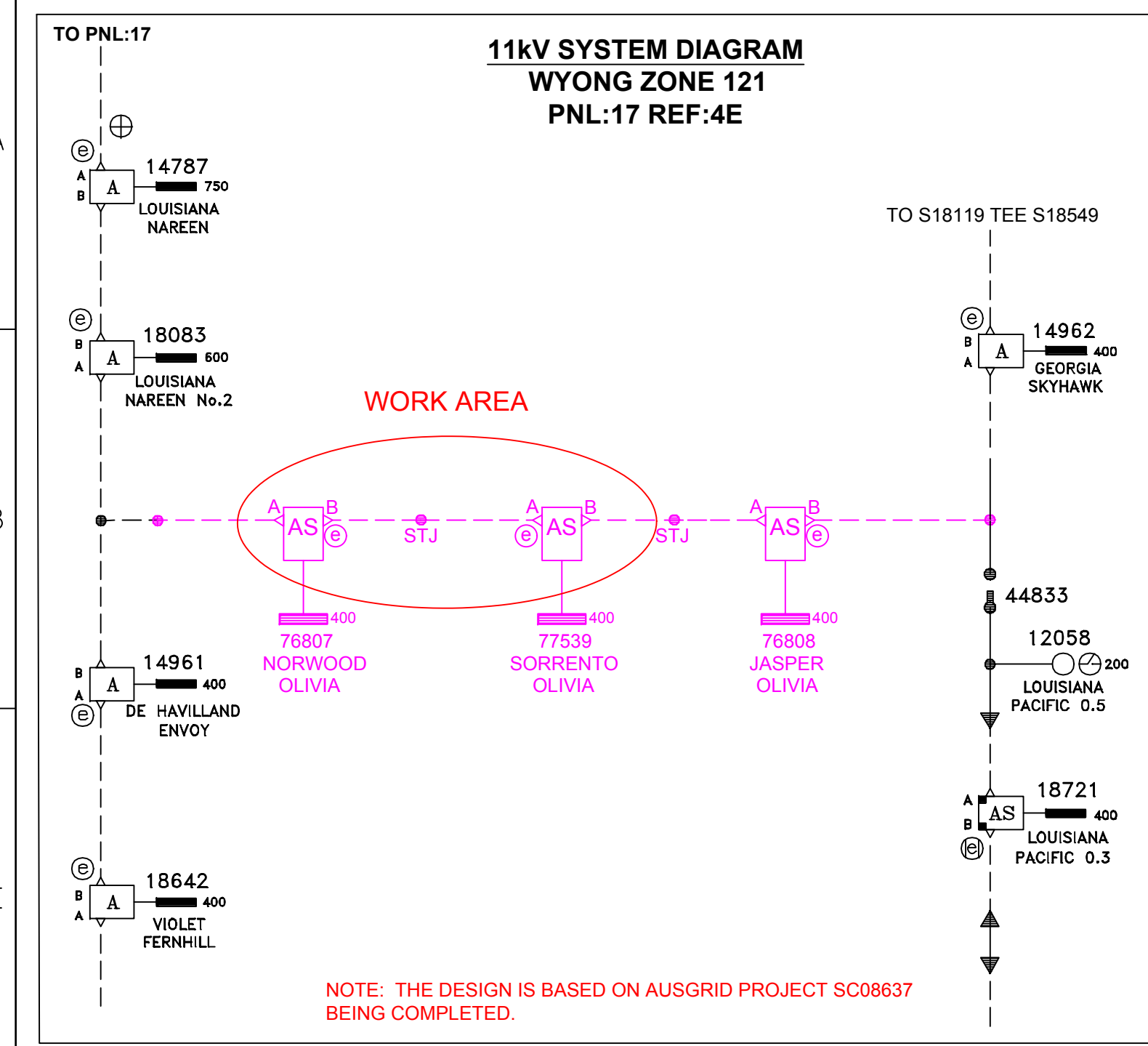
DESIGNED BY B. LIU	DRAWN BY R. BOURNE	SUBMITTED DATE 26/08/2016	SUBMITTED TO CENTRAL COAST COUNCIL	MAP REF. CENTRAL COAST M40-RJ11	AUSGRID REF. WY-34	PRJ/TRAK No. XCNO10743	ASPD REF. 0863	CERTIFICATION NUMBER	SIZE A1	AUSGRID PROJECT No. SC08681	SHEETS 1 of 2	AMD 0



Phone: (02) 4933 3013
Fax: (02) 4933 3013
Email: general@electrical-design.com.au
Accreditation No. 2774
MAILLAND NSW 2320

Stage 6 - 42 Lot Subdivision
Louisiana Road Hamlyn Terrace

CHECK FOR OTHER SERVICES BEFORE BORING OR EXCAVATING

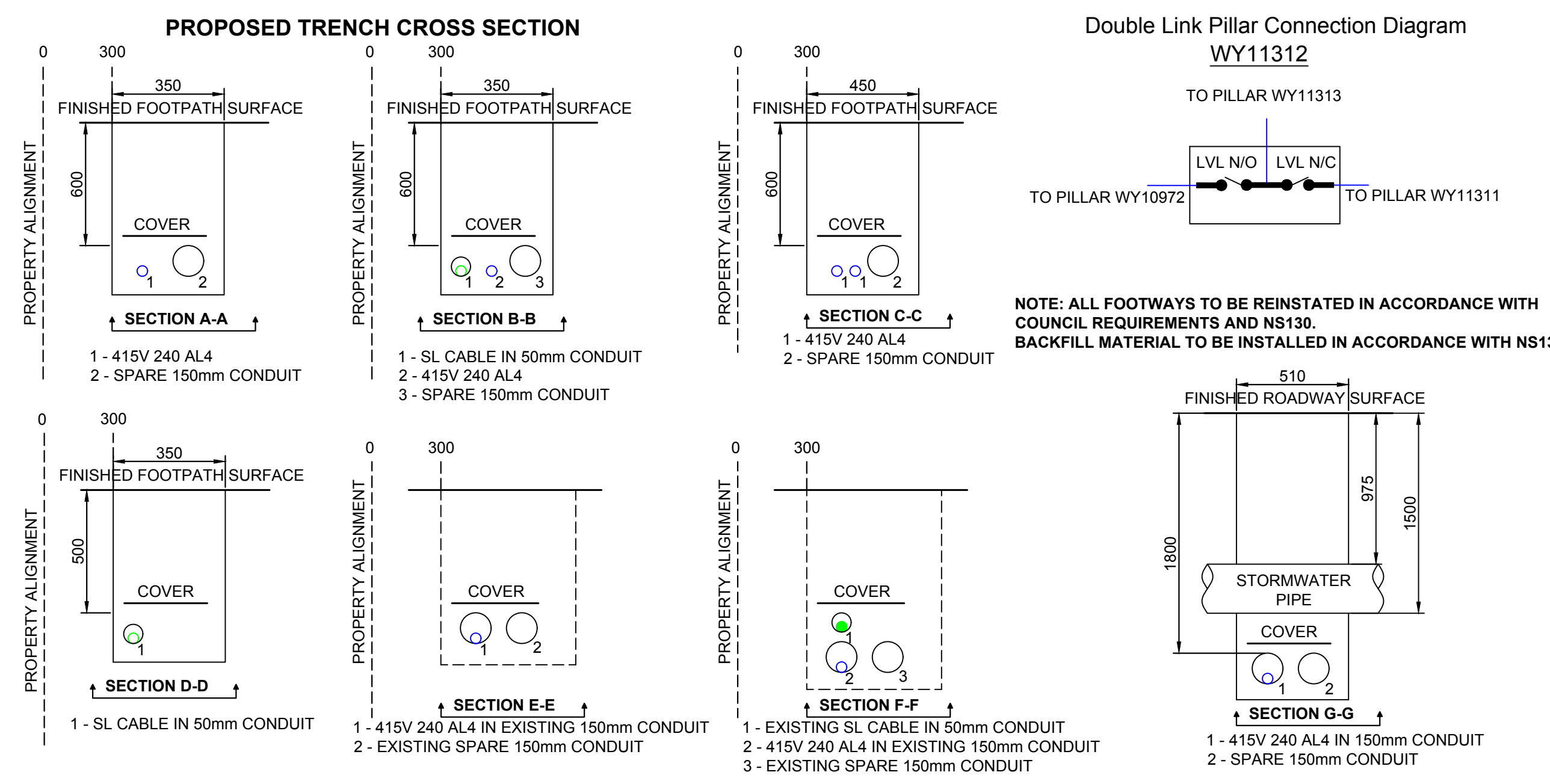
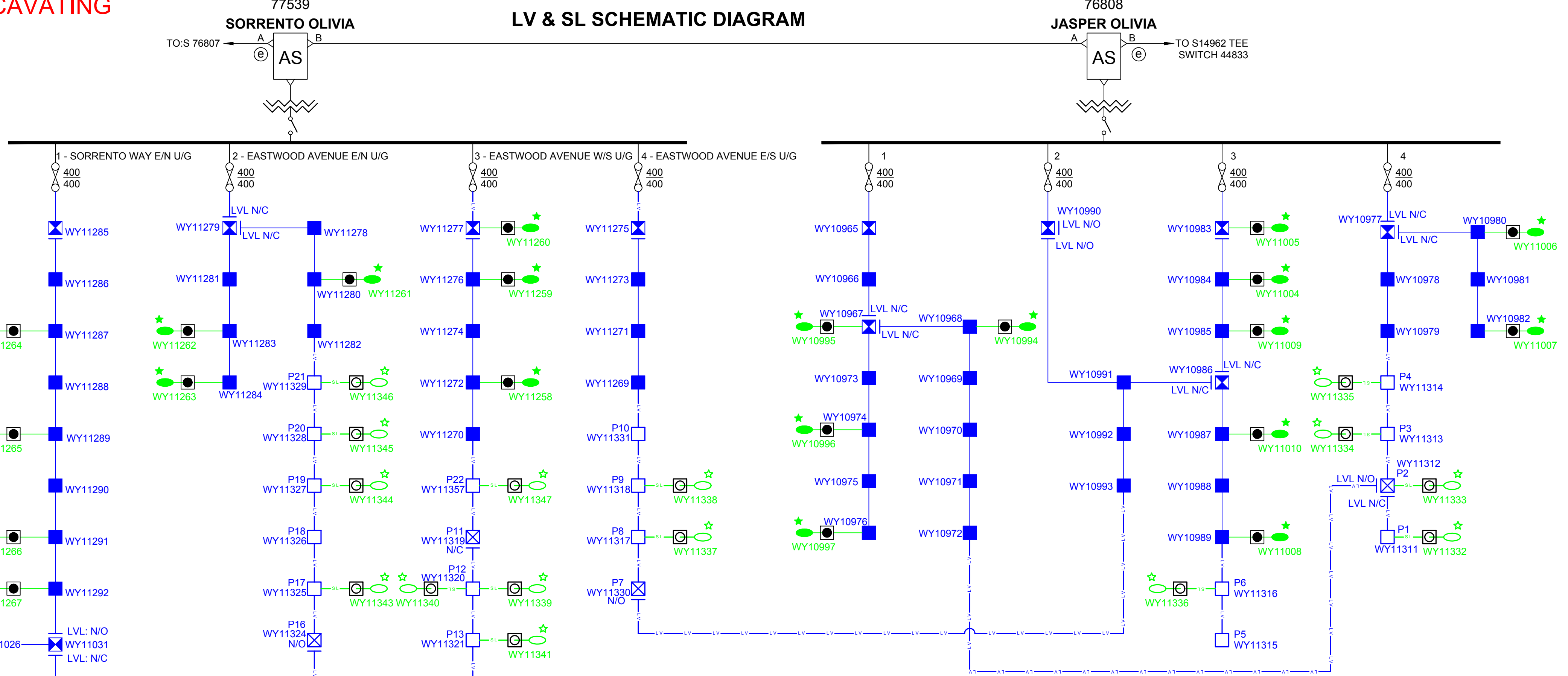


- WARNING**
- THIS DESIGN CANNOT BE USED FOR CONSTRUCTION PURPOSES UNTIL THE LOCATION OF ALL EXISTING SERVICES IS VERIFIED.
 - THE INFORMATION PROVIDED IN THIS DESIGN MUST BE CHECKED ON SITE AND THE MOST CURRENT INFORMATION ON THE CONFIGURATION OF ALL SERVICES, INCLUDING AUSGRID'S NETWORK, MUST BE VERIFIED IMMEDIATELY BEFORE CONSTRUCTION COMMENCES BY CONTACTING DIAL-BEFORE-YOU-DIG BY TELEPHONE ON 1100 OR AT www.1100.com.au.
 - DIAL-BEFORE-YOU-DIG INFORMATION MUST NOT BE OLDER THAN 20 BUSINESS DAYS AT THE TIME OF CONSTRUCTION.

UNDERGROUND CONSTRUCTION WORKS SCHEDULE (DUCT PULL VERSION 1.1)								
REF. IDENTIFIER	ROUTE DISTANCE (m)	CIRCUIT VOLTAGE	CONDUCTOR OR ASSET DETAIL	CABLE CODE	MIN. INTERNAL BENDING RADIUS (mm) DURING INSTALLATION	MIN. INTERNAL BENDING RADIUS (mm) AFTER INSTALLATION	CALCULATED MAX. PULLING TENSION (kN) DURING INSTALLATION	CONSTRUCTION DETAIL
77539 DIST 2								
O(WY11282) - N	15	LV	1 x LV 240AL4 XQZ/SAC CABLE	2257	600	390	0.37	INSTALL LV CABLE IN EXISTING CONDUIT
N - P21	16	LV	1 x LV 240AL4 XQZ/SAC CABLE	2257	600	390	-	INSTALL LV CABLE
P21 - P20	53	LV	1 x LV 240AL4 XQZ/SAC CABLE	2257	600	390	-	INSTALL LV CABLE
P20 - P19	26.5	LV	1 x LV 240AL4 XQZ/SAC CABLE	2257	600	390	-	INSTALL LV CABLE
P19 - P18	25	LV	1 x LV 240AL4 XQZ/SAC CABLE	2257	600	390	-	INSTALL LV CABLE
P18 - P17	27.5	LV	1 x LV 240AL4 XQZ/SAC CABLE	2257	600	390	-	INSTALL LV CABLE
P17 - P16	27.5	LV	1 x LV 240AL4 XQZ/SAC CABLE	2257	600	390	-	INSTALL LV CABLE
77539 DIST 3								
M(WY11270) - L	12.5	LV	1 x LV 240AL4 XQZ/SAC CABLE	2257	600	390	0.32	INSTALL LV CABLE IN EXISTING CONDUIT
L - P22	12.5	LV	1 x LV 240AL4 XQZ/SAC CABLE	2257	600	390	-	INSTALL LV CABLE
P22 - P11	51	LV	1 x LV 240AL4 XQZ/SAC CABLE	2257	600	390	-	INSTALL LV CABLE
P11 - P12	32	LV	1 x LV 240AL4 XQZ/SAC CABLE	2257	600	390	-	INSTALL LV CABLE
P12 - P13	62	LV	1 x LV 240AL4 XQZ/SAC CABLE	2257	600	390	-	INSTALL LV CABLE
P13 - P14	25	LV	1 x LV 240AL4 XQZ/SAC CABLE	2257	600	390	-	INSTALL LV CABLE
P14 - P15	25	LV	1 x LV 240AL4 XQZ/SAC CABLE	2257	600	390	-	INSTALL LV CABLE
P15 - P16	25	LV	1 x LV 240AL4 XQZ/SAC CABLE	2257	600	390	-	INSTALL LV CABLE
77539 DIST 4								
K(WY11269) - P10	12.5	LV	1 x LV 240AL4 XQZ/SAC CABLE	2257	600	390	-	INSTALL LV CABLE
P10 - P9	44	LV	1 x LV 240AL4 XQZ/SAC CABLE	2257	600	390	-	INSTALL LV CABLE
P9 - P8	30	LV	1 x LV 240AL4 XQZ/SAC CABLE	2257	600	390	-	INSTALL LV CABLE
P8 - J	50	LV	1 x LV 240AL4 XQZ/SAC CABLE	2257	600	390	-	INSTALL LV CABLE
J - I	8	LV	1 x LV 240AL4 XQZ/SAC CABLE	2257	600	390	0.24	INSTALL LV CABLE IN EXISTING CONDUIT
I - P7	7	LV	1 x LV 240AL4 XQZ/SAC CABLE	2257	600	390	-	INSTALL LV CABLE
P7 - H(WY10993)	15	LV	1 x LV 240AL4 XQZ/SAC CABLE	2257	600	390	-	INSTALL LV CABLE
76808 DIST 3								
F(WY10989) - G	15	LV	1 x LV 240AL4 XQZ/SAC CABLE	2257	600	390	0.37	INSTALL LV CABLE IN EXISTING CONDUIT
G - P6	45	LV	1 x LV 240AL4 XQZ/SAC CABLE	2257	600	390	-	INSTALL LV CABLE
P6 - P5	30	LV	1 x LV 240AL4 XQZ/SAC CABLE	2257	600	390	-	INSTALL LV CABLE
76808 DIST 4								
D(WY10979) - E	15	LV	1 x LV 240AL4 XQZ/SAC CABLE	2257	600	390	0.37	INSTALL LV CABLE IN EXISTING CONDUIT
E - P4	45	LV	1 x LV 240AL4 XQZ/SAC CABLE	2257	600	390	-	INSTALL LV CABLE
P4 - P3	30	LV	1 x LV 240AL4 XQZ/SAC CABLE	2257	600	390	-	INSTALL LV CABLE
P3 - B	12	LV	1 x LV 240AL4 XQZ/SAC CABLE	2257	600	390	-	INSTALL LV CABLE
B - C	26	LV	1 x LV 240AL4 XQZ/SAC CABLE	2257	600	390	0.57	INSTALL LV CABLE IN CONDUIT
C - P2	12	LV	2 x LV 240AL4 XQZ/SAC CABLE	2257	600	390	-	INSTALL LV CABLE
C - A(WY10972)	47	LV	1 x LV 240AL4 XQZ/SAC CABLE	2257	600	390	-	INSTALL LV CABLE
P2 - P1	30	LV	1 x LV 240AL4 XQZ/SAC CABLE	2257	600	390	-	INSTALL LV CABLE
P1, P3-P6, P8-P10, P12-P15, P17-P22	N/A	LV	18 x TWO-WAY PILLAR (LV1 - 33)	N/A	N/A	N/A	N/A	INSTALL TWO-WAY PILLAR (LV1-33)
P2	N/A	LV	1 x DOUBLE LINK PILLAR(LV1-60)	N/A	N/A	N/A	N/A	INSTALL DOUBLE LINK PILLAR (LV1-60)
P7, P11, P16	N/A	LV	3 x SINGLE LINK PILLAR (LV1 - 37)	N/A	N/A	N/A	N/A	INSTALL SINGLE LINK PILLAR (LV1 - 37)
SL CIRCUIT								
-	190	SL	16CU2 XQZ	2260	-	-	-	INSTALL SL CABLE FROM PILLAR TO SL STANDARD. (IN 50mm CONDUIT)
CONDUITS								
A-P1, B-E, P5-G, P7-I, P7-H, J-K, L-N	1000	N/A	1 x 150mm CONDUIT	-	-	-	-	INSTALL CONDUITS AS PER DESIGN AND CROSS SECTION DETAILS
B-C	26	N/A	2 x 150mm CONDUIT	-	-	-	-	INSTALL CONDUITS AS PER DESIGN AND CROSS SECTION DETAILS
	190		50mm CONDUIT					INSTALL 50mm CONDUITS FOR SL CABLE

NOT FOR CONSTRUCTION

CAD DRAWING NO.	AMENDMENTS			
ASSOCIATED DRAWINGS		CERTIFICATION NUMBER	## / ##	SIZE A1



STREET LIGHTING DESIGN DETAILS														
REF. IDENTIFIER	ASSET NUMBER	TARIFF	SL POLE TYPE	COLUMN SIZE (m)	MOUNTING METHOD	SYSTEM CONSTRUCTION	CONNECTED PHASE	COLUMN COLOUR	OUTREACH BRACKET TYPE	OUTREACH (m)	HEIGHT OF LUMINAIRE (m)	LUMINAIRE TYPE	LUMINAIRE SIZE (W)	ADDITIONAL DESIGN DETAIL
S1	WY11332	RATE 2	STYLE 2	6.5m	RAGBOLT	DOUBLE INSUL.	A PHASE	GALV	CURVED	2	6.5m	22W LED	22W	-
S2	WY11333	RATE 2	STYLE 2	6.5m	RAGBOLT	DOUBLE INSUL.	B PHASE	GALV	CURVED	2	6.5m	22W LED	22W	-
S3	WY11334	RATE 2	STYLE 2	6.5m	RAGBOLT	DOUBLE INSUL.	C PHASE	GALV	CURVED	2	6.5m	22W LED	22W	-
S4	WY11335	RATE 2	STYLE 2	6.5m	RAGBOLT	DOUBLE INSUL.	A PHASE	GALV	CURVED	2	6.5m	22W LED	22W	-
S5	WY11336	RATE 2	STYLE 2	6.5m	RAGBOLT	DOUBLE INSUL.	B PHASE	GALV	CURVED	2	6.5m	22W LED	22W	-
S6	WY11337	RATE 2	STYLE 2	6.5m	RAGBOLT	DOUBLE INSUL.	C PHASE	GALV	CURVED	2	6.5m	22W LED	22W	-
S7	WY11338	RATE 2	STYLE 2	6.5m	RAGBOLT	DOUBLE INSUL.	A PHASE	GALV	CURVED	2	6.5m	22W LED	22W	-
S8	WY11347	RATE 2	STYLE 2	6.5m	RAGBOLT	DOUBLE INSUL.	B PHASE	GALV	CURVED	2	6.5m	22W LED	22W	-
S9	WY11339	RATE 2	STYLE 2	6.5m	RAGBOLT	DOUBLE INSUL.	C PHASE	GALV	CURVED	2	6.5m	22W LED	22W	-
S10	WY11340	RATE 2	STYLE 2	6.5m	RAGBOLT	DOUBLE INSUL.	A PHASE	GALV	CURVED	2	6.5m	22W LED	22W	-
S11	WY11341	RATE 2	STYLE 2	6.5m	RAGBOLT	DOUBLE INSUL.	B PHASE	GALV	CURVED	2	6.5m	22W LED	22W	-
S12	WY11342	RATE 2	STYLE 2	6.5m	RAGBOLT	DOUBLE INSUL.	C PHASE	GALV	CURVED	2	6.5m	22W LED	22W	-
S13	WY11343	RATE 2	STYLE 2	6.5m	RAGBOLT	DOUBLE INSUL.	A PHASE	GALV	CURVED	2	6.5m	22W LED	22W	-
S14	WY11344	RATE 2	STYLE 2	6.5m	RAGBOLT	DOUBLE INSUL.	B PHASE	GALV	CURVED	2	6.5m	22W LED	22W	-
S15	WY11345	RATE 2	STYLE 2	6.5m	RAGBOLT	DOUBLE INSUL.	C PHASE	GALV	CURVED	2	6.5m	22W LED	22W	-
S16	WY11346	RATE 2	STYLE 2	6.5m	RAGBOLT	DOUBLE INSUL.	A PHASE	GALV	CURVED	2	6.5m	22W LED	22W	-

	DESIGNED BY B. LIU DRAWN BY B. LIU CHECKED BY R. BOURNE SUBMIT DATE 26/08/2016	LGA CENTRAL COAST COUNCIL MAP REF. CENTRAL COAST M:40-R:111 AUSGRID REF. WY-34 PRJ/TRAK No. XCNO10743	Stage 6 - 42 Lot Subdivision Louisiana Road Hamlyn Terrace
ASP REF. 0863	CERTIFICATION NUMBER	## / ##	SHEETS 2 of 2