



City of
Wagga Wagga

ECONOMIC SNAPSHOT



WELCOME TO THE ECONOMIC SNAPSHOT, A LOOK AT THE CURRENT ECONOMIC ENVIRONMENT IN THE CITY OF WAGGA WAGGA.

Wagga Wagga is the largest retail, commercial, administrative and population centre in the Riverina region and a central hub of services to a catchment of over 185,000 people. The city exhibits strong economic and population growth, coupled with consistently falling unemployment rates that are below the state and national averages. The city features a diverse economy without a reliance on a single sector, ensuring growth and prosperity is sustainable into the future.

The city is a key educational centre, providing quality education and training across the full spectrum of learning including Charles Sturt University's largest campus and the Riverina TAFE Campus.

Wagga Wagga is set for a positive and exciting future, with genuine confidence evidenced by significant developments either ready to commence or recently completed. A strategically beneficial location enables

excellent transport options and connectivity to Australia's major cities by road, rail or air.

As a result of the wide reaching population catchment, the city exhibits a strong retail sector, with significant investment and expansion in a number of these shopping centres.

Wagga Wagga is the heart of the Riverina, one of the most productive and economically diverse areas of Australia and often referred to as the nations food bowl. In a normal year total agricultural and horticultural production in the Riverina is worth more than \$1 billion and food processing accounts for 20 per cent of the gross regional product. This includes food research, production of vegetable, meat, fruit products, fibre processing and winemaking.

The city maintains a positive outlook and continued economic and population growth will ensure Wagga Wagga develops into a regional capital of Australia.

VALUE ADD

PUBLIC ADMINISTRATION & SAFETY

17.9%

EDUCATION & TRAINING

11.4%

HEALTH CARE & SOCIAL ASSISTANCE

10.4%

CONSTRUCTION

8.3%

MANUFACTURING

6.8%

RETAIL TRADE

6.8%

FINANCIAL & INSURANCE SERVICES

5.2%

TRANSPORT, POSTAL & WAREHOUSING

4.6%

PROFESSIONAL, SCIENTIFIC & TECHNICAL SERVICES

4.6%

WHOLESALE TRADE

4%

EMPLOYMENT

TRANSPORT, POSTAL & WAREHOUSING

4.8%

WHOLESALE TRADE

5%

MANUFACTURING

6.2%

AGRICULTURE, FORESTRY & FISHING

7.1%

CONSTRUCTION

7.3%

ACCOMMODATION & FOOD SERVICES

8.6%

EDUCATION & TRAINING

8.6%

RETAIL TRADE

9.7%

PUBLIC ADMINISTRATION & SAFETY

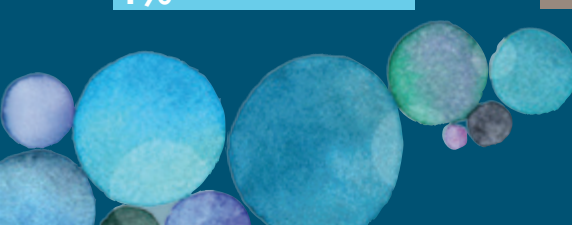
10%

HEALTH CARE & SOCIAL ASSISTANCE



16.4%

Value added by industry is an indicator of business productivity in Wagga Wagga. It shows how productive each industry sector is at increasing the value of its inputs.

Employment estimates the total number of persons employed in an industry sector (full-time and part-time) in Wagga Wagga regardless of where they live.



LEGEND

-  Central Business Area
-  Industrial Zones
-  Health Care Precinct

EDUCATION

- Charles Sturt University
- TAFE Riverina
- University of New South Wales
- University of Notre Dame
- Australian Airline Pilot Academy
- Royal Australian Air Force Base
- Kapooka Army Recruit Training Centre
- Riverina Community College

Source: WWCC


65,000
PEOPLE IN 2016

- Population growth greater than 1%
- 80,000 people in 2036
- Labor force of 30,000 people

Source: ABS, ID, WWCC


185,000
PEOPLE SHOP IN THE CITY

- Retail sector employs over 3000 people
- Nine unique shopping districts

Source: ABS, ID


5,500
BUSINESSES

Source: ID


1.4M
PEOPLE VISIT THE CITY EACH YEAR

- Visitors to Wagga Wagga spend over \$340M each year
- Overnight visitors to Wagga Wagga will spend approximately \$383 per visit and stay an average of 2.6 nights


300,000
PEOPLE ACCESS THE CITY'S HEALTH SERVICES

Dobney Avenue Light Industrial

Murrumbidgee River

Central Business Area

Visitor Information Centre

Health Precinct

MELBOURNE

◀ ADELAIDE



\$320K

MEDIAN HOUSE PRICE

- \$310 median weekly rent
- Industrial land in Wagga Wagga 1/5 cost of developing in Western Sydney

Source: Land and Property Information, WWCC

Bomen Business Park



\$3.6B

GROSS REGIONAL PRODUCT

- 3% growth
- Gross regional product is defined as the total value of goods and services produced in the region over a period of one year.

Source: ID



\$230M

VALUE OF DEVELOPMENT APPROVALS IN 2015/16

Source: WWCC



3.1%

UNEMPLOYMENT RATE

- Positive trend of low unemployment since 2013
- Below national average of 5.7%

Source: ID



DEVELOPMENT

- Wagga Wagga Rural Referral Hospital - \$282M
- Kapooka Bridge - \$55M
- High Productivity Freight Route - \$40M
- The Mill - \$35M
- Morgan Street Offices - \$17M
- The Marketplace - \$16M
- Rules Club Hotel - \$14M
- Wagga Wagga Courthouse - \$13M
- Docker Medical - \$15M
- Calvary Hospital - \$7M
- Ambulance Station - \$4M

Main Southern Railway

East Wagga Light Industrial

AIRPORT
CANBERRA
SYDNEY ▶

CONNECTIVITY

Excellent road, rail and air connections make Wagga Wagga a strategic centre for interstate transport, highly accessible and connected to Australia's major cities including Sydney, Melbourne, Canberra, Brisbane and Adelaide. Located at the junction point

of the Sturt and Olympic Highways, Wagga Wagga is the strategic mid-point on the Main Southern railway line linking the city to the major sea ports of Australia.



AIR

- Wagga to Sydney/Melbourne (1hr)
- Over 140 regular flights weekly to Sydney and Melbourne
- 210,000 passengers through the airport annually
- Proposed Wagga to Brisbane flight in 2017

Source: WWCC

ROAD

- Wagga to Sydney (5hrs), Melbourne (4.5hrs), Canberra (2.5hrs), Adelaide (10hrs) and Brisbane (14hrs)
- 75% of Australia's population within a 5 hour drive
- Major road transport companies are based in the city operating over 600 heavy vehicles

Source: WWCC

RAIL

- Freight rail connection from Wagga Wagga directly to either the Port of Sydney or Melbourne
- The proposed Inland Rail route will connect the ports of Melbourne and Brisbane via Wagga Wagga and the Riverina Intermodal Freight and Logistic Hub. The Inland Rail project will be delivered over a 10 year period and improve export capability and efficiency of business in the region along the most important and dense general freight routes in Australia

Source: WWCC

EXPORT

The export capacity of the region is set to increase with the proposed development of the Riverina Intermodal Freight and Logistics Hub. The RIFL Hub will deliver the following benefits:

- Reduce supply chain costs
- Build infrastructure that integrates with existing transport networks
- Improve infrastructure and safety
- Create jobs
- Build capacity for future growth
- Be an economic enabler for the Riverina region



City of
Wagga Wagga

CONTACT US

For more information or to discuss the opportunities in Wagga Wagga, please contact:

Wagga Wagga City Council

Phone: 02 6926 9100

Email: council@wagga.nsw.gov.au

www.wagga.nsw.gov.au

Front cover image: Docker Medical, Southern Cross Developers.

Information provided in this document has been compiled using sources including Council records, ABS, ID, Department of Employment, LPI, NSW Health, TRA and Destination NSW. If you have any questions regarding information contained in this document please contact Wagga Wagga City Council on 6926 9100.

ISSUE DATE: OCTOBER 2016

