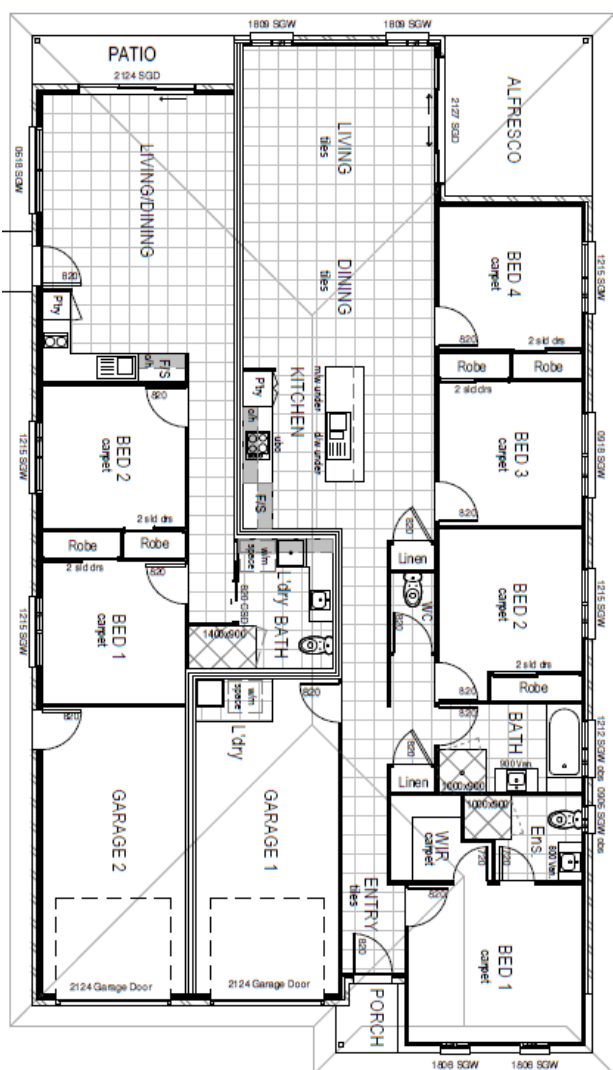


\$672,500

Lot 238 Magnolia Estate,
Hamlyn Terrace

MURPHY
Project EST.1975



BEDROOMS | GARAGE | BATHROOMS | LIVING
6 | 2 | 3 | 2

House Type: Cedar 245

Primary Dwelling:

Living Area	123.72m ²
Garage Area	23.01m ²
Patio Area	10.32m ²
Porch Area	1.76m ²

Secondary Dwelling:

Living Area	59.65m ²
Garage Area	20.25m ²
Porch/Patio	4.35m ²

Land Area:	480m ²
Land Conditions:	Land Price:
\$10,000 on Exchange	\$260,000
House Conditions:	House Price:
5% on Finance Approval	\$412,500

This work is exclusively owned by Murphy Builders QLD Pty Ltd t/a Murphy Homes and cannot be reproduced or copied. Price is inclusive of GST. Murphy Builders QLD Pty Ltd t/a Murphy Homes QBSA License No: 1129825. NSW 233869C. These are illustrations and artist impressions only, the buyer should refer to the contract drawings and standard inclusions for the correct detail. Price is fixed for 30 days from 09.05.2016